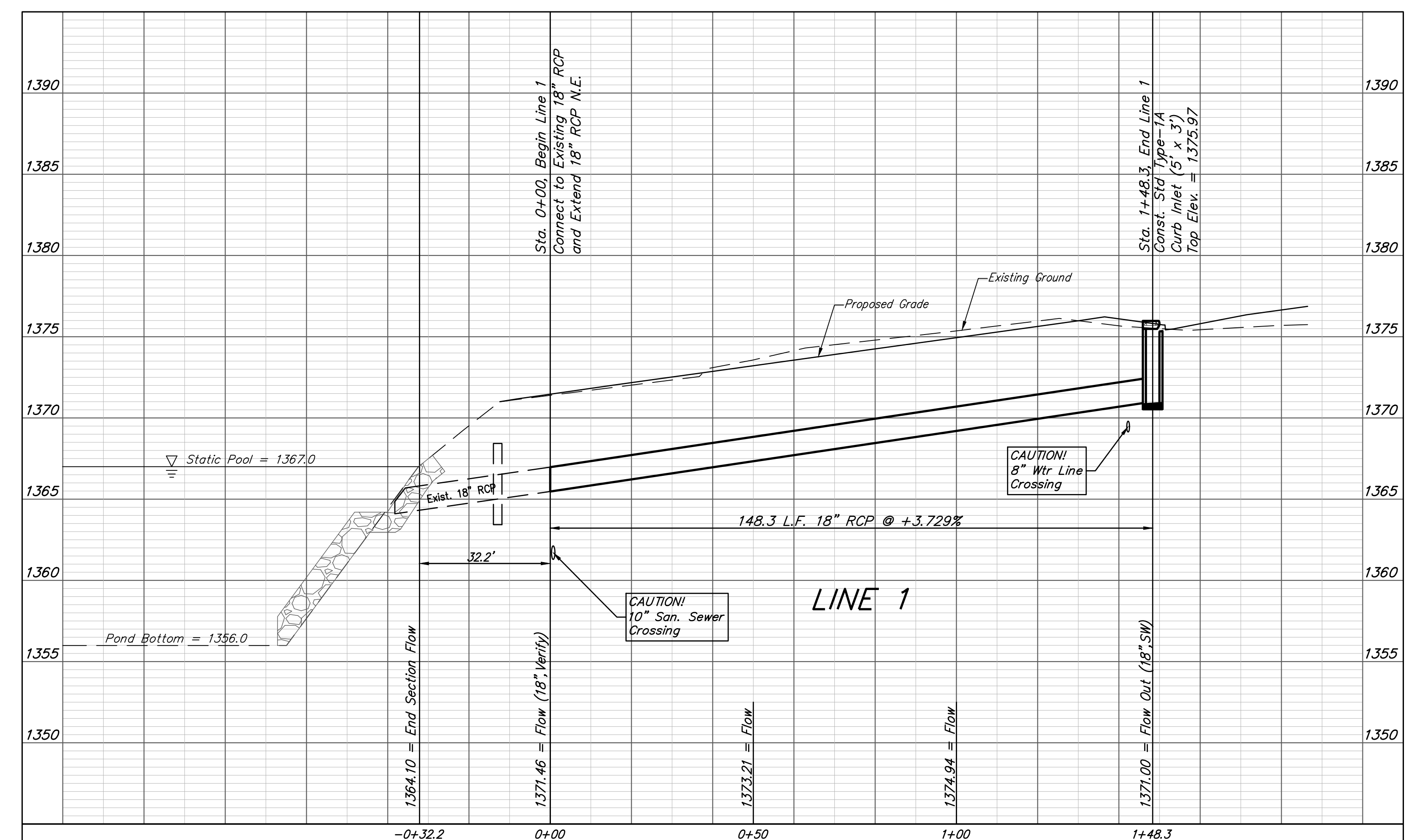
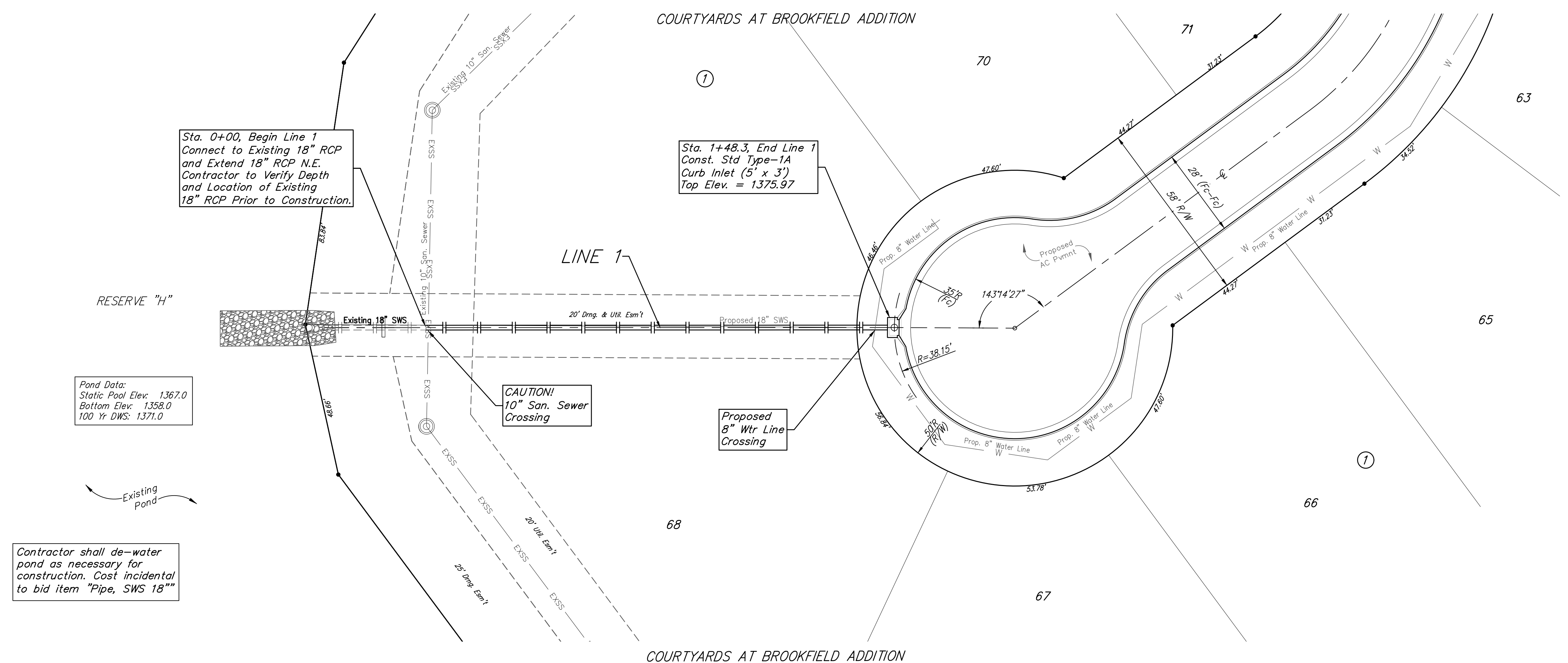


- BENCHMARKS:**
1. Cross cut in top of curb south side of Bristol Ct. Approx. 14.5' north of the NE cor. of Lot 51, Block E, Brookfield Addn. Elev. = 1380.34 NAVD88
  2. City of Wichita Benchmark Disk in top of curb. East end of north curb return, Bristol and Bristol Ct. adjacent to fire hydrant. Approx. 17.9' SE of the SE cor. of Lot 20, Block D, Brookfield Addn. Elev. = 1378.62 NAVD88



**BAUGHMAN COMPANY**  
 315 Ellis St.  
 Wichita, KS 67211  
 316-262-7271  
 BaughmanCo.com

**COURTYARDS AT BROOKFIELD ADDITION PHASE II**

**LINE 1**

Storm Water Sewer Improvements

PROJECT NUMBER:  
472-2023-085896

DESIGN: AEG DRAWN: JAK

DATE: Mar. 15, 2023

SHEET **8** OF **22**

**Professional Engineer Seal:**  
 AUSTIN E. GOTTLIEB  
 LICENSE NO. 17919  
 05/16/2023  
 KANSAS  
 PROFESSIONAL ENGINEER

File: E:\Projects\Brookfield Addition - 16-04-P190\Engineering\Courtyards Ph 2 Wtr & Ph 3 SWS\STR\_21-12-E077.dwg