

GENERAL NOTES:

1. The Contractor shall comply with all applicable safety regulations. All construction shall be completed following current City Standard Specifications and Special Provisions.

2. Contractor will be required to provide notice to utility companies a minimum of seventy-two (72) hours prior to any excavation, as follows:

Kansas One-Call 687-2470

The Contractor must notify the following in case of an emergency:

AT&T	1-800-246-8464
Black Hills Energy	1-800-694-8989
City of Wichita Water & Sewer	1-316-219-8921
City of Wichita Stormwater	1-316-268-4090
City of Wichita Traffic	1-316-268-4034
Cox Communications	1-888-249-3530
Kansas Gas Service	1-888-482-4950
Energy	1-800-544-4857

3. Utility service lines, poles, etc. are to be adjusted as necessary by others prior to construction unless the plans specifically call for their adjustment by the Contractor or unless the plans specifically identify a utility to be adjusted by its owner during construction. Existing utilities and their location, as shown on the plans, represent the best information obtainable for design. The Contractor will be required to work around existing utilities within the right-of-way which do not conflict with proposed construction.

4. Rubble from the removal of miscellaneous structures and excess excavation which is to be wasted shall be disposed of on sites to be provided by the Contractor. These sites shall be approved by the Engineer as to suitability, appearance and site location. Locations, in the opinion of the Engineer, that will leave an unsightly appearance will not be approved. All disposal sites must be approved by the Kansas Department of Health and Environment. Material either stockpiled or disposed of in a flood plain will require a Kansas State Board of Agriculture permit. Any material dumped in waters of the United States or wetlands is subject to U.S. Corps of Engineers permitting regulations. Any material buried or stockpiled beyond approved construction limits will require additional archaeological investigations unless buried in a previously approved borrow location.

5. Trees and shrubs in public right-of-way which are in direct conflict with proposed new construction shall be removed by the Contractor with the City Engineer's approval. Trees and shrubs which are not in direct conflict with proposed new construction shall be saved and protected from damage.

6. The Contractor shall give all property owners and/or tenants of developed property abutting the construction of this project a minimum of ten (10) days notice prior to start of construction.

7. The Contractor shall be responsible for preserving property irons. The Contractor will be required to re-establish any property irons which are damaged or destroyed by his construction operations. Such irons shall be re-established by a licensed land surveyor in accordance with state laws.

8. All elevations shown are NAVD88.

9. All stubs and capped pipes shall be located with green plastic tape in the same manner as risers.

10. Connecting to Existing Manholes: Prior to laying sewer lines using existing stubs in existing manholes, the Contractor shall expose and verify the elevation, grade and alignment of existing stubs and notify the Engineer of any deviation from the plans. Where the stub is unusable due to elevation grade or alignment, the Contractor shall remove the stub and plug the hole, and reshape the existing manhole invert to provide smooth flow. Where connection to an existing manhole that does not have an existing stub, the Contractor shall core cut into existing manhole wall to make connection using approved water stop gasket, and reshape the existing manhole invert to provide smooth flow. The cost of connect to existing manholes is incidental to the project.

11. Contractor shall limit the extent of trench open overnight and weekends to less than 50 feet.

12. Contractor shall provide positive drainage away from all manhole covers.

13. The Contractor shall prevent any construction debris from entering the existing sanitary sewer during construction.

14. The Contractor shall protect from damage and support existing utilities through construction as approved by the utility owner and the Engineer at the contractor's expense.

15. All areas disturbed during construction are to be seeded as follows:

Seed -- Rye grass; 5 lbs./1000 Sq. Ft.

All costs associated with seeding including mobilization, preparation of ground, seeding, fertilizing, mulching, etc. shall be included in the L.S. bid item "Seeding".

16. All existing and proposed erosion control measures including silt fencing, erosion control mat, straw bales, inlet barriers, and const. entrance shall be maintained throughout construction by the contractor and until project is accepted by the City of Wichita. The on-site engineer shall complete weekly reports on the status of erosion control measures. The contractor shall be required to comply with maintenance and/or replacement of erosion control measures as determined by the on-site engineer until project is accepted by City of Wichita. Maintenance and/or replacement of erosion control measures to be paid by L.S. bid item "Maintain Existing BMPs".

17. All excess excavation shall remain on-site and shall be stockpiled or spread at a location determined by the engineer.

18. Existing trees shall be trimmed/removed ONLY with approval of the Developer. Trimming of overhanging limbs will be permitted only with chainsaws. Trees not in direct conflict with new construction shall remain and be protected from damage. Prior to the start of construction, the Contractor shall schedule an on-site meeting will occur with the Developer to discuss treed areas. All trimming and/or removal shall be included in bid item "Site Clearing".

19. The developer for this project is Jay W. Russell, P.O. Box 75337, Wichita, KS 67272 (316)722-2417 j@russellco.com

Benchmarks

BM #1: "+" in entrance on the north side of 53rd St. N., ~890' west of Meridian.
Elev. = 1333.90 (NAVD88)

BM #2: "+" on the south side of manhole rim, 20' east and 5' south of the NW corner of Lot 3, Block B, Northgate 5th Addition.
Elev. = 1335.53 (NAVD 88)

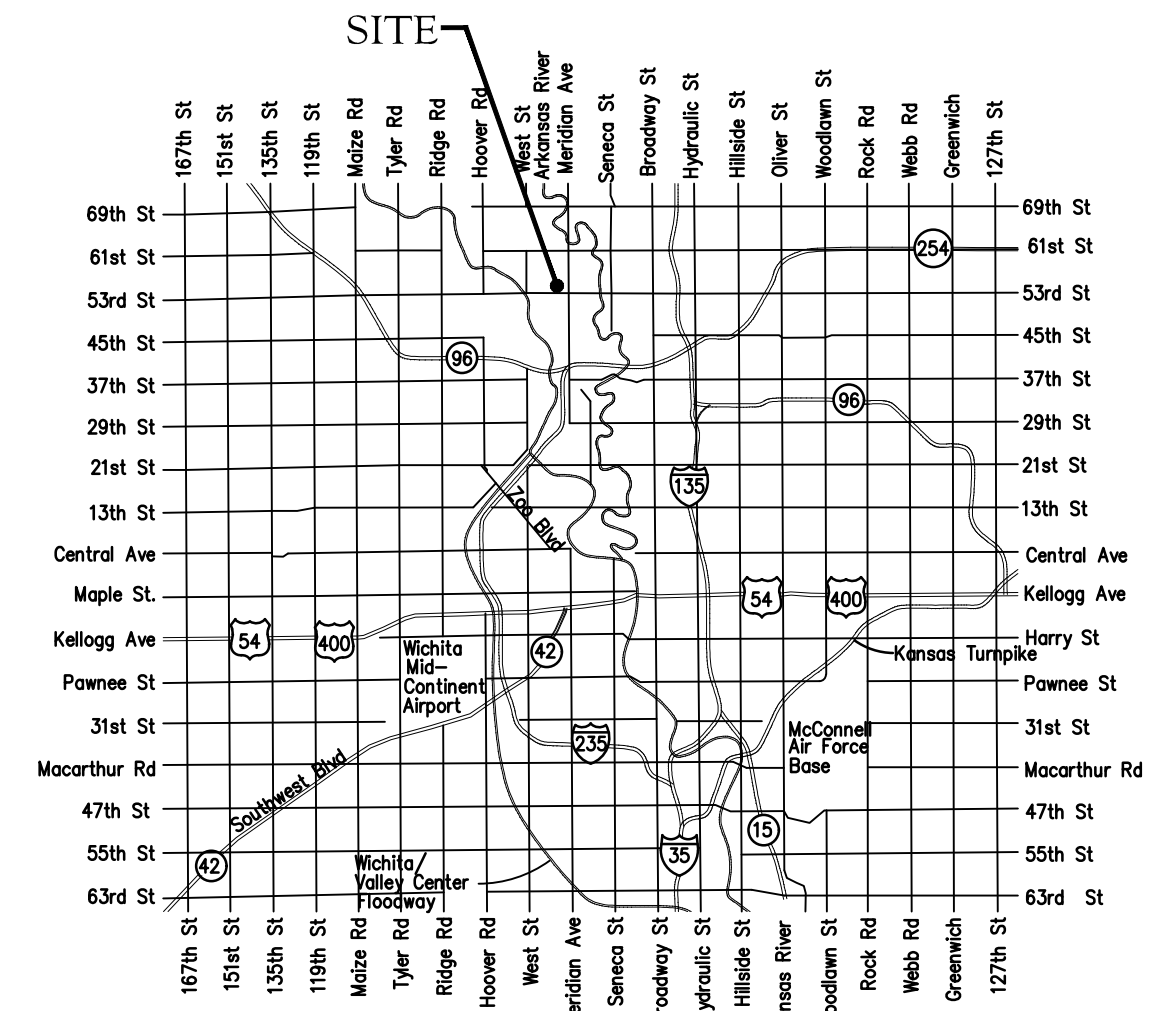
SANITARY SEWER IMPROVEMENTS to serve NORTHGATE 5TH ADD. - PH. 6

CITY OF WICHITA, KANSAS

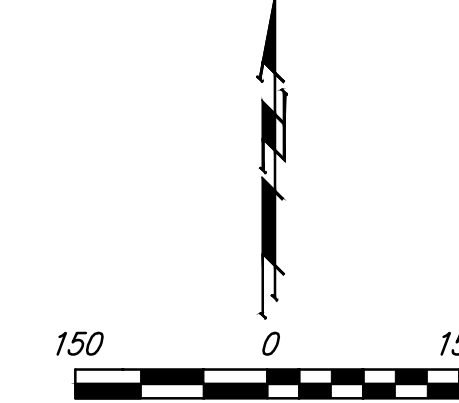
Gary Janzen, P.E. City Engineer
Project Number 468-2021-003145
Org Code 47267522
Munis Number E2100

Mies Construction - Contractor
S. Lowe - City of Wichita, Field Project Engineer
R. Canillo - City of Wichita, Inspector
As-built
Stubs & Risers
Release Date (for connection purposes only): 6/2/2023
Completion Date:
pdf: apr 6/2/2023

SS As-Built - Sheet 2
Inspector: Roberto Carrillo
Contractor: Mies Construction
Superintendent: Albert Williams
Company: City of Wichita



Vicinity Map



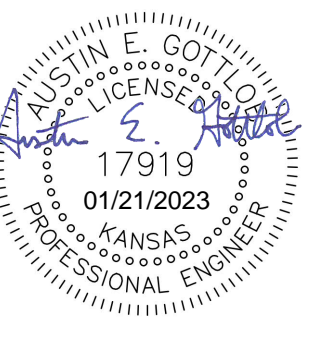
Sheet Index

Title Sheet	1
Line 1	2-3
Line 2	4-5
Line 3	6
Lines 4 & 5	7
Erosion Control Plan	8
Precast SS Manhole Detail	9
Manhole Frame & Cover Detail	10
Vertical Riser Detail	11
Erosion Control BMP Details	12-16
Coordinate Sheet	17
Copy of Plat	18

APPROVED AS NOTED
BY WICHITA PUBLIC WORKS ENGINEERING DIVISION

Engineering _____

An approved copy of these plans signed by City staff are required on-site.



January 18, 2023

Benefit District

BAUGHMAN COMPANY
315 Ellis St. Wichita, KS 67211 316-262-7271
BaughmanCo.com



Construction Engineering Division
 1801 S. McLean Blvd., Suite B
 Wichita KS, 67213
 (316) 268-4027

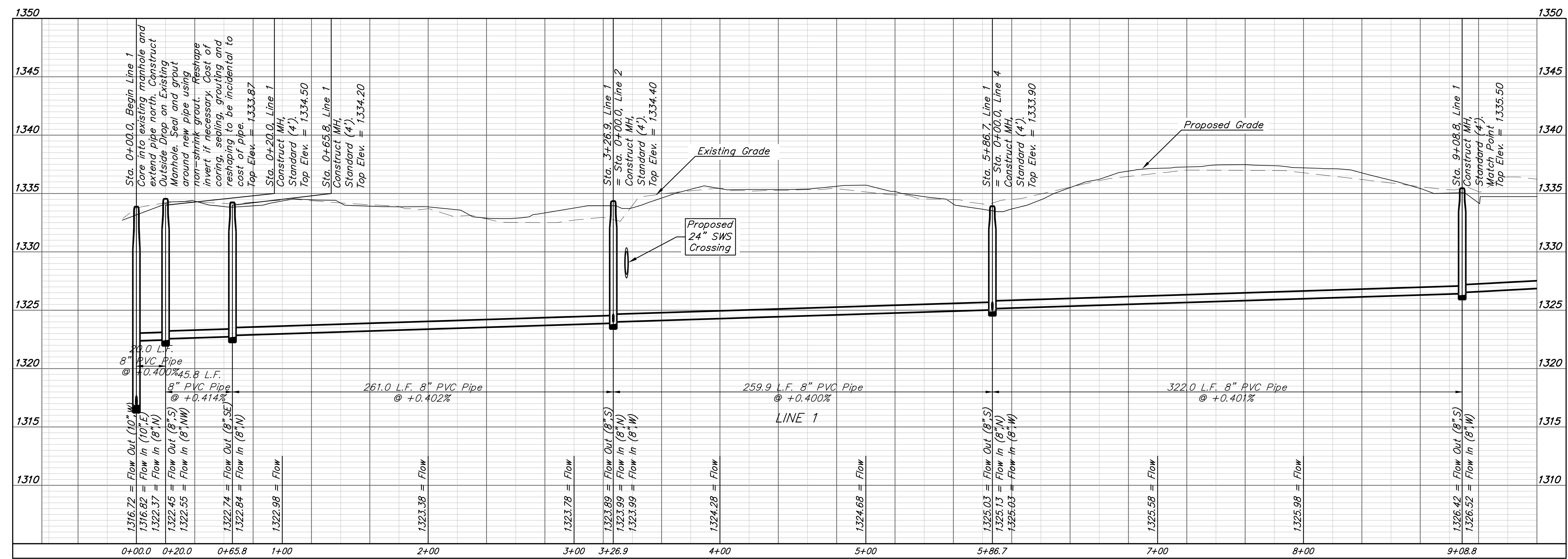
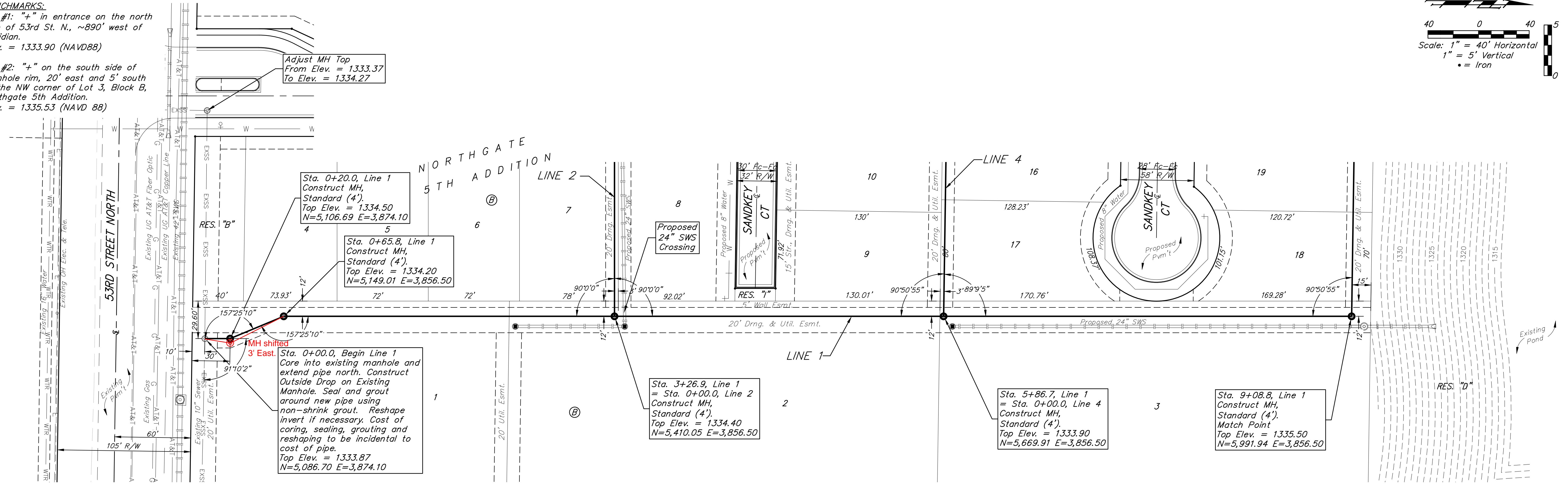
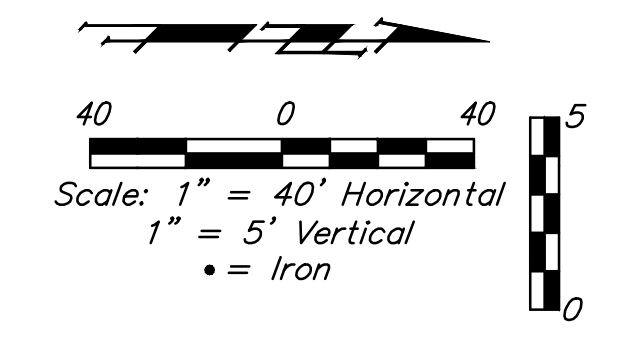
Sanitary Sewer Riser Table

Project Name: Northgate 5th, Ph 6 SS, WTR, SWS, & Paving
Project Location: (north of 53rd Street N & west of Meridian Ave)
Project No: 448-2021-003263_458-2021-085463_468-2021-003145_472-2021-085695
MUNIS No: E2102_E2101_E2099
Contractor: Mies Construction
Inspector: R. Carrillo

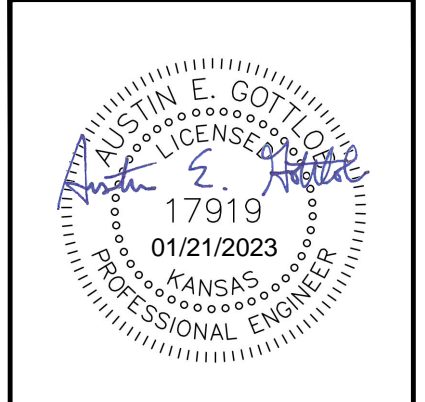
Riser No.	Line No.	Station	Distance from Main to Riser (Lt./Rt.)	Vertical Offset	Distance from		Comment
					Upstream MH	Downstream MH	
1	1	12+12.9	5' LT				At MH
2	2	12+69.9	5.5' RT				At MH
3	3	1+05.8	5.2' LT				At MH
4	4	1+67	13' LT				At MH
5	4	1+99	13' LT		215.6	32	
6	4	2+42	13' LT		172.6	75	
7	4	2+92	13' LT		122.6	125	
8	5	1+25	7.6' LT				At MH

BENCHMARKS:
 BM #1: "+" in entrance on the north side of 53rd St. N., ~890' west of Meridian.
 Elev. = 1333.90 (NAVD88)

BM #2: "+" on the south side of manhole rim, 20' east and 5' south of the NW corner of Lot 3, Block B, Northgate 5th Addition.
 Elev. = 1335.53 (NAVD 88)



Contractor shall verify elevation and alignment of existing 10" pipe prior to construction and notify Engineer of any discrepancy.



BAUGHMAN COMPANY
 315 Ellis St.
 Wichita, KS 67211
 316-262-7271
 BaughmanCo.com

NORTHGATE 5TH ADD.
 Phase 6

LINE 1

SANITARY SEWER IMPROVEMENTS

PROJECT NUMBER:
 22-08-E286

DESIGN: AEG DRAWN: TMS

DATE: January 18, 2023

SHEET **2** OF **18**

File: E:\Projects\Northgate 5th Addition_20-03-P538\Engineering\Phase 6\SS 22-08-E286\Sewer.dwg

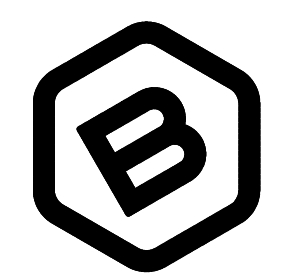
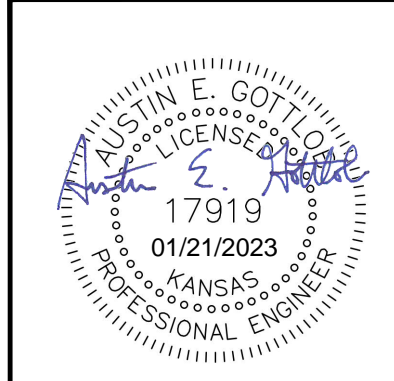
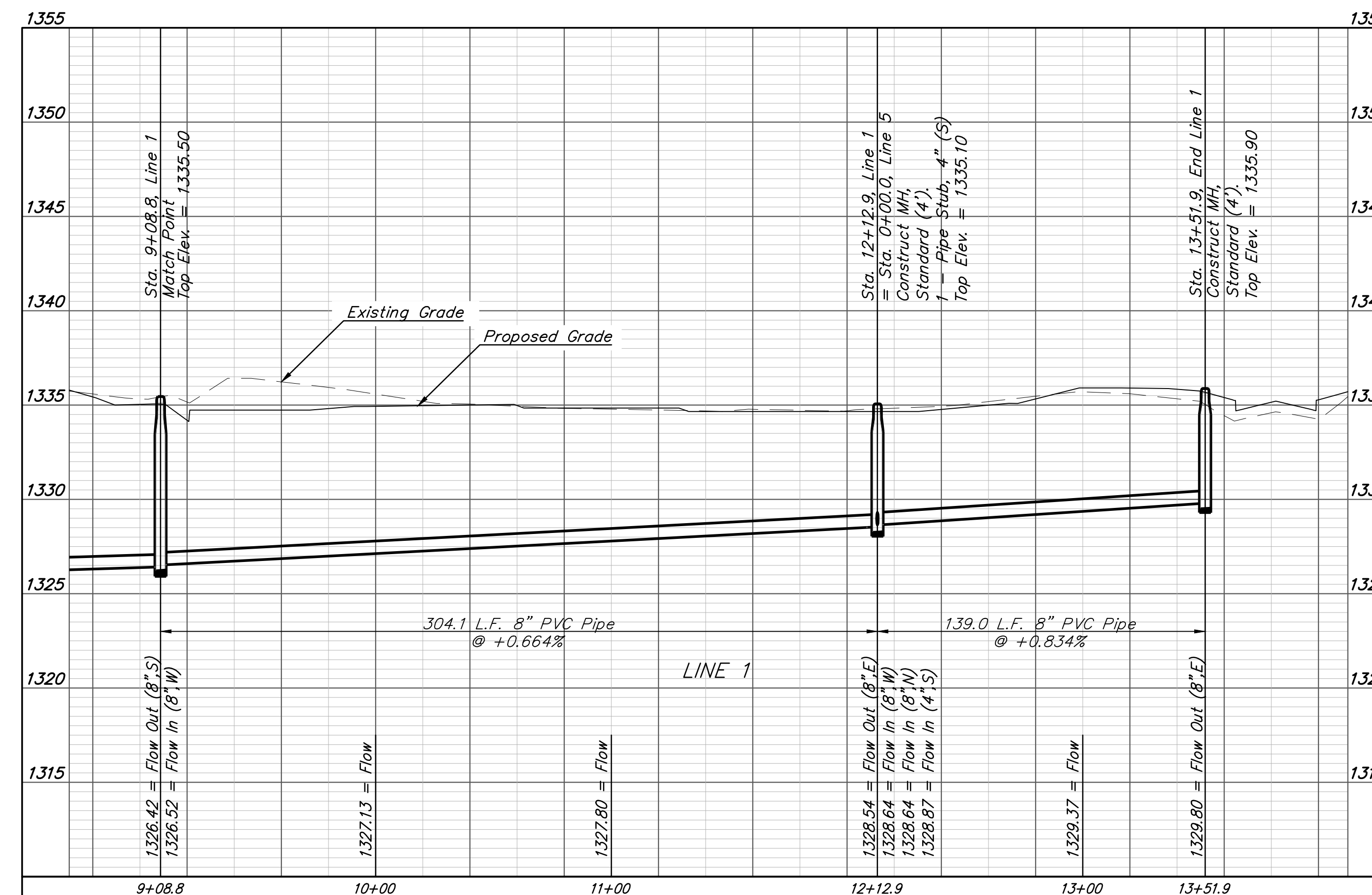
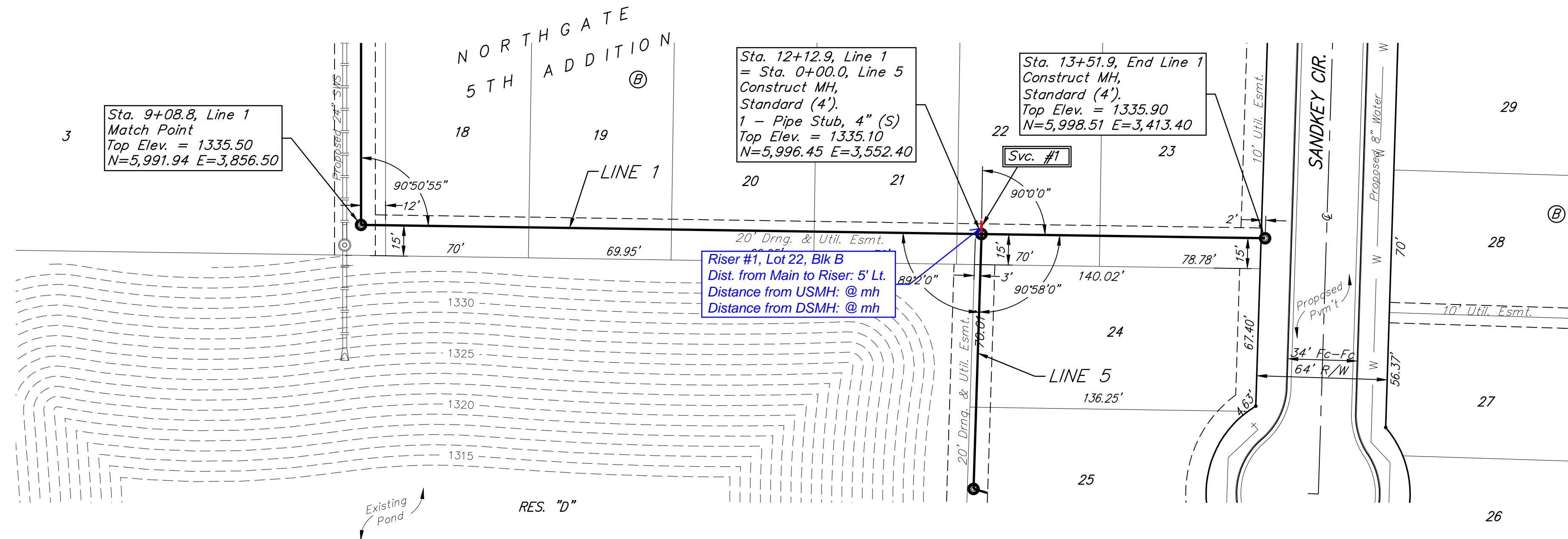
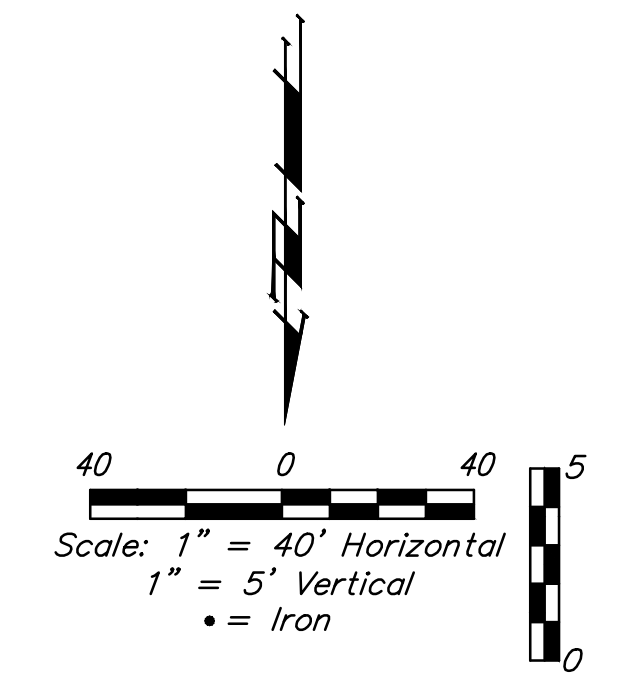
BENCHMARKS:
 BM #1: "+" in entrance on the north side of 53rd St. N., ~890' west of Meridian.
 Elev. = 1333.90 (NAVD88)

BM #2: "+" on the south side of manhole rim, 20' east and 5' south of the NW corner of Lot 3, Block B, Northgate 5th Addition.
 Elev. = 1335.53 (NAVD 88)

SEWER SERVICE TABLE

NUMBER	TYPE	LOCATION			FOR INFORMATION ONLY	
		LOT NO.	BLOCK NO.	LINE NO.	STATION DIRECTION	APPROXIMATE LENGTH 4" PIPE
1	4" Stub	22	B	1	12+12.9/Lt.	VERTICAL HORIZONTAL - 5.0'

NOTE: Vertical Riser Pipe shall be extended to 2' minimum above ground water elevation and 4' maximum below proposed ground elevation.



BAUGHMAN COMPANY
 315 Ellis St.
 Wichita, KS 67211
 316-262-7271
 BaughmanCo.com

NORTHGATE 5TH ADD.
 Phase 6

LINE 1

SANITARY SEWER IMPROVEMENTS

PROJECT NUMBER:
 22-08-E286

DESIGN: AEG DRAWN: TMS

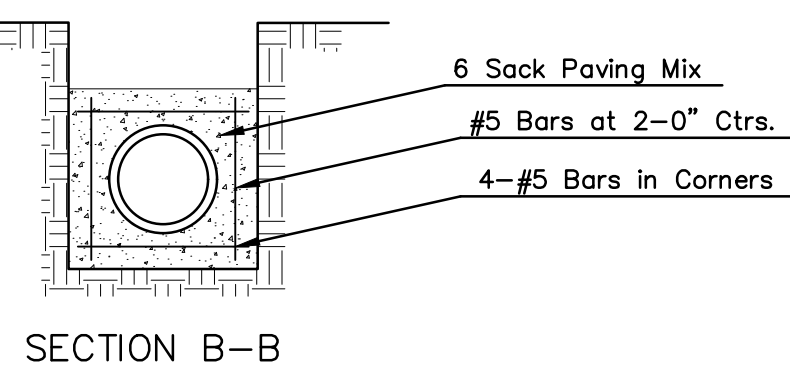
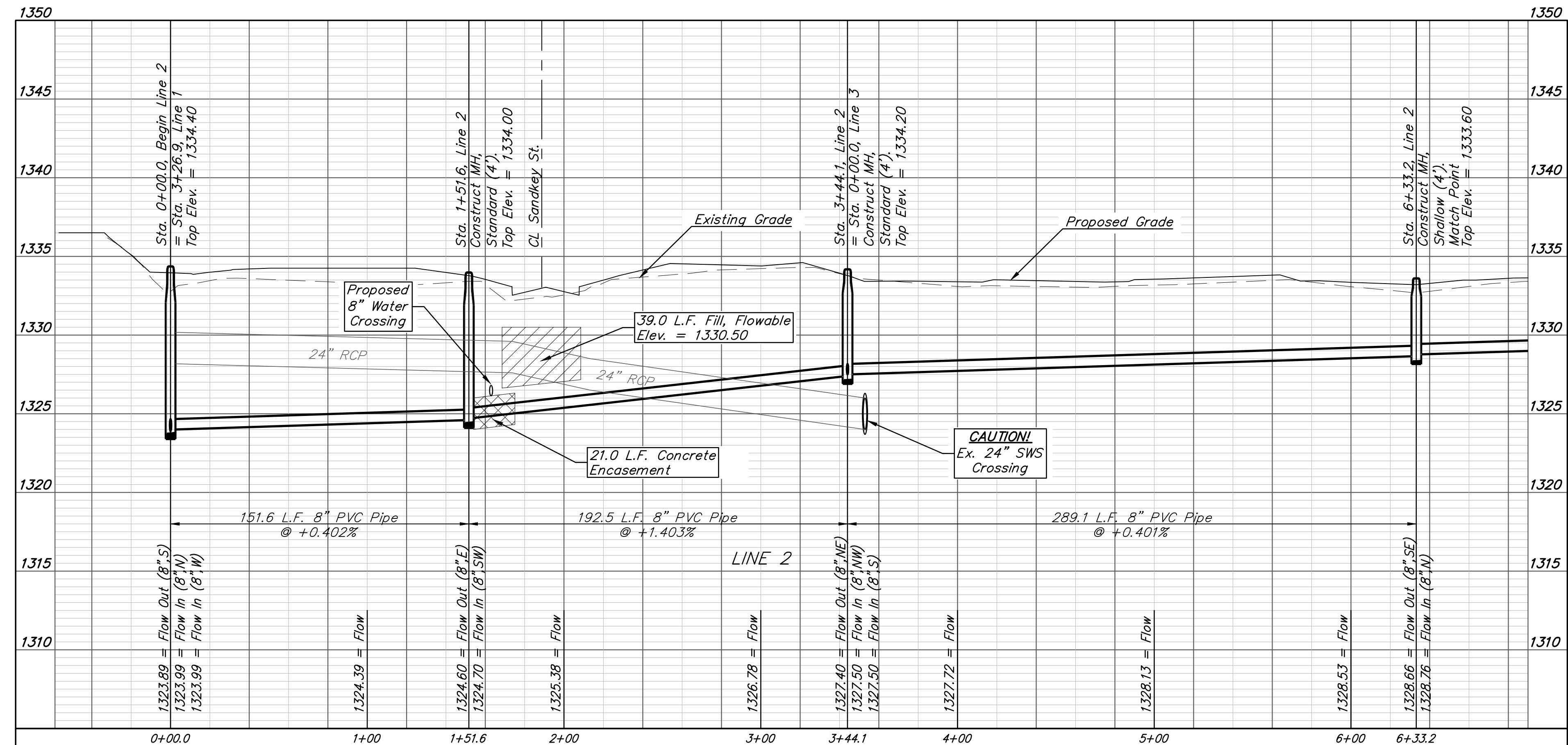
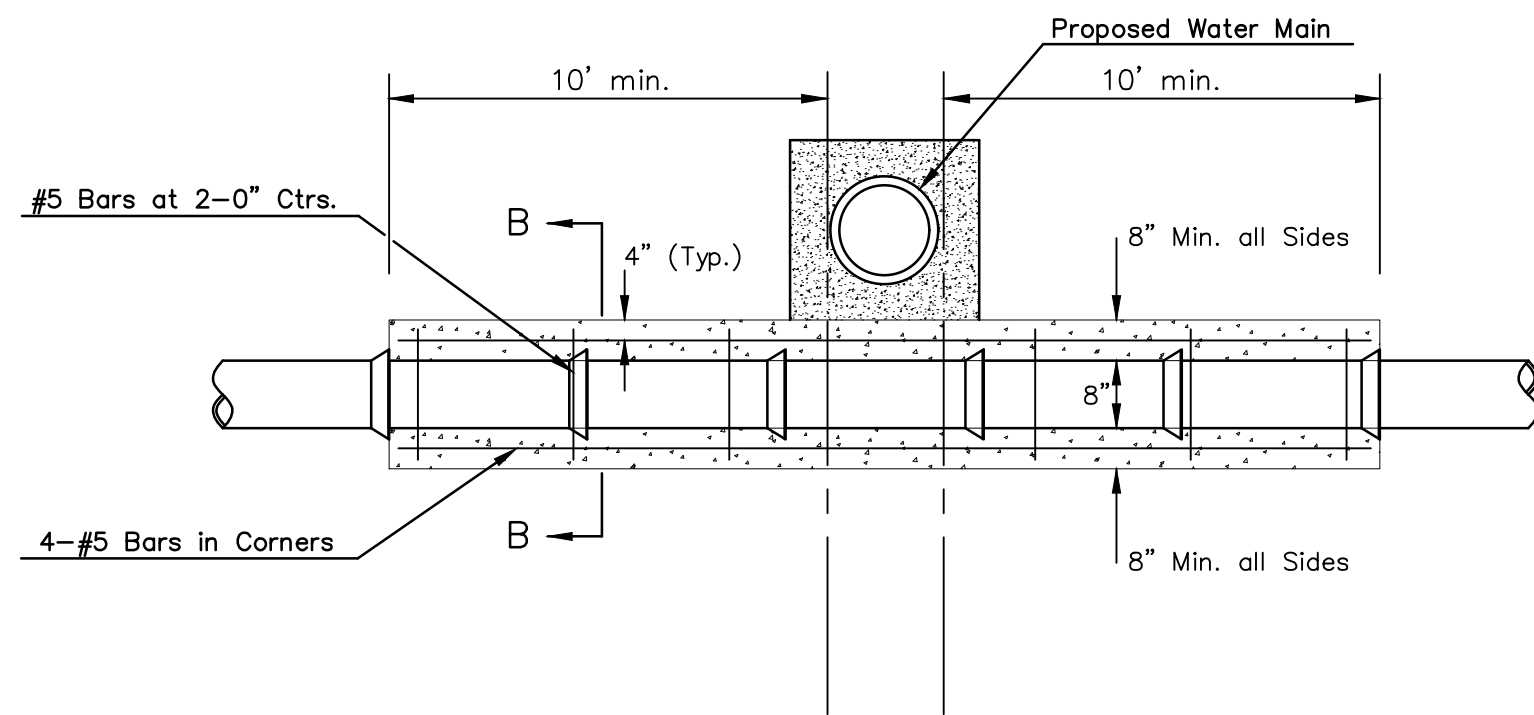
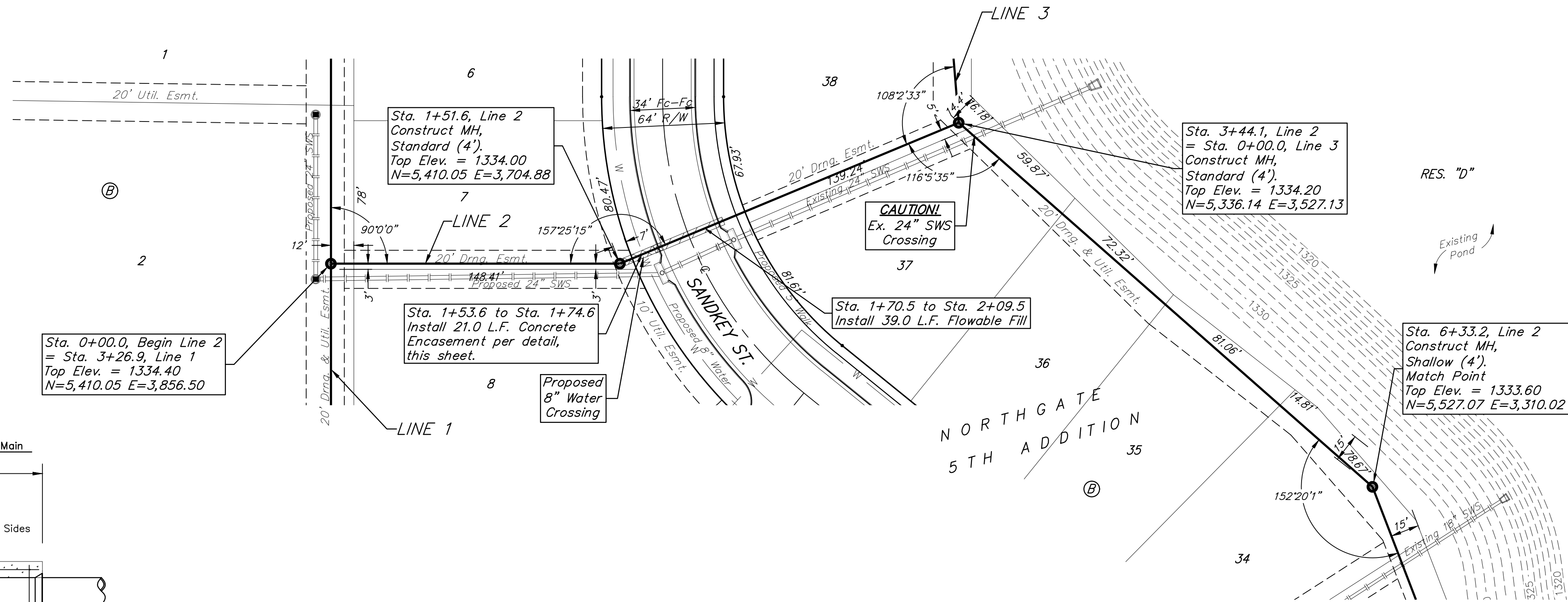
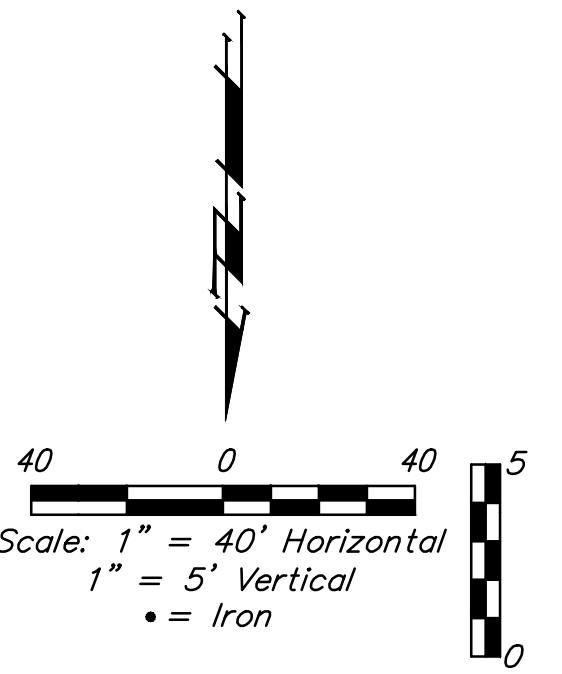
DATE: January 20, 2023

SHEET **3** OF **18**

File: E:\Projects\Northgate 5th Addition_20-03-P538\Engineering\Phase 6\SS 22-08-E286\Sewer.dwg

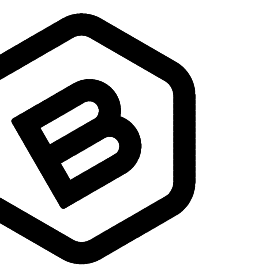
BENCHMARKS:
 BM #1: "+" in entrance on the north side of 53rd St. N., ~890' west of Meridian.
 Elev. = 1333.90 (NAVD88)

BM #2: "+" on the south side of manhole rim, 20' east and 5' south of the NW corner of Lot 3, Block B, Northgate 5th Addition.
 Elev. = 1335.53 (NAVD 88)



Note: Encasement to begin and end at a Bell on Sanitary Sewer Pipe.

REINFORCED CONCRETE ENCASEMENT OF SANITARY SEWER



BAUGHMAN COMPANY
 315 Ellis St.
 Wichita, KS 67211
 316-262-7271
 BaughmanCo.com

NORTHGATE 5TH ADD.
 Phase 6

LINE 2

SANITARY SEWER IMPROVEMENTS

PROJECT NUMBER:
 22-08-E286

DESIGN: AEG DRAWN: TMS

DATE: January 17, 2023

SHEET 4 OF 18

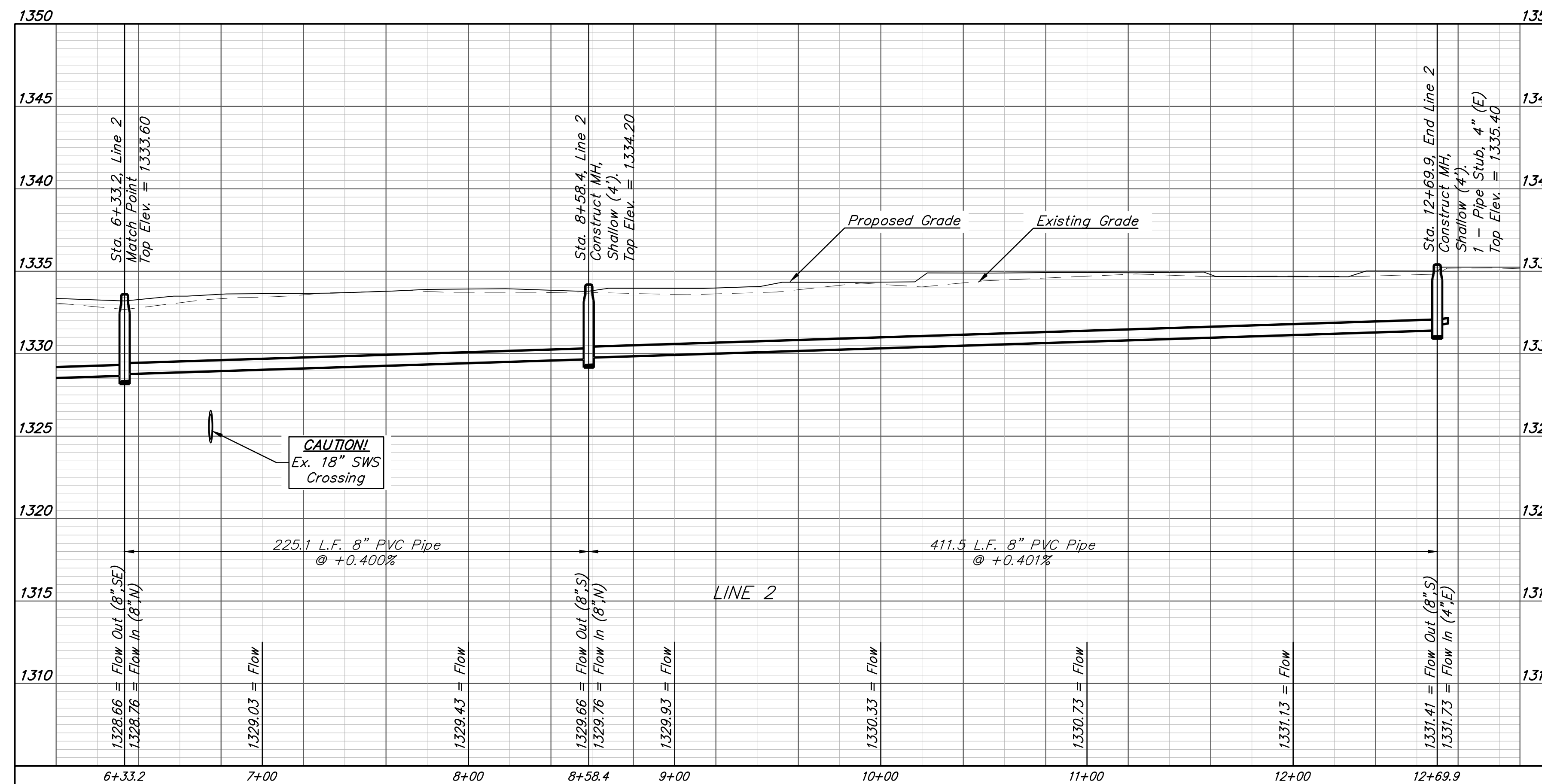
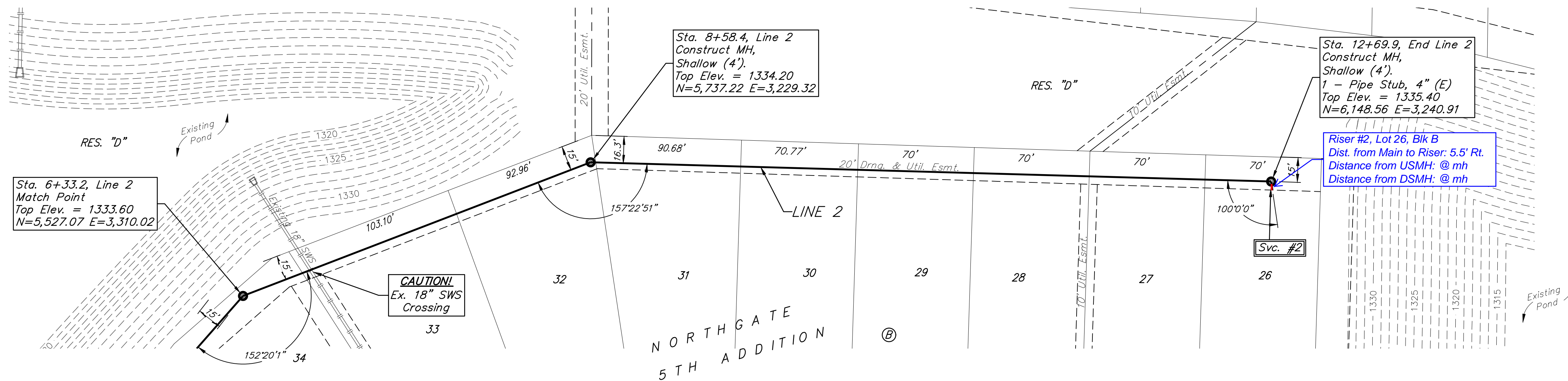
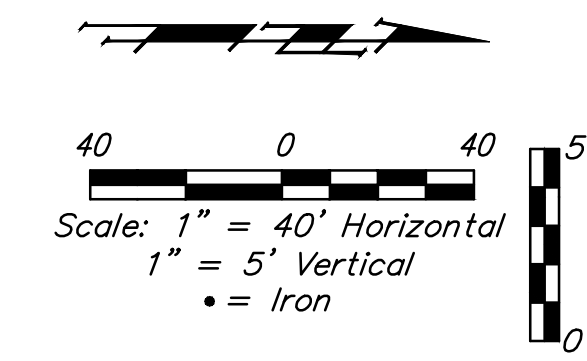
BENCHMARKS:
 BM #1: "+" in entrance on the north side of 53rd St. N., ~890' west of Meridian.
 Elev. = 1333.90 (NAVD88)

BM #2: "+" on the south side of manhole rim, 20' east and 5' south of the NW corner of Lot 3, Block B, Northgate 5th Addition.
 Elev. = 1335.53 (NAVD 88)

SEWER SERVICE TABLE

NUMBER	TYPE	LOCATION				FOR INFORMATION ONLY	
		LOT NO.	BLOCK NO.	LINE NO.	STATION \ DIRECTION	APPROXIMATE LENGTH 4" PIPE	VERTICAL
2	4" Stub	26	B	2	12+69.9/Rt.	-	-5.6' 5.5'

NOTE: Vertical Riser Pipe shall be extended to 2' minimum above ground water elevation and 4' maximum below proposed ground elevation.



BAUGHMAN COMPANY
 315 Ellis St.
 Wichita, KS 67211
 316-262-7271
 BaughmanCo.com

NORTHGATE 5TH ADD.
 Phase 6

LINE 2

SANITARY SEWER IMPROVEMENTS

PROJECT NUMBER:
 22-08-E286

DESIGN: AEG DRAWN: TMS
 DATE: January 17, 2023

SHEET **5** OF **18**

File: E:\Projects\Northgate 5th Addition_20-03-P538\Engineering\Phase 6\SS 22-08-E286\Sewer.dwg

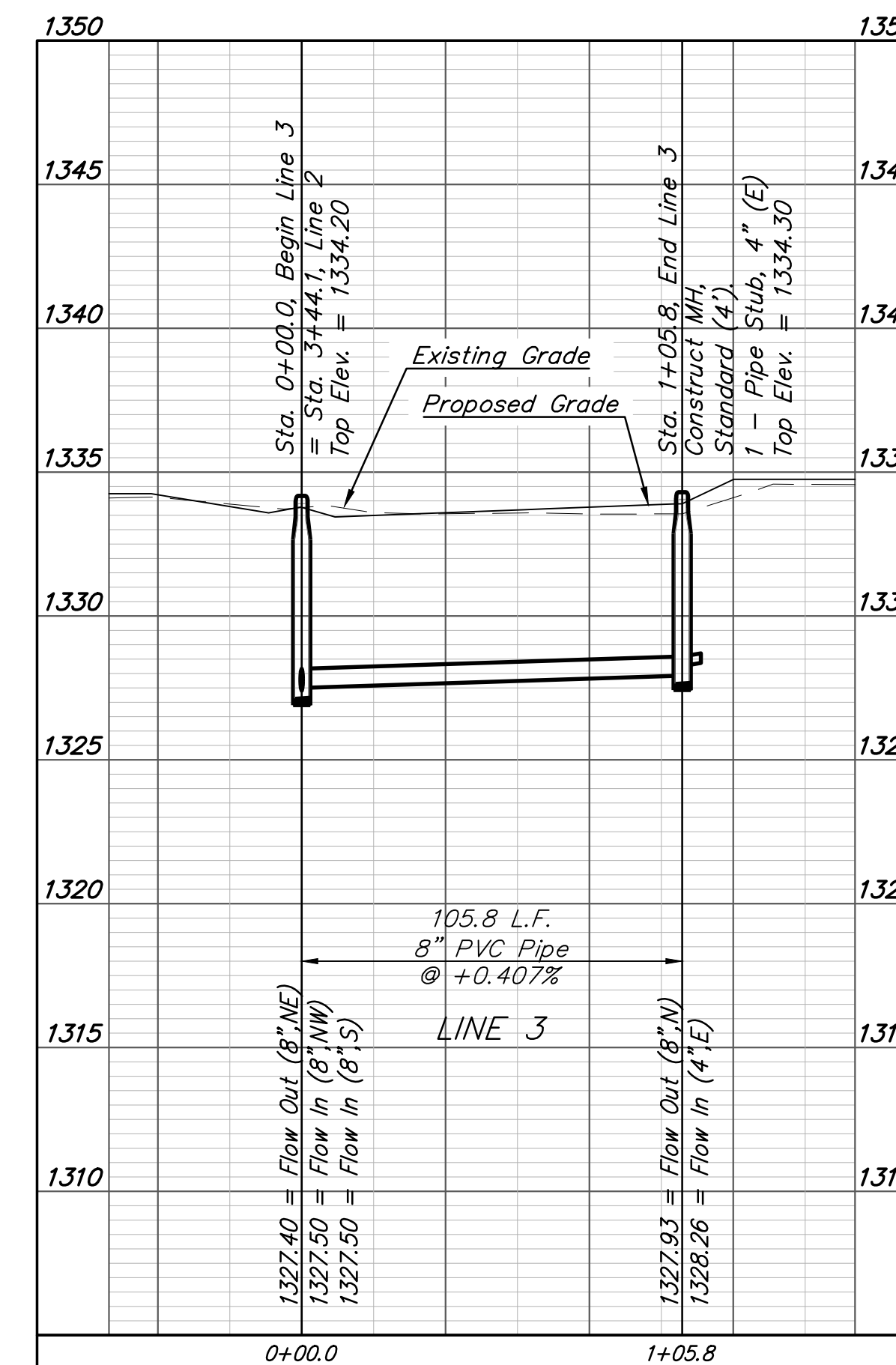
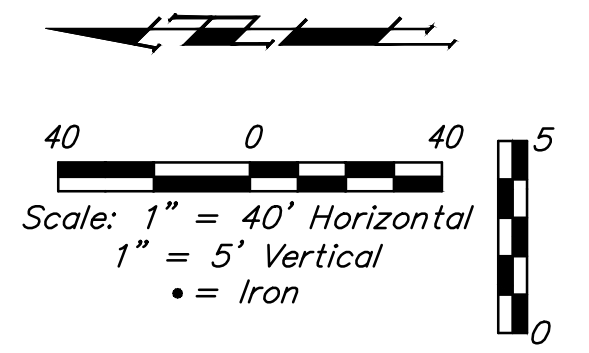
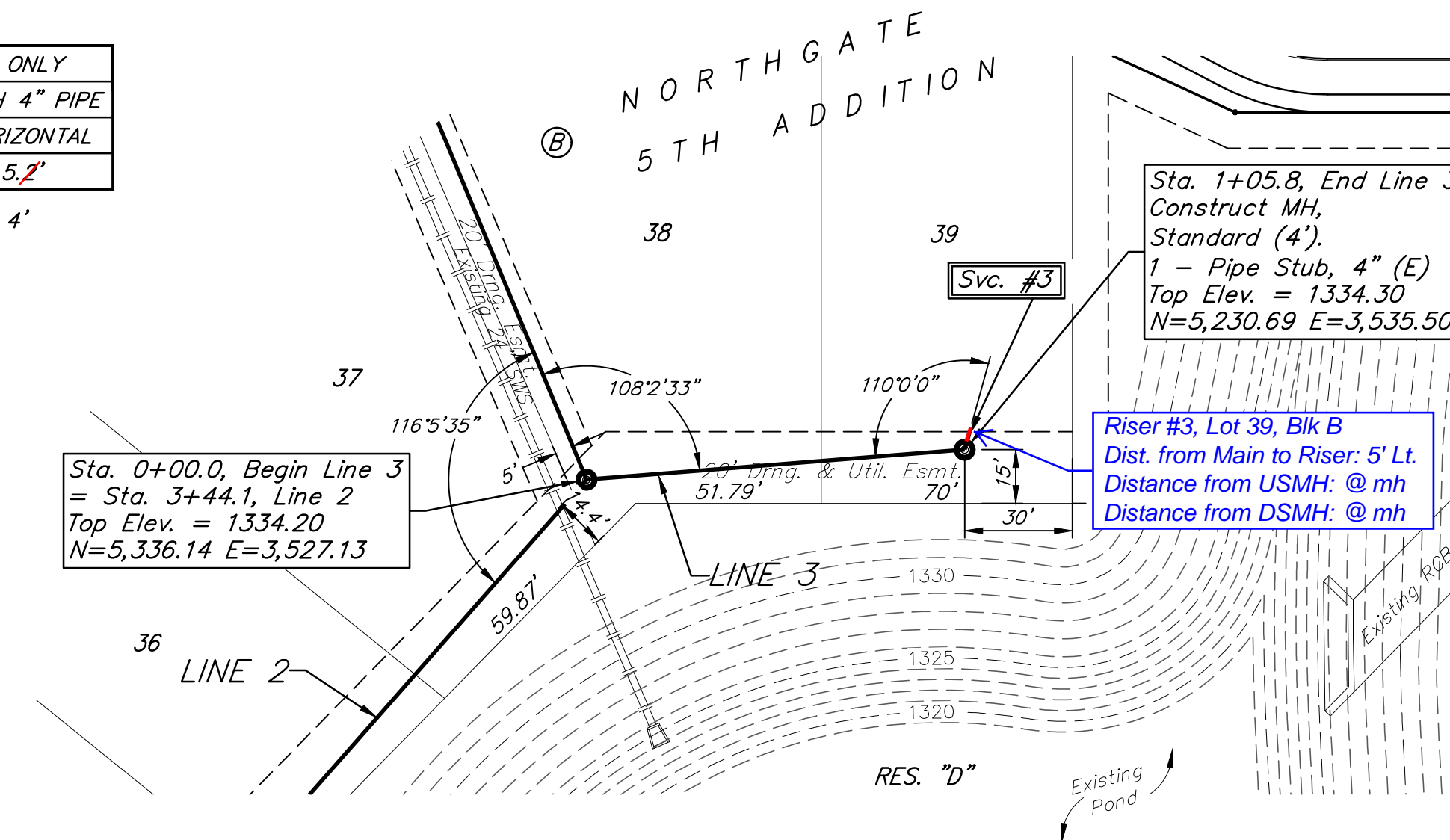
BENCHMARKS:
 BM #1: "+" in entrance on the north side of 53rd St. N., ~890' west of Meridian.
 Elev. = 1333.90 (NAVD88)

BM #2: "+" on the south side of manhole rim, 20' east and 5' south of the NW corner of Lot 3, Block B, Northgate 5th Addition.
 Elev. = 1335.53 (NAVD 88)

SEWER SERVICE TABLE

NUMBER	TYPE	LOCATION			STATION \ DIRECTION	FOR INFORMATION ONLY	
		LOT NO.	BLOCK NO.	LINE NO.		APPROXIMATE LENGTH 4" PIPE	VERTICAL
3	4" Stub	39	B	3	1+05.8/Lt.	-	5.2'

NOTE: Vertical Riser Pipe shall be extended to 2' minimum above ground water elevation and 4' maximum below proposed ground elevation.



BAUGHMAN COMPANY
 315 Ellis St.
 Wichita, KS 67211
 316-262-7271
 BaughmanCo.com

NORTHGATE 5TH ADD.
 Phase 6

LINE 3

SANITARY SEWER IMPROVEMENTS

PROJECT NUMBER:
 22-08-E286

DESIGN: AEG DRAWN: TMS
 DATE: January 17, 2023

SHEET **6** OF **18**

File: E:\Projects\Northgate 5th Addition_20-03-P538\Engineering\Phase 6\SS 22-08-E286\Sewer.dwg

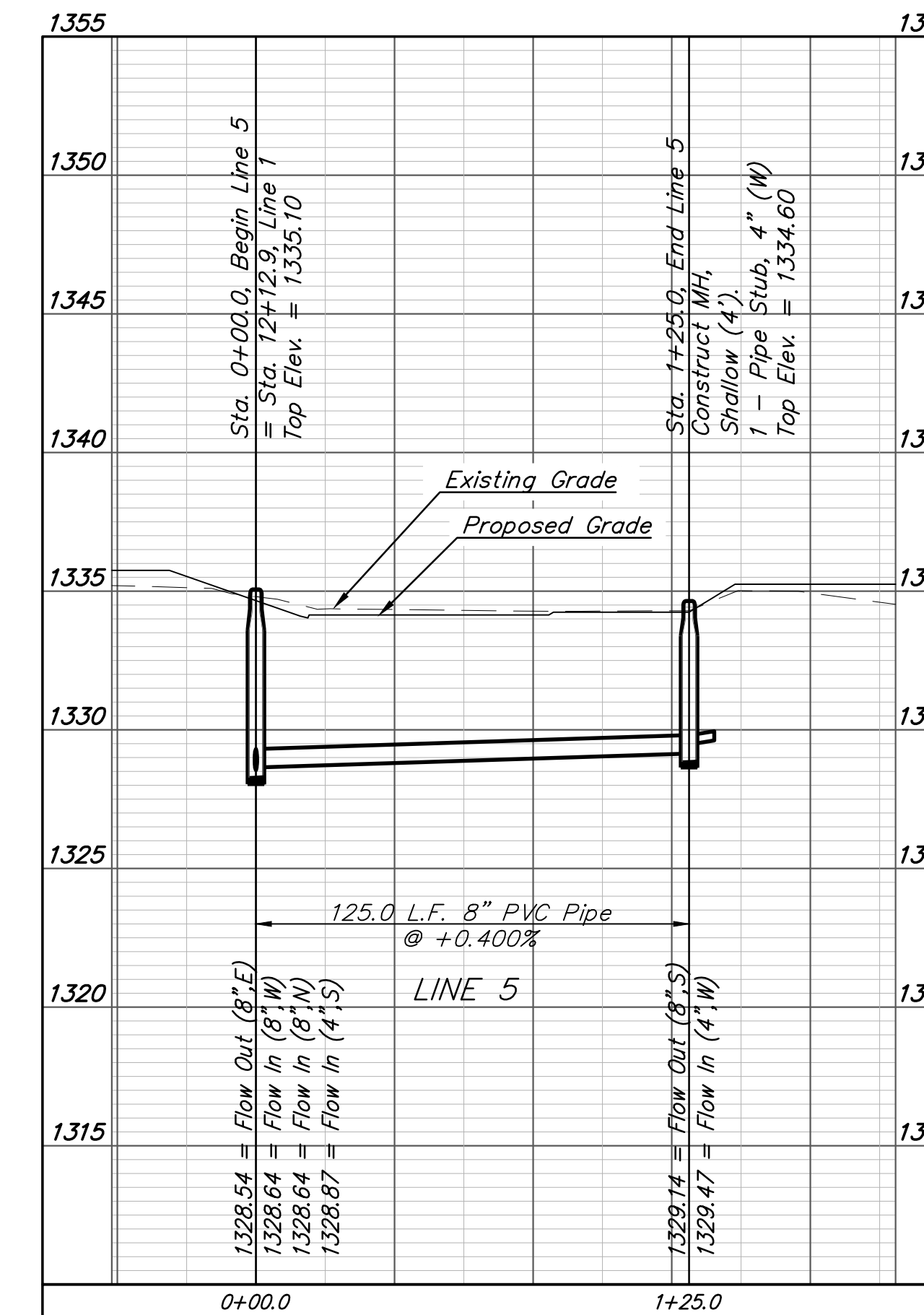
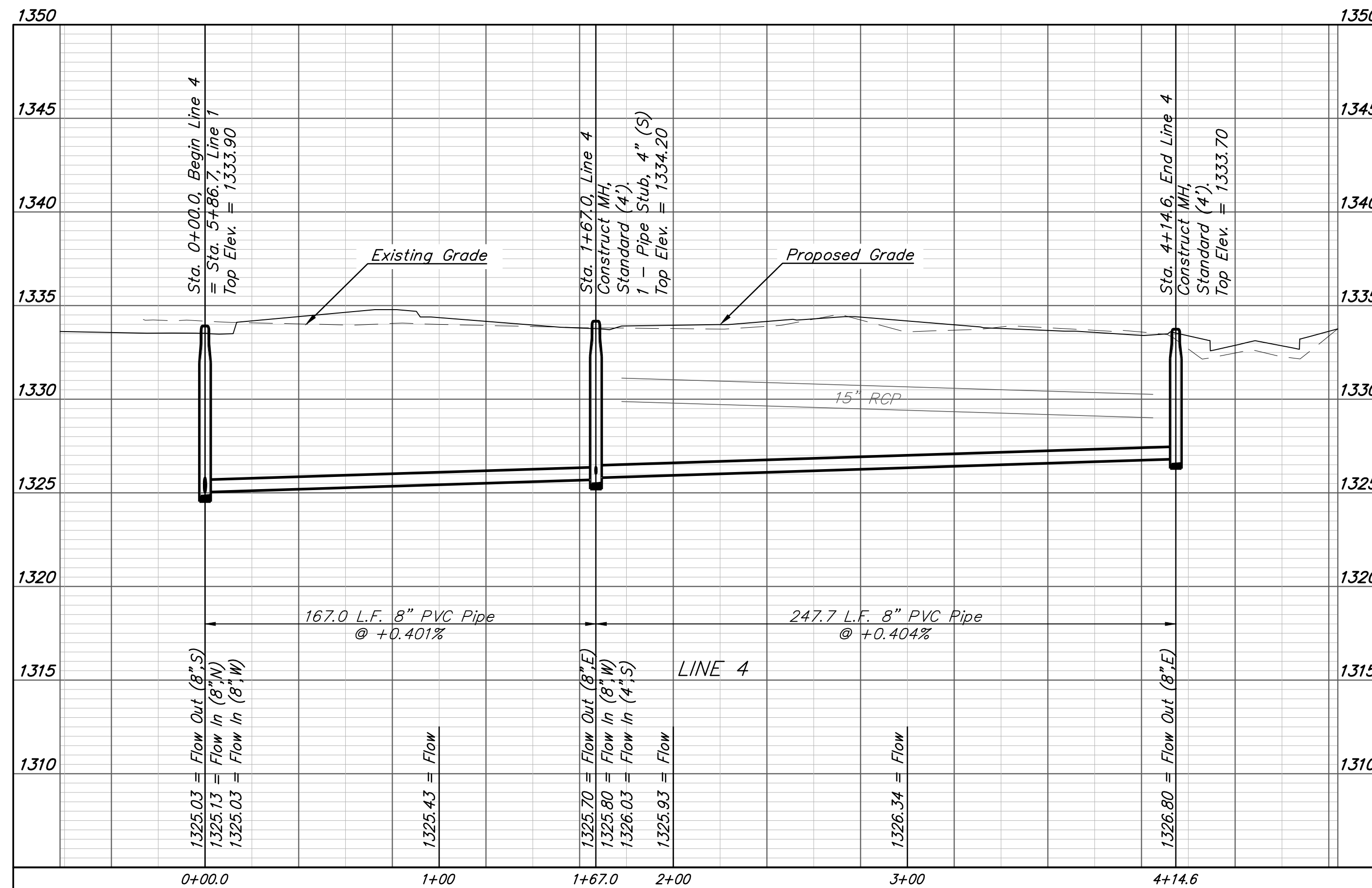
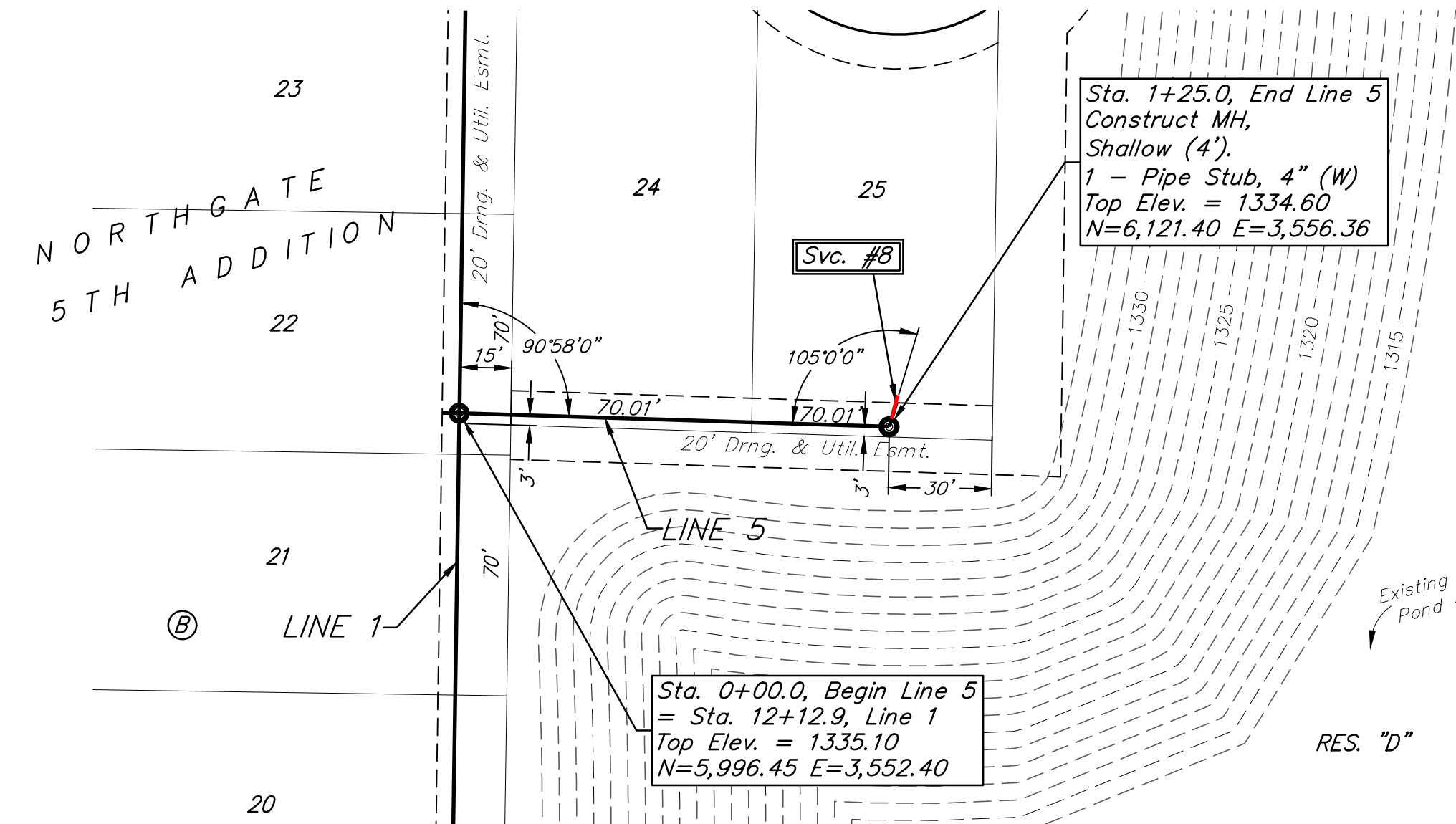
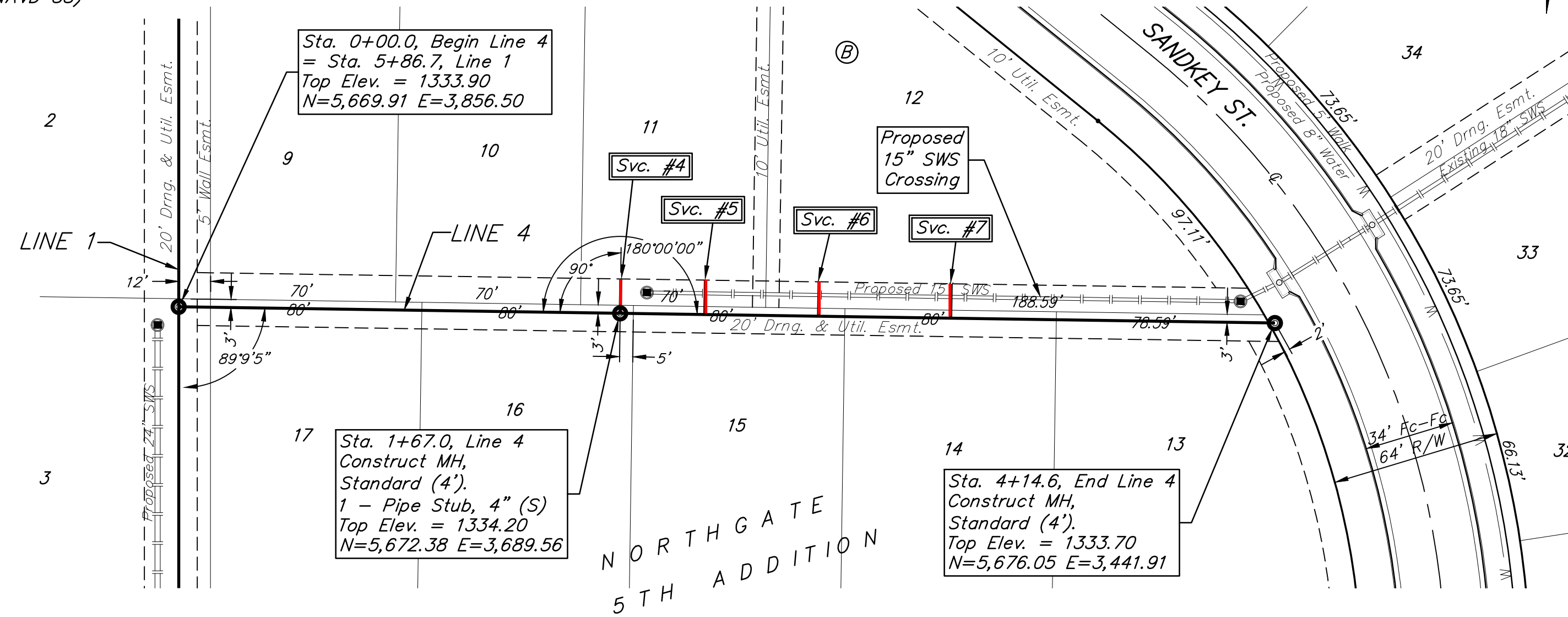
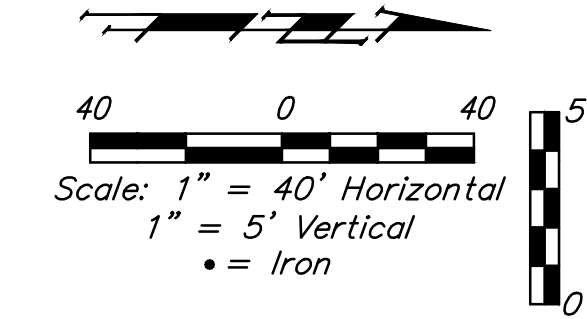
SEWER SERVICE TABLE

NUMBER	TYPE	LOCATION			STATION \ DIRECTION	FOR INFORMATION ONLY		DISTANCE FROM MAIN TO RISER (LT./RT.)	DISTANCE FROM	
		LOT NO.	BLOCK NO.	LINE NO.		APPROXIMATE LENGTH 4" PIPE	VERTICAL		HORIZONTAL	UPSTREAM MH
4	4" Stub	11	B	4	1+67.0/Lt.	-	13.0'	13' Lt.	@ mh	@ mh
5	8" X 4" Tee W/Riser	11	B	4	1+99.0/Lt.	-	13.0'	13' Lt.	216'	32'
6	8" X 4" Tee W/Riser	12	B	4	2+42.0/Lt.	-	13.0'	13' Lt.	173'	75'
7	8" X 4" Tee W/Riser	12	B	4	2+92.0/Lt.	-	13.0'	13' Lt.	123'	125'
8	4" Stub	25	B	5	1+25.0/Lt.	-	7.7'	8' Lt.	@ mh	@ mh

NOTE: Vertical Riser Pipe shall be extended to 2' minimum above ground water elevation and 4' maximum below proposed ground elevation.

BENCHMARKS:
 BM #1: "+" in entrance on the north side of 53rd St. N., ~890' west of Meridian.
 Elev. = 1333.90 (NAVD88)

BM #2: "+" on the south side of manhole rim, 20' east and 5' south of the NW corner of Lot 3, Block B, Northgate 5th Addition.
 Elev. = 1335.53 (NAVD 88)



BAUGHMAN COMPANY

315 Ellis St.
 Wichita, KS 67211
 316-262-7271
 BaughmanCo.com

NORTHGATE 5TH ADD.
 Phase 6

LINE 4&5

SANITARY SEWER IMPROVEMENTS

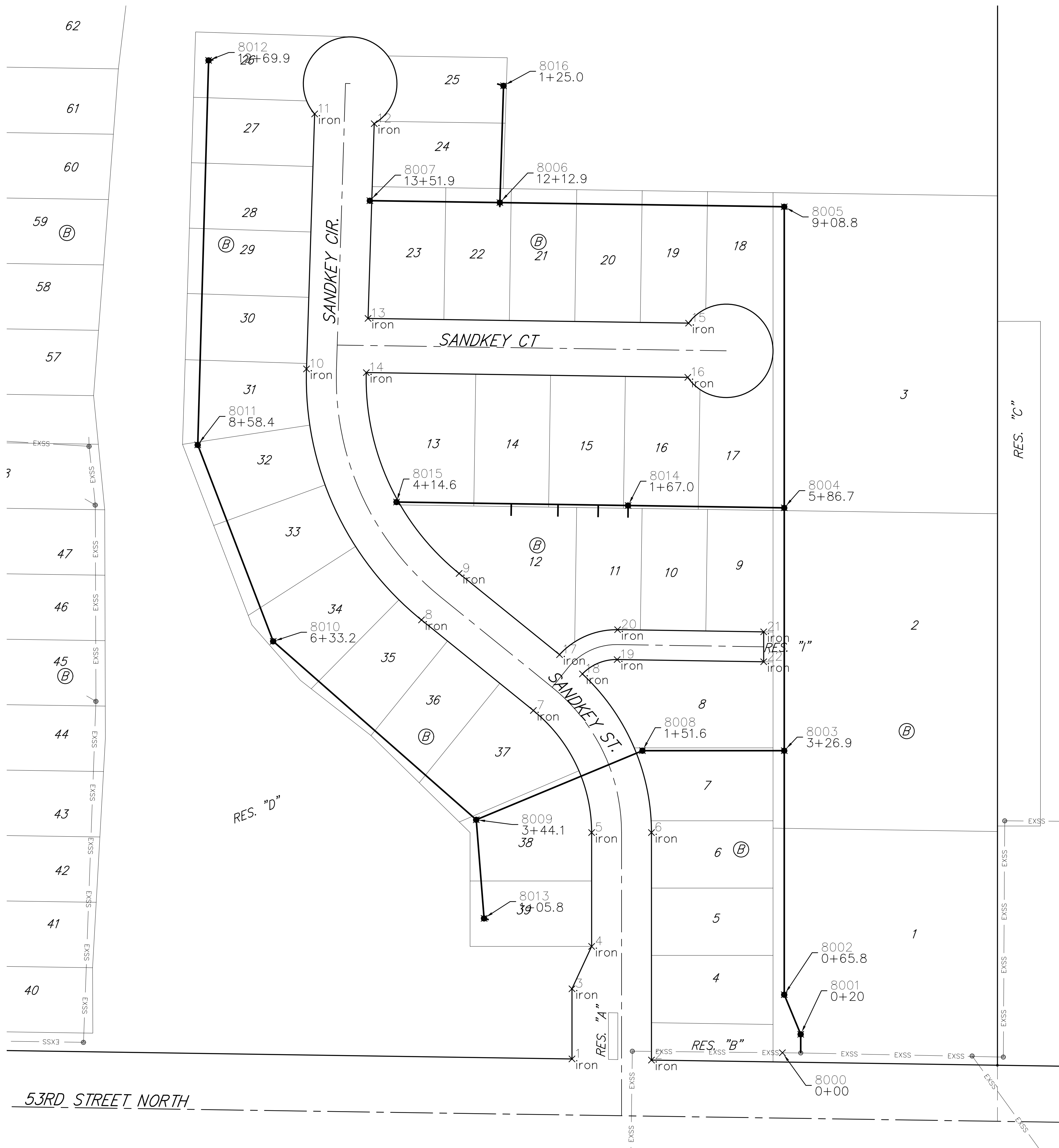
PROJECT NUMBER:
 22-08-E286

DESIGN: AEG DRAWN: TMS

DATE: January 17, 2023

SHEET **7** OF **18**

File: E:\Projects\Northgate 5th Addition_20-03-P538\Engineering\Phase 6\SS 22-08-E286\Sewer.dwg

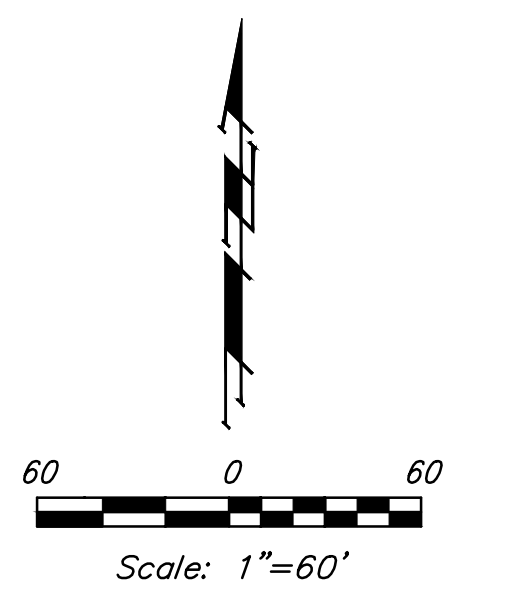


IRONS

Point Table			
Point #	Northing	Easting	Raw Description
1	5080.31	3629.50	iron
2	5079.05	3714.50	iron
3	5155.31	3629.50	iron
4	5200.69	3650.50	iron
5	5322.48	3650.50	iron
6	5322.48	3714.50	iron
7	5453.04	3588.23	iron
8	5549.94	3468.56	iron
9	5599.68	3508.84	iron
10	5818.47	3345.66	iron
11	6091.31	3354.31	iron
12	6080.84	3418.01	iron
13	5872.52	3411.40	iron
14	5814.54	3409.57	iron
15	5867.44	3754.20	iron
16	5809.45	3753.34	iron
17	5512.75	3616.19	iron
18	5492.14	3640.73	iron
19	5507.54	3677.79	iron
20	5539.53	3678.26	iron
21	5537.22	3834.50	iron
22	5505.21	3834.50	iron

SANITARY SEWER

Point Table			
Point #	Northing	Easting	Raw Description
8000	5086.90	3854.50	0+00
8001	5106.69	3874.10	0+20
8002	5149.01	3856.50	0+65.8
8003	5410.05	3856.50	3+26.9
8004	5669.91	3856.50	5+86.7
8005	5991.94	3856.50	9+08.8
8006	5996.45	3552.40	12+12.9
8007	5998.51	3413.40	13+51.9
8008	5410.05	3704.88	1+51.6
8009	5336.14	3527.13	3+44.1
8010	5527.07	3310.02	6+33.2
8011	5737.22	3229.32	8+58.4
8012	6148.56	3240.91	12+69.9
8013	5230.69	3535.50	1+05.8
8014	5672.38	3689.56	1+67.0
8015	5676.05	3441.91	4+14.6
8016	6121.40	3556.36	1+25.0







**BAUGHMAN
COMPANY**

315 Ellis St.
Wichita, KS 67211
316-262-7271
BaughmanCo.com

NORTHGATE 5TH ADD.
Phase 6

**COORDINATE
SHEET**

SANITARY SEWER
IMPROVEMENTS

PROJECT NUMBER:
22-08-E286

DESIGN: AEG DRAWN: TMS
DATE: January 17, 2023

SHEET **17** OF **18**

53RD STREET NORTH

File: E:\Projects\Northgate 5th Addition_20-03-P538\Engineering\Phase 6\SS 22-08-E286\Sewer.dwg