

SANITARY SEWER TO SERVE PANDA EXPRESS- 2672 N. GREENWICH COURT CITY OF WICHITA, KANSAS

SHAWN MELLIES, P.E. CHIEF DESIGN ENGINEER
2022-024206 PPS (53030982)

D. Reinhardt - City of Wichita, Inspector
Release Date: 6/9/2023
apr 6/20/2023

AS BUILTS

Contractor:

Project Inspector:

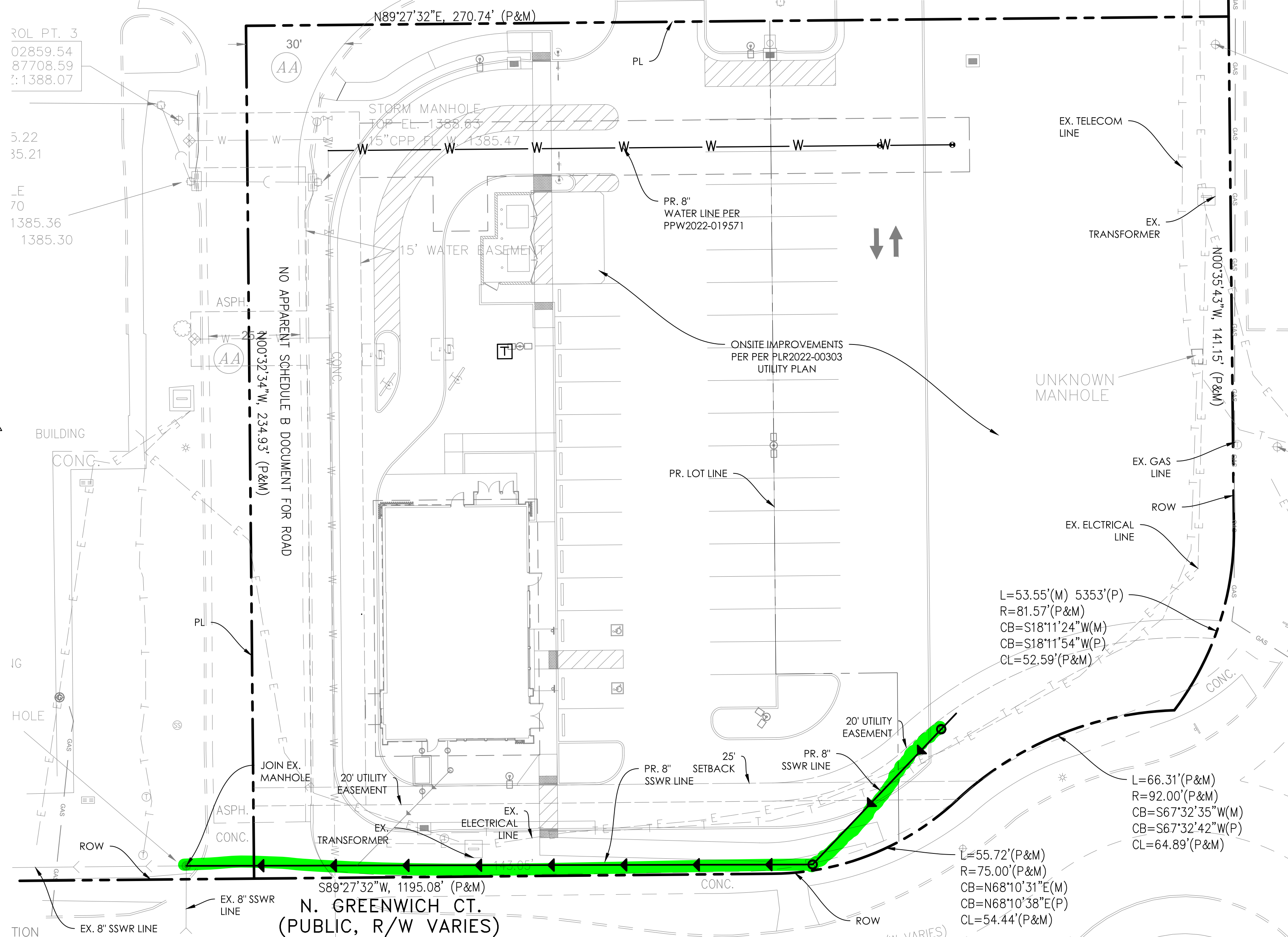
Apex
21 May 23

Eric Miner
KEMILLER
ENGINEERING PA
117 E. Lewis, Wichita, KS 67202 (316)264-0242



PPS GENERAL NOTES

- THE CONTRACTOR SHALL COMPLY WITH ALL APPLICABLE SAFETY REGULATIONS. ALL CONSTRUCTION SHALL BE COMPLETED FOLLOWING CURRENT CITY STANDARD SPECIFICATIONS AND SPECIAL PROVISIONS.
- CONTRACTOR WILL BE REQUIRED TO PROVIDE NOTICE TO UTILITY COMPANIES A MINIMUM OF SEVENTY-TWO (72) HOURS PRIOR TO ANY EXCAVATION, AS FOLLOWS:
KANSAS ONE - CALL 687-2470
THE CONTRACTOR MUST NOTIFY THE FOLLOWING IN CASE OF AN EMERGENCY:
AT&T 1-800-248-8464
BLACK HILLS ENERGY 1-800-894-8889
CITY OF WICHITA WATER & SEWER 1-316-219-8921
CITY OF WICHITA STORMWATER 1-316-268-4950
CITY OF WICHITA TRAFFIC 1-316-268-4034
COX COMMUNICATIONS 1-888-248-3530
KANSAS GAS SERVICE 1-888-482-4950
EVERGY 1-800-544-4857
- UTILITY SERVICE LINE, POLES, ETC. ARE TO BE ADJUSTED AS NECESSARY BY OTHERS PRIOR TO CONSTRUCTION UNLESS THE PLANS SPECIFICALLY CALL FOR THEIR ADJUSTMENT BY THE CONTRACTOR OR UNLESS THE PLANS SPECIFICALLY IDENTIFY A UTILITY TO BE ADJUSTED BY ITS OWNER DURING CONSTRUCTION. EXISTING UTILITIES AND THEIR LOCATION, AS SHOWN ON THE PLANS, REPRESENT THE BEST INFORMATION OBTAINABLE FOR DESIGN. THE CONTRACTOR WILL BE REQUIRED TO WORK AROUND EXISTING UTILITIES WITHIN THE RIGHT-OF-WAY WHICH DO NOT CONFLICT WITH PROPOSED CONSTRUCTION. RUBBLE FROM THE REMOVAL OF MISCELLANEOUS STRUCTURES AND EXCESS EXCAVATION WHICH IS TO BE WASTED SHALL BE DISPOSED OF ON SITES TO BE PROVIDED BY THE CONTRACTOR. THESE SITES SHALL BE APPROVED BY THE ENGINEER AS TO SUITABILITY, APPEARANCE AND SITE LOCATION. LOCATIONS, IN THE OPINION OF THE ENGINEER, THAT WILL LEAVE AN UNSIGHTLY APPEARANCE WILL NOT BE APPROVED. ALL DISPOSAL SITES MUST BE APPROVED BY THE KANSAS DEPARTMENT OF HEALTH AND ENVIRONMENT. MATERIAL EITHER STOCKPILED OR DISPOSED OF IN A FLOOD PLAIN WILL REQUIRE A KANSAS STATE BOARD OF AGRICULTURE PERMIT. ANY MATERIAL DUMPED IN WATERS OF THE UNITED STATES OR WETLANDS IS SUBJECT TO U.S. CORPS OF ENGINEERS PERMITTING REGULATIONS. ANY MATERIAL BURIED OR STOCKPILED BEYOND APPROVED CONSTRUCTION LIMITS WILL REQUIRE ADDITIONAL ARCHAEOLOGICAL INVESTIGATIONS UNLESS BURIED IN A PREVIOUSLY APPROVED BARRIAGE LOCATION.
- TREES AND SHRUBS IN PUBLIC RIGHT-OF-WAY WHICH ARE IN DIRECT CONFLICT WITH PROPOSED NEW CONSTRUCTION SHALL BE REMOVED BY THE CONTRACTOR WITH THE CITY ENGINEER'S APPROVAL. TREES AND SHRUBS WHICH ARE NOT IN DIRECT CONFLICT WITH PROPOSED NEW CONSTRUCTION SHALL BE SAVED AND PROTECTED FROM DAMAGE.
- THE CONTRACTOR SHALL GIVE ALL PROPERTY OWNERS AND/OR TENANTS OF DEVELOPED PROPERTY ADJACENT TO THE CONSTRUCTION OF THIS PROJECT A MINIMUM OF TEN (10) DAYS NOTICE PRIOR TO START OF CONSTRUCTION.
- THE CONTRACTOR SHALL BE RESPONSIBLE FOR PRESERVING PROPERTY IRONS. THE CONTRACTOR WILL BE REQUIRED TO RE-ESTABLISH ANY PROPERTY IRONS WHICH ARE DAMAGED OR DESTROYED BY HIS CONSTRUCTION OPERATIONS. SUCH IRONS SHALL BE RE-ESTABLISHED BY A LICENSED LAND SURVEYOR IN ACCORDANCE WITH STATE LAWS.
- THE ENGINEERING DIVISION SHALL FIELD LOCATE WATER VALVES ONE TIME DURING CONSTRUCTION WHEN REQUESTED BY THE CONTRACTOR. IT SHALL BE THE CONTRACTOR'S RESPONSIBILITY TO PRESERVE SUCH FIELD LOCATIONS DURING THE CONSTRUCTION PROCESS. WATER VALVES, VALVE BOXES OR FIRE HYDRANTS DAMAGED DURING CONSTRUCTION SHALL BE REPAIRED BY CONTRACTOR OF HIS OWN EXPENSE. VALVE BOXES AND WATER METERS WITHIN THE PROJECT LIMITS SHALL BE ADJUSTED TO MATCH FINAL GRADES BY THE CONTRACTOR.
- THE CONTRACTOR SHALL NOTIFY THE INSPECTING ENGINEER AND DAWNITA REINHARDT AT 316-850-0740 WITH THE CITY OF WICHITA WITH THE ANTICIPATED CONSTRUCTION START DATE AND NOTIFY THEM OF PROJECT COMPLETION. STAKING AND INSPECTION FOR THIS PROJECT WILL BE THE RESPONSIBILITY OF THE CONTRACTOR.
- IF TRAFFIC WILL BE IMPACTED BY CONSTRUCTION, A TRAFFIC CONTROL PLAN MUST BE SUBMITTED AND APPROVED BY THE CITY TRAFFIC ENGINEER, MIKE ARMOR AT TRAFFIC@CITYOFWICHITA.GOV BEFORE CONSTRUCTION CAN BEGIN. THE CONTRACTOR SHALL BE RESPONSIBLE FOR ALL TRAFFIC CONTROL MEASURES TO FACILITATE CONSTRUCTION. ALL CONSTRUCTION ZONE MARKINGS AND SIGNAGE SHALL CONFORM TO THE LATEST VERSION OF THE MANUAL ON UNIFORM TRAFFIC CONTROL DEVICES (MUTCD) AS PUBLISHED BY THE US DEPT. OF TRANSPORTATION, FEDERAL HIGHWAY ADMINISTRATION. ALL COSTS ASSOCIATED WITH CONSTRUCTION MARKINGS AND SIGNAGE SHALL BE THE CONTRACTOR'S RESPONSIBILITY.
- ALL ELEVATIONS SHOWN ARE NAVD 88.
- ALL AREAS DISTURBED DURING CONSTRUCTION THAT WILL NOT BE UNDER PROPOSED PAVEMENT SHALL BE RESTORED TO MATCH EXISTING CONDITIONS.
- ANY SIDEWALK, DRIVE APPROACH, CURB, OR STREET PAVEMENT REMOVED TO CONSTRUCT PROJECT MUST HAVE A PAVEMENT CUT PERMIT AND BE REPLACED BY THE CITY CONTRACTOR. PERMITS CAN BE OBTAINED BY CALLING 316-268-4501 OR 316-268-4480.
- ALL APPLICABLE FEES (TOP, EQUITY, IN LIEU OF A MAIN BENEFIT) MUST BE PAID BEFORE ANY CONNECTIONS CAN BE MADE ON THIS PROJECT. QUOTES CAN BE OBTAINED ON FEES BY CALLING 316-268-4555.
- CITY MAINTENANCE OF SANITARY SEWER MAINS ENDS AT LAST STRUCTURE WITHIN THE EASEMENT OR RIGHT-OF-WAY.
- ALL STUBS AND CAPPED PIPES SHALL BE LOCATED WITH GREEN PLASTIC TAPE IN THE SAME MANNER AS RISERS.
- CONNECTING TO EXISTING MANHOLES:
PRIOR TO LAYING SEWER LINES USING EXISTING STUBS IN EXISTING MANHOLES, THE CONTRACTOR SHALL EXPOSE AND VERIFY THE ELEVATION, GRADE AND ALIGNMENT OF EXISTING STUBS AND NOTIFY THE ENGINEER OF ANY DEVIATION FROM THE PLANS. WHERE THE STUB IS UNUSABLE DUE TO ELEVATION GRADE OR ALIGNMENT, THE CONTRACTOR SHALL REMOVE THE STUB AND PLUG THE HOLE, AND RESHAPE THE EXISTING MANHOLE INVERT TO PROVIDE SMOOTH FLOW. WHERE CONNECTING TO AN EXISTING MANHOLE THAT DOES NOT HAVE AN EXISTING STUB, THE CONTRACTOR SHALL CORE CUT INTO EXISTING MANHOLE WALL TO MAKE CONNECTION USING APPROVED WATER STOP GASKET, AND RESHAPE THE EXISTING MANHOLE INVERT TO PROVIDE SMOOTH FLOW. THE COST TO CONNECTING TO EXISTING MANHOLES IS INCIDENTAL TO THE PROJECT.
- CONTRACTOR SHALL LIMIT THE EXTENT OF TRENCH OPEN OVERNIGHT AND WEEKENDS TO LESS THAN 50 FEET.
- CONTRACTOR SHALL PROVIDE POSITIVE DRAINAGE AWAY FROM ALL MANHOLE COVERS.
- THE CONTRACTOR SHALL PREVENT ANY CONSTRUCTION DEBRIS FROM ENTERING THE EXISTING SANITARY SEWER DURING CONSTRUCTION.
- THE CONTRACTOR SHALL BE RESPONSIBLE FOR MAINTAINING CONTINUOUS FLOW OF SEWAGE THROUGH CONSTRUCTION. CONTRACTOR'S PROPOSED METHOD FOR MAINTAINING SEWAGE FLOW SHALL BE SUBMITTED AND APPROVED BY THE SEWER MAINTENANCE DIVISION (316-268-4073) PRIOR TO STARTING AND BY-PASSING OF SEWAGE FLOWS.
- ANY OVER EXCAVATION FROM MANHOLE AND PIPE REMOVAL SHALL BE BACKFILLED WITH AB-3 COMPACTED TO 90-95% ASTM D688.
- THE CONTRACTOR SHALL PROTECT FROM DAMAGE AND SUPPORT EXISTING UTILITIES THROUGH CONSTRUCTION AS APPROVED BY THE UTILITY OWNER AND THE ENGINEER AT THE CONTRACTORS EXPENSE.



BENCHMARK & CONTROL POINTS

SITE BENCH MARK 1: SQ. CUT
LOCATED AT NORTHEAST CORNER OF INTERSECTION OF GREENWICH CT & GREENWICH RD IN CONCRETE SIDEWALK.
NORTH = 1702852.17
EAST = 1689057.28
ELEVATION = 1374.74

SITE BENCH MARK 2: SQ. CUT
NORTH = 1702859.86
EAST = 1689057.05
ELEVATION = 1365.37

SITE CONTROL POINT: CP #1
NORTH = 1702880.48
EAST = 1687994.29
ELEVATION = 1397.06

SITE CONTROL POINT: CP #2
NORTH = 1702769.60
EAST = 1688911.32
ELEVATION = 1365.77

SITE CONTROL POINT: CP #3
NORTH = 1702859.54
EAST = 1687708.59
ELEVATION = 1388.07

BASIS OF ELEVATIONS

NAVD 88

BASIS OF BEARING

THE BASIS OF BEARINGS FOR THE PREMISES SURVEYED IS BASED ON THE KANSAS STATE PLANE COORDINATE SYSTEM, SOUTH ZONE.

**APPROVED AS NOTED
BY WICHITA PUBLIC WORKS
ENGINEERING DIVISION**

Engineering: SHAWN MELLIES 09/29/22
Utilities: DEB ARY 09/29/22

NOTE TO CONTRACTORS

Inspection and testing for this project is to be provided by a Licensed Consulting Engineering Firm under contract with the Owner/Developer. Said inspection to be in accordance with the City of Wichita standard construction engineering practices and certified by a Licensed Professional Engineer in the state of Kansas. No work shall be performed by the Contractor without such inspection nor shall any work be commenced without written authorization by City Engineering. All Construction and Materials shall comply with the current City of Wichita Specifications and Standards and Special Provisions. (on file and available at Wichita.gov).

An approved copy of these plans signed by City staff are required on-site.

PANDA EXPRESS STANDARD NOTES

- THE GEOTECHNICAL ENGINEERING REPORT PREPARED BY TERRACON (DATED 01/21/2022 AND 09/03/2021) AND ANY SUBSEQUENT ADDENDUMS IS CONSIDERED PART OF THE CONTRACT DOCUMENTS. IT IS THE CONTRACTOR'S RESPONSIBILITY TO COORDINATE THE REPORT'S RECOMMENDATIONS AND FINDINGS WITH THE OWNER, ENGINEER AND ARCHITECT PRIOR TO CONSTRUCTION. IMPLEMENTATION OF THE REPORT'S RECOMMENDATIONS MAY REQUIRE THE CONTRACTOR TO PERFORM ADDITIONAL WORK NOT SHOWN ON THE CIVIL PLANS INCLUDING BUT NOT LIMITED TO EXCAVATION, REMEDIATION, DEWATERING, COMPACTION, ETC.
- CONTRACTOR SHALL COORDINATE AND VERIFY LOCATION OF ALL SIGNAGE WITH OWNER PRIOR TO CONSTRUCTION.
- CONTRACTOR SHALL COORDINATE AND ADJUST LOCATION OF LOOP DETECTORS TO AVOID UTILITY CONFLICTS PRIOR TO CONSTRUCTION.
- CONTRACTOR SHALL ENSURE 100% COVERAGE OF ALL LANDSCAPED AREAS WITHIN LIMITS OF WORK, INCLUDING POTENTIAL OFFSITE AREAS. COVERAGE SHALL INCLUDE BOTH LANDSCAPING AND IRRIGATION.

JURISDICTION	DETAIL NO.	DETAIL DESCRIPTION
CITY OF WICHITA PUBLIC WORKS AND UTILITIES ENGINEERING DIVISION	SS-101	PRECAST SANITARY SEWER MANHOLE
CITY OF WICHITA PUBLIC WORKS AND UTILITIES ENGINEERING DIVISION	SS-102	MANHOLE COVER
CITY OF WICHITA PUBLIC WORKS AND UTILITIES ENGINEERING DIVISION	SS-104	CLEANOUT RISER ASSEMBLY DETAIL
CITY OF WICHITA PUBLIC WORKS AND UTILITIES ENGINEERING DIVISION	SW-501	EROSION CONTROL - CURB INLET PROTECTION CONSTRUCTION ENTRANCE
CITY OF WICHITA PUBLIC WORKS AND UTILITIES ENGINEERING DIVISION	SW-502	EROSION CONTROL - BARRIER DETAILS
CITY OF WICHITA PUBLIC WORKS AND UTILITIES ENGINEERING DIVISION	SW-503	EROSION CONTROL - BARRIER DETAILS

GENERAL NOTES

- CONTRACTOR IS RESPONSIBLE FOR PROVIDING ALL INFORMATION FOR FINAL ACCEPTANCE OF WORK BY ALL FEDERAL, STATE, LOCAL, ETC. AGENCIES OR JURISDICTIONS HAVING APPROVAL AUTHORITY OVER WORK. THIS WORK INCLUDES BUT IS NOT LIMITED TO RECORD DRAWINGS, CERTIFICATIONS, INSPECTIONS AND/OR REPORTS.
- SURVEYOR TO OBTAIN CAD FILE FROM ENGINEER AND VERIFY ALL HORIZONTAL CONTROL DIMENSIONING PRIOR TO CONSTRUCTION. STAKING SURVEYOR SHALL VERIFY ALL BENCHMARK, BASIS OF BEARINGS AND DATUM INFORMATION TO ENSURE IMPROVEMENTS WILL BE AT THE SAME HORIZONTAL AND VERTICAL LOCATIONS SHOWN ON THE DESIGN CONSTRUCTION DRAWINGS. PRIOR TO CONSTRUCTION STAKING ANY DISCREPANCY SHALL BE REPORTED TO OWNER AND ENGINEER PRIOR TO CONTINUATION OF ANY FURTHER STAKING OR CONSTRUCTION WORK.
- CONTRACTOR SHALL COORDINATE WORK WITH UTILITY COMPANIES AND CITY PRIOR TO BEGINNING WORK AND IS RESPONSIBLE FOR ALL MATERIALS, LABOR, REPAIRS, ETC. TO COMPLETE WORK AND RESTORE AREA TO SAME STATE PRIOR TO STARTING WORK.
- PROPOSED IMPROVEMENTS SHOWN ON THESE PLANS ARE BASED UPON THE PROPOSED IMPROVEMENTS BY OTHERS. PRIOR TO STAKING SURVEYOR SHALL VERIFY THE HORIZONTAL AND VERTICAL LOCATIONS OF ALL IMPROVEMENTS BY OTHERS AT THE INDICATED LOCATIONS. VERIFICATION SHALL BE BY LOCATING THE IMPROVEMENTS IN THE FIELD AND/OR CONVERGING THE HORIZONTAL AND VERTICAL CONTROL OF THE LATEST PLANS BY OTHERS MATCHES THE PROPOSED IMPROVEMENTS.
- SURVEY PREPARED BY CORNERSTONE REGIONAL SURVEY, L.L.C. DATED 11/04/2021
- SITE ACCESS CONTROL INCLUDING SAFETY FENCES AND TRAFFIC CONTROL, ALL CONSTRUCTION MEANS AND METHODS, AND SITE SAFETY ARE THE SOLE RESPONSIBILITY OF THE CONTRACTOR.
- THE CONTRACTORS SHALL NOTIFY ALL UTILITY COMPANIES FOR FIELD LOCATIONS OF THEIR FACILITIES PRIOR TO BEGINNING CONSTRUCTION. THE CONTRACTOR WILL BE RESPONSIBLE FOR THE MAINTENANCE AND PRESERVATION OF THESE FACILITIES. ALL UTILITIES SHOWN IN THE PLANS ARE FROM RECORDS OR FIELD OBSERVABLE INFORMATION LOCATED BY SURVEYOR. ANY UTILITY LOCATIONS SHOWN SHALL BE VERIFIED BY THE CONTRACTOR IN THE FIELD.
- PLANS BASED UPON GEOTECHNICAL ENGINEERING REPORT PREPARED BY TERRACON CONSULTANTS, INC. DATED 01/21/2022 TERRACON PROJECT NUMBER 01215183-CFT AND GEOTECHNICAL ENGINEERING REPORT PREPARED BY TERRACON CONSULTANTS, INC. DATED 09/03/2021 TERRACON PROJECT NUMBER 01215183.

CAUTION NOTICE

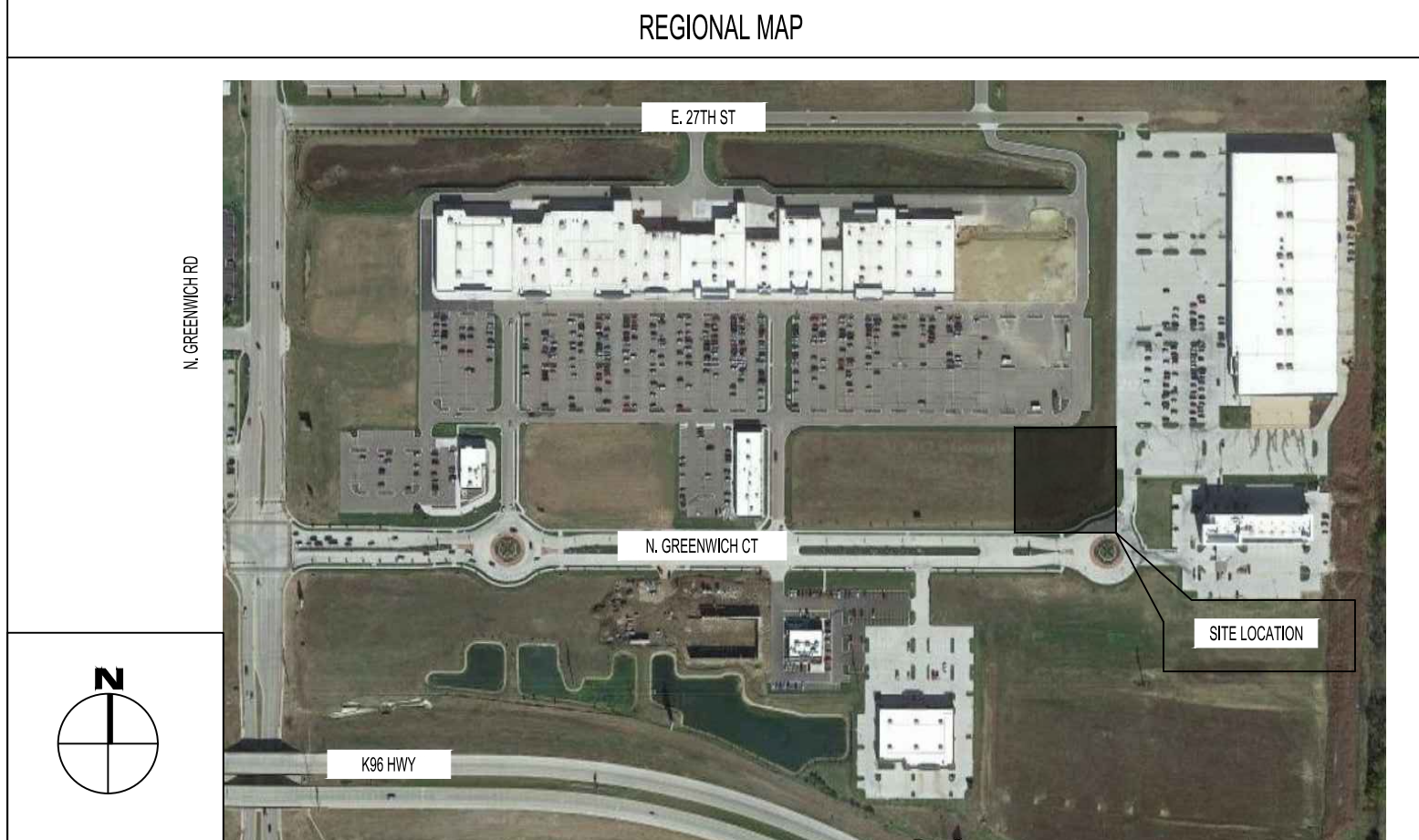
- ALL UTILITY LOCATIONS SHOWN ARE BASED ON MAPS PROVIDED BY THE APPROPRIATE UTILITY COMPANY AND/OR FIELD SURFACE EVIDENCE AT THE TIME OF SURVEY AND IS TO BE CONSIDERED AN APPROXIMATE LOCATION ONLY. IT IS THE RESPONSIBILITY OF THE CONTRACTOR TO FIELD VERIFY THE LOCATION OF ALL UTILITIES, PUBLIC OR PRIVATE, WHETHER SHOWN ON THE PLANS OR NOT, PRIOR TO CONSTRUCTION. REPORT ANY DISCREPANCIES TO THE ENGINEER PRIOR TO INCURRING ANY CONSTRUCTION RELATED COSTS.
- WHERE A PROPOSED UTILITY CROSSES AN EXISTING UTILITY, IT IS THE CONTRACTOR'S RESPONSIBILITY TO FIELD VERIFY THE HORIZONTAL AND VERTICAL LOCATION OF SUCH EXISTING UTILITY, EITHER THROUGH POT-HOLING OR ALTERNATIVE METHOD. REPORT INFORMATION TO THE ENGINEER PRIOR TO CONSTRUCTION.
- ADDITIONAL OR FEWER UTILITIES MAY EXIST THAN SHOWN.

SUMMARY OF QUANTITIES

DESCRIPTION	UNIT	QUANTITY
8" (SCHED. 40) PVC PIPE	LF	224
CORE DRILL CONNECTION TO MANHOLE	EA	1
4" MANHOLE	EA	2



SHEET INDEX		PPS PERMIT SET - 08/17/2022	PPS PERMIT SET - RESUBMITAL - 08/19/2022	PPS PERMIT SET - RESUBMITAL - 09/07/2022	APPROVED PPS PERMIT SET - 09/29/2022
NO.	TITLE				
C01.0	COVER SHEET	●	●	●	●
C01.1	PLAN AND PROFILE	●	●	●	●
C01.2	DETAILS	●	●	●	●
C01.3	DETAILS	●	●	●	●
C01.4	DETAILS	●	●	●	●
C01.5	EROSION CONTROL NOTES	●	●	●	●
C01.6	EROSION CONTROL PLAN	●	●	●	●
C01.7	EROSION CONTROL DETAILS-1	●	●	●	●
C01.8	EROSION CONTROL DETAILS-2	●	●	●	●
C01.9	EROSION CONTROL DETAILS-3	●	●	●	●



PANDA EXPRESS, INC.
1683 Walnut Grove Ave.
Rosemead, California
91770
Telephone: 626.799.9898
Facsimile: 626.372.8288

All ideas, designs, arrangement and plans indicated or represented by this drawing are the property of Panda Express Inc. and were created for use on this specific project. None of these ideas, designs, arrangements or plans may be used by or disclosed to any person, firm, or corporation without the written permission of Panda Express Inc.

REVISIONS:

▲	CITY COM. RESPONSES #1	08-19-22
▲	CITY COM. RESPONSES #2	09-07-22

ISSUE DATE:

DRAWN BY: rtm

PANDA PROJECT #: S8-22-D20060
PANDA STORE #: D20060
ARCH PROJECT #: 21167.000

rtm
engineering consultants
9225 Indian Creek Pkwy
Suite 3075
Overland Park, KS 66210
Telephone: (913) 332-1400
www.rtmec.com
KS Certificate of Authority: E-2641

Heights Venture
ARCHITECTURE • DESIGN

HOUSTON 1111 North Loop West, Suite 800 713 869 1103 V
DALLAS 5717 Legacy Drive, Suite 240 Plano, Texas 75024 972 450 7292 V

PANDA EXPRESS
GREENWICH COURT
WICHITA, KS 67226

PPS
COVER SHEET
C01.0

GREENWICH COURT

PERMIT SET



PANDA EXPRESS, INC.
1683 Walnut Grove Ave.
Rosemead, California
91770
Telephone: 626.799.9898
Facsimile: 626.372.8288

All ideas, designs, arrangement and plans indicated or represented by this drawing are the property of Panda Express Inc. and were created for use on this specific project. None of these ideas, designs, arrangements or plans may be used by or disclosed to any person, firm, or corporation without the written permission of Panda Express Inc.

REVISIONS:

- ▲ CITY COM. RESPONSES #1 08-19-22
- ▲ CITY COM. RESPONSES #2 09-07-22

ISSUE DATE:

DRAWN BY: rtm

PANDA PROJECT #: S8-22-D20060

PANDA STORE #: D20060

ARCH PROJECT #: 21167.000



Heights Venture
ARCHITECTURE DESIGN

HOUSTON 1111 North Loop West, Suite 800 713 869 1103 V
DALLAS 5717 Legacy Drive, Suite 240 Plano, Texas 75024 972 450 7292 V

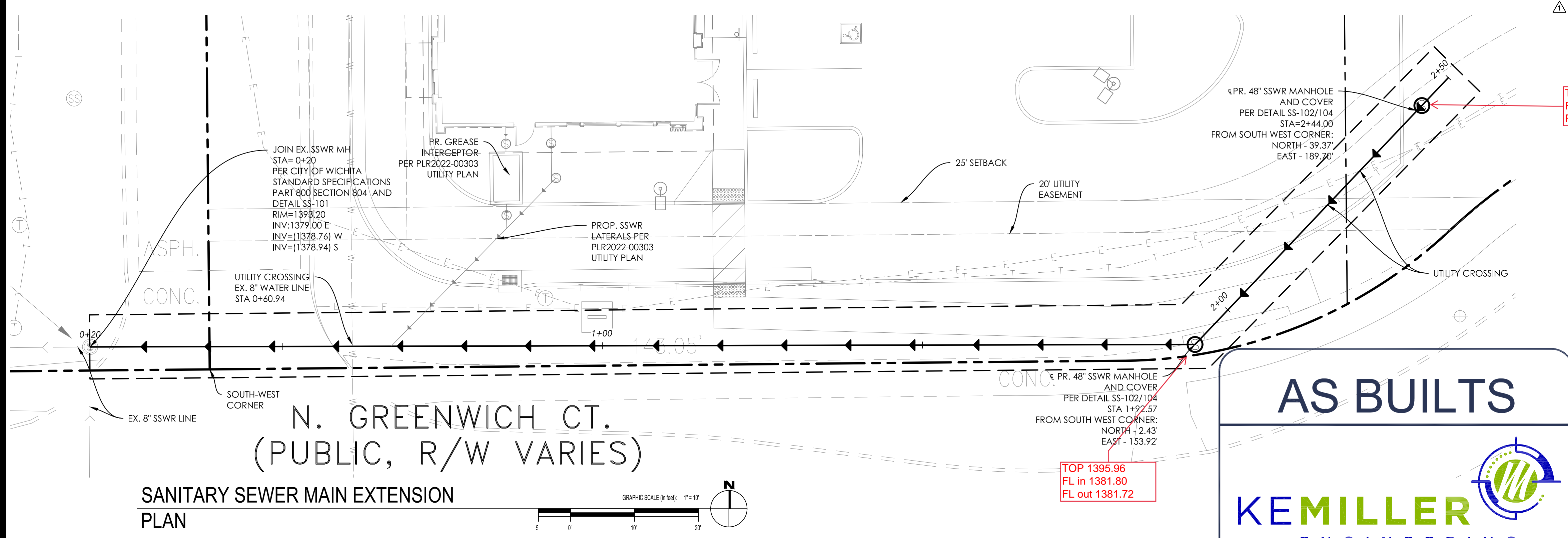
PANDA EXPRESS

GREENWICH COURT
WICHITA, KS 67226

PPS
PLAN AND
PROFILE
C01.1

GREENWICH COURT

PERMIT SET



TOP 1393.90
FL in 1382.60
FL out 1382.50

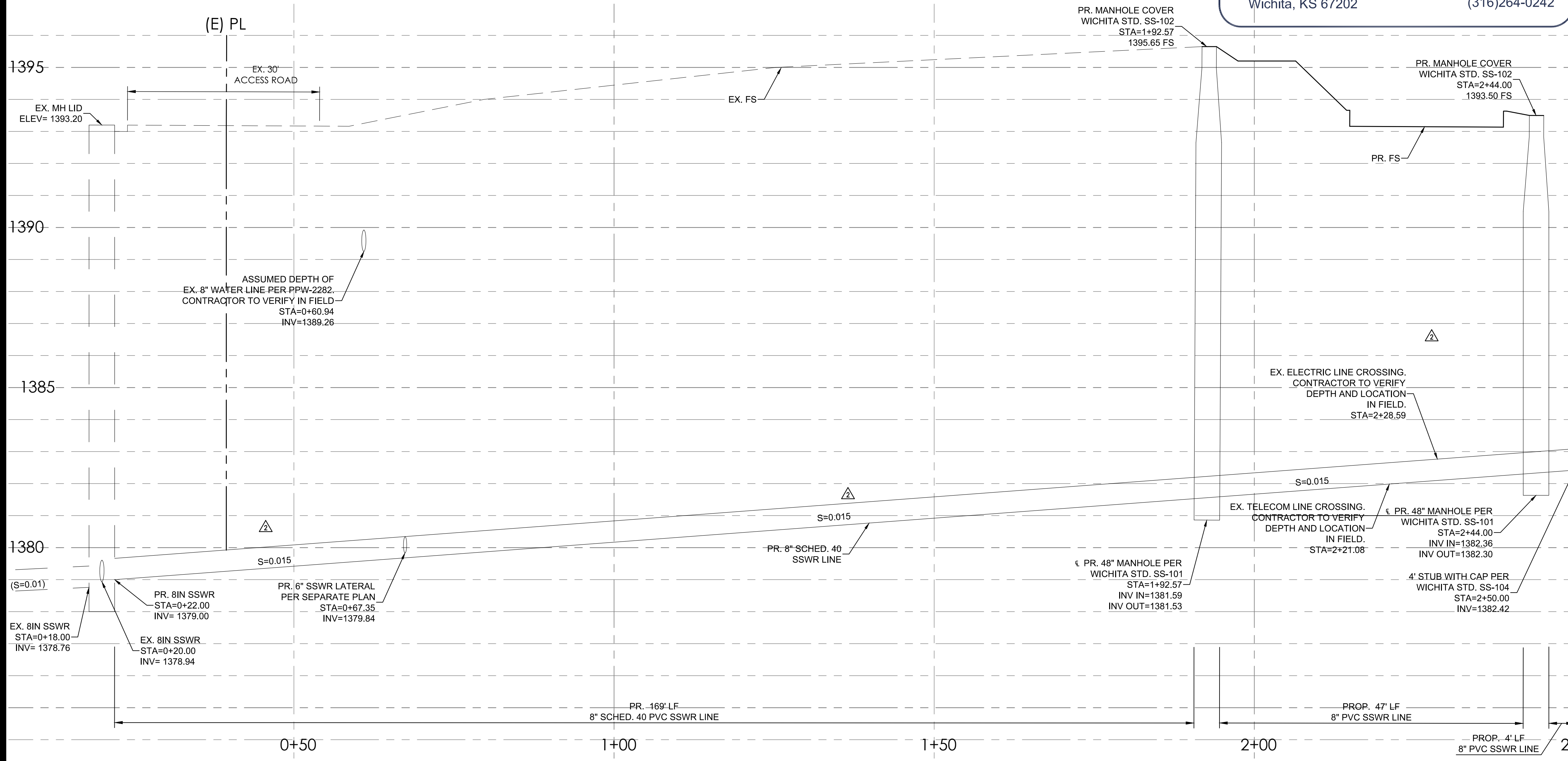
TOP 1395.96
FL in 1381.80
FL out 1381.72

LEGEND:

- | | |
|-----------------------------------------------------------------------------------------------------------------------|----------|
| EXISTING | PROPOSED |
| SANITARY SEWER | → |
| SANITARY SERVICE | → |
| STORM SEWER | → |
| STORM SERVICE | → |
| WATERMAIN | — W — |
| GAS MAIN | — G — |
| TELEPHONE LINE | — TV — |
| ELECTRIC LINE | — E — |
| OVERHEAD WIRES | — OH-W — |
| CATCH BASIN/INLET | ■ ○ |
| STORM MANHOLE | ⊙ |
| SANITARY MANHOLE | ⊗ |
| VALVE BOX/VAULT | ⊕ |
| FIRE HYDRANT | ⊙ |
| B-BOX | ⊙ |
| LIGHTS (SEE BLDG PLANS) | ☆ |
| UTILITY BOX (ELEC, TELE) | ⊠ |
| ELECTRIC METER | ⊠ |
| REMOVE AND REPLACE EX. CURBS, WALKWAYS, PAVEMENT, VEGETATION ETC. MATCH IN KIND AS NEEDED. SEE NOTE 13 ON SHEET C01.0 | ⊠ |

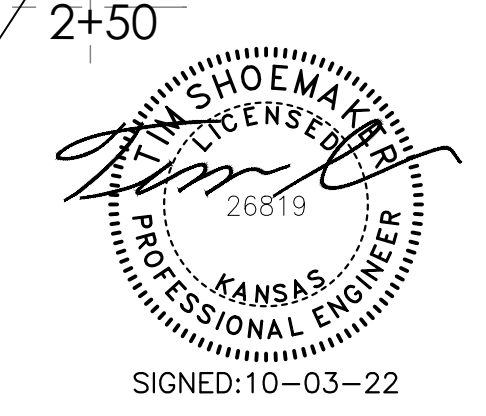
NOTES:

- EX. ITEMS SHALL BE FIELD VERIFIED. RELOCATION OR ADJUSTMENT MAY BE NEEDED. CONTRACTOR TO VERIFY.
- CONTRACTOR SHALL VERIFY ALL WORK, INCLUDING BUT LIMITED TO, SIZES, MATERIALS AND LOCATION, WITH UTILITY COMPANIES PRIOR TO INSTALLATION.
- VERIFY SERVICE LOCATIONS WITH BUILDING PLANS PRIOR TO CONSTRUCTION AND NOTIFY ENGINEER OF ANY DISCREPANCIES.
- REFERENCE PART 800 AND 00 OF CITY OF WICHITA SPECIFICATIONS FOR ALL SANITARY AND WATER PIPE SPECIFICATIONS.
- ALL UTILITY TIE DIMENSIONS ARE FROM CENTER OF UTILITY AND TO BACK OF CURB WHEN TIED TO CURB LINES, UNLESS OTHERWISE NOTED.
- CONTRACTOR TO INSPECT EXISTING SEWER AT POINT OF CONNECTION. CONTRACTOR TO VERIFY THAT EXISTING PIPE IS IN GOOD WORKING CONDITION. CONTRACTOR TO REPAIR AS REQUIRED.
- CONTRACTOR TO NOTIFY OWNER/ENGINEER IF CONFLICTS OCCUR.
- NEW OPENING/CONNECTIONS TO EXISTING MANHOLE/STRUCTURES SHALL BE CORE-DRILLED.
- TEST PITS MUST BE EXCAVATED IN ADVANCE OF CONSTRUCTION IN ORDER TO CONFIRM DEPTH AND LOCATION OF EXISTING UTILITIES. NO ADDITIONAL PAYMENT WILL BE MADE FOR TEST PIT EXCAVATION.
- ALL UTILITY CONSTRUCTION SHALL BE IN ACCORDANCE WITH THE CITY OF WICHITA PUBLIC UTILITIES AND CROSS CONNECTION CONTROL REGULATIONS AND STANDARDS.
- THE CONTRACTOR SHALL OBTAIN AND PAY FOR ALL INSPECTIONS, CERTIFICATIONS, EQUIPMENT ETC., THAT MAY BE REQUIRED. PPS MUST BE REVIEWED AND APPROVED BY A LICENSED P.E. FROM THE STATE OF KANSAS.
- CONTRACTOR SHALL COORDINATE GAS, ELECTRIC AND TELEPHONE CONDUIT, PIPING, AND CONDUCTOR REQUIREMENTS WITH MEP PLANS AND UTILITY PROVIDER PRIOR TO INSTALLATION.
- TRENCH TO BE BACK FILLED WITH FLUSHED AND VIBRATED SAND PER CITY OF WICHITA STANDARDS



SANITARY SEWER MAIN EXTENSION - PROFILE

GRAPHIC SCALE (in feet):
HORIZONTAL: 1" = 10'
VERTICAL: 1" = 2'



SIGNED: 10-03-22