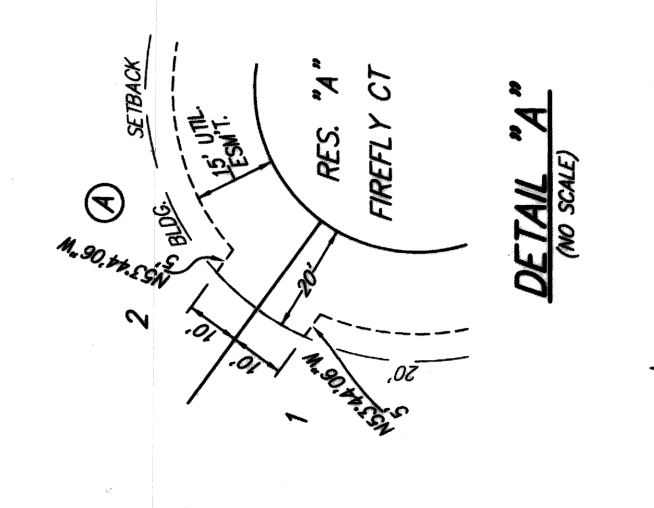
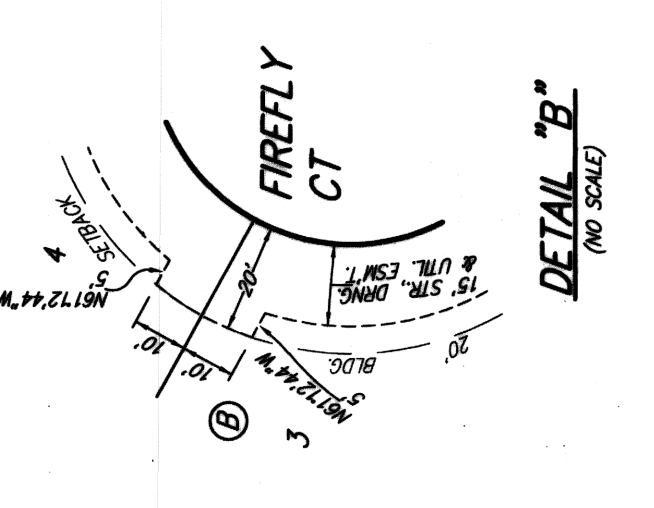
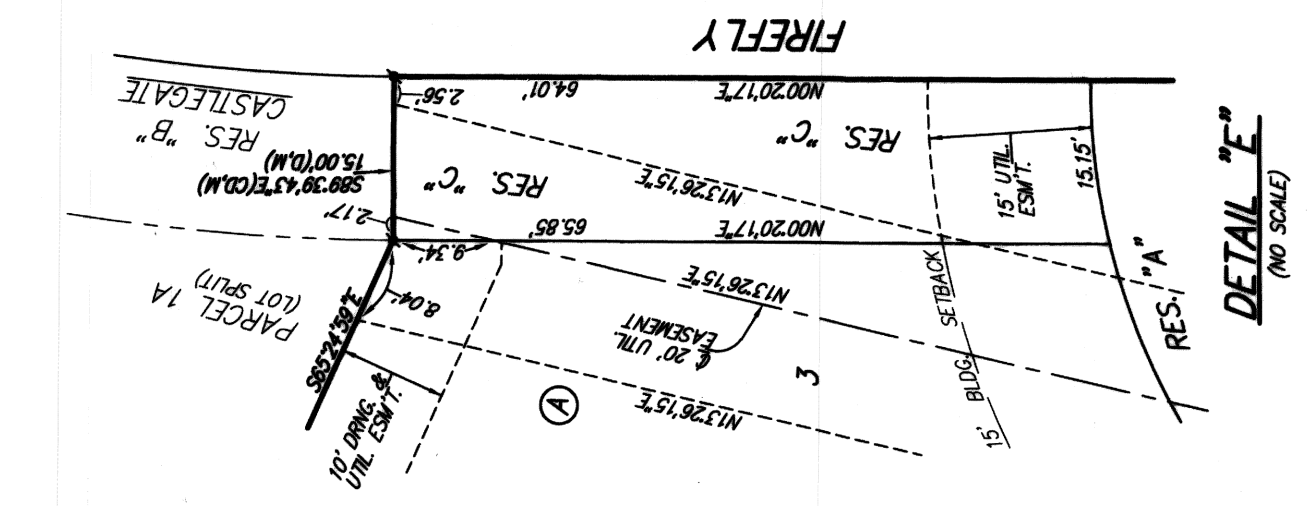
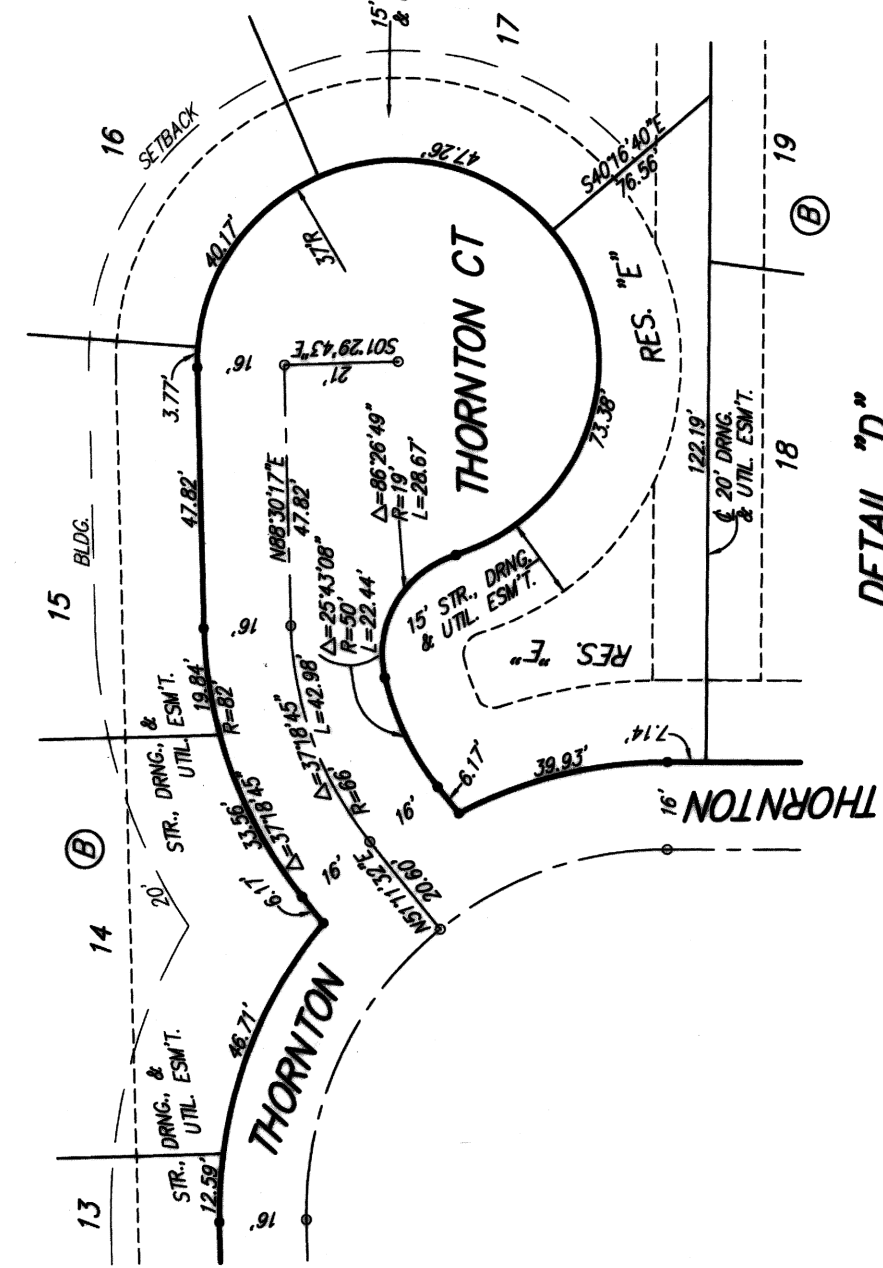
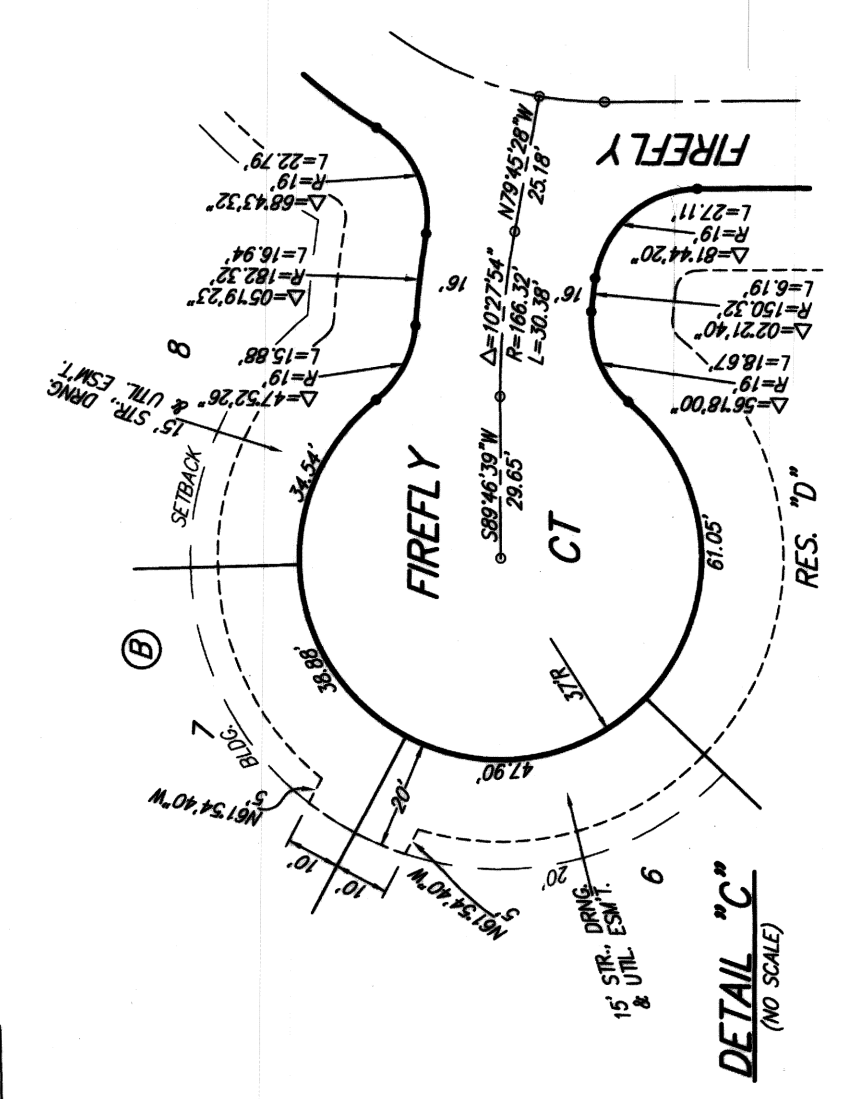
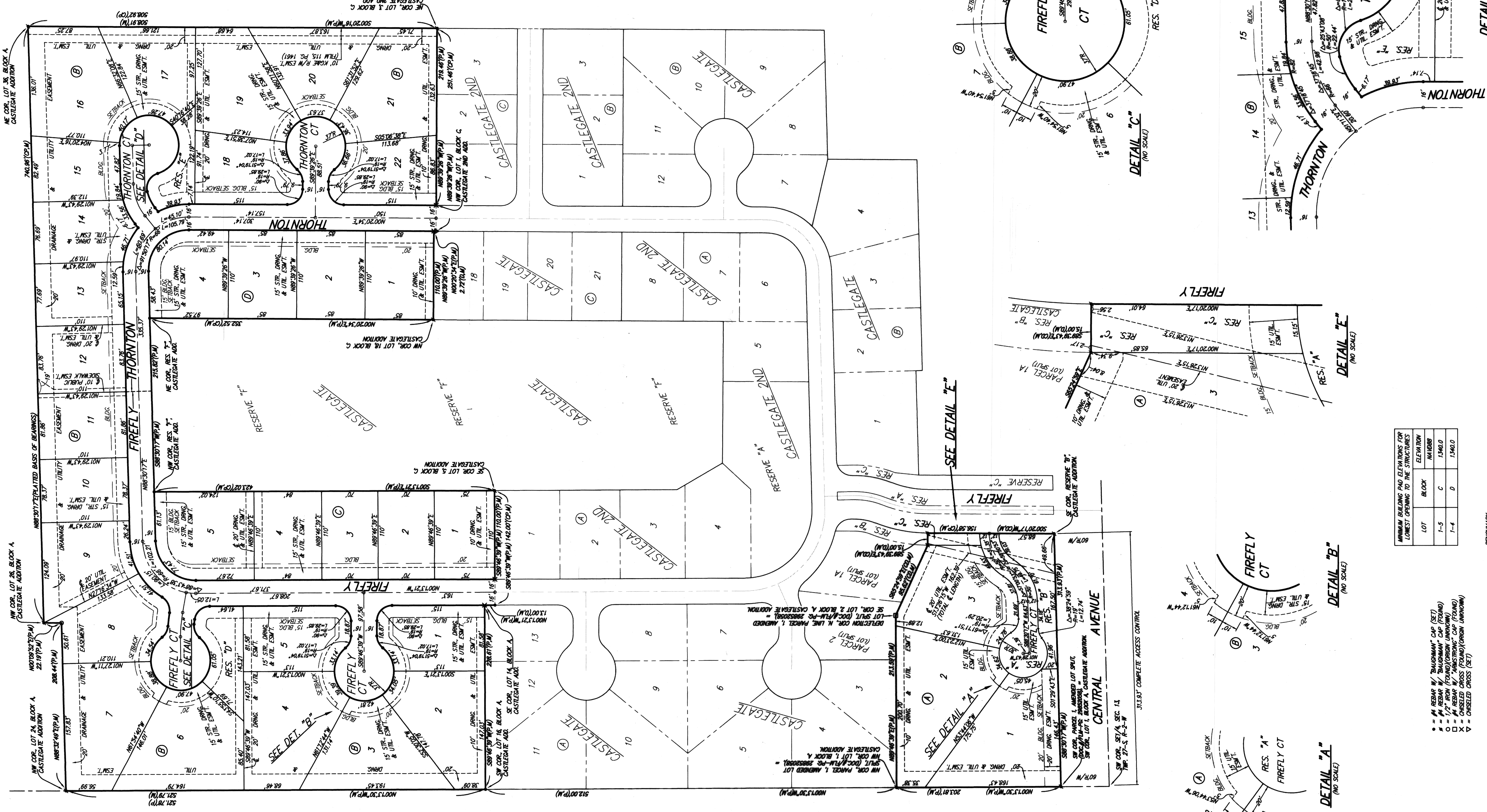


CASTLEGATE 3RD ADDITION WICHITA, SEDGWICK COUNTY, KANSAS

PC 279-98

FOR REFERENCE ONLY
NOT TO SCALE



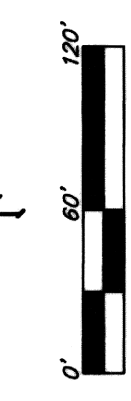
LOT	BLOCK	ELEVATION	NUMBER
1-5	C	1346.0	
1-4	D	1346.0	

DRAINAGE PLAN NOTE:
A master drainage plan has been developed for this plat. All of established grades (unless modified) with the approval of the City Engineer) and shall be constructed to allow for the convenience of abutments of all easements with any drainage facilities. The responsibility of the property owner, and shall be entered by the Homeowner's Association comments.

BENCHMARK:
CHISELED CROSS CUT ON TOP OF CATCH BASIN, NORTH SIDE OF CENTRAL, 25.4' SOUTH & 85.7' WEST OF CORNER OF LOT 1, BLOCK A, CASTLEGATE ADDITION. ELEVATION = 1341.59 (MARIAN)

- M = MEASURED
- A = ASSUMED
- P = PLATTED
- X = CHISELED CROSS (ROUND) OR CHISELED SQUARE
- Δ = CHISELED CROSS (ROUND) OR CHISELED SQUARE

NOTE:
ALL LOTS WITHIN CASTLEGATE 3RD ADDITION SHALL BE A 3 FOOT INTERIOR SETBACK SETBACK.



BAUGHMAN COMPANY, P.A.
115 Elm St., Wichita, KS 67211 P 316-262-7271 F 316-262-0499
ENGINEERING & SURVEYING PLANNING & LANDSCAPE ARCHITECTURE

BAUGHMAN COMPANY
315 Ellis St.
Wichita, KS 67211
316-262-7271
BaughmanCo.com

CASTLEGATE 3RD ADD.
Phase 2

COPY OF PLAT

WATER DISTRIBUTION SYSTEM

PROJECT NUMBER:
22-08-E277

DESIGN: DRAWN:
DATE: May 16, 2023

SHEET **13** OF **13**