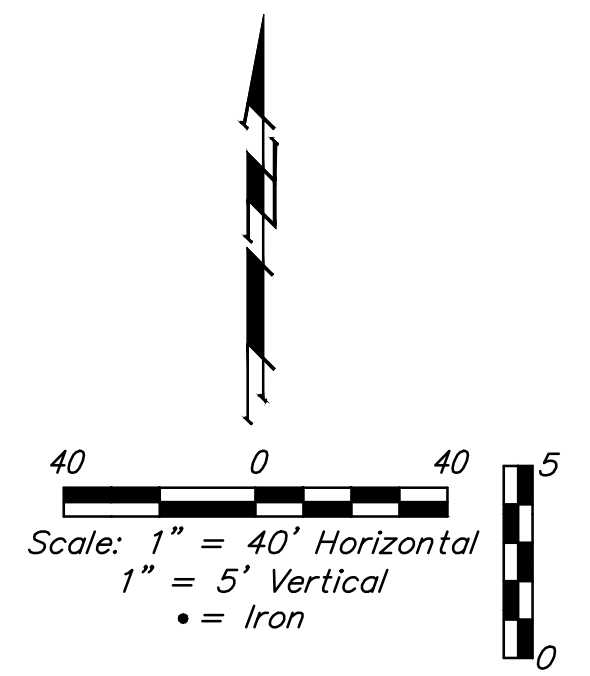
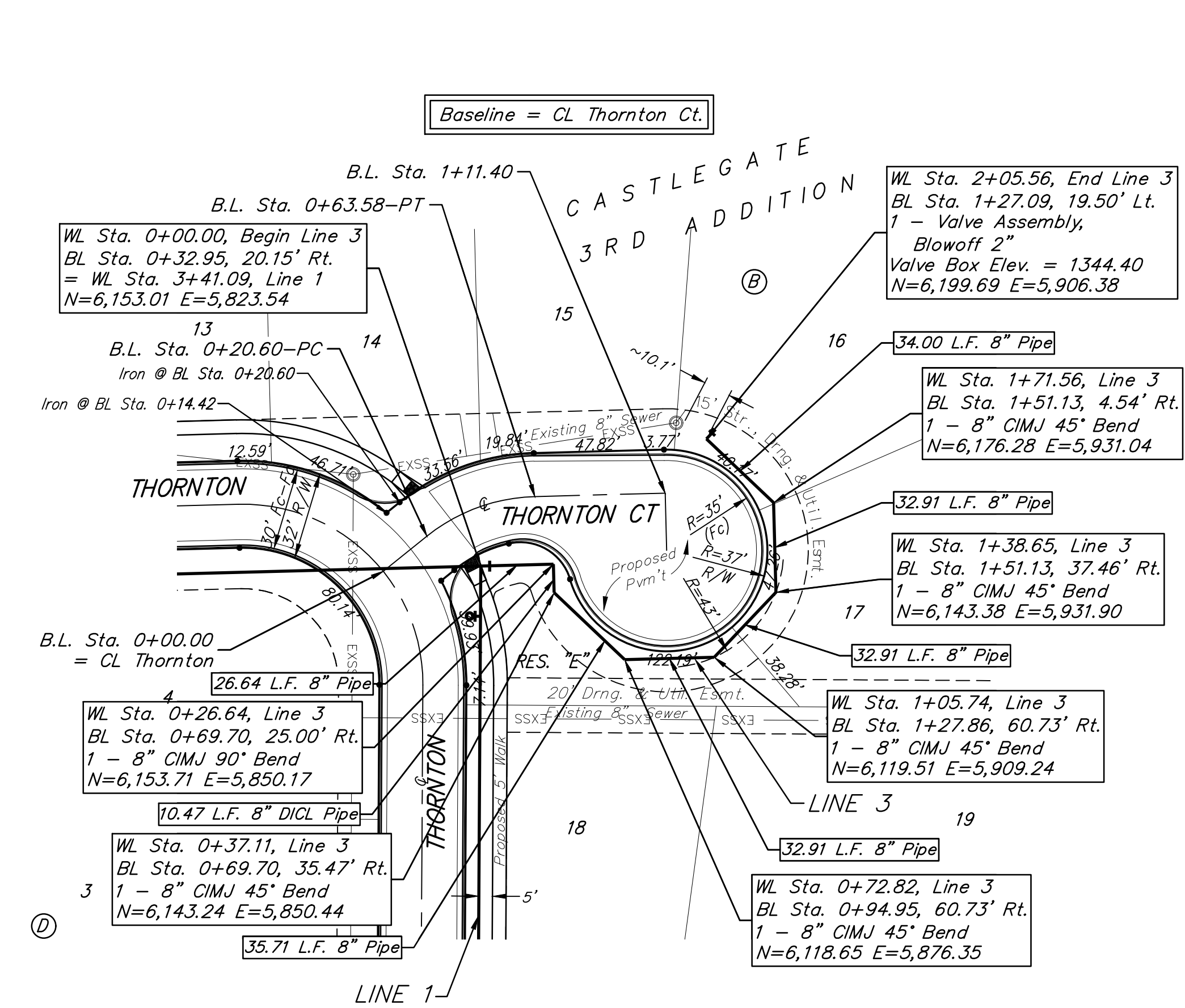
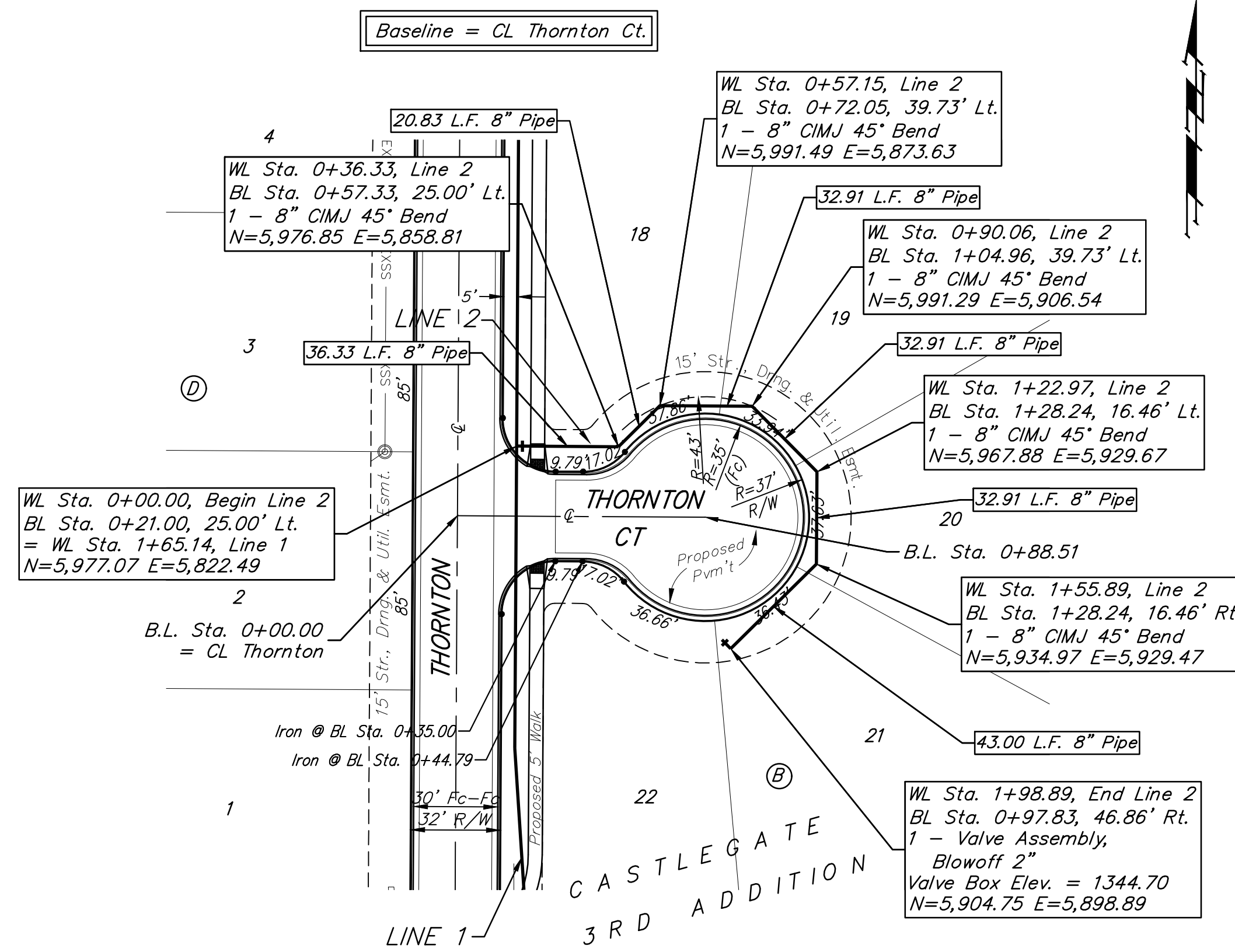


BENCHMARKS:

BM #1: Square cut/cross on curb inlet near the SE corner of Lot 1, Block D, Castlegate 3rd Addition.
Elev. = 1342.69 (NAVD88)

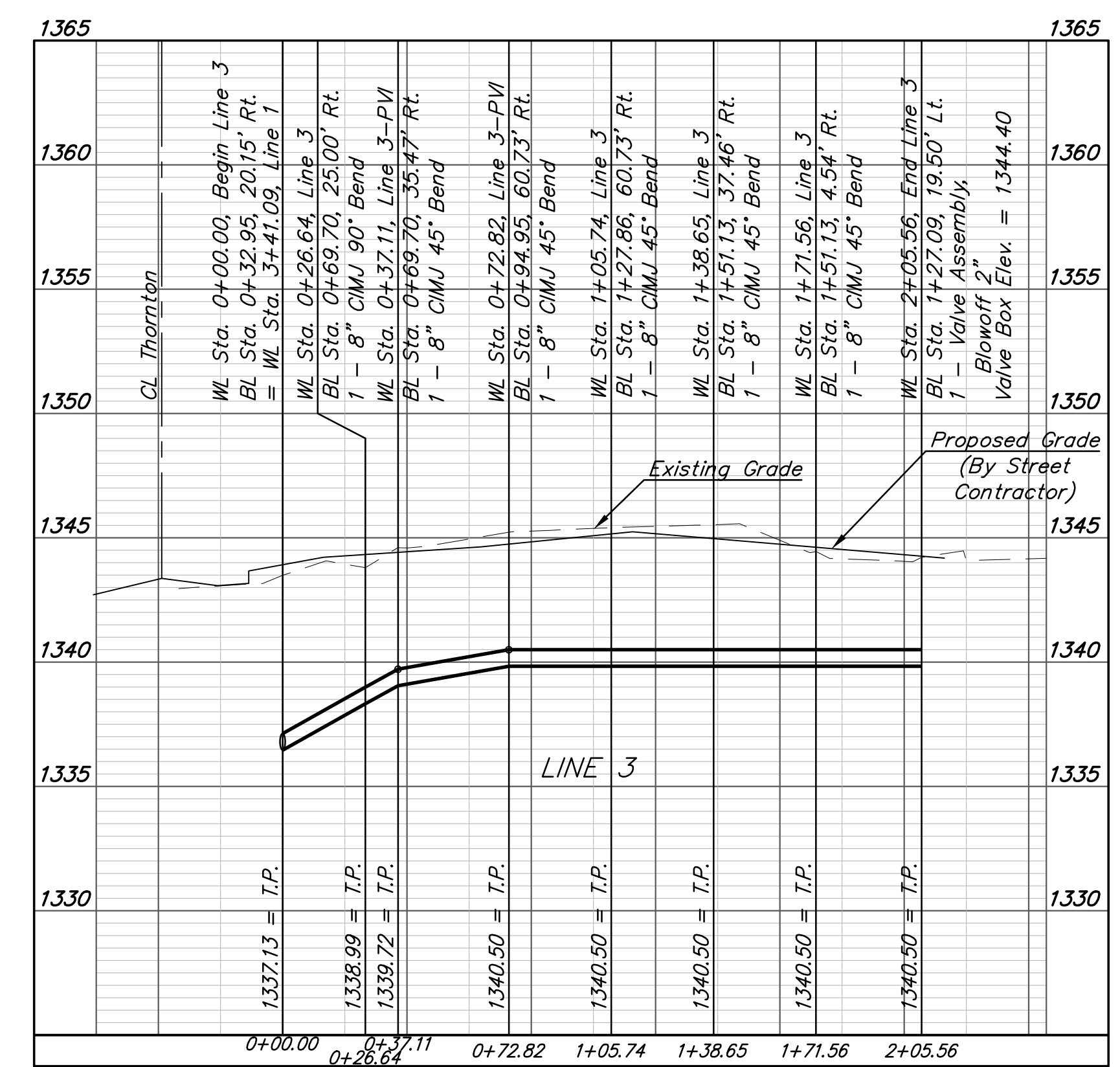
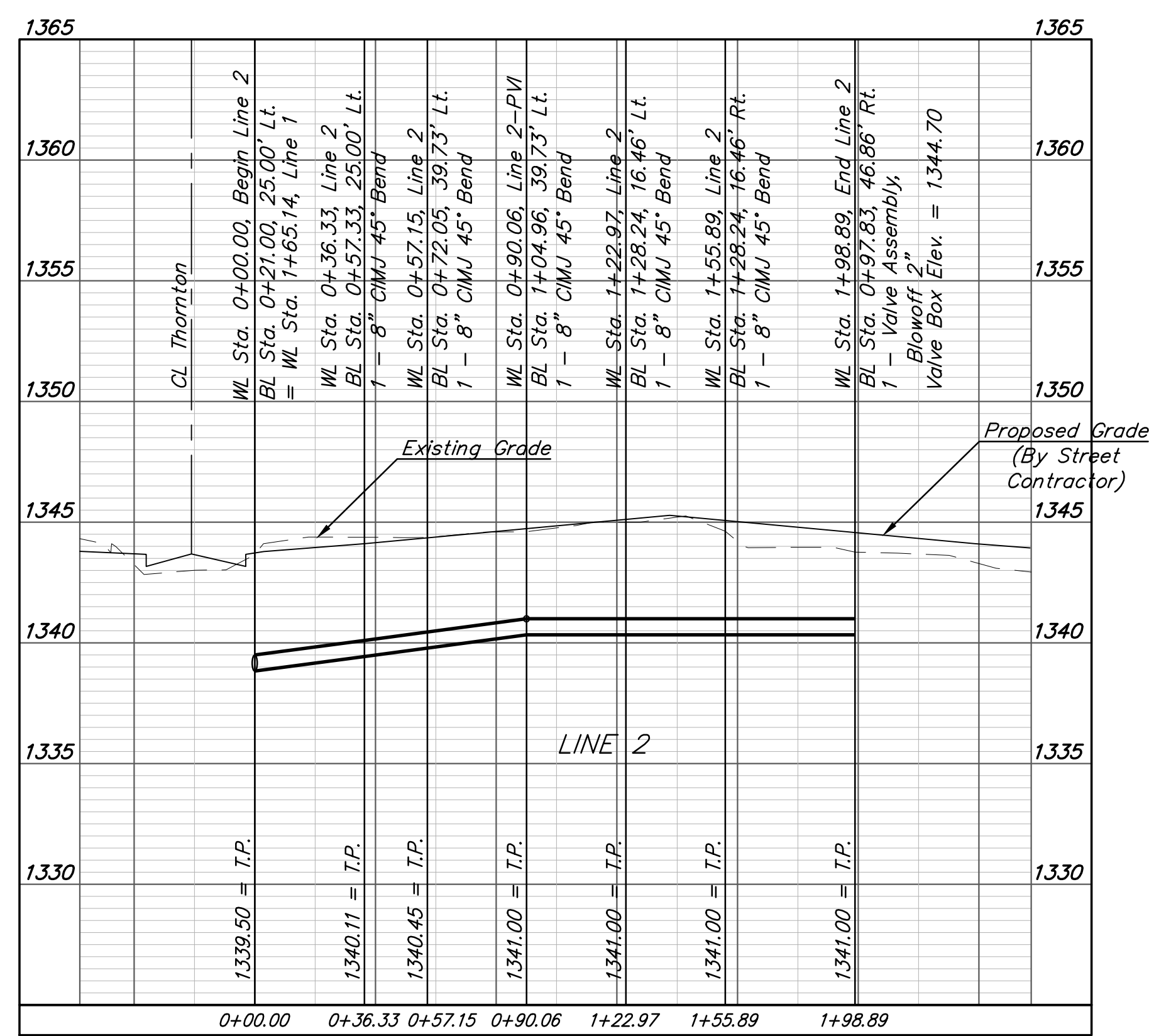
BM #2: Square cut/cross on curb inlet near the SW corner of Lot 11, Block B, Castlegate 3rd Addition.
Elev. = 1343.08 (NAVD88)



Pipe layout is shown with horizontal and vertical deflections. Contractor to use short pipe lengths, high deflection couplers, and manufacturer recommended pipe deflections to meet planned alignment.

Contractor to maintain a minimum of 10' of horizontal separation (O.D.-O.D.) between sanitary sewer and water line.

Contractor to maintain a minimum of 2' of vertical separation (O.D.-O.D.) between sanitary sewer and water line.



BAUGHMAN COMPANY

315 Ellis St.
Wichita, KS 67211
316-262-7271
BaughmanCo.com

CASTLEGATE 3RD ADD.
Phase 2

LINES 2 & 3

WATER DISTRIBUTION SYSTEM

PROJECT NUMBER:
22-08-E277

DESIGN: NBW DRAWN: TMS
DATE: May 16, 2023

SHEET OF
3 13

File: E:\Projects\Castlegate 3rd Addition_18-12-P-423\Engineering\Phase 2\Water 22-08-E277\Water.dwg