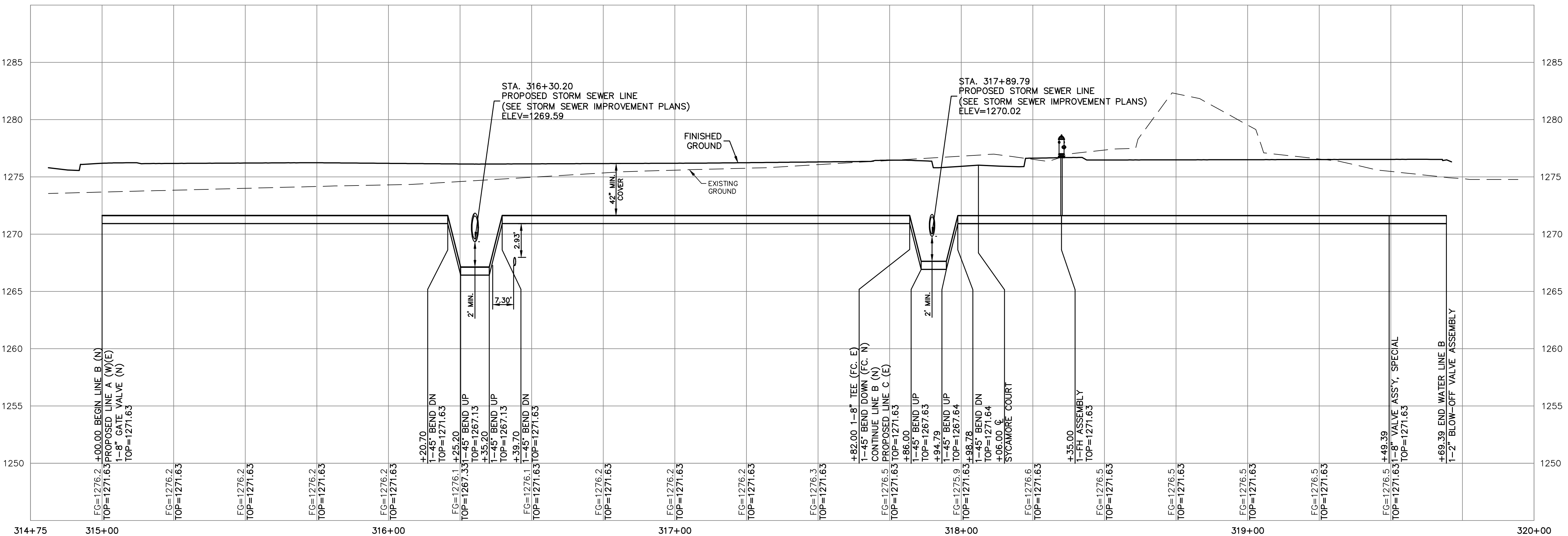
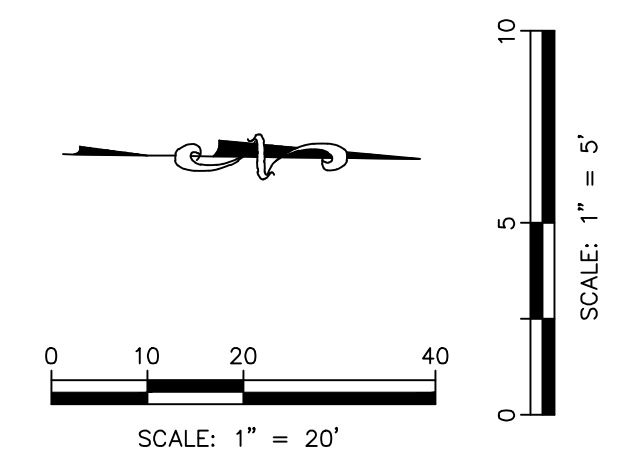
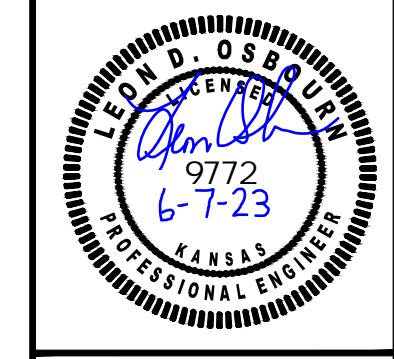


WATER LINE B



REV	DATE	DESCRIPTION
2	06/07/23	ADDENDUM UPDATE
1	05/16/23	ADDENDUM NO. 1
0	03/21/23	INITIAL RELEASE



LEON D. OSBOURN
ENGINEER
KS # 9772

KAW VALLEY ENGINEERING
KAW VALLEY ENGINEERING, INC. IS AUTHORIZED TO OFFER ENGINEERING SERVICES BY KANSAS STATE CERTIFICATE OF AUTHORIZATION # E-113. EXPIRES 12/31/24

SYCAMORE POND ADDITION
W 50TH STREET & SYCAMORE AVE
WICHITA, KANSAS

PHASE 3 - WATER IMPROVEMENTS
WL B - PLAN AND PROFILE

PROJ. NO.	G22 2295
DESIGNER	SRB
DRAWN BY	CC
CFN	2295WPP
SHEET	5
REV	2

THIS DRAWING SHALL NOT BE UTILIZED BY ANY PERSON, FIRM, OR CORPORATION IN WHOLE OR IN PART WITHOUT THE SPECIFIC PERMISSION OF KAW VALLEY ENGINEERING, INC.