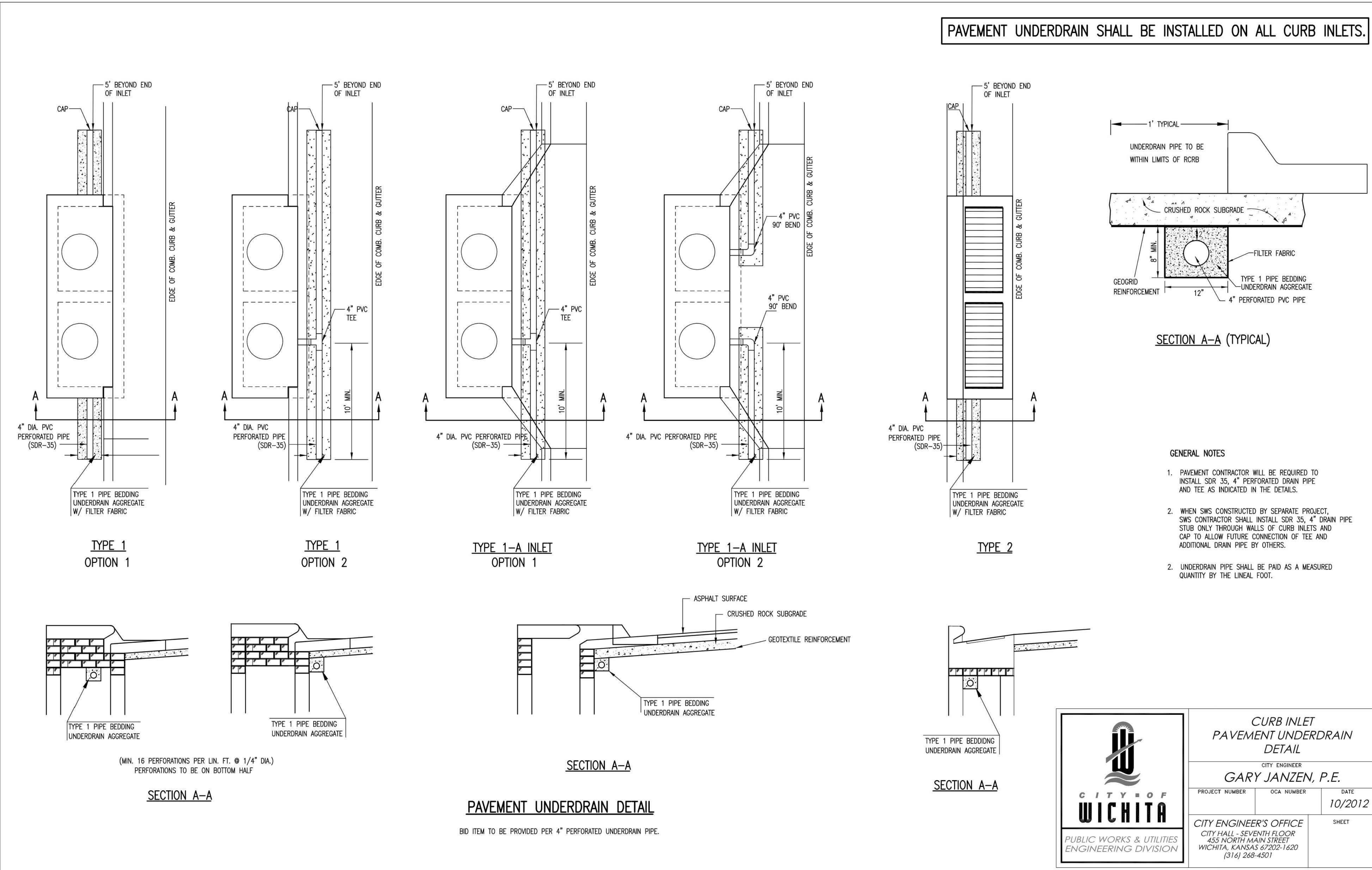


CS	CS
LDO	LDO
LDO	LDO
SRB	SRB
CC	CC
DSN	DSN
DWN	DWN
CHK	CHK

PAVEMENT UNDERDRAIN SHALL BE INSTALLED ON ALL CURB INLETS.



LEON D. OSBOURN
ENGINEER
KS # 9772

KAW VALLEY ENGINEERING
 200 N. EMPORIA, SUITE 100
 WICHITA, KANSAS 67202
 PH. (316) 440-4304
 www.kveeng.com | info@kveeng.com

KAW VALLEY ENGINEERING, INC., IS AUTHORIZED TO OFFER ENGINEERING SERVICES BY KANSAS STATE CERTIFICATE OF AUTHORIZATION # E-113. EXPIRES 12/31/24

SYCAMORE POND ADDITION
W 50TH STREET S & SYCAMORE AVE
WICHITA, KANSAS

PHASE 3-STORM SEWER IMPROVEMENTS
INLET UNDERDRAIN DETAIL



CITY ENGINEER GARY JANZEN, P.E.		
PROJECT NUMBER	OCA NUMBER	DATE
		10/2012
CITY ENGINEER'S OFFICE CITY HALL - SEVENTH FLOOR 455 NORTH MAIN STREET WICHITA, KANSAS 67202-1620 (316) 268-4501		SHEET

PROJ. NO.	G22 2295
DESIGNER	SRB
DRAWN BY	CC
CFN	2295DDDET
SHEET	22
REV	2