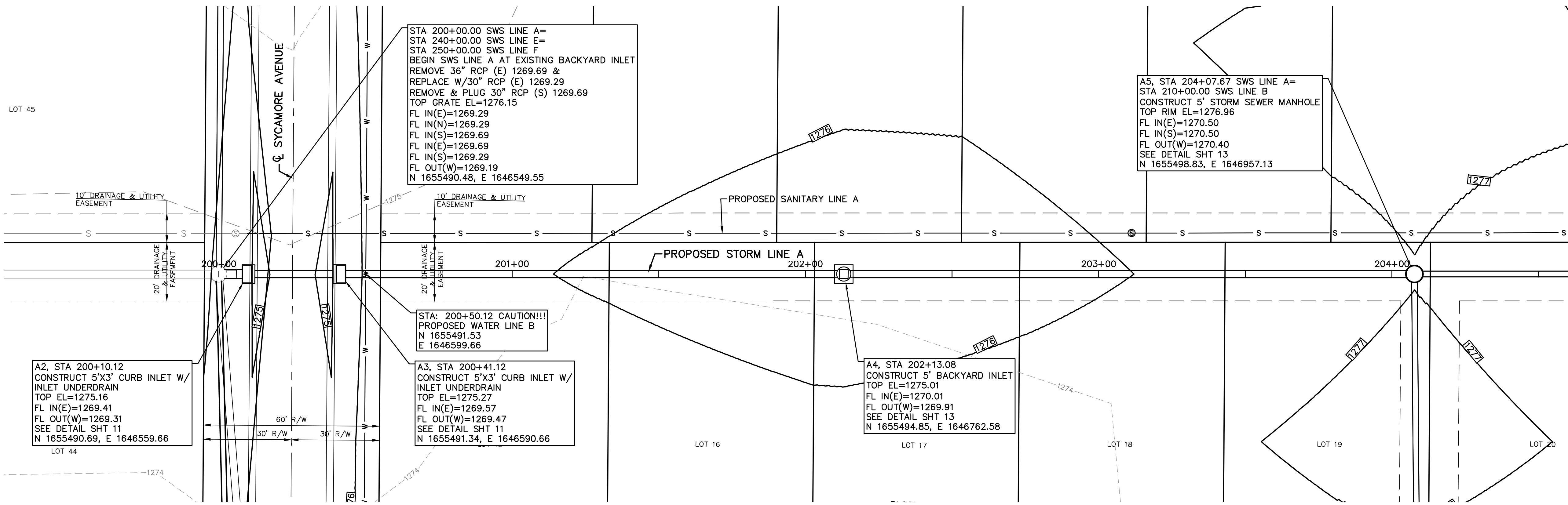


LOT 45



A2, STA 200+10.12  
CONSTRUCT 5'X3' CURB INLET W/  
INLET UNDERDRAIN  
TOP EL=1275.16  
FL IN(E)=1269.41  
FL OUT(W)=1269.31  
SEE DETAIL SHT 11  
N 1655490.69, E 1646559.66

STA 200+00.00 SWS LINE A=  
STA 240+00.00 SWS LINE E=  
STA 250+00.00 SWS LINE F  
BEGIN SWS LINE A AT EXISTING BACKYARD INLET  
REMOVE 36" RCP (E) 1269.69 &  
REPLACE W/30" RCP (E) 1269.29  
REMOVE & PLUG 30" RCP (S) 1269.69  
TOP GRATE EL=1276.15  
FL IN(E)=1269.29  
FL IN(N)=1269.29  
FL IN(S)=1269.69  
FL IN(E)=1269.69  
FL IN(S)=1269.29  
FL OUT(W)=1269.19  
N 1655490.48, E 1646549.55

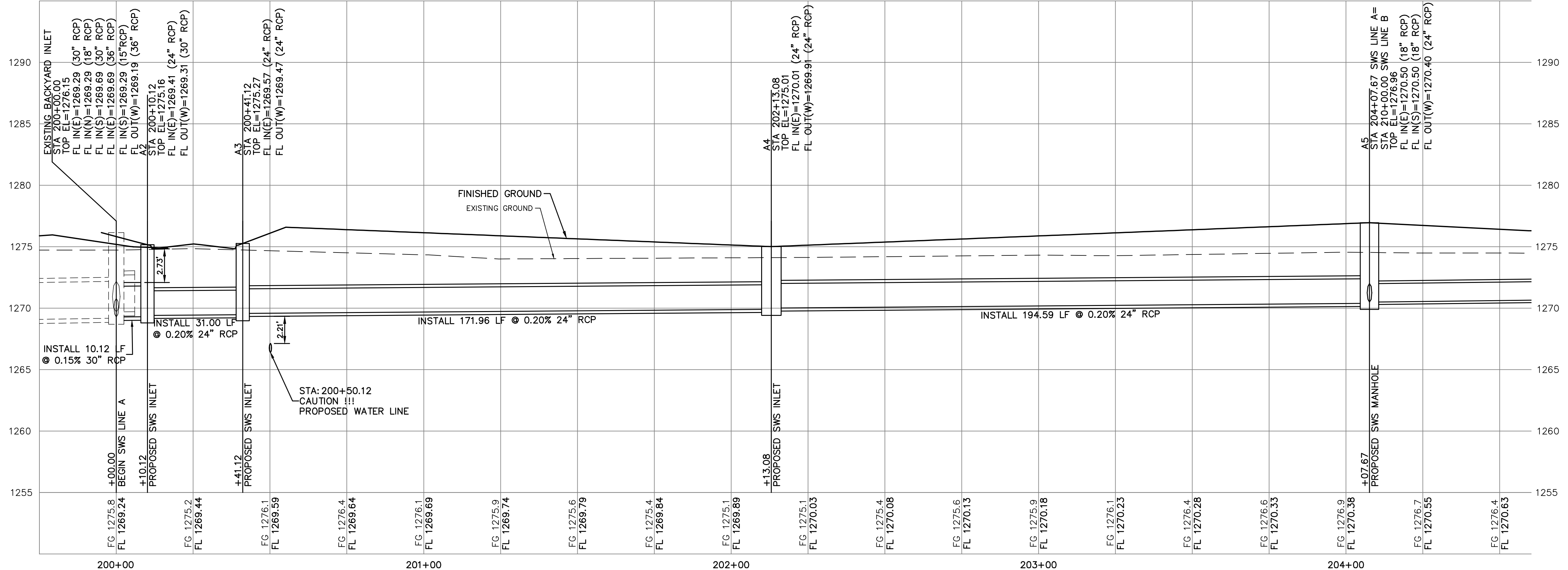
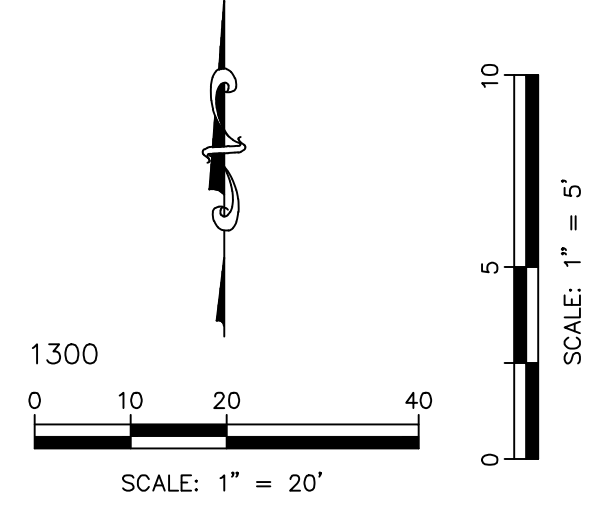
STA: 200+50.12 CAUTION!!!  
PROPOSED WATER LINE B  
N 1655491.53  
E 1646599.66

A3, STA 200+41.12  
CONSTRUCT 5'X3' CURB INLET W/  
INLET UNDERDRAIN  
TOP EL=1275.27  
FL IN(E)=1269.57  
FL OUT(W)=1269.47  
SEE DETAIL SHT 11  
N 1655491.34, E 1646590.66

A4, STA 202+13.08  
CONSTRUCT 5' BACKYARD INLET  
TOP EL=1275.01  
FL IN(E)=1270.01  
FL OUT(W)=1269.91  
SEE DETAIL SHT 13  
N 1655494.85, E 1646762.58

A5, STA 204+07.67 SWS LINE A=  
STA 210+00.00 SWS LINE B  
CONSTRUCT 5' STORM SEWER MANHOLE  
TOP RIM EL=1276.96  
FL IN(E)=1270.50  
FL IN(S)=1270.50  
FL OUT(W)=1270.40  
SEE DETAIL SHT 13  
N 1655498.83, E 1646957.13

STORM WATER SEWER LINE A



CS	DSN	CHK
LDO	LDO	JML
LDO	SRB	CC
ADDENDUM UPDATE	ADDENDUM NO. 1	INITIAL RELEASE
06/07/23	05/16/23	03/21/23
2	1	0
REV	DATE	DESCRIPTION

LEON D. OSBOURN  
ENGINEER  
KS # 9772

**KAW VALLEY ENGINEERING**  
KAW VALLEY ENGINEERING, INC. IS AUTHORIZED TO OFFER ENGINEERING SERVICES BY KANSAS STATE CERTIFICATE OF AUTHORIZATION # E-113. EXPIRES 12/31/24

**SYCAMORE POND ADDITION**  
W 50TH STREET S & SYCAMORE AVE  
WICHITA, KANSAS

**PHASE 3-STORM SEWER IMPROVEMENTS**  
LINE A - PLAN AND PROFILE

PROJ. NO.	G22-2295
DESIGNER	SRB
DRAWN BY	CC
CFN	2295DPP
SHEET	3
REV	2

THIS DRAWING SHALL NOT BE UTILIZED BY ANY PERSON, FIRM, OR CORPORATION IN WHOLE OR IN PART WITHOUT THE SPECIFIC PERMISSION OF KAW VALLEY ENGINEERING, INC.