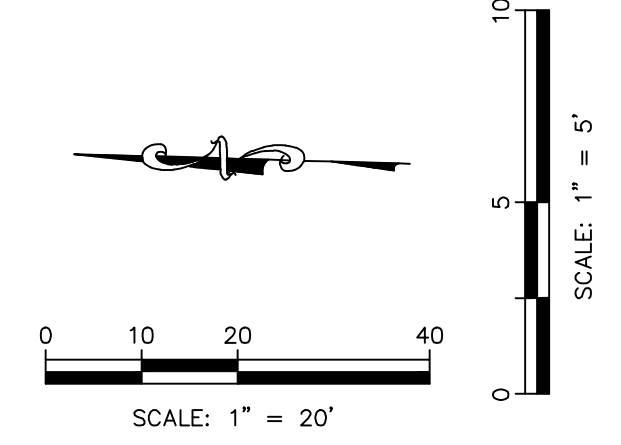
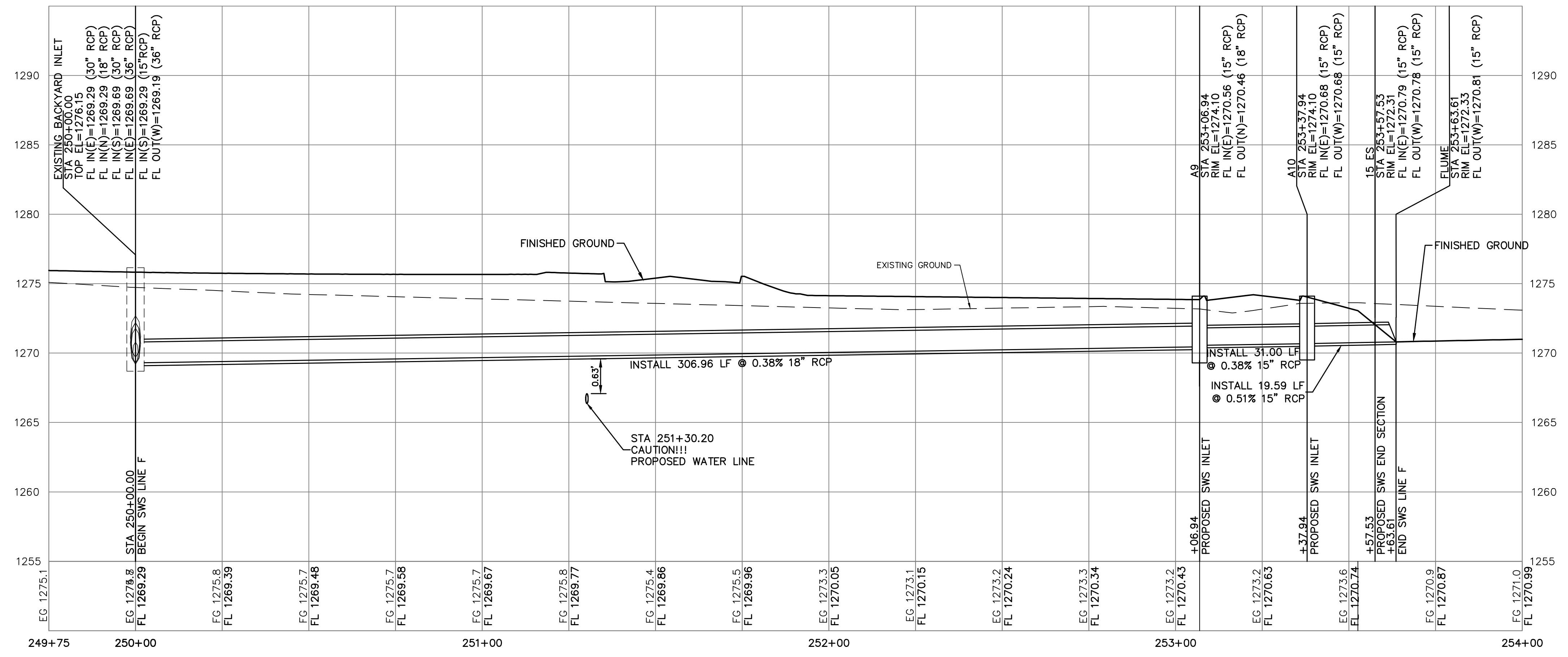


STORM WATER SEWER LINE F



| | |
|---|------------------------|
| | |
| LEON D. OSBOURN ENGINEER KS # 9772 | |
| | |
| KAW VALLEY ENGINEERING 200 N. EMPORIA, SUITE 100 WICHITA, KANSAS 67202 PH. (316) 440-4304 wh@kveeng.com www.kveeng.com | |
| KAW VALLEY ENGINEERING, INC. IS AUTHORIZED TO OFFER ENGINEERING SERVICES BY KANSAS STATE CERTIFICATE OF AUTHORIZATION # E-113. EXPIRES 12/31/24 | |
| SYCAMORE POND ADDITION W 50TH STREET S & SYCAMORE AVE WICHITA, KANSAS | |
| PHASE 3-STORM SEWER IMPROVEMENTS LINE F PLAN AND PROFILE | |
| PROJ. NO. G22 2295 | DESIGNER SRB |
| CFN 2295DPP | DRAWN BY CC |
| SHEET 9 | REV 2 |

THIS DRAWING SHALL NOT BE UTILIZED BY ANY PERSON, FIRM, OR CORPORATION IN WHOLE OR IN PART WITHOUT THE SPECIFIC PERMISSION OF KAW VALLEY ENGINEERING, INC.