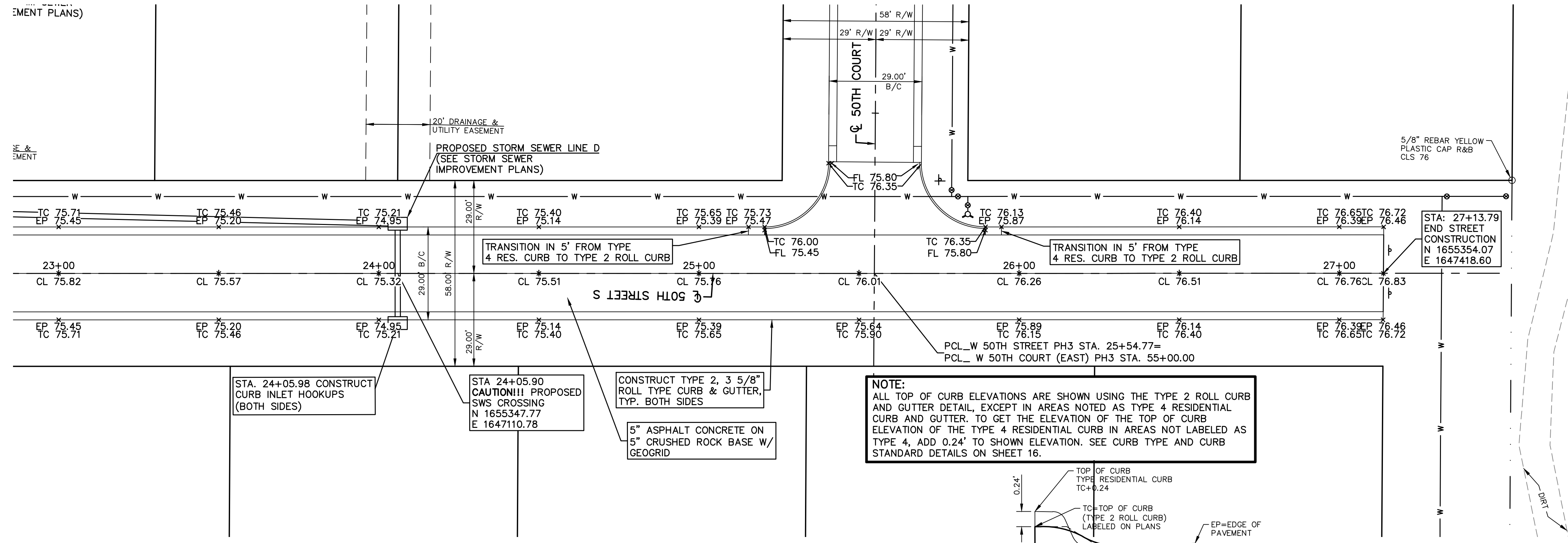
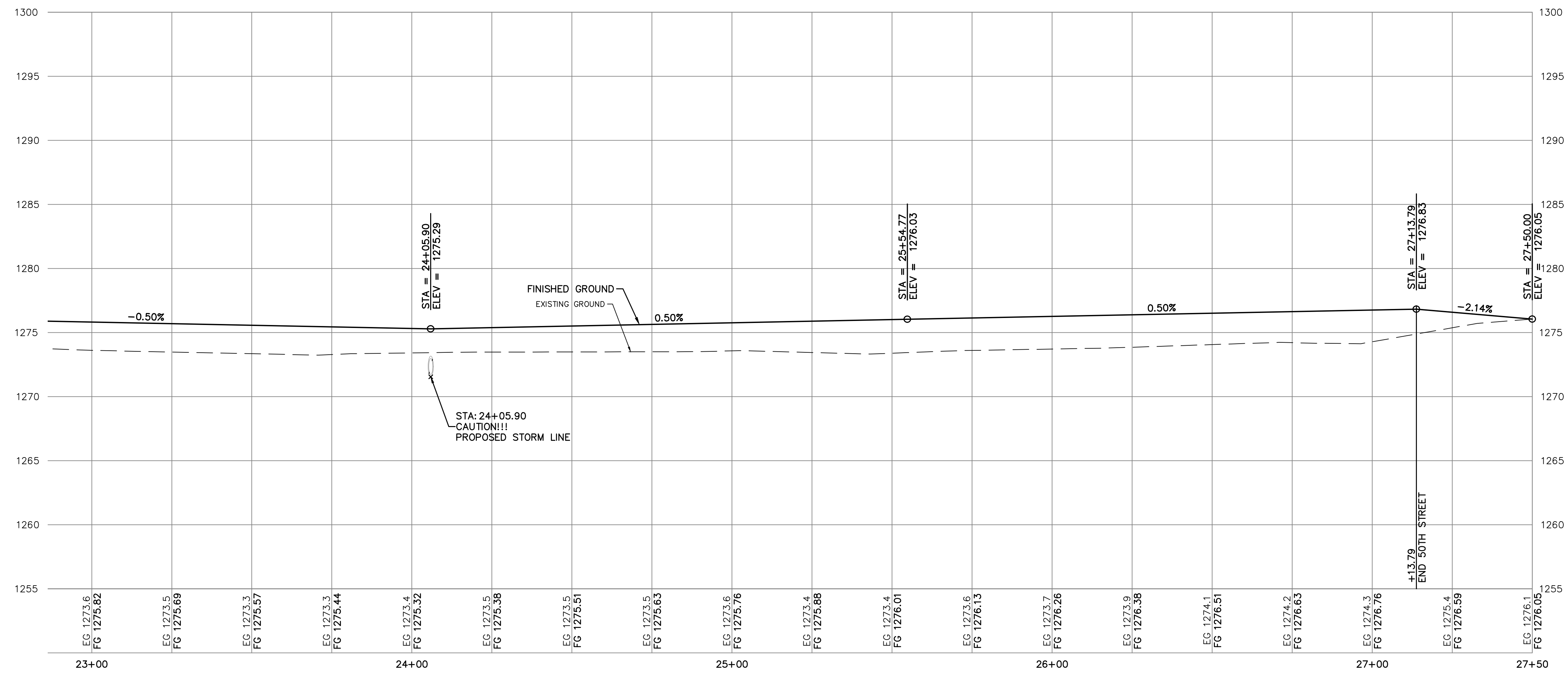
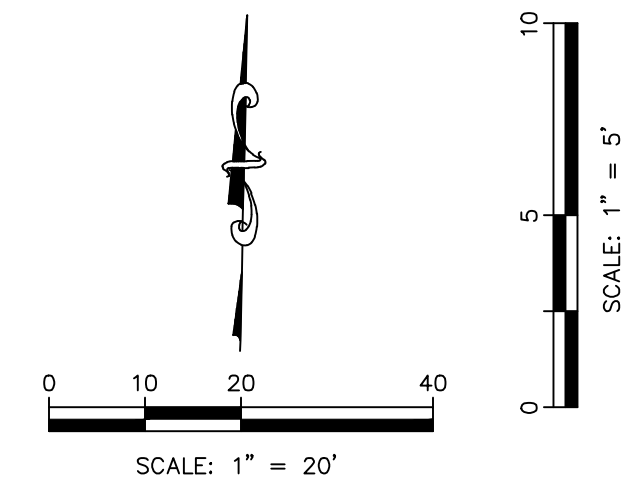
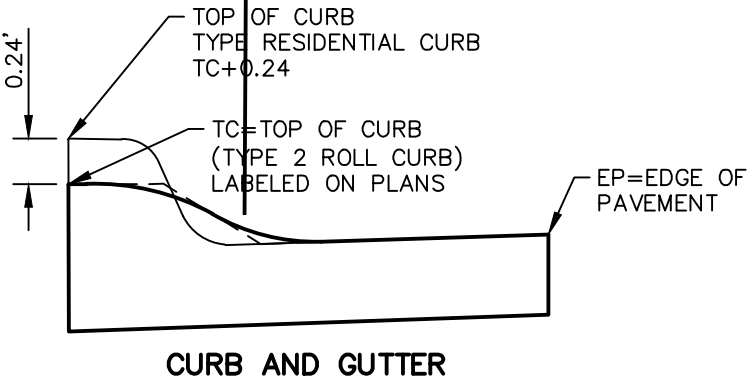


MENT PLANS)

RE & EMENT



W 50TH STREET S



CS	CS	DSN	CHK
LDO	LDO	LDO	JML
LDO	SRB	SRB	CC
2	06/07/23	ADDENDUM UPDATE	
1	05/16/23	ADDENDUM NO. 1	
0	03/21/23	INITIAL ISSUE	
REV	DATE	DESCRIPTION	

LEON D. OSBOURN ENGINEER KS # 9772
<p>KAW VALLEY ENGINEERING</p> <p>200 N. EMPORIA, SUITE 100 WICHITA, KANSAS 67202 PH. (316) 440-4304 wh@kveeng.com www.kveeng.com</p> <p>KAW VALLEY ENGINEERING, INC. IS AUTHORIZED TO OFFER ENGINEERING SERVICES BY KANSAS STATE CERTIFICATE OF AUTHORIZATION # E-113. EXPIRES 12/31/24</p>
<p>SYCAMORE POND ADDITION W 50TH STREET S & SYCAMORE AVE WICHITA, KANSAS</p> <p>PHASE 3 - PAVEMENT IMPROVEMENTS W. 50TH STREET S. - PLAN & PROFILE</p>
<p>PROJ. NO. G22 2295</p> <p>DESIGNER SRB DRAWN BY CC</p> <p>CFN 2295STPP</p> <p>SHEET 5 REV 2</p>