

GENERAL NOTES

- THE CONTRACTOR SHALL COMPLY WITH ALL APPLICABLE SAFETY REGULATIONS. ALL CONSTRUCTION SHALL BE COMPLETED FOLLOWING CURRENT CITY STANDARD SPECIFICATIONS AND SPECIAL PROVISIONS.
- CONTRACTOR WILL BE REQUIRED TO PROVIDE NOTICE TO UTILITY COMPANIES A MINIMUM OF SEVENTY-TWO (72) HOURS PRIOR TO ANY EXCAVATION, AS FOLLOWS:

KANSAS ONE-CALL 687-2470

THE CONTRACTOR MUST NOTIFY THE FOLLOWING IN CASE OF AN EMERGENCY:

TEXTRON AVIATION
 EAST CAMPUS EMERGENCY 1-316-515-6911
 EAST CAMPUS NON-EMERGENCY (SECURITY DISPATCH) 1-316-515-5300
 AT&T 1-800-246-8464
 BLACK HILLS ENERGY 1-800-694-8989
 CITY OF WICHITA WATER & SEWER 1-316-219-8921
 CITY OF WICHITA STORMWATER 1-316-268-4090
 CITY OF WICHITA TRAFFIC 1-316-268-4034
 COX COMMUNICATIONS 1-888-249-3530
 KANSAS GAS SERVICE 1-888-482-4950
 EVERGY 1-800-544-4857

- UTILITY SERVICE LINES, POLES, ETC. ARE TO BE ADJUSTED AS NECESSARY BY OTHERS PRIOR TO CONSTRUCTION UNLESS THE PLANS SPECIFICALLY CALL FOR THEIR ADJUSTMENT BY THE CONTRACTOR OR UNLESS THE PLANS SPECIFICALLY IDENTIFY A UTILITY TO BE ADJUSTED BY ITS OWNER DURING CONSTRUCTION. EXISTING UTILITIES AND THEIR LOCATION, AS SHOWN ON THE PLANS, REPRESENT THE BEST INFORMATION OBTAINABLE FOR DESIGN. THE CONTRACTOR WILL BE REQUIRED TO WORK AROUND EXISTING UTILITIES WITHIN THE RIGHT-OF-WAY WHICH DO NOT CONFLICT WITH PROPOSED CONSTRUCTION.

- RUBBLE FROM THE REMOVAL OF MISCELLANEOUS STRUCTURES AND EXCESS EXCAVATION WHICH IS TO BE WASTED SHALL BE DISPOSED OF ON SITES TO BE PROVIDED BY THE CONTRACTOR. THESE SITES SHALL BE APPROVED BY THE ENGINEER AS TO SUITABILITY, APPEARANCE AND SITE LOCATION. LOCATIONS, IN THE OPINION OF THE ENGINEER, THAT WILL LEAVE AN UNSIGHTLY APPEARANCE WILL NOT BE APPROVED. ALL DISPOSAL SITES MUST BE APPROVED BY THE KANSAS DEPARTMENT OF HEALTH AND ENVIRONMENT. MATERIAL EITHER STOCKPILED OR DISPOSED OF IN A FLOOD PLAIN WILL REQUIRE A KANSAS STATE BOARD OF AGRICULTURE PERMIT. ANY MATERIAL DUMPED IN WATERS OF THE UNITED STATES OR WETLANDS IS SUBJECT TO U.S. CORPS. OF ENGINEERS PERMITTING REGULATIONS. ANY MATERIAL BURIED OR STOCKPILED BEYOND APPROVED CONSTRUCTION LIMITS WILL REQUIRE ADDITIONAL ARCHAEOLOGICAL INVESTIGATIONS UNLESS BURIED IN A PREVIOUSLY APPROVED BORROW LOCATION.

- TREES AND SHRUBS IN PUBLIC RIGHT-OF-WAY WHICH ARE IN DIRECT CONFLICT WITH PROPOSED NEW CONSTRUCTION SHALL BE REMOVED BY THE CONTRACTOR WITH THE CITY ENGINEER'S APPROVAL. TREES AND SHRUBS WHICH ARE NOT IN DIRECT CONFLICT WITH PROPOSED NEW CONSTRUCTION SHALL BE SAVED AND PROTECTED FROM DAMAGE.

- THE CONTRACTOR SHALL GIVE ALL PROPERTY OWNERS AND/OR TENANTS OF DEVELOPED PROPERTY ABUTTING THE CONSTRUCTION OF THIS PROJECT A MINIMUM OF TEN (10) DAYS NOTICE PRIOR TO START OF CONSTRUCTION.

- THE CONTRACTOR SHALL BE RESPONSIBLE FOR PRESERVING PROPERTY IRONS. THE CONTRACTOR WILL BE REQUIRED TO RE-ESTABLISH ANY PROPERTY IRONS WHICH ARE DAMAGED OR DESTROYED BY HIS CONSTRUCTION OPERATIONS. SUCH IRONS SHALL BE RE-ESTABLISHED BY A LICENSED LAND SURVEYOR IN ACCORDANCE WITH STATE LAWS.

- THE ENGINEERING DIVISION SHALL FIELD LOCATE WATER VALVES ONE TIME DURING CONSTRUCTION WHEN REQUESTED BY THE CONTRACTOR. IT SHALL BE THE CONTRACTOR'S RESPONSIBILITY TO PRESERVE SUCH FIELD LOCATIONS DURING THE CONSTRUCTION PROCESS. WATER VALVES, VALVE BOXES OR FIRE HYDRANTS DAMAGED DURING CONSTRUCTION SHALL BE REPAIRED BY CONTRACTOR AT HIS OWN EXPENSE. VALVE BOXES AND WATER METERS WITHIN THE PROJECT LIMITS SHALL BE ADJUSTED TO MATCH FINAL GRADES BY THE CONTRACTOR.

- THE CONTRACTOR SHALL NOTIFY THE INSPECTING ENGINEER AND DAWNITA REINHARDT AT 316-650-0740 WITH THE CITY OF WICHITA WITH THE ANTICIPATED CONSTRUCTION START DATE AND NOTIFY THEM OF PROJECT COMPLETION. STAKING AND INSPECTION FOR THIS PROJECT WILL BE THE RESPONSIBILITY OF THE CONTRACTOR.

- IF TRAFFIC WILL BE IMPACTED BY CONSTRUCTION, A TRAFFIC CONTROL PLAN MUST BE SUBMITTED AND APPROVED BY THE CITY TRAFFIC ENGINEER, MIKE ARMOUR AT TRAFFIC@WICHITA.GOV BEFORE CONSTRUCTION CAN BEGIN. THE CONTRACTOR SHALL BE RESPONSIBLE FOR ALL TRAFFIC CONTROL MEASURES TO FACILITATE CONSTRUCTION. ALL CONSTRUCTION ZONE MARKINGS AND SIGNAGE SHALL CONFORM TO THE LATEST VERSION OF THE MANUAL ON UNIFORM TRAFFIC CONTROL DEVICES (MUTCD) AS PUBLISHED BY THE US DEPT. OF TRANSPORTATION, FEDERAL HIGHWAY ADMINISTRATION. ALL COSTS ASSOCIATED WITH CONSTRUCTION MARKINGS AND SIGNAGE SHALL BE THE CONTRACTOR'S RESPONSIBILITY.

- ALL ELEVATIONS SHOWN ARE NAVD 88.

- ALL AREAS DISTURBED DURING CONSTRUCTION THAT WILL NOT BE UNDER PROPOSED PAVEMENT SHALL BE RESTORED TO MATCH EXISTING CONDITIONS.

- ANY SIDEWALK, DRIVE APPROACH, CURB, OR STREET PAVEMENT REMOVED TO CONSTRUCT PROJECT MUST HAVE A PAVEMENT CUT PERMIT AND BE REPLACED BY THE CITY CONTRACTOR. PERMITS CAN BE OBTAINED BY CALLING 316-268-4501 OR 316-268-4480.

- ALL APPLICABLE FEES (TAP, EQUITY, IN LIEU OF & MAIN BENEFIT) MUST BE PAID BEFORE ANY CONNECTIONS CAN BE MADE ON THIS PROJECT. QUOTES CAN BE OBTAINED ON FEES BY CALLING 316-268-4555.

- CITY MAINTENANCE OF SANITARY SEWER MAINS ENDS AT LAST STRUCTURE WITHIN THE EASEMENT OR RIGHT-OF-WAY.

- ALL STUBS AND CAPPED PIPES SHALL BE LOCATED WITH GREEN PLASTIC TAPE IN THE SAME MANNER AS RISERS.
- CONNECTING TO EXISTING MANHOLES: PRIOR TO LAYING SEWER LINES USING EXISTING STUBS IN EXISTING MANHOLES, THE CONTRACTOR SHALL EXPOSE AND VERIFY THE ELEVATION, GRADE AND ALIGNMENT OF EXISTING STUBS AND NOTIFY THE ENGINEER OF ANY DEVIATION FROM THE PLANS. WHERE THE STUB IS UNUSABLE DUE TO ELEVATION GRADE OR ALIGNMENT, THE CONTRACTOR SHALL REMOVE THE STUB AND PLUG THE HOLE, AND RESHAPE THE EXISTING MANHOLE INVERT TO PROVIDE SMOOTH FLOW. WHERE CONNECTING TO AN EXISTING MANHOLE THAT DOES NOT HAVE AN EXISTING STUB, THE CONTRACTOR SHALL CORE CUT INTO EXISTING MANHOLE WALL TO MAKE CONNECTION USING APPROVED WATER STOP GASKET, AND RESHAPE THE EXISTING MANHOLE INVERT TO PROVIDE SMOOTH FLOW. THE COST TO CONNECTING TO EXISTING MANHOLES IS INCIDENTAL TO THE PROJECT.

- CONTRACTOR SHALL LIMIT THE EXTENT OF TRENCH OPEN OVERNIGHT AND WEEKENDS TO LESS THAN 50 FEET.

- CONTRACTOR SHALL PROVIDE POSITIVE DRAINAGE AWAY FROM ALL MANHOLE COVERS.

- THE CONTRACTOR SHALL PREVENT ANY CONSTRUCTION DEBRIS FROM ENTERING THE EXISTING SANITARY SEWER DURING CONSTRUCTION.
- THE CONTRACTOR SHALL BE RESPONSIBLE FOR MAINTAINING CONTINUOUS FLOW OF SEWAGE THROUGH CONSTRUCTION. CONTRACTORS PROPOSED METHOD FOR MAINTAINING SEWAGE FLOW SHALL BE SUBMITTED AND APPROVED BY THE SEWER MAINTENANCE DIVISION (316-268-4073) PRIOR TO STARTING AND BY-PASSING OF SEWAGE FLOWS.

- ANY OVER EXCAVATION FROM MANHOLE AND PIPE REMOVAL SHALL BE BACKFILLED WITH AB-3 COMPACTED TO 90-95% ASTM D698.

- THE CONTRACTOR SHALL PROTECT FROM DAMAGE AND SUPPORT EXISTING UTILITIES THROUGH CONSTRUCTION AS APPROVED BY THE UTILITY OWNER AND THE ENGINEER AT THE CONTRACTORS EXPENSE.

- THE CONTRACTOR SHALL INSTALL AND/OR MAINTAIN EROSION CONTROL METHODS AS SPECIFIED. THE GENERAL LOCATION OF THE REQUIRED EROSION CONTROL IS ILLUSTRATED ON THE EROSION CONTROL PLAN. THE CONTRACTOR SHALL BE RESPONSIBLE FOR MAINTAINING THE EROSION CONTROL SHOWN THROUGH THE COMPLETION OF THIS PROJECT. INSTALLATION OF THESE BMP'S DOES NOT RELIEVE THE CONTRACTOR OF THE RESPONSIBILITY OF ABATING SOIL EROSION.

BENCH MARKS

BM-201
 ELEV: 1,365.01 (NAVD 88)
 CHISELED SQUARE SOUTHWEST CORNER INLET SOUTH SIDE WEBB ROAD MAIN ENTRANCE EAST SIDE WEBB ROAD.

BM-20
 ELEV: 1,371.74 (NAVD 88)
 CHISELED SQUARE EAST SIDE MANHOLE ON CONCRETE PAD +/- 450' SOUTH OF WEBB ROAD MAIN ENTRANCE IN PARKING LOT

BM-203
 ELEV: 1,369.65 (NAVD 88)
 CHISELED SQUARE SOUTH CURB NORTH END PLANT 3 +/- 25' SOUTH OF FIRE HYDRANT "BFH 018"

BM-204
 ELEV: 1,381.57 (NAVD 88)
 CHISELED SQUARE CENTER OF CONCRETE ELCTRIC DUCT BANK "RED CONCRETE" NORTH OF SOUTH EDGE OF PAVEMENT

BM-205
 ELEV: 1,385.66 (NAVD 88)
 CHISELED SQUARE SE CORNER RETAINING WALL EAST SIDE BLDG 96

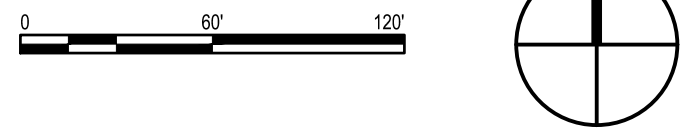
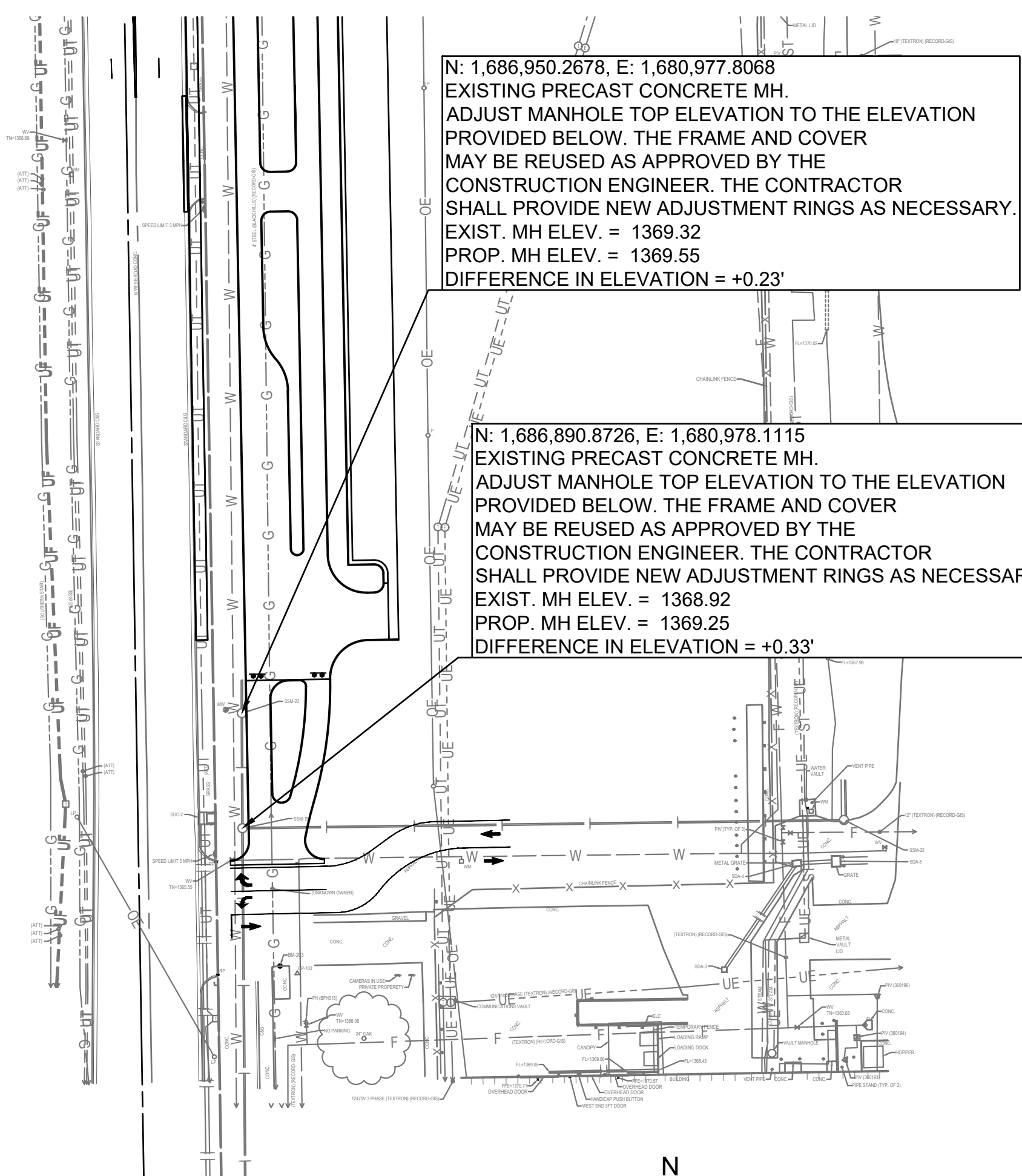
BM-206
 ELEV: 1,377.49 (NAVD 88)
 CHISELED SQUARE NW CORNER ELECTRIC BOX #W12F36099 NE OF PLANT 3 BLDG

AS BUILTS
 Contractor: McCullough Excavation
 Project Inspector: Larry Gann
 5/31/2023
KEMILLER ENGINEERING
 117 E. MAIN, WICHITA, KS 67202 (316)268-4500

D. Reinhardt - City of Wichita, Inspector
 Release date: 6/28/2023
 apr 7/3/2023

SANITARY SEWER to serve TEXTRON AVIATION EAST CAMPUS WEBB ROAD ENTRY CITY OF WICHITA, KANSAS

Gary Janzen, P.E. City Engineer
 Project Number
 2023-001419 PPS (54030982)



HORIZONTAL CONTROL POINTS

CP-101
 N: 1,688,046.6781 E: 1,680,953.8984
 CHISELED + ON MANHOLE PAD NORTH SIDE OF WEBB ROAD MAIN ENTRANCE EAST SIDE WEBB ROAD
 1. 17.4' W TO EAST CURB WEBB ROAD
 2. 31.67' SW TO NORTHEAST CORNER AREA INLET
 3. 2.84' SW TO CENTER MANHOLE

CP-102
 N: 1,687,441.7725 E: 1,680,952.9368
 #4 BAR WITH PEC CP CAP IN GRASS EAST SIDE WEBB ROAD
 1. 6.17' W TO EAST CURB WEBB ROAD
 2. 81.25' NNE TO CHISELED SQUARE ON EAST SIDE MANHOLE PAD
 3. 118.5' E TO MAG NAIL IN SOUTH FACE LIGHT POLE

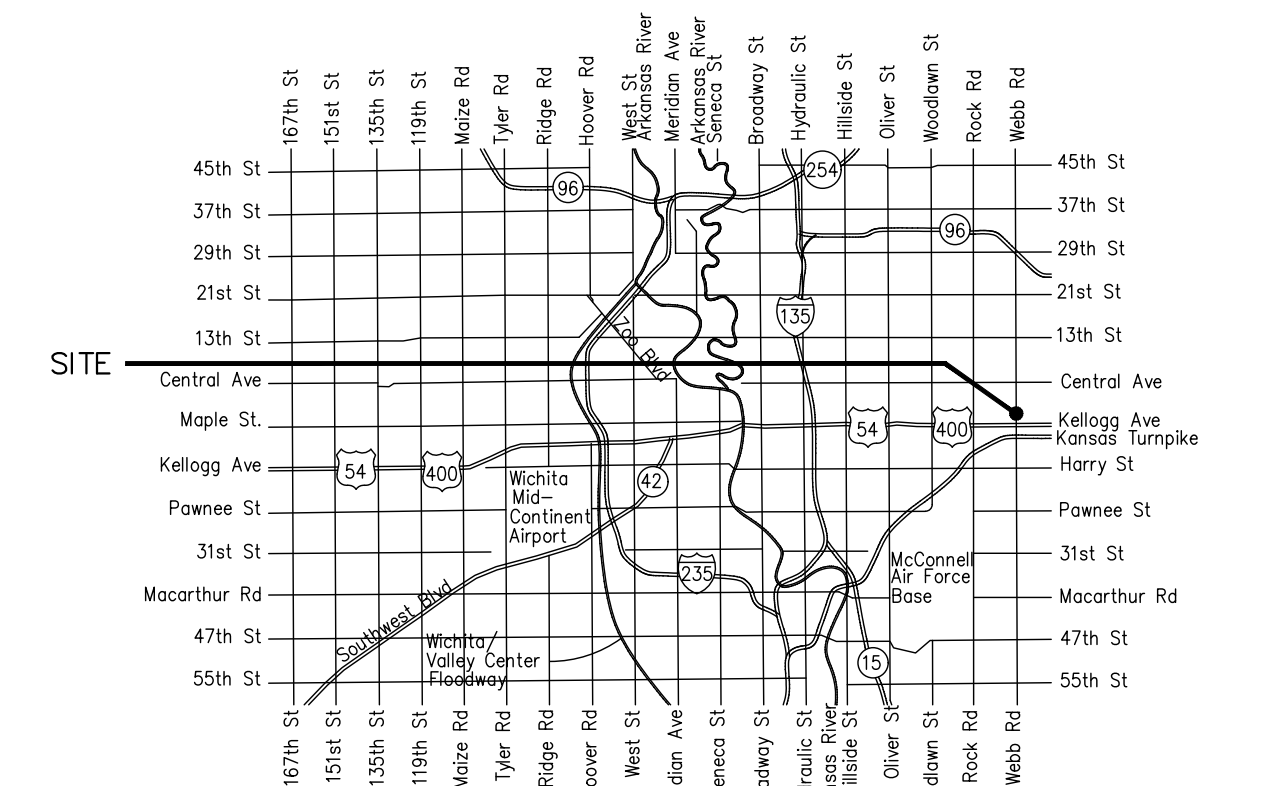
CP-103
 N: 1,686,815.9874 E: 1,681,006.4280
 #4 BAR W/PEC CP CAP SOUTH SIDE NORTH ENTRANCE PLANT 3
 1. 9.67' WNW TO TO CHISELED SQUARE
 2. 25' SSW TO TOP CENTER FIRE HYDRANT "BFH 018"
 3. 4' N TO SOUTH EDGE CONCRETE DRIVE

CP-104
 N: 1,687,638.7254 E: 1,682,559.0478
 MAG NAIL IN ASPHALT EAST OF ELECTRIC DUCT BANK EAST OF TAXIWAY
 1. 4.44 W TO CHISELED SQUARE IN ELECTRIC DUCT BANK "RED CONCRETE"
 2. 30.47 SW TO SIGN "NO DUMPING OR STORAGE"
 3. 88.37 ESE TO WEST END SIGN "WARNING AIRCRAFT TAXIWAY"

CP-105
 N: 1,687,526.8456 E: 1,682,142.5539
 MAG NAIL SW CORNER PAVED AREA SOUTHEAST OF BLDG 96
 1. 12.1 SW TO CENTER OF ELECTRIC MH
 2. 114.1 NNW TO CHISELED SQUARE SE CORNER RETAINING WALL
 3. 76.62 WNW TO SOUTHEAST CORNER BLDG 96

CP-106
 N: 1,686,991.4139 E: 1,682,000.2159
 #4 BAR W/PEC CP CAP IN GRASS NE OF PLANT 3 BLDG.
 1. 59.33 S TO NW CORNER CONCRETE PAD FOR ELECTRIC BOX #W012G90776
 2. 97.05 SSW TO CHISELED SQUARE NW CORNER PAD ELECTRIC BOX #W12F36099
 3. 81.93 WNW TO SE CORNER PAD FOR TRANSFORMER #TS748397

MABCD REVIEWER:



Vicinity Map

SHEET INDEX

SHEET NO.	TITLE SHEET
CU300	MANHOLE ADJUSTMENT DETAIL
CU301	EROSION CONTROL BMP DETAILS
CG501-505	(attached or available on the City's website)

APPROVED AS NOTED
 BY WICHITA PUBLIC WORKS
 ENGINEERING DIVISION

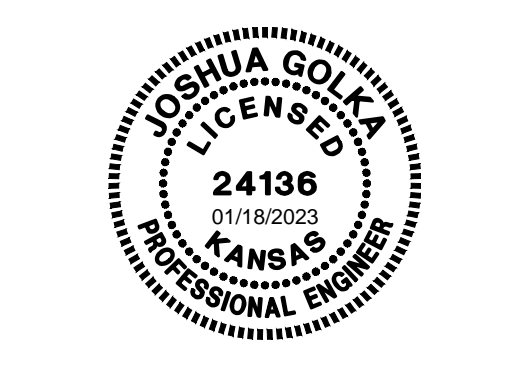
Engineering SHAWN MELLIES 01/17/2023
 Utilities DEB ARY 01/17/2023

NOTE TO CONTRACTORS

Inspection and testing for this project is to be provided by a Licensed Consulting Engineering Firm under contract with the Owner/Developer. Said inspection to be in accordance with the City of Wichita standard construction engineering practices and certified by a Licensed Professional Engineer in the state of Kansas. No work shall be performed by the Contractor without such inspection nor shall any work be commenced without written authorization by City Engineering. All Construction and Materials shall comply with the current City of Wichita Specifications and Standards and Special Provisions. (on file and available at Wichita.gov).

An approved copy of these plans signed by City staff are required on-site.

JANUARY 2023



Date	Description
6 01/17/2023	ASI - 006



JOB NUMBER:	228003-044
DATE:	08/17/2022
DRAWN:	NCL
CHECKED:	JAG

PPS COVER SHEET

CU300
 EAST CAMPUS

Save: 01-16-2023 8:24:33 AM by SAMANTHA WEBB
 Plot Scale: 1/2"=8'-0" 01-17-2023 1:53:10 PM by SAMANTHA WEBB
 U:\Wichita-Each\2023\228003\044\PECDrawings\228003-044-01000