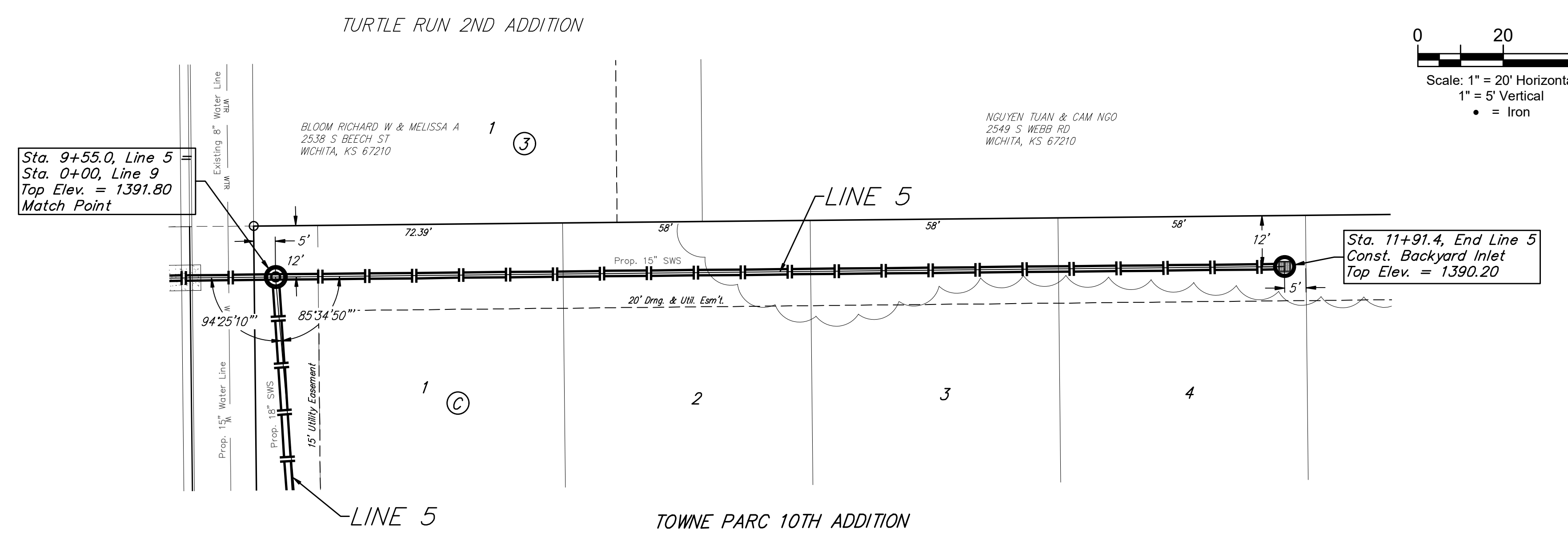
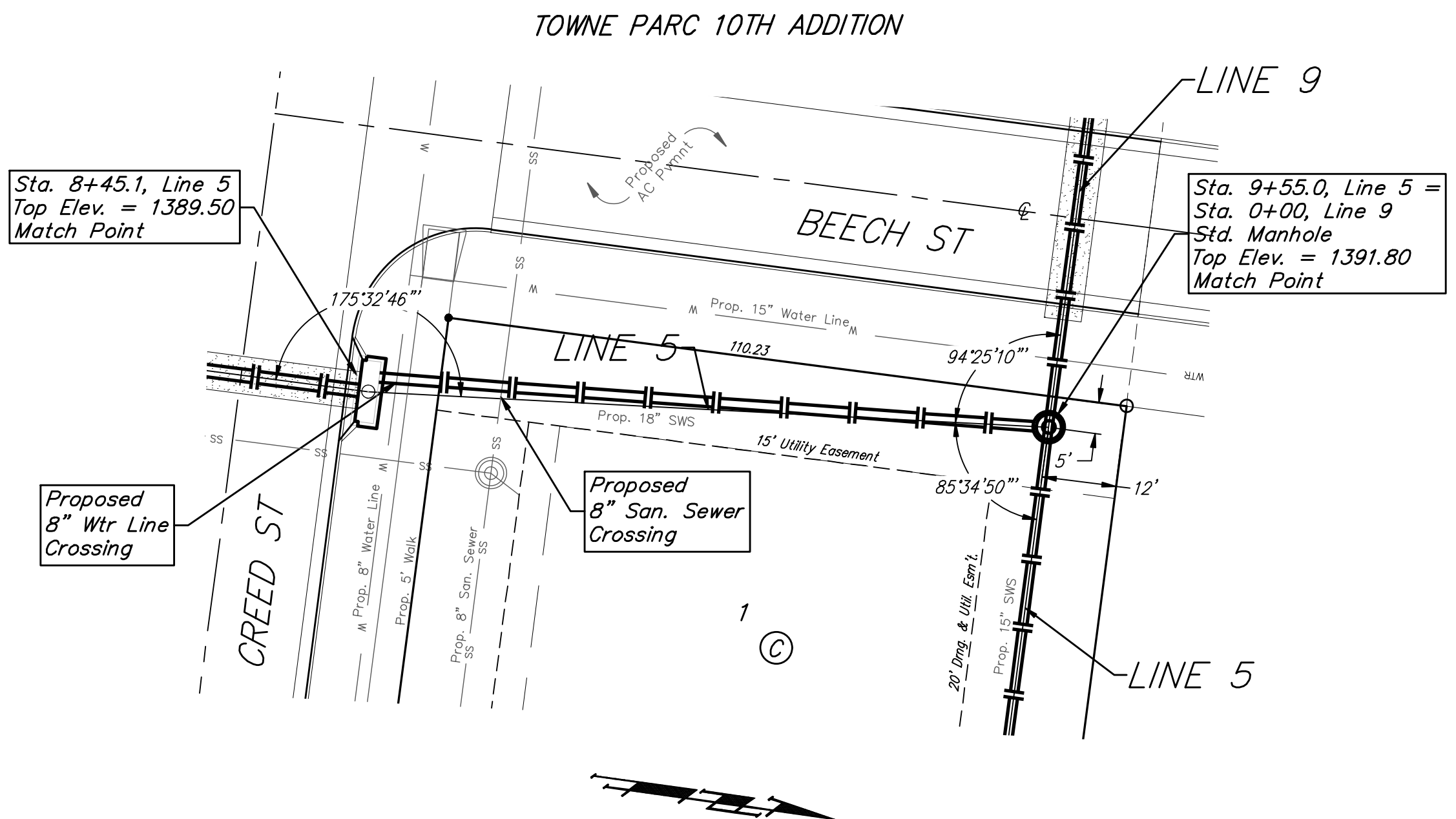
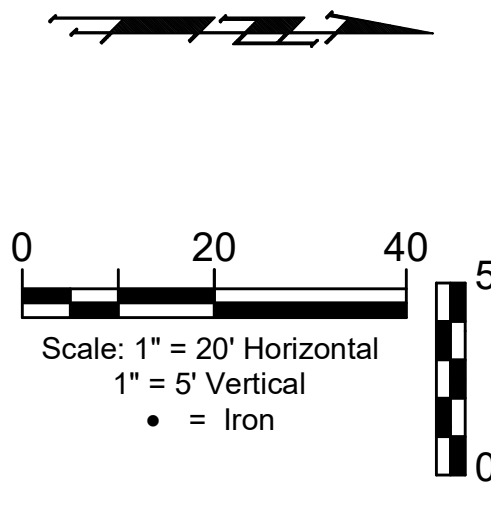


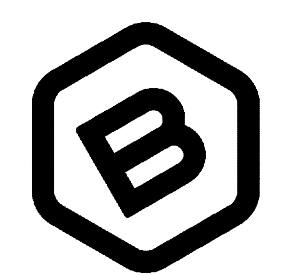
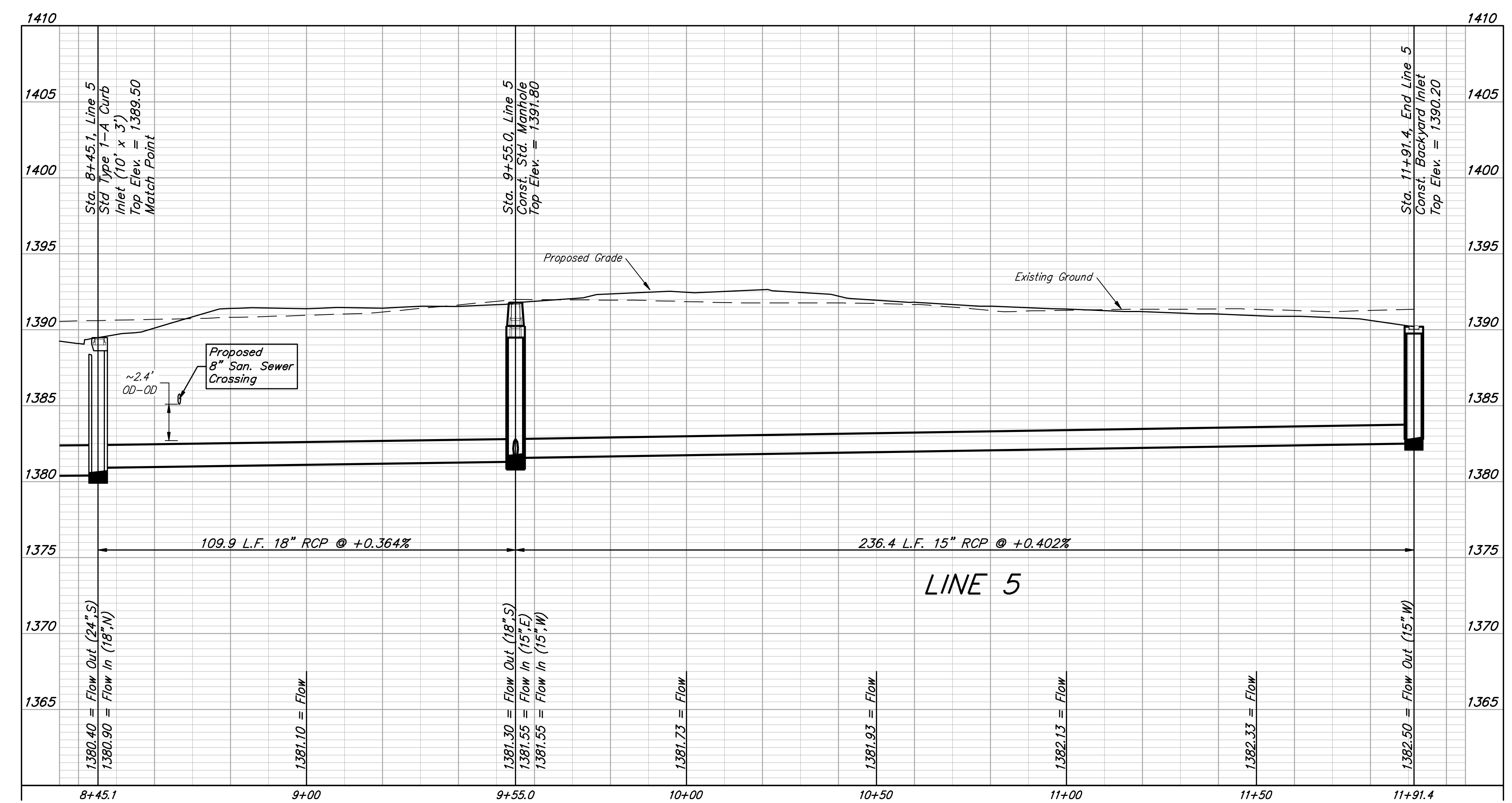
BENCHMARKS:
BM-1#:
 SQUARE CUT ON TOP OF CURB 119.3± N.
 ± 6.4± W. OF SE. COR., LOT 7, BLOCK 2,
 TURTLE RUN 3RD ADDITION.
 ELEV. = 1390.32 NAVD88

BM-2#:
 SQUARE CUT ON TOP OF CURB 118.4± N.
 OF SE. COR., LOT 6, BLOCK 2, TURTLE
 RUN 2ND ADDITION.
 ELEV. = 1391.04 NAVD88



Contractor to remove, repair, and replace existing sod and sprinkler lines/heads adjacent to storm sewer damaged during construction. All costs shall be included in the L.S. bid item "Site Restoration".

Existing trees which are in direct conflict with proposed new construction shall be removed by the Contractor ONLY with approval of the Developer or Engineer. Trees not in direct conflict with proposed new construction shall remain and be protected from damage. Cost shall be included in bid item "Site Clearing".



BAUGHMAN COMPANY
 315 Ellis St.
 Wichita, KS 67211
 316-262-7271
 BaughmanCo.com

TOWNE PARC 10TH ADDITION

LINE 5

STORM WATER DRAIN IMPROVEMENTS

PROJECT NUMBER:
468-2023-085536

DESIGN: NBW DRAWN: JLD

DATE: June 12, 2023

SHEET OF
10 37

File: E:\Projects\Towne Parc 10th Addition_22-01-P743\Engineering\PHASE 1\SWD_22-11-E352\SWD-SWD.dwg