

BENCHMARKS:
BM-1#
 SQUARE CUT ON TOP OF CURB 118.3± N.
 & 6.4± W. OF SE. COR. LOT 7, BLOCK 2,
 TURTLE RUN 3RD ADDITION.
 ELEV. = 1390.32 NAVD88

BM-2#
 SQUARE CUT ON TOP OF CURB 118.4± N.
 OF SE. COR. LOT 6, BLOCK 2, TURTLE
 RUN 2ND ADDITION.
 ELEV. = 1391.04 NAVD88

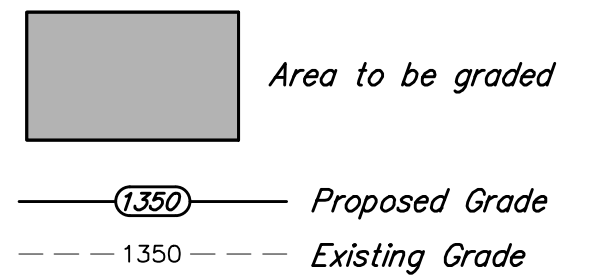
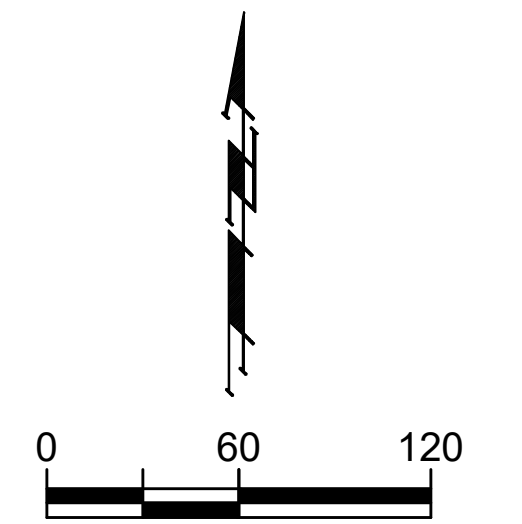
Mass Grading General Notes:

1. Excess material shall be removed by the contractor. Earthwork quantities are unadjusted and are for reference only based on the best available topography at time of design. The Contractor shall satisfy himself with the Earthwork quantities associated with the Bid Items "Excavation" & "Grading, Mass" prior to bidding. No additional payments or change orders for earthwork will be accepted.
2. Contractor to strip top 4-6" of soil within street right-of-way and all of the lots before mass grading. Following pond construction, topsoil is to be spread over Reserve "A" above static water surface (incidental to C.Y. "Excavation").
3. Compaction of 95% Standard Proctor Density shall be obtained in all areas. Fill shall be placed with moisture content of optimum to 4% at the time of placement. Compaction testing for the Lots shall be incidental to Lump Sum bid item "Testing". Right of Way and Pond Liner to be Tested by the City of Wichita at no cost to the project.
4. It shall be the Contractor's responsibility to protect existing utilities during mass grading. Any damage done to these systems by Contractor or subcontractor shall be repaired at no additional cost to the project.
5. All areas disturbed during construction shall be seeded, mulched, and fertilized as per Cover Sheet General Notes.
6. Street elevations are top of dirt at centerline.
7. Grade points around cul-de-sacs are located at 1' behind back of proposed curb.

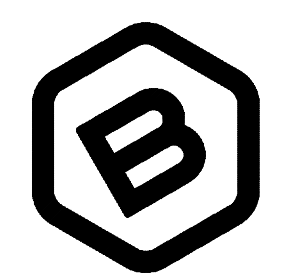
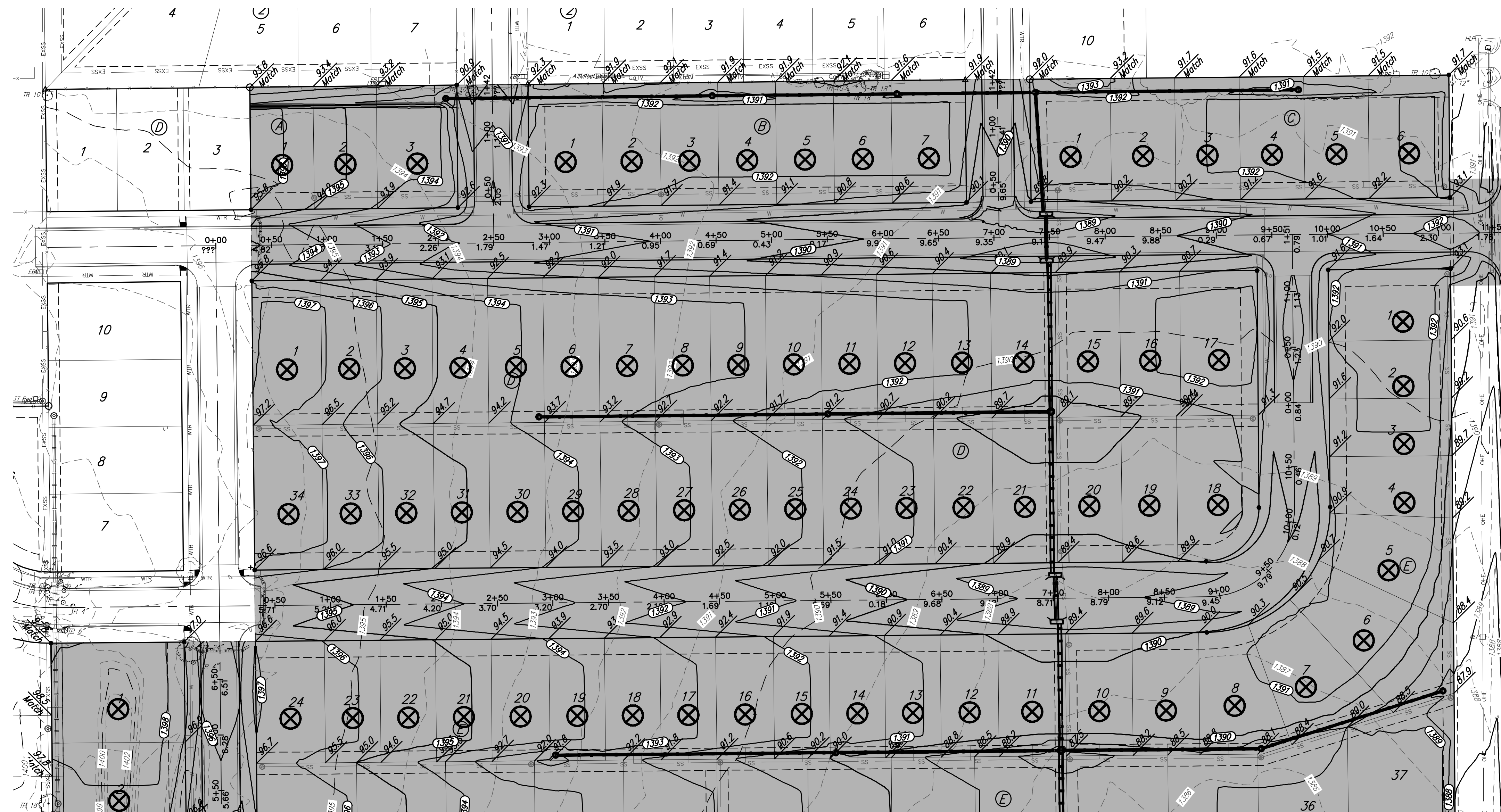
EARTH WORK TOTALS (Unadjusted)

	C. Y. EXCAVATION	C. Y. FILL
Project Totals	79,406	56,122

Earthwork Quantities reflect the best available topography. The Contractor shall satisfy himself with the earthwork quantities as bid for L.S. bid item "Grading, Mass" prior to bidding.



Existing trees which are in direct conflict with proposed new construction shall be removed by the Contractor ONLY with approval of the Developer or Engineer. Trees not in direct conflict with proposed new construction shall remain and be protected from damage. Cost shall be included in bid item "Site Clearing"



BAUGHMAN COMPANY
 315 Ellis St.
 Wichita, KS 67211
 316-262-7271
 BaughmanCo.com

TOWNE PARC 10TH ADDITION

MASS GRADING

STORM WATER DRAIN IMPROVEMENTS
 PROJECT NUMBER:
 468-2023-085536
 DESIGN: NBW DRAWN: JLD
 DATE: June 22, 2023
 SHEET OF
19R 37

Adjusted Surface From Bottom of LVC to Top of LVC.

File: E:\Projects\Towne Parc 10th Addition_22-01-P743\Engineering\PHASE 1\SWD_22-11-E392\SWIS-SWD.dwg