

LEGAL DESCRIPTION

Parcel A, Lot 1, Kellogg Mall Addition, Wichita, Sedgewick County, KS 67207

Note: This is not a sanitary sewer private project, or part of a private project.
Contact Steve Degenhardt, Construction Engineer for any questions relating to this project.
apr 7/13/2023

BENCHMARKS

Site Benchmark - 1
Square cut on top of curb, approx. 378.4' west and 160.8' south of the northwest corner of Parcel A, Lot 1, Kellogg Mall Addition, Wichita, Sedgewick County, KS 67207
Elevation = 1346.27 (NAVD 88)

Site Benchmark - 2
Square cut on top of curb, approx. 7.3' west and 61.7' north of the southwest corner of Parcel A, Lot 1, Kellogg Mall Addition, Wichita, Sedgewick County, KS 67207
Elevation = 1348.52 (NAVD 88)

KANSAS ONE CALL

Contractor shall be required to provide notice to Kansas One Call at 287-2470 a minimum of three (3) working days prior to any excavation or work adjacent to utilities.
Kansas One Call 1-800-DIG-SAFE

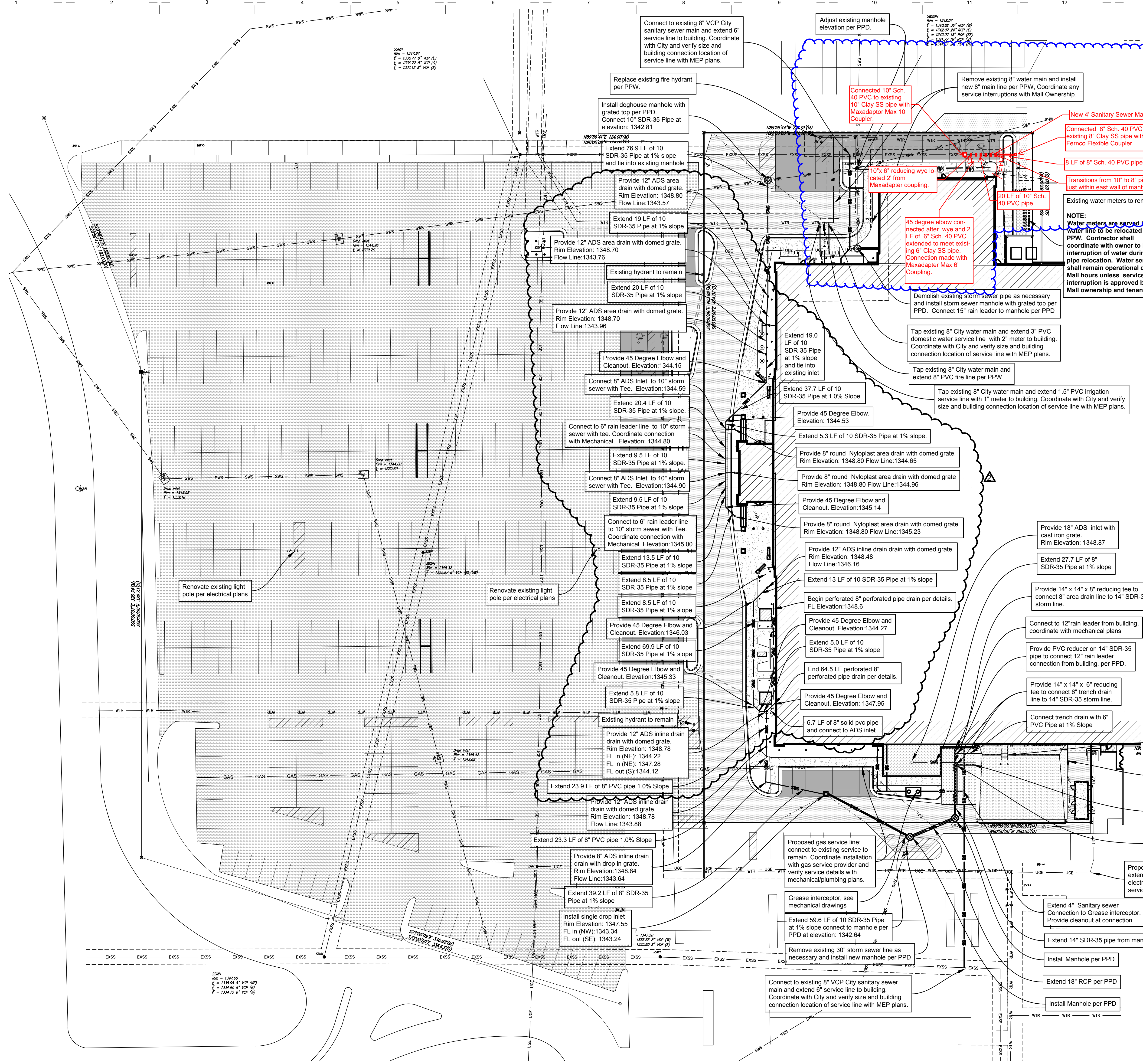
UTILITY CONTACTS

The Contractor must notify the following in case of an emergency:

- Kansas Gas Service (Gas).....1-888-482-4950
- Black Hills Energy (Gas).....1-800-303-0357
- Energy (Electric).....383-8650
- Cox Communications (Telecommunication).....262-4270
- AT&T (Telecommunication).....268-2759
- City of Wichita Water Dept. (Water).....268-4563
or 268-4908
- City of Wichita Sewer Maint.(San. Sewer).....268-4024
or 262-6000
- City of Wichita Storm Sewer Maint. (Storm Sewer).....268-4090
- City of Wichita Traffic Maint.(Tran. Control).....268-4034
- Conoco Pipeline Co. (Petroleum).....1-800-231-2551
- Williams Pipeline Co. (Petroleum).....529-6600
or 1-800-324-9696
- Phillips Pipeline Co. (Petroleum).....1-800-766-8230

UTILITY NOTES

1. Existing utilities and their locations, as shown on the plans, represent the best information obtainable for design. Location information has been obtained from the various utility companies and is either from company record drawings or company provided field locations. The Contractor will be required to work around existing utilities which do not conflict with proposed construction.
2. Traffic affected by the construction on this project shall be handled in accordance with the latest edition of the Local Manual on Uniform Traffic Control Devices.
3. The Contractor shall verify all utility locations prior to construction of this project.
4. Refer to Landscape Plan for treatment of disturbed areas.
5. Proposed Water Main and Fire Hydrants shall be the contractor's responsibility. This portion of the project shall be constructed under "Private Project." The Water Main and Fire Hydrants shall be designed separately, and undergo Local City review and approval. The installation of the Water Main and Fire Hydrants are required to be done by a bonded contractor, inspected and verified. Refer to Separate Water Main and Fire Hydrants Plan Set. The Contractor shall construct the Water Main and Fire Hydrants only from Local City approved plans which will be provided to the General Contractor or can be provided by Baughman Company, P.A.
6. Proposed storm water sewer shall be the contractor's responsibility. This portion of the project shall be constructed under "Private Project." The storm sewer system shall be designed separately, and undergo Local City review and approval. The installation of the storm sewer is required to be done by a bonded contractor, inspected and certified. Refer to Separate Sewer and Storm Water Sewer Plan Set. The Contractor shall construct the sewer only from Local City approved plans which will be provided to the General Contractor or can be provided by Baughman Company, P.A.
7. The Contractor shall receive written approval from adjacent landowners prior to proceeding with any construction work on landowner's property.
8. Gas service tie-ins to new meters shall be per service provider standards. Tie-ins are to be above ground at the meter.
9. Utility service connections are to be installed per applicable Local City Codes.
10. Contractor shall be responsible for coordination and cost of all utility service connections, permits, relocations, abandonments, and removals.
11. Water taps to be made by Local City Water Department. Contractor to reimburse City for tapping costs.



LEGEND

Existing Utilities		Proposed Utilities	
USE	USE	USE	USE
OHE	OHE	Electric Underground	Electric Underground
WTR	WTR	Water Line	Water Line
GAS	GAS	Sanitary Sewer Line	Sanitary Sewer Line
PIPELINE	PIPELINE	Gas Service Line	Gas Service Line
SWS	SWS	Storm Sewer Roof Drain	Storm Sewer Roof Drain
EXSS	EXSS	Fire Sprinkler Line	Fire Sprinkler Line
AT&T	AT&T	Storm Water Sewer	Storm Water Sewer
C&TV	C&TV	Telecom/Data Conduit	Telecom/Data Conduit
		Electric Overhead	Electric Overhead
		Gas Line	Gas Line
		Petroleum Pipeline	Petroleum Pipeline
		Storm Water Sewer Pipe	Storm Water Sewer Pipe
		Sanitary Sewer Line	Sanitary Sewer Line
		Telecommunication (AT&T)	Telecommunication (AT&T)
		Telecommunication (Cox)	Telecommunication (Cox)

