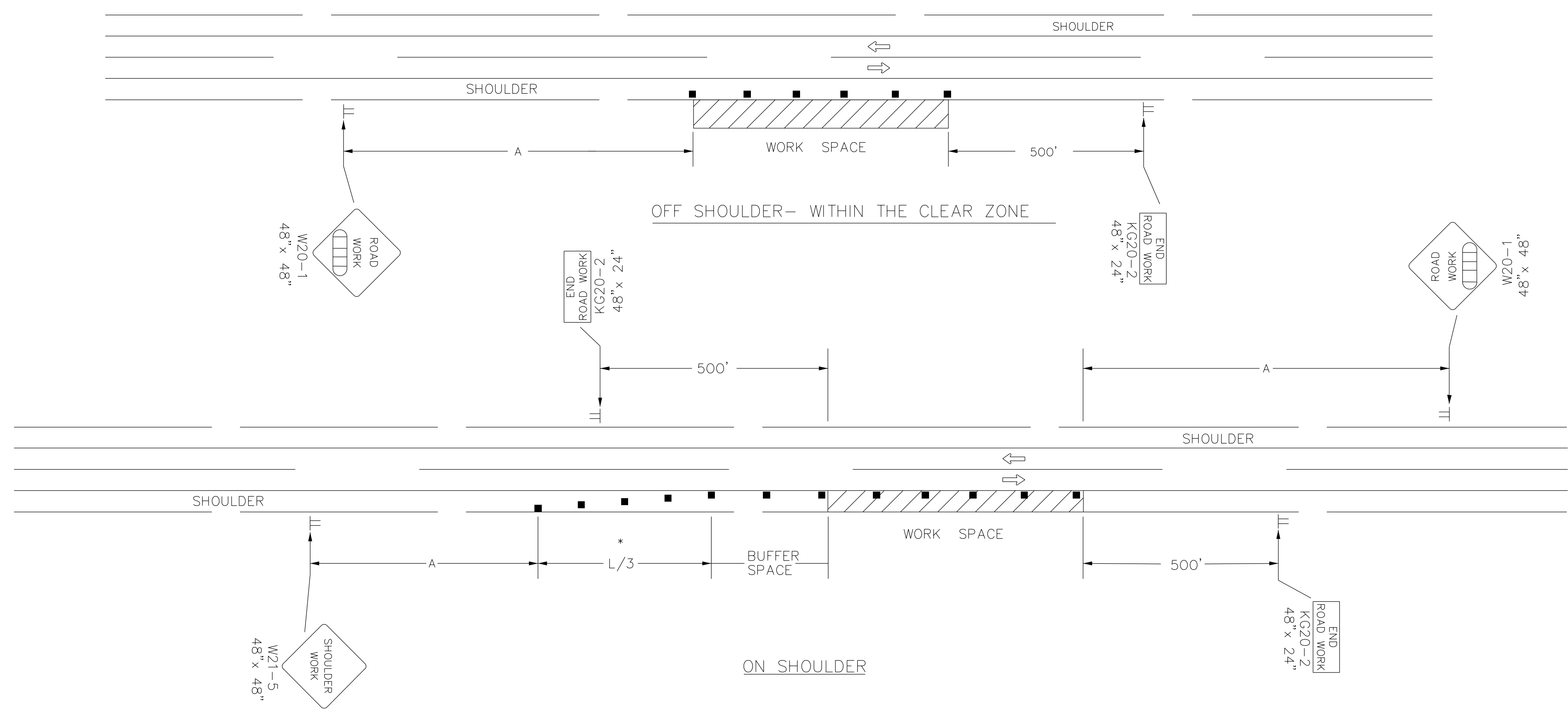


STATE	PROJECT NO.	YEAR	SHEET NO.	TOTAL SHEETS
KANSAS				

DATE	DESCRIPTION	MARK

REFER TO STD. TE710 FOR ADDITIONAL INFORMATION ON TEMPORARY TRAFFIC CONTROL SIGNS AND SIGN SPACING.
 REFER TO STD. TE702 FOR INFORMATION ON TAPERS AND CHANNELIZING DEVICES.
 REFER TO STD. TE700 FOR LENGTH OF BUFFER SPACE.

NOTE:
 NO TRAFFIC CONTROL IS REQUIRED IF THE WORK SPACE IS LOCATED OUTSIDE OF THE CLEAR ZONE.
 FOR OPERATIONS OF 60 MINUTES OR LESS, ALL SIGNS AND CHANNELIZING DEVICES MAY BE ELIMINATED IF A VEHICLE WITH HIGH-INTENSITY ROTATING, FLASHING, OSCILLATING, OR STROBE LIGHTS IS USED.



WHEN CONCRETE BARRIER SYSTEM IS USED, PORTABLE CHANNELIZING DEVICES ARE NOT NEEDED ALONG THE TANGENT BARRIER SECTION. DELINEATION ON THE BARRIER SYSTEM IS STILL REQUIRED. SEE RD622.

* OMIT TAPER IF PAVED SHOULDER IS LESS THAN 8' WIDE.

■ Channelizing Device
 □□□□ AHEAD, 1500 FT, OR 1 MILE

NO.	DATE	REVISIONS	BY	APP'D
3	8-8-07	G20-2 CHANGED TO KG20-2	M.B.	A.A.A.
2	12-29-05	UPDATED END ROAD WORK SIGN DESIGNATION	M.B.	A.A.A.
1	11-19-03	CHANGED BORDER	B.H.	S.A.B.

KANSAS DEPARTMENT OF TRANSPORTATION
 TYPICAL TRAFFIC CONTROL WORK ON OR NEAR THE SHOULDER UNDIVIDED HIGHWAY (2 OR 4 LANE)
 TE720 9/1/00

DESIGNED	L.E.R.	8-8-07	APP'D	Anthony A. Alroboire
DESIGN CK.	DETAIL CK.	B.A.H.	QUANTITIES	TRACED
			QUAN. CK.	TRACE CK.

amec
 AMEC Earth & Environmental, Inc.
 1129 SW Wensmaker
 Topeka, Kansas 66604
 Phone: (785) 272-6830
 Fax: (785) 272-6878

CITY OF WICHITA

UPPER LEVEE "D", LEVEES "K", "L", "M", "N" AND "P" TOE DRAIN INSTALLATION
 WICHITA-VALLEY CENTER LOCAL
 FLOOD PROTECTION PROJECT
 WICHITA, KANSAS

PREPARED FOR
 THE CITY OF WICHITA, KANSAS
 465 N. Main
 Wichita, KS 67202

LAWRENCE J. SAMPLE
 LICENSED PROFESSIONAL ENGINEER
 45855
 8/13/12
 KANSAS

DESIGNED BY:	LARRY SAMPLE, PE	DATE:	08-13-2012
DWN BY:	RES	CKD BY:	LBK
APP BY:	L. SAMPLE		

AMEC PROJ. NO. 5-6150-0001
 TRAFFIC CONTROL DETAILS AND NOTES
C-4.04
 SHEET 21 OF 21