

WATER DISTRIBUTION SYSTEM

to serve

TURKEY CREEK 4TH ADDITION - PHASE III

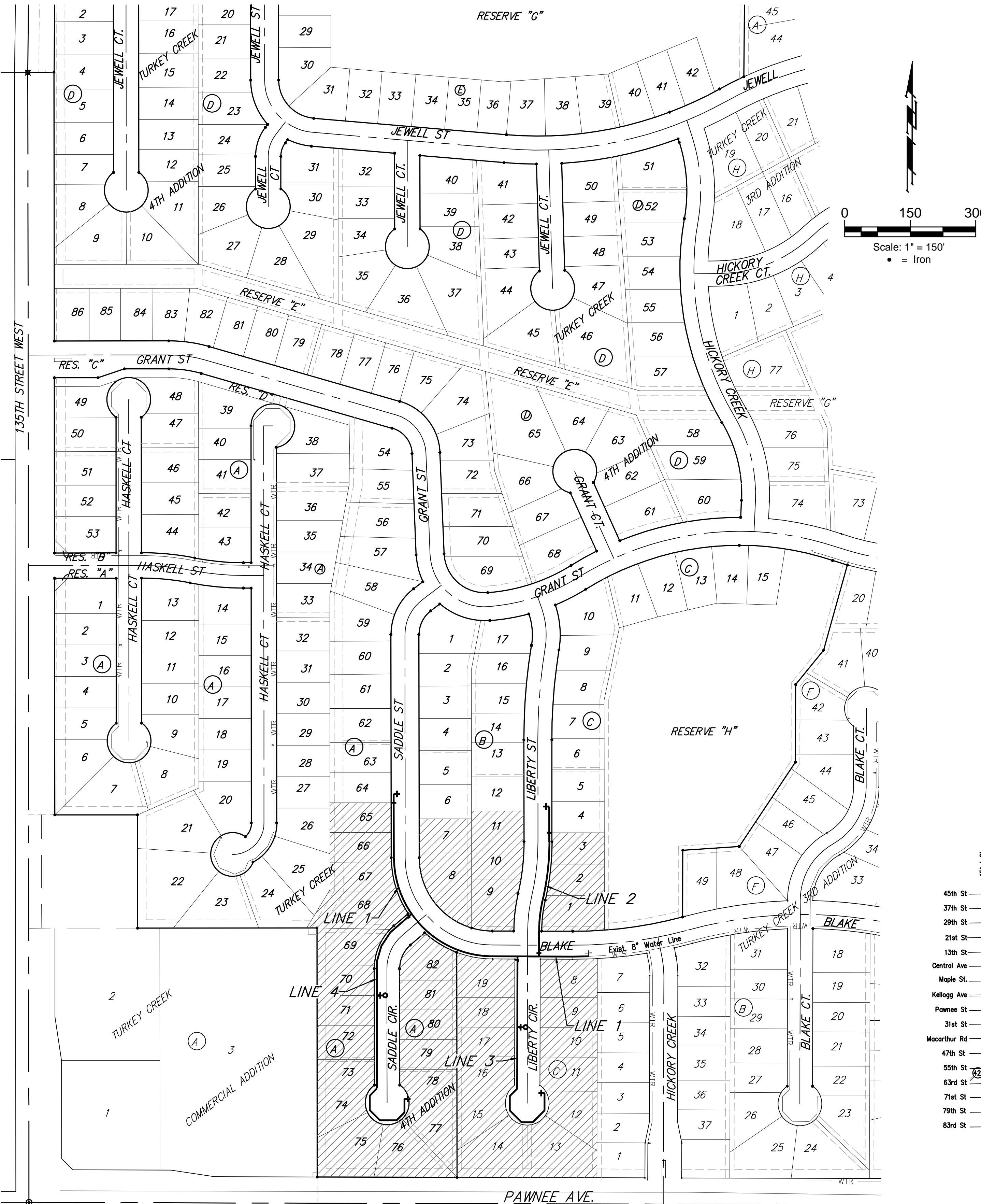
CITY OF WICHITA, KANSAS

Paul Gunzelman, P.E. Interim City Engineer

Project Number: 448-448-2020-016828

Org Code Number 47119722

Munis Number E2108



SHEET INDEX

Title Sheet	1
Standard Water Details	2-3
Line 1	4-5
Line 2	6
Line 3	7
Line 4	8
Erosion Control Plan	9
Erosion Control Details	10-14
Coordinate Sheet	15-16
Copy of Plat	17

BENCHMARKS

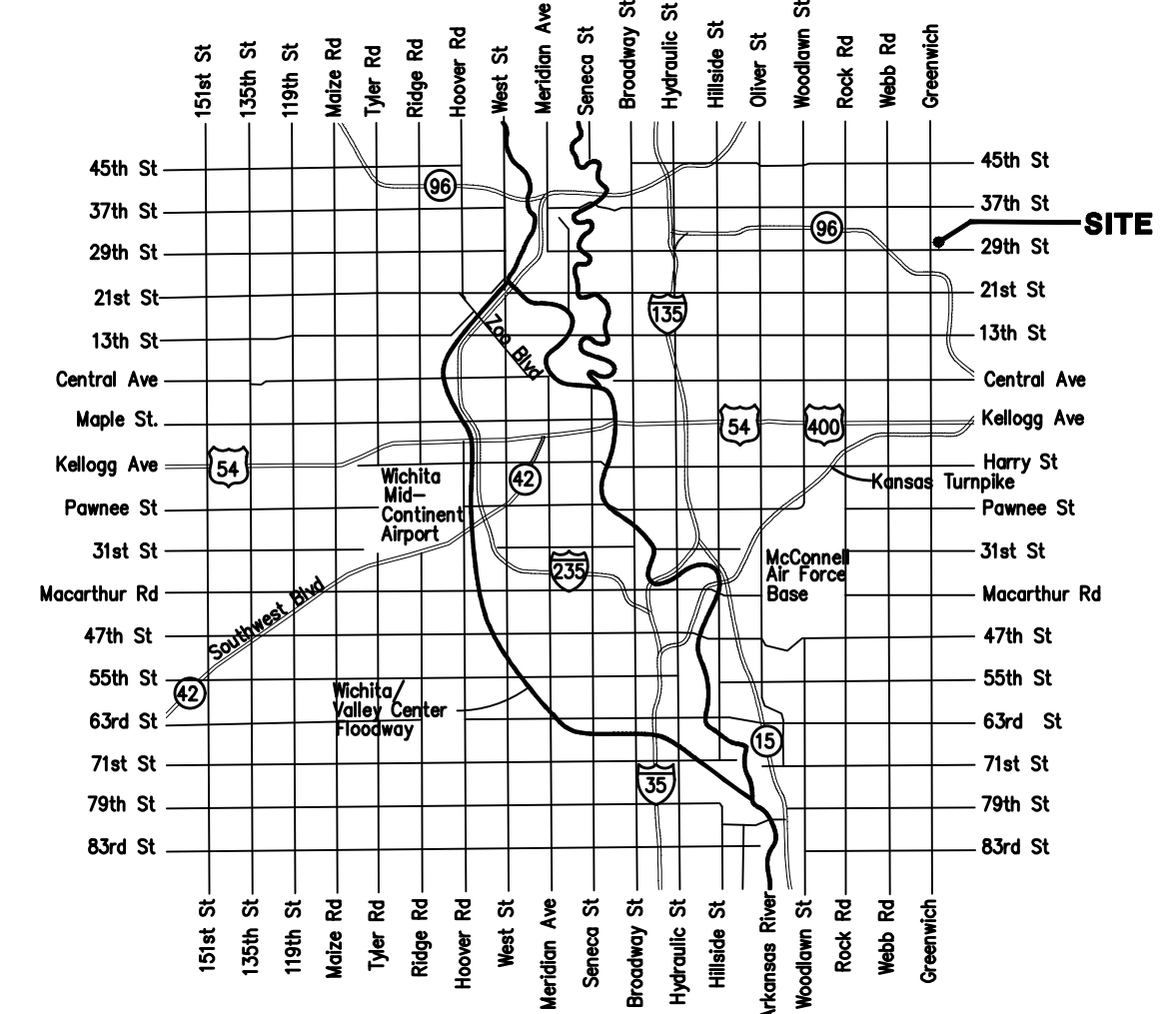
RR spike in asphalt, SW Cor., N1/2, SW1/4, Sec. 34, TWP. 26-S, R-2-E. Elev. = 1400.59 NAVD

R.R. spike in E. face of power pole, 174± N. of S. line, N1/2, SW1/4, & 49± E. of W. line, SW1/4, SEC. 34, TWP. 26-S, R-2-E. Elev. = 1398.64 NAVD88

R.R. spike in S. face of power pole, 294± S. of N. line, SW1/4, & 48± E. of W. line, SW1/4, SEC. 34, TWP. 26-S, R-2-E. Elev. = 1386.14 NAVD88

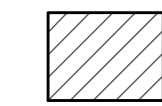
GENERAL NOTES:

- Contractor will be required to provide notice to utility companies a minimum of seventy-two (72) hours prior to any excavation, as follows:
Kansas One-Call 687-2470
The Contractor must notify the following in case of an emergency:
Cox Communications 262-4270
Kansas Gas Service 1-888-482-4950
Westar Energy 383-8650
Aquila Energy 1-800-303-0357
A/T/T 268-2245
City of Wichita Water Dept. 268-4363
City of Wichita Sewer Maint. 268-4024
City of Wichita Storm Sewer Maint. 268-4090
City of Wichita Traffic Maint. 268-4034
Conoco Phillips Pipeline Co. 1-877-267-2290
Southern Star Pipeline Co. 529-6600
Kinder-Morgan Pipeline Co. 1-888-844-5658
- All existing and proposed erosion control measures including silt fencing, erosion control mat, straw bales, inlet barriers, and const. entrance shall be maintained throughout construction by the contractor and until project is accepted by the City of Wichita. The on-site engineer shall complete weekly reports on the status of erosion control measures. The contractor shall be required to comply with maintenance and/or replacement of erosion control measures as determined by the on-site engineer until project is accepted by City of Wichita. Maintenance and/or replacement of erosion control measures to be paid by L.S. bid item "Maintain Existing BMP's."
- The Contractor shall adjust water valve boxes and fire hydrants as directed by the Engineer at the price bid for said adjustments. The Water Department shall field locate water valves one time during construction when requested by Contractor. It shall be the Contractor's responsibility to preserve such field locations during the construction process. Water valves, water valve boxes or fire hydrants damaged during construction shall be repaired by the Contractor at his own expense.
- All construction shall be completed following current City Standard Specifications and Special Provisions.
- All excess excavation shall be removed from the site by the Contractor. Cost of removal shall be included in lump sum bid item "Site Clearing & Restoration."
- Opening and closing of water valves shall be done slowly to prevent damage to the water distributions system from water hammer. All valves closed by the contractor must be reopened as new construction permits. Project inspector must ascertain that any valve closed by the Contractor is reopened. Contractor will be permitted to operate water valves only when the project inspector assigned to the project is present.
- Maintain a minimum of 10-foot horizontal separation between all water lines (mains, services, and fire hydrants) and all sanitary sewer lines (mains, services, and manholes). All separation distances are to be measured from edge-to-edge, at the closest point.
- Maintain a minimum of 2-foot vertical separation between all water lines (mains and services) and all gravity sanitary sewer lines (mains, services, and manholes) at crossings. All separation distances are to be measured from edge-to-edge, at the closest point.
- Maintain a minimum of 2-foot vertical separation between all water lines (mains and services) and all pressurized sanitary sewer lines (force mains and services) at crossings. Waterlines must always be placed above pressurized sanitary sewer lines where they cross. All separation distances are to be measured from edge-to-edge, at the closest point.
- The Developer for this project is Paul Kelsey 716 N. 119th St. #112, Wichita, KS 67212 PH# (316)722-1077 email paul.kelsey8@gmail.com



VICINITY MAP

BENEFIT DISTRICT



BAUGHMAN COMPANY
315 Ellis St. Wichita, KS 67211 316-262-7271
BaughmanCo.com

June 26, 2023

E:\Projects\Turkey Creek 4th Addition\Phase 3\WTR_22-06-E215\WTR_22-06-E215.dwg