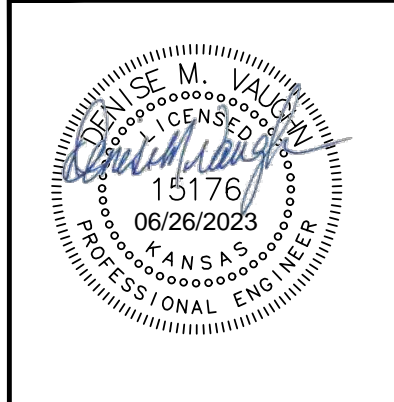
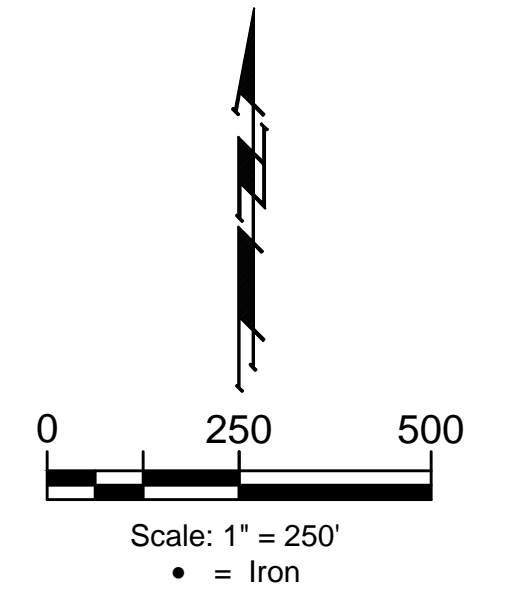
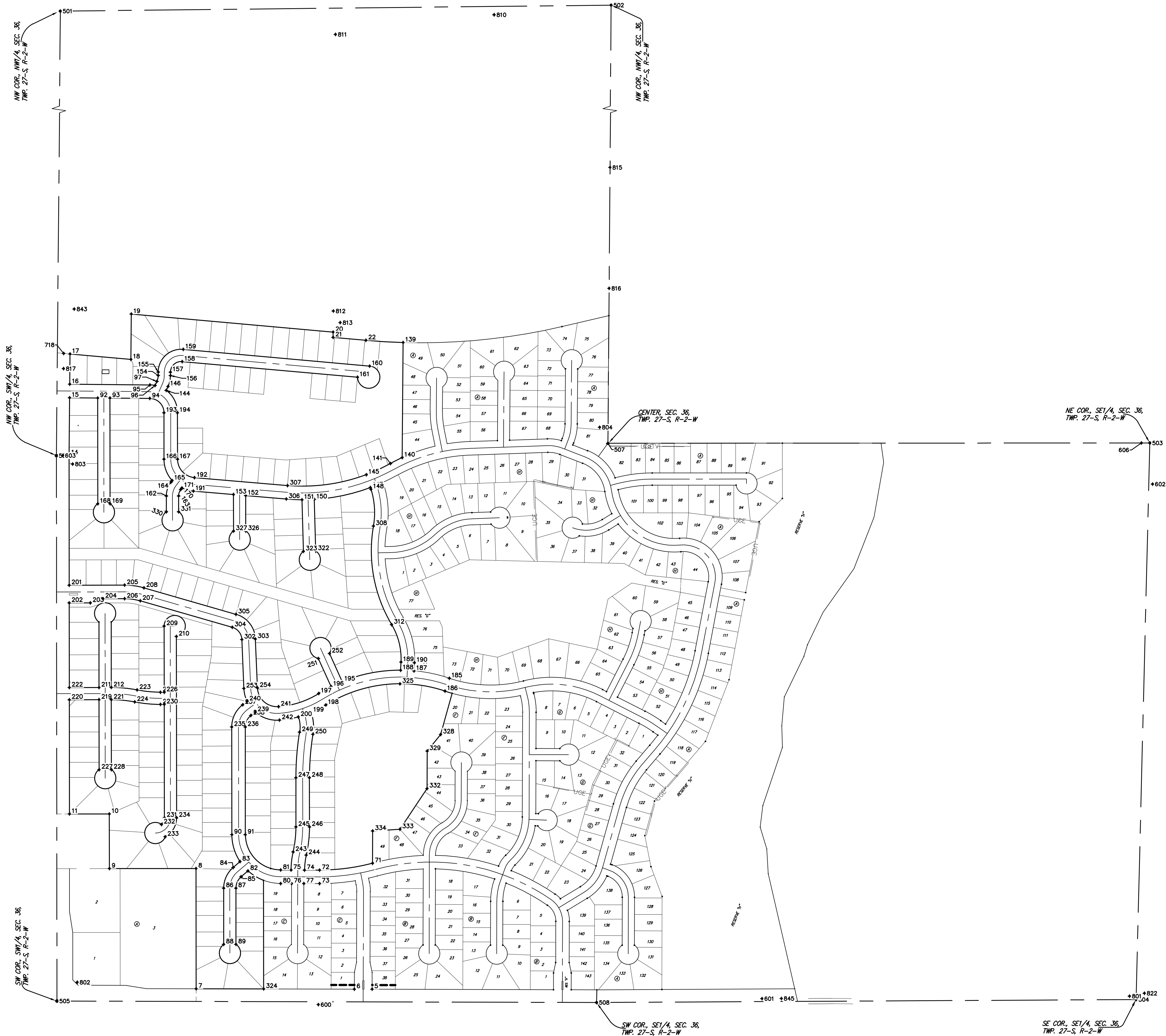


**BENCHMARKS:**  
 RR spike in asphalt, SW Cor.,  
 N1/2, SW1/4, Sec. 36, TWP. 26-S,  
 R-2-E.  
 Elev. = 1400.59 NAVD

RR spike in E. face of power pole,  
 174± N. of S. line, N1/2, SW1/4  
 & 49± E. of W. line, SW1/4, SEC.  
 34, TWP. 26-S, R-2-E.  
 Elev. = 1398.64 NAVD88

RR spike in S. face of power pole,  
 294± S. of N. line, SW1/4, &  
 48± E. of W. line, SW1/4, SEC. 34,  
 TWP. 26-S, R-2-E.  
 Elev. = 1386.14 NAVD88



**BAUGHMAN COMPANY**  
 315 Ellis St.  
 Wichita, KS 67211  
 316-262-7271  
 BaughmanCo.com

TURKEY CREEK 4TH  
 ADDITION - PHASE III

**COORDINATES**

WATER DISTRIBUTION  
 SYSTEM  
 PROJECT NUMBER:  
 448-2020-016828  
 DESIGN: DMV DRAWN: JAK  
 DATE: June 26, 2023  
 SHEET OF  
 15 17

File: E:\Projects\Turkey Creek 4th\_Engineering\Phase 3\WTR\_22-06-E215\WTR\_22-06-E215.dwg