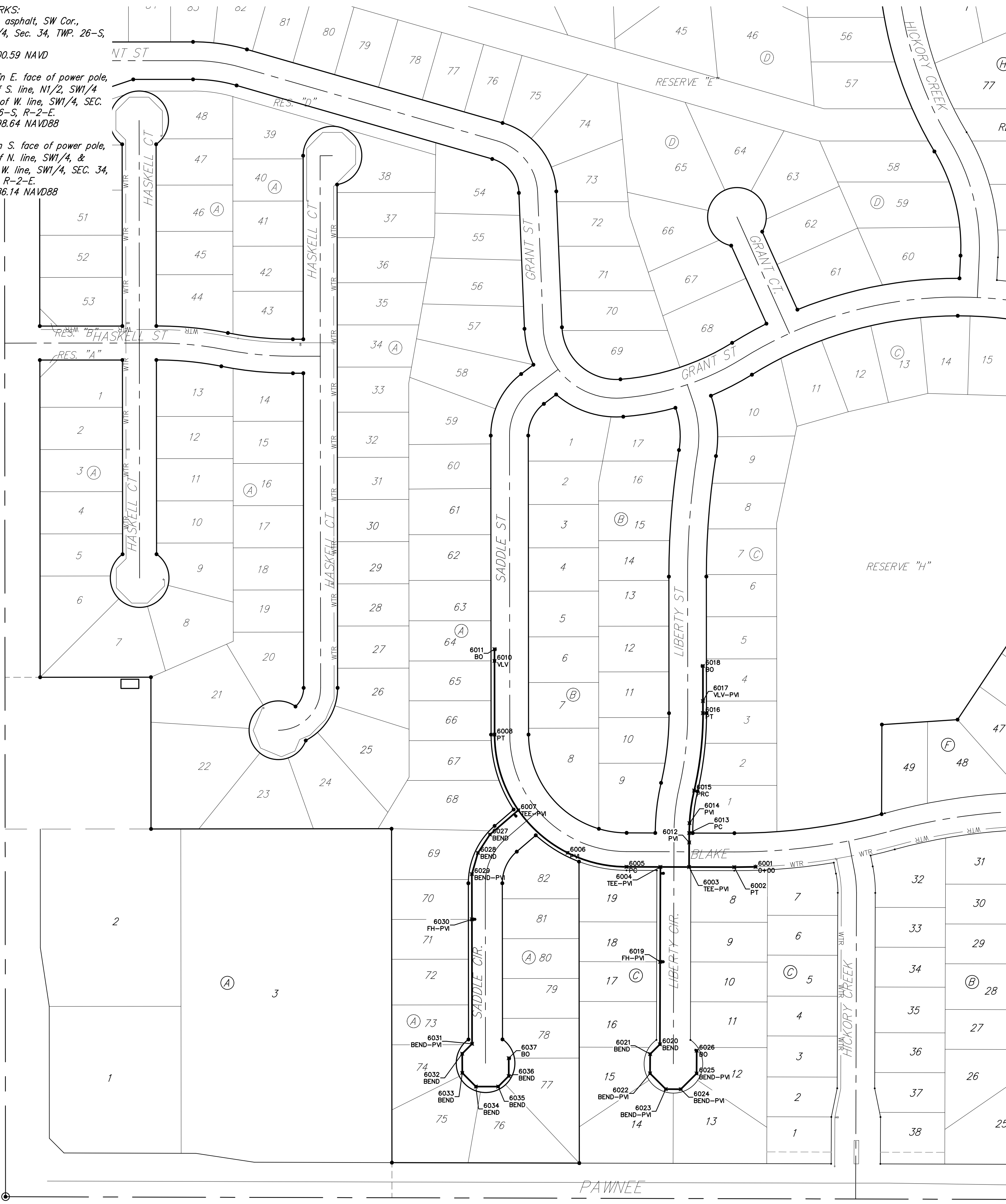


**BENCHMARKS:**  
 RR spike in asphalt, SW Cor.,  
 N1/2, SW1/4, Sec. 34, TWP. 26-S,  
 R-2-E.  
 Elev. = 1400.59 NAVD

RR spike in E. face of power pole,  
 174± N. of S. line, N1/2, SW1/4  
 & 49± E. of W. line, SW1/4, SEC.  
 34, TWP. 26-S, R-2-E.  
 Elev. = 1398.64 NAVD88

RR spike in S. face of power pole,  
 294± S. of N. line, SW1/4, &  
 48± E. of W. line, SW1/4, SEC. 34,  
 TWP. 26-S, R-2-E.  
 Elev. = 1386.14 NAVD88

135TH STREET WEST



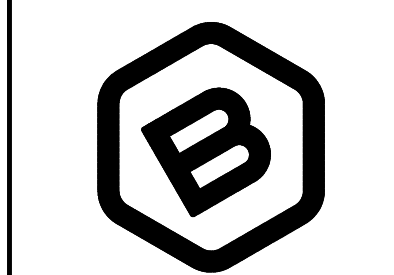
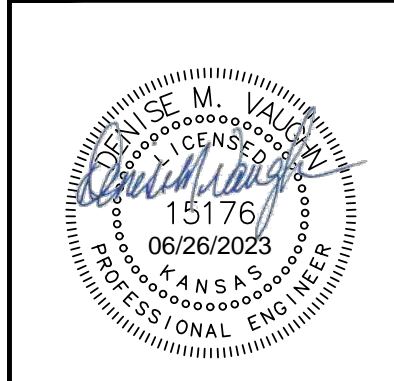
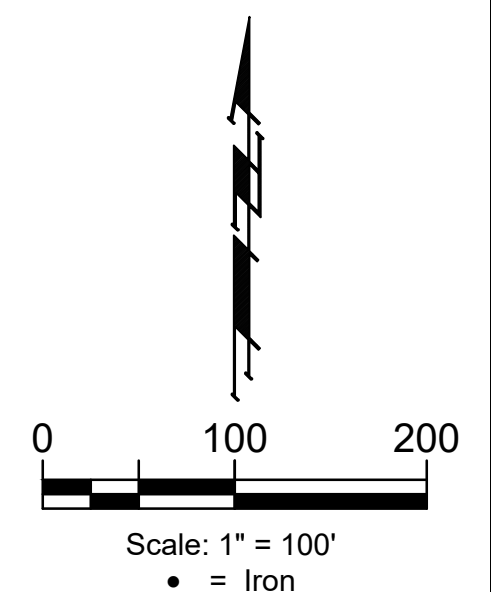
| IRONS |           |           |
|-------|-----------|-----------|
| Point | Northing  | Easting   |
| 5     | 27,409.65 | 26,374.75 |
| 6     | 27,409.88 | 26,290.75 |
| 7     | 27,411.88 | 25,540.53 |
| 8     | 27,981.91 | 25,539.98 |
| 9     | 27,981.51 | 25,129.18 |
| 10    | 28,240.67 | 25,128.92 |
| 11    | 28,240.49 | 24,939.72 |
| 14    | 29,940.46 | 24,938.07 |
| 15    | 30,213.73 | 24,940.55 |
| 16    | 30,277.72 | 24,941.13 |
| 17    | 30,421.04 | 24,942.43 |
| 18    | 30,395.11 | 25,231.07 |
| 19    | 30,610.28 | 25,233.01 |
| 20    | 30,524.78 | 26,190.13 |
| 21    | 30,499.70 | 26,189.92 |
| 22    | 30,485.79 | 26,345.67 |
| 71    | 28,006.87 | 26,376.95 |
| 72    | 27,974.32 | 26,125.45 |
| 73    | 27,910.32 | 26,125.28 |
| 74    | 27,974.51 | 26,054.26 |
| 75    | 27,974.68 | 25,990.26 |
| 76    | 27,910.67 | 25,993.09 |
| 77    | 27,910.52 | 26,051.09 |
| 80    | 27,910.81 | 25,941.20 |
| 81    | 27,974.81 | 25,941.37 |
| 82    | 27,970.70 | 25,786.25 |
| 83    | 28,014.66 | 25,748.42 |
| 84    | 27,986.71 | 25,715.93 |
| 85    | 27,942.74 | 25,753.76 |
| 86    | 27,888.80 | 25,671.07 |
| 87    | 27,888.85 | 25,729.07 |
| 88    | 27,622.15 | 25,671.33 |
| 89    | 27,622.21 | 25,729.33 |
| 90    | 28,142.58 | 25,709.82 |
| 91    | 28,142.65 | 25,773.82 |
| 92    | 30,212.52 | 25,073.80 |
| 93    | 30,212.00 | 25,131.80 |
| 94    | 30,210.29 | 25,320.49 |
| 95    | 30,274.29 | 25,321.06 |
| 96    | 30,271.74 | 25,345.71 |
| 97    | 30,290.96 | 25,354.26 |
| 139   | 30,475.38 | 26,521.52 |
| 140   | 29,929.91 | 26,517.25 |
| 141   | 29,901.66 | 26,461.55 |
| 144   | 30,248.17 | 25,398.71 |
| 145   | 29,848.82 | 26,347.31 |
| 146   | 30,267.38 | 25,407.25 |
| 147   | 29,787.72 | 26,366.65 |
| 148   | 29,779.67 | 26,369.20 |
| 150   | 29,731.65 | 26,100.33 |
| 151   | 29,730.05 | 26,042.35 |
| 152   | 29,749.70 | 25,775.56 |
| 153   | 29,754.62 | 25,717.56 |
| 154   | 30,319.17 | 25,360.39 |
| 155   | 30,335.13 | 25,360.53 |
| 156   | 30,318.65 | 25,418.38 |
| 157   | 30,334.60 | 25,418.53 |
| 158   | 30,384.94 | 25,474.06 |
| 159   | 30,442.71 | 25,479.22 |
| 160   | 30,363.75 | 26,363.22 |

| IRONS |           |           |
|-------|-----------|-----------|
| Point | Northing  | Easting   |
| 161   | 30,310.67 | 26,305.50 |
| 162   | 29,747.64 | 25,399.26 |
| 163   | 29,747.70 | 25,457.26 |
| 164   | 29,813.57 | 25,421.38 |
| 165   | 29,820.82 | 25,426.86 |
| 166   | 29,922.08 | 25,388.09 |
| 167   | 29,922.15 | 25,452.09 |
| 168   | 29,710.86 | 25,074.29 |
| 169   | 29,710.92 | 25,132.29 |
| 170   | 29,778.55 | 25,467.61 |
| 171   | 29,785.79 | 25,473.09 |
| 185   | 28,883.51 | 26,740.78 |
| 186   | 28,822.84 | 26,720.40 |
| 187   | 28,918.61 | 26,573.78 |
| 188   | 28,921.58 | 26,509.85 |
| 189   | 28,960.37 | 26,511.65 |
| 190   | 28,957.39 | 26,575.59 |
| 191   | 29,770.78 | 25,527.23 |
| 192   | 29,834.55 | 25,532.64 |
| 193   | 30,142.36 | 25,387.87 |
| 194   | 30,142.43 | 25,451.87 |
| 195   | 28,868.09 | 26,233.08 |
| 196   | 28,844.22 | 26,180.23 |
| 197   | 28,811.46 | 26,121.63 |
| 198   | 28,757.09 | 26,155.39 |
| 199   | 28,721.09 | 26,085.33 |
| 200   | 28,700.51 | 26,024.73 |
| 201   | 29,325.00 | 24,938.67 |
| 202   | 29,241.00 | 24,938.75 |
| 203   | 29,241.09 | 25,038.75 |
| 204   | 29,261.15 | 25,098.73 |
| 205   | 29,325.25 | 25,200.87 |
| 206   | 29,261.25 | 25,200.94 |
| 207   | 29,250.82 | 25,275.24 |
| 208   | 29,312.33 | 25,292.93 |
| 209   | 29,130.90 | 25,388.86 |
| 210   | 29,081.60 | 25,446.91 |
| 211   | 28,840.13 | 25,080.14 |
| 212   | 28,840.19 | 25,138.14 |
| 219   | 28,782.13 | 25,080.20 |
| 220   | 28,782.00 | 24,939.20 |
| 221   | 28,782.19 | 25,138.20 |
| 222   | 28,840.00 | 24,939.14 |
| 223   | 28,828.31 | 25,260.40 |
| 224   | 28,771.41 | 25,249.19 |
| 225   | 28,817.53 | 25,371.39 |
| 226   | 28,817.55 | 25,389.16 |
| 227   | 28,450.52 | 25,080.52 |
| 228   | 28,450.58 | 25,138.52 |
| 229   | 28,759.53 | 25,371.45 |
| 230   | 28,759.55 | 25,389.22 |
| 231   | 28,222.36 | 25,389.74 |
| 232   | 28,190.53 | 25,375.84 |
| 233   | 28,132.55 | 25,393.36 |
| 234   | 28,222.42 | 25,447.74 |
| 235   | 28,653.07 | 25,709.32 |
| 236   | 28,653.14 | 25,773.32 |
| 237   | 28,758.16 | 25,761.27 |
| 238   | 28,707.27 | 25,800.08 |
| 239   | 28,723.24 | 25,821.02 |

| IRONS |           |           |       |
|-------|-----------|-----------|-------|
| Point | Northing  | Easting   | Elev. |
| 240   | 28,774.13 | 25,782.20 |       |
| 241   | 28,749.17 | 25,930.83 |       |
| 242   | 28,685.35 | 25,935.65 |       |
| 243   | 28,060.20 | 26,000.19 |       |
| 244   | 28,045.70 | 26,062.52 |       |
| 245   | 28,179.19 | 26,013.79 |       |
| 246   | 28,179.25 | 26,077.79 |       |
| 247   | 28,412.28 | 26,013.56 |       |
| 248   | 28,412.34 | 26,077.56 |       |
| 249   | 28,628.34 | 26,030.79 |       |
| 250   | 28,618.13 | 26,093.97 |       |
| 251   | 28,977.36 | 26,120.08 |       |
| 252   | 29,001.24 | 26,172.94 |       |
| 253   | 28,835.42 | 25,766.95 |       |
| 254   | 28,838.06 | 25,830.90 |       |
| 302   | 29,067.36 | 25,757.36 |       |
| 303   | 29,070.01 | 25,821.31 |       |
| 304   | 29,125.31 | 25,711.82 |       |
| 305   | 29,186.82 | 25,729.51 |       |
| 306   | 29,733.34 | 25,968.21 |       |
| 307   | 29,797.11 | 25,973.62 |       |
| 308   | 29,605.20 | 26,380.86 |       |
| 312   | 29,138.16 | 26,467.05 |       |
| 322   | 29,486.77 | 26,107.07 |       |
| 323   | 29,485.18 | 26,049.09 |       |
| 324   | 27,411.02 | 25,860.53 |       |
| 325   | 28,857.59 | 26,506.87 |       |
| 326   | 29,581.59 | 25,775.72 |       |
| 327   | 29,581.53 | 25,717.72 |       |
| 328   | 28,617.63 | 26,699.88 |       |
| 329   | 28,538.87 | 26,635.77 |       |
| 330   | 29,673.07 | 25,399.33 |       |
| 331   | 29,673.12 | 25,457.33 |       |
| 332   | 28,361.39 | 26,635.29 |       |
| 333   | 28,168.19 | 26,506.60 |       |
| 334   | 28,159.70 | 26,377.36 |       |

| CONTROL POINTS |           |           |         |         |
|----------------|-----------|-----------|---------|---------|
| Point          | Northing  | Easting   | Elev.   | Desc    |
| 501            | 32,584.25 | 24,901.96 | 1366.70 | NWCOR   |
| 502            | 32,612.53 | 27,513.28 | 1325.61 | N1\ACOR |
| 503            | 29,999.21 | 30,061.99 | 1333.50 | E1\ACOR |
| 504            | 27,360.78 | 29,997.18 | 1338.20 | SECOR   |
| 505            | 27,353.64 | 24,880.59 | 1358.02 | SWCOR   |
| 506            | 29,939.11 | 24,878.07 | 1366.43 | W1\ACOR |
| 507            | 29,997.85 | 27,492.82 | 1334.18 | CTR     |
| 508            | 27,346.81 | 27,439.22 | 1333.41 | S1\ACOR |
| 600            | 27,336.68 | 26,119.57 | 1339.21 | R       |
| 601            | 27,364.65 | 28,223.19 | 1330.75 | R       |
| 602            | 29,803.90 | 30,075.28 | 1334.18 | N       |
| 603            | 29,939.45 | 24,908.10 | 1365.98 | AMPAS   |
| 606            | 29,999.06 | 30,022.07 | 1332.77 | ARM5    |
| 702            | 27,442.50 | 24,976.73 | 1358.33 | CP      |
| 710            | 32,566.65 | 26,958.64 | 1325.10 | CP      |
| 718            | 30,423.52 | 24,912.64 | 1365.69 | AMPAS   |
| 801            | 27,376.51 | 29,966.08 | 1338.36 | PK      |
| 802            | 27,442.50 | 24,976.73 | 1358.33 | CP      |
| 803            | 29,899.34 | 24,954.88 | 1364.55 | CP      |
| 804            | 30,073.40 | 27,453.20 | 1336.70 | CP      |
| 810            | 32,566.64 | 26,958.64 | 1325.10 | CP      |
| 811            | 32,473.94 | 26,206.49 | 1339.68 | 4BF     |
| 812            | 30,624.50 | 26,190.89 | 1351.93 | 4BF     |
| 813            | 30,569.47 | 26,223.82 | 1353.88 | CP      |
| 815            | 31,305.15 | 27,502.90 | 1331.34 | 4BF     |
| 816            | 30,731.98 | 27,498.38 | 1330.43 | 4BF     |
| 817            | 30,351.39 | 24,911.86 | 1364.84 | 4BF     |
| 822            | 27,390.46 | 30,036.25 | 1336.08 | BMCOW   |
| 843            | 30,634.08 | 24,962.62 | 1368.48 | N       |
| 845            | 27,365.81 | 28,315.31 | 1334.40 | BMCOW   |

| WTR POINTS |           |           |             |
|------------|-----------|-----------|-------------|
| Point #    | Northing  | Easting   | Description |
| 6001       | 27,916.87 | 26,161.79 | 0+00        |
| 6002       | 27,916.32 | 26,125.29 | PT          |
| 6003       | 27,916.53 | 26,048.10 | TEE-PVI     |
| 6004       | 27,916.66 | 25,999.10 | TEE-PVI     |
| 6005       | 27,916.81 | 25,941.22 | PC          |
| 6006       | 27,940.77 | 25,840.54 | PVI         |
| 6007       | 28,013.61 | 25,756.39 | TEE-PVI     |
| 6008       | 28,142.59 | 25,715.82 | PT          |
| 6010       | 28,268.50 | 25,715.70 | VLV         |
| 6011       | 28,288.50 | 25,715.68 | BO          |
| 6012       | 27,958.53 | 26,048.22 | PVI         |
| 6013       | 27,974.53 | 26,048.26 | PC          |
| 6014       | 27,991.52 | 26,048.75 | PVI         |
| 6015       | 28,047.06 | 26,056.68 | PRC         |
| 6016       | 28,179.24 | 26,071.79 | PT          |
| 6017       | 28,199.75 | 26,071.77 | VLV-PVI     |
| 6018       | 28,259.80 | 26,071.71 | BO          |
| 6019       | 27,754.66 | 25,998.67 | FH-PVI      |
| 6020       | 27,613.84 | 25,998.30 | BEND        |
| 6021       | 27,597.16 | 25,981.53 | BEND        |
| 6022       | 27,564.25 | 25,981.44 | BEND-PVI    |
| 6023       | 27,537.29 | 26,008.25 | BEND-PVI    |
| 6024       | 27,537.23 | 26,033.94 | BEND-PVI    |
| 6025       | 27,564.03 | 26,060.89 | BEND-PVI    |
| 6026       | 27,602.93 | 26,060.99 | BO          |
| 6027       | 27,971.91 | 25,707.93 | BEND        |
| 6028       | 27,940.58 | 25,687.34 | BEND        |
| 6029       | 27,904.52 | 25,677.05 | BEND-PVI    |
| 6030       | 27,827.17 | 25,677.13 | FH-PVI      |
| 6031       | 27,614.61 | 25,677.34 | BEND-PVI    |
| 6032       | 27,597.87 | 25,660.62 | BEND        |
| 6033       | 27,564.96 | 25,660.66 | BEND        |
| 6034       | 27,541.71 | 25,683.95 | BEND        |
| 6035       | 27,541.75 | 25,722.14 | BEND        |
| 6036       | 27,559.76 | 25,740.12 | BEND        |
| 6037       | 27,590.25 | 25,740.09 | BO          |



**BAUGHMAN COMPANY**  
 315 Ellis St.  
 Wichita, KS 67211  
 316-262-7271  
 BaughmanCo.com

TURKEY CREEK 4TH  
 ADDITION - PHASE III

**COORDINATES**

WATER DISTRIBUTION  
 SYSTEM

PROJECT NUMBER:  
 448-2020-016828

DESIGN: DMV DRAWN: JAK  
 DATE: June 26, 2023

SHEET OF  
**16 17**

File: E:\Projects\Turkey Creek 4th Addition\Engineering\Phase 3\WTR\_22-06-E215\WTR\_22-06-E215.dwg