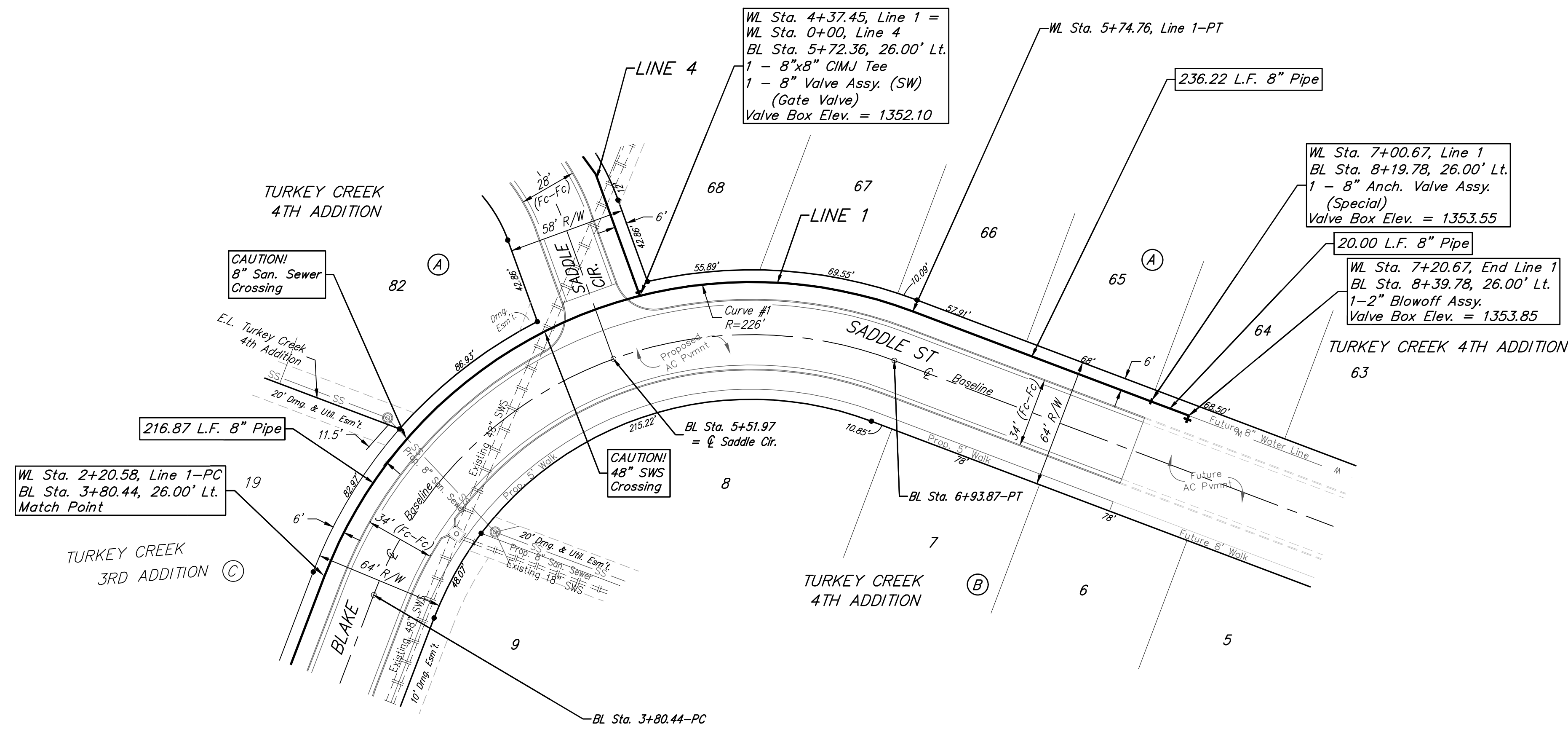


BENCHMARKS:
 RR spike in asphalt, SW Cor.,
 N1/2, SW1/4, Sec. 34, TWP. 26-S,
 R-2-E.
 Elev. = 1400.59 NAVD

RR spike in E. face of power pole,
 174± N. of S. line, N1/2, SW1/4
 & 49± E. of W. line, SW1/4, SEC.
 34, TWP. 26-S, R-2-E.
 Elev. = 1398.64 NAVD88

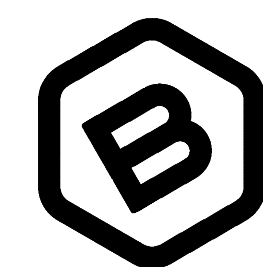
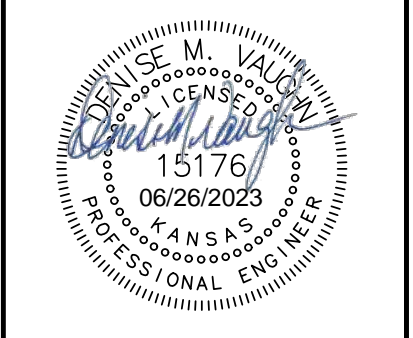
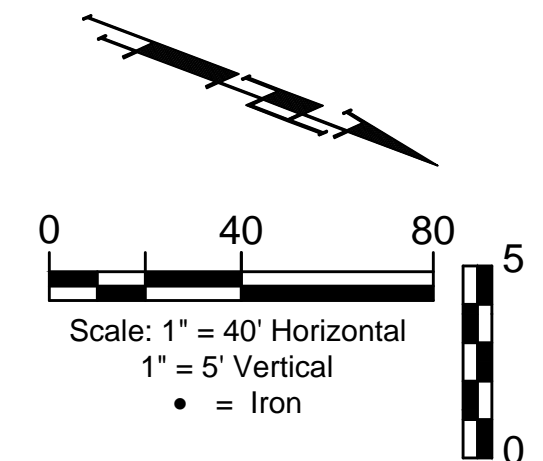
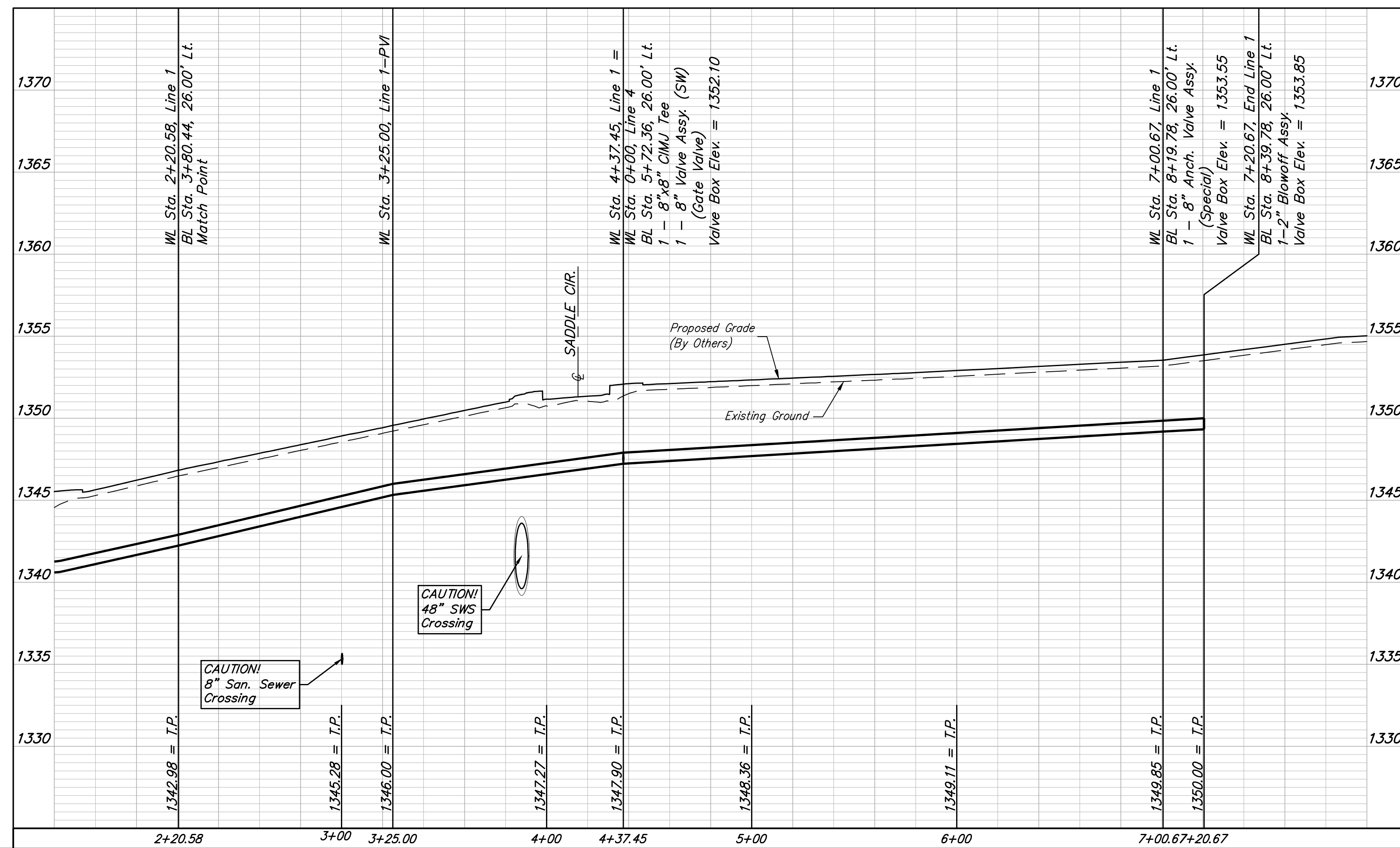
RR spike in S. face of power pole,
 294± S. of N. line, SW1/4, &
 48± E. of W. line, SW1/4, SEC.
 34, TWP. 26-S, R-2-E.
 Elev. = 1386.14 NAVD88



Curve #1
 Curve Data Based on Centerline of Pipe
 Rad. = 226' Delta = 89°47'29" Tangent = 225.18'
 Arc = 354.18' L.C. = 319.03' Def./Ft. = 7.60557 Min.

Station	Arc	Chord Lengths	8' Left	Defl.	Total Defl.
2+20.58	-	-	-	0'00'00"	0'00'00"
2+25.00	4.42'	4.58'	0'33'37"	0'33'37"	0'33'37"
2+50.00	25.00'	25.87'	3'10'08"	3'43'45"	3'43'45"
2+75.00	25.00'	25.87'	3'10'09"	6'53'54"	6'53'54"
3+00.00	25.00'	25.87'	3'10'08"	10'04'02"	10'04'02"
3+25.00	25.00'	25.87'	3'10'08"	13'14'10"	13'14'10"
3+50.00	25.00'	25.87'	3'10'09"	16'24'19"	16'24'19"
3+75.00	25.00'	25.87'	3'10'08"	19'34'27"	19'34'27"
4+00.00	25.00'	25.87'	3'10'09"	22'44'36"	22'44'36"
4+25.00	25.00'	25.87'	3'10'08"	25'54'44"	25'54'44"
4+37.45	12.45'	12.89'	1'34'41"	27'29'25"	27'29'25"
4+50.00	12.55'	12.99'	1'35'27"	29'04'52"	29'04'52"
4+75.00	25.00'	25.87'	3'10'09"	32'15'01"	32'15'01"
5+00.00	25.00'	25.87'	3'10'08"	35'25'09"	35'25'09"
5+25.00	25.00'	25.87'	3'10'08"	38'35'17"	38'35'17"
5+50.00	25.00'	25.87'	3'10'09"	41'45'26"	41'45'26"
5+74.76	24.76'	25.62'	3'08'19"	44'53'45"	44'53'45"

Baseline = ϕ Blake



**BAUGHMAN
 COMPANY**

315 Ellis St.
 Wichita, KS 67211
 316-262-7271
 BaughmanCo.com

TURKEY CREEK 4TH
 ADDITION - PHASE III

LINE 1

WATER DISTRIBUTION
 SYSTEM

PROJECT NUMBER:
 448-2020-016828

DESIGN: DMV DRAWN: JAK

DATE: June 26, 2023

SHEET OF
 5 17