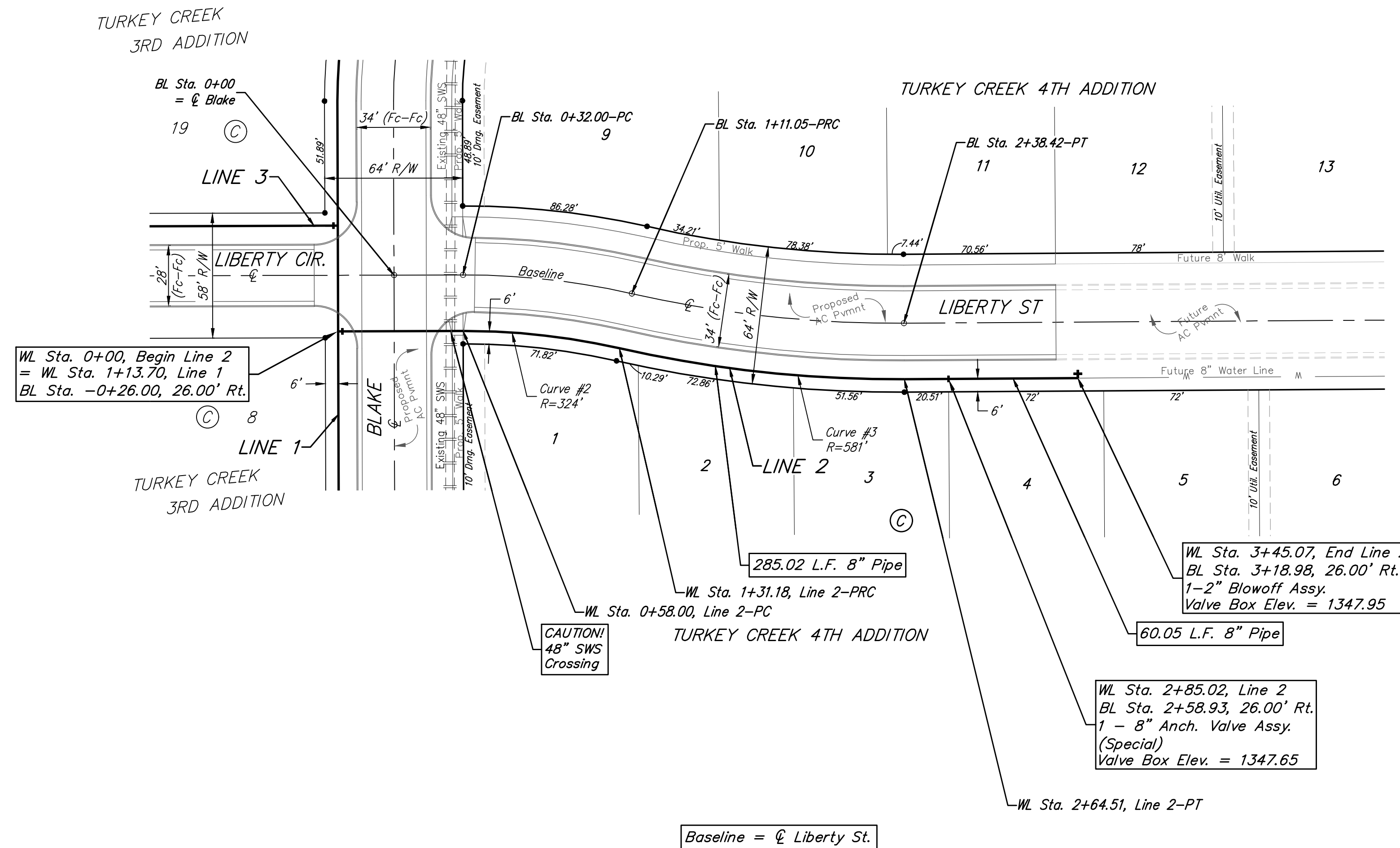


**BENCHMARKS:**  
 RR spike in asphalt, SW Cor.,  
 N1/2, SW1/4, Sec. 34, TWP. 26-S,  
 R-2-E.  
 Elev. = 1400.59 NAVD

RR spike in E. face of power pole,  
 174± N. of S. line, N1/2, SW1/4  
 & 49± E. of W. line, SW1/4, SEC.  
 34, TWP. 26-S, R-2-E.  
 Elev. = 1398.64 NAVD88

RR spike in S. face of power pole,  
 294± S. of N. line, SW1/4, &  
 48± E. of W. line, SW1/4, SEC. 34,  
 TWP. 26-S, R-2-E.  
 Elev. = 1386.14 NAVD88



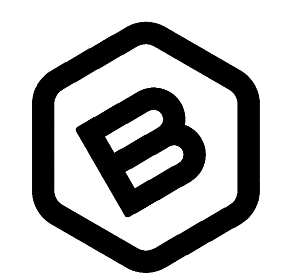
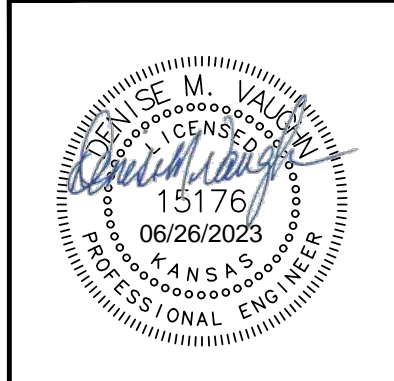
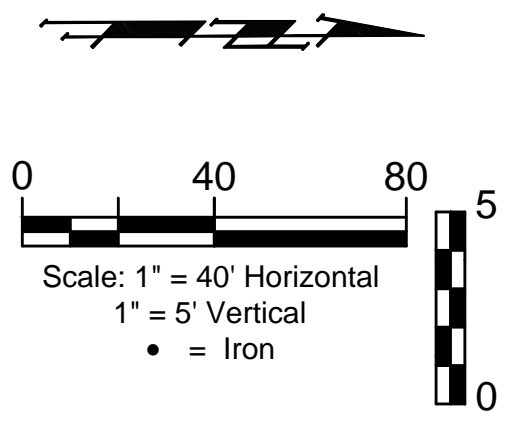
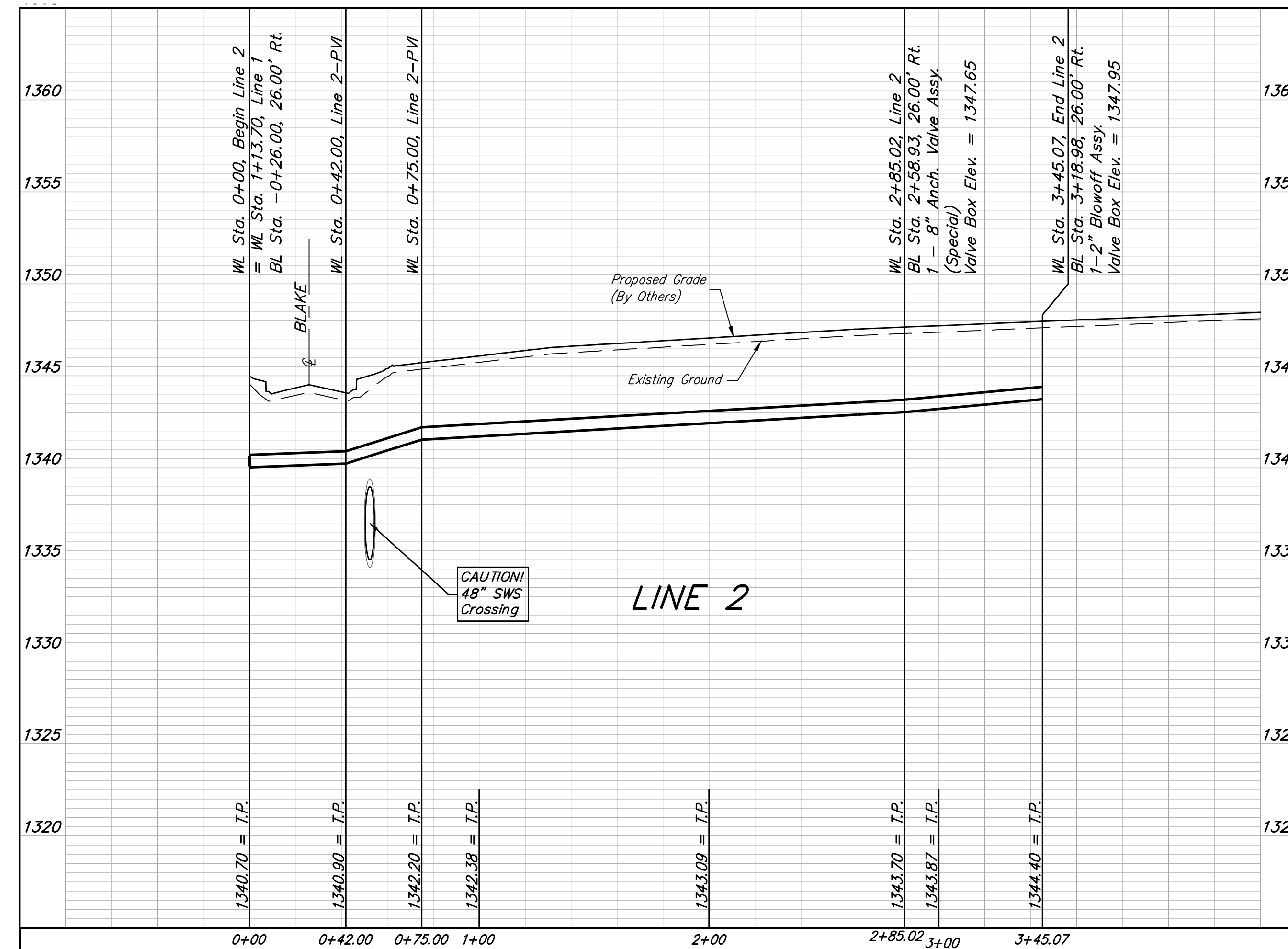
Curve #2  
 Curve Data Based on Centerline of Pipe  
 Rad. = 324' Delta = 125°26' Tangent = 36.74'  
 Arc = 73.18' L.C. = 73.02' Def./Ft. = 5.30496 Min.

Station	Arc	Chord Lengths		Total Defl.
		8' Right	Defl.	
0+58.00	-	-	0'00'00"	0'00'00"
0+75.00	17.00'	16.58'	1'30'11"	1'30'11"
1+00.00	25.00'	24.38'	2'12'37"	3'42'48"
1+25.00	25.00'	24.38'	2'12'38"	5'55'26"
1+31.18	6.18'	6.03'	0'32'47"	6'28'13"

Curve #3  
 Curve Data Based on Centerline of Pipe  
 Rad. = 581' Delta = 130°57' Tangent = 66.96'  
 Arc = 133.33' L.C. = 133.04' Def./Ft. = 2.95864 Min.

Station	Arc	Chord Lengths		Total Defl.
		8' Right	Defl.	
1+31.18	-	-	0'00'00"	0'00'00"
1+50.00	18.82'	19.08'	0'55'41"	0'55'41"
1+75.00	25.00'	25.34'	1'13'58"	2'09'39"
2+00.00	25.00'	25.34'	1'13'58"	3'23'37"
2+25.00	25.00'	25.34'	1'13'58"	4'37'35"
2+50.00	25.00'	25.34'	1'13'58"	5'51'33"
2+64.51	14.51'	14.71'	0'42'55"	6'34'28"

Baseline =  $\phi$  Liberty St.



**BAUGHMAN COMPANY**  
 315 Ellis St.  
 Wichita, KS 67211  
 316-262-7271  
 BaughmanCo.com

TURKEY CREEK 4TH  
 ADDITION - PHASE III  
**LINE 2**  
 WATER DISTRIBUTION  
 SYSTEM

PROJECT NUMBER:  
 448-2020-016828  
 DESIGN: DMV DRAWN: JAK  
 DATE: June 26, 2023  
 SHEET 6 OF 17

File: E:\Projects\Turkey Creek 4th Engineering\Phase 3\WTR\_22-06-E215WTR\_22-06-E215.dwg