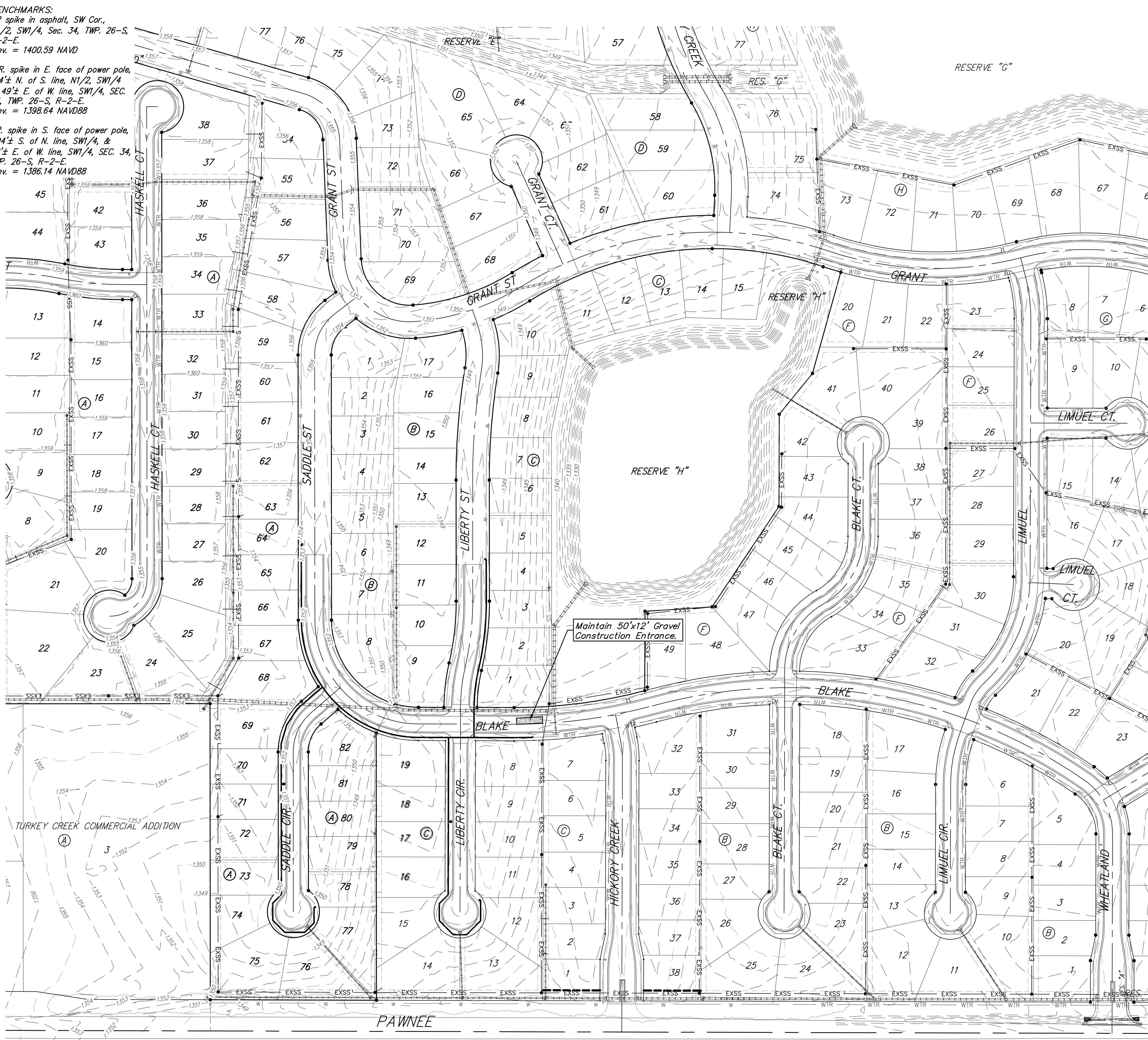


BENCHMARKS:
 RR spike in asphalt, SW Cor.,
 N1/2, SW1/4, Sec. 34, TWP. 26-S,
 R-2-E.
 Elev. = 1400.59 NAVD

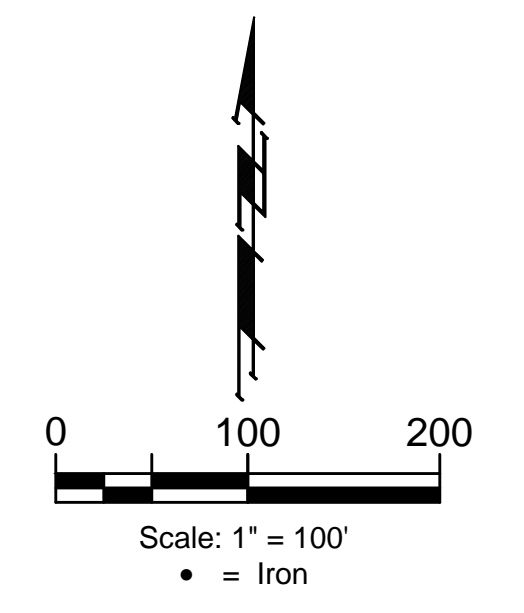
RR spike in E. face of power pole,
 174± N. of S. line, N1/2, SW1/4
 & 49± E. of W. line, SW1/4, SEC.
 34, TWP. 26-S, R-2-E.
 Elev. = 1398.64 NAVD88

RR spike in S. face of power pole,
 294± S. of N. line, SW1/4, &
 48± E. of W. line, SW1/4, SEC. 34,
 TWP. 26-S, R-2-E.
 Elev. = 1386.14 NAVD88

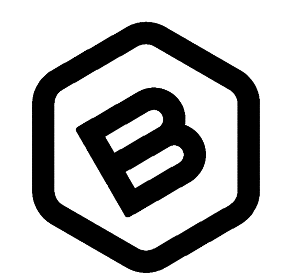
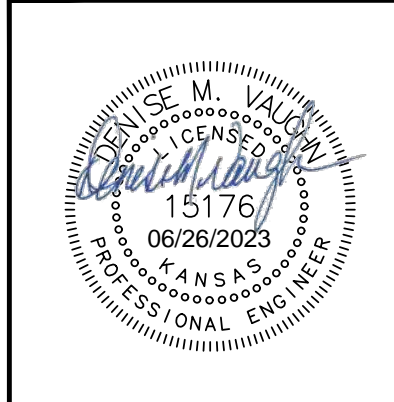


EROSION CONTROL MEASURE	INSTALL	MAINTAIN
CONSTRUCTION ENTRANCE (EA)	0	1

* ALL EXISTING BMPs INCLUDING CONSTRUCTION ENTRANCE, SEDIMENT BARRIERS, SILT FENCE, CUT-OFF TRENCH, AND EROSION CONTROL MAT SHALL BE MAINTAINED AND REPAIRED IF NECESSARY.



- NOTES:**
- Contractor shall make sure all erosion control is in place before project is accepted. This plan represents the minimum standard. Any additional erosion control measures shall be installed by the Contractor as needed.
 - All areas disturbed during construction shall be seeded, mulched, and fertilized as per Cover Sheet General Notes.



BAUGHMAN COMPANY
 315 Ellis St.
 Wichita, KS 67211
 316-262-7271
 BaughmanCo.com

TURKEY CREEK 4TH
 ADDITION - PHASE III
EROSION CONTROL

WATER DISTRIBUTION SYSTEM
 PROJECT NUMBER:
 448-2020-016828
 DESIGN: DMV DRAWN: JAK
 DATE: June 26, 2023
 SHEET 9 OF 17

File: E:\Projects\Turkey Creek 4th Addition\Phase 3\WTR_22-06-E215\WTR_22-06-E215.dwg