

SANITARY SEWER IMPROVEMENTS

to serve

TURKEY CREEK 4TH ADDITION - PHASE III

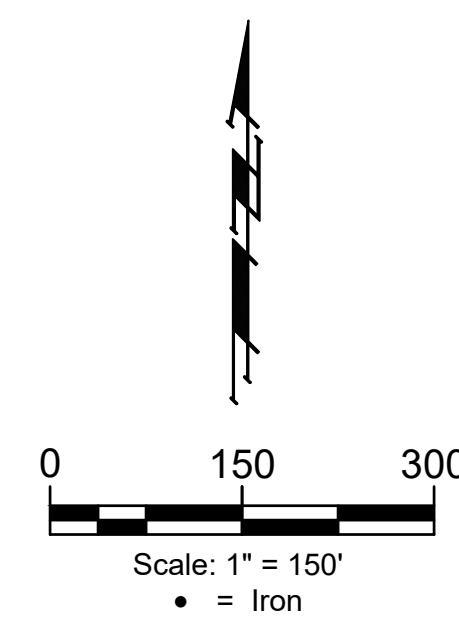
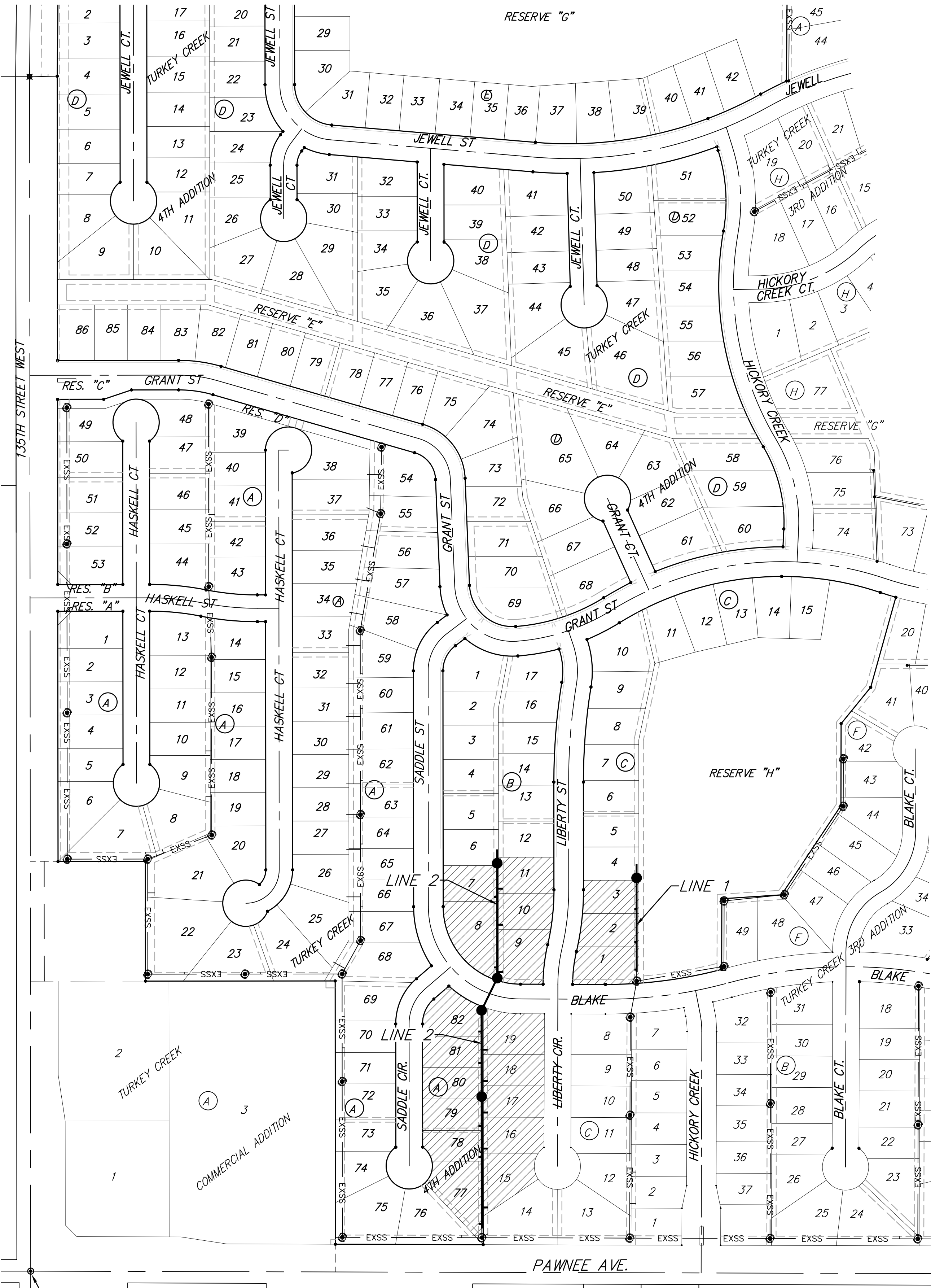
CITY OF WICHITA, KANSAS

Paul Gunzelman, P.E. Interim City Engineer

Project Number 468-2020-016815

Org Code Number 47267722

Munis Number E2107



SHEET INDEX

Title Sheet	1
Line 1	2
Line 2	3-4
Erosion Control Plan	5
Erosion Control BMP Details	6-10
Precast Manhole Detail	11
Frame & Cover Detail	12
Vertical Riser Detail	13
Coordinate Sheet	14-15
Copy of Plat	16

GENERAL NOTES:

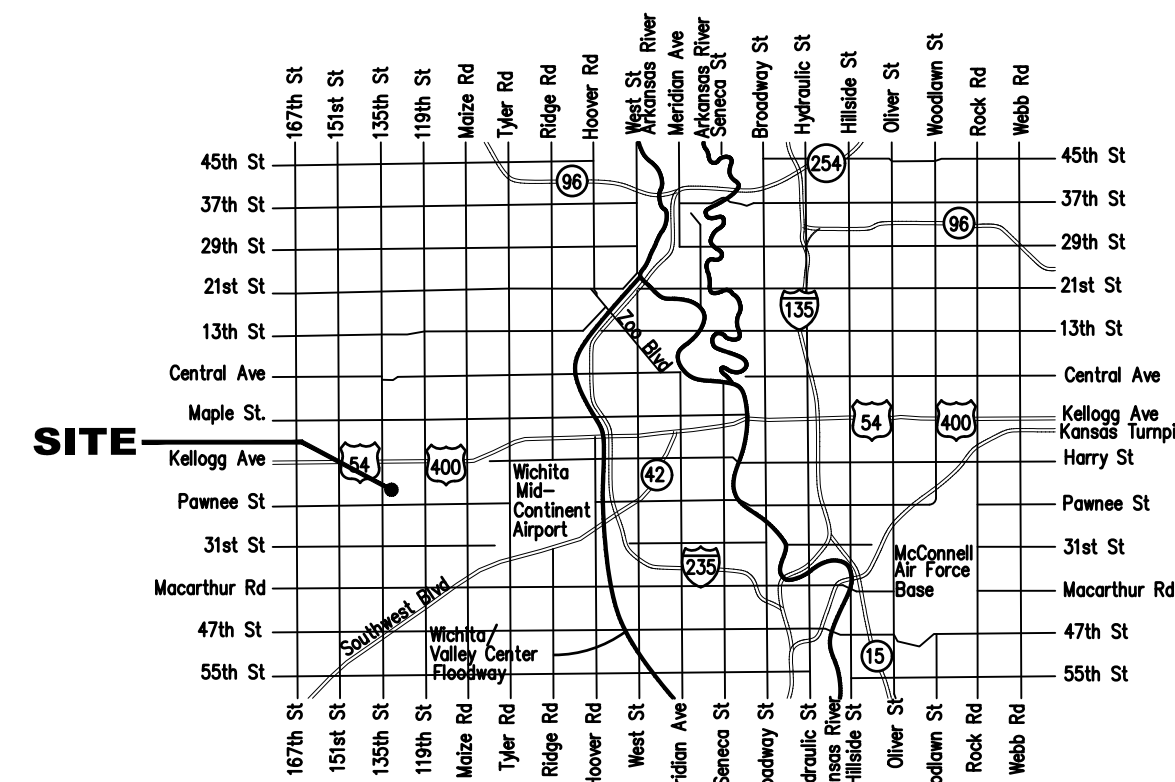
- Contractor will be required to provide notice to utility companies a minimum of seventy-two (72) hours prior to any excavation, as follows:

Kansas One-Call	687-2470
-----------------	----------

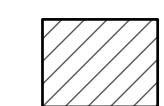
The Contractor must notify the following in case of an emergency:

Cox Communications	262-4270
Kansas Gas Service	1-888-482-4950
Westar Energy	383-8650
Aquila Energy	1-800-303-0357
AT&T	268-2245
City of Wichita Water Dept.	268-4563
City of Wichita Sewer Maint.	268-4024
City of Wichita Storm Sewer Maint.	268-4090
City of Wichita Traffic Maint.	268-4034
Conoco Phillips Pipeline Co.	1-877-267-2290
Southern Star Pipeline Co.	529-6600
Kinder-Morgan Pipeline Co.	1-888-844-5658
- Utility service lines, poles, valve boxes, meters, and etcetera are to be adjusted as necessary by others prior to construction unless the plans specifically call for their adjustment by the Contractor or unless the plans specifically identify a utility to be adjusted by its owner during construction. Existing utilities and their location, as shown on the plans, represent the best information obtainable for design. The Contractor will be required to work around existing utilities within the right-of-way which do not conflict with proposed construction.
- Rubble from the removal of miscellaneous structures and excess excavation which is to be wasted shall be disposed of on sites to be provided by the Contractor. These sites shall be approved by the Engineer as to suitability, appearance and site location. Locations, in the opinion of the Engineer, that will leave an unsightly appearance will not be approved. All disposal sites must be approved by the Kansas Department of Health and Environment. Material either stockpiled or disposed of in a flood plain would require a Kansas State Board of Agriculture permit. Any material dumped in waters of the United States or wetlands is subject to U.S. Corps. of Engineers permitting regulations. Any material buried or stockpiled beyond approved construction limits would require additional archaeological investigations unless buried in a previously approved borrow location.
- Trees and shrubs in public right-of-way which are in direct conflict with proposed new construction shall be removed by the Contractor with the Engineer's approval. Trees and shrubs which are not in direct conflict with proposed new construction shall be saved and protected from damage.
- The Contractor shall give all property owners and/or tenants of developed property abutting the construction of this project a minimum of ten (10) days notice prior to start of construction.
- The Contractor shall be responsible for preserving property irons. The Contractor will be required to re-establish any property irons which are damaged or destroyed by his construction operations. Such irons shall be re-established by a licensed land surveyor in accordance with state laws.
- All existing and proposed erosion control measures including silt fencing, erosion control mat, straw bales, inlet barriers, and const. entrance shall be maintained throughout construction by the contractor and until project is accepted by the City of Wichita. The on-site engineer shall complete weekly reports on the status of erosion control measures. The contractor shall be required to comply with maintenance and/or replacement of erosion control measures as determined by the on-site engineer until project is accepted by City of Wichita. Maintenance and/or replacement of erosion control measures to be paid by L.S. bid item "Maintain Existing BMP's."
- All excess excavation shall be removed from the site by the Contractor. Cost shall be included in "Site Clearing and Restoration" lump sum bid item.
- The Contractor shall be responsible for maintaining continuous flow of sewage through construction. Contractor's proposed method for maintaining sewage flow shall be approved by the Engineer. Cost of maintaining flow of sewage through construction will not be paid for directly and this cost shall be considered as subsidiary to the other pay items of work.
- All areas disturbed by construction are to be temporary seeded as follows:
Seed --- Rye grass; 5 lbs./1000 Sq. Ft.

All costs associated with seeding including mobilization, preparation of ground, seeding, etc. shall be included in the L.S. bid item "Seeding".
- Trees and shrubs in the work area which are in direct conflict with proposed new construction shall be removed by the Contractor only as necessary for construction. Trees and shrubs which are not in direct conflict with proposed new construction shall be saved and protected from damage. If trimming is necessary, a chainsaw shall be used. Breaking limbs with equipment will not be allowed.
- The Developer for this project is Paul Kelsey
716 N. 119th St. #112, Wichita, KS 67212
PH# (316)722-1077 email paul.kelsey@gmail.com



BENEFIT DISTRICT



BAUGHMAN COMPANY
315 Ellis St. Wichita, KS 67211 316-262-7271
BaughmanCo.com



June 3, 2022

E:\Projects\Turkey Creek 4th Addition\Phase 3\SS 22-06-E216\SS 22-06-E216.dwg