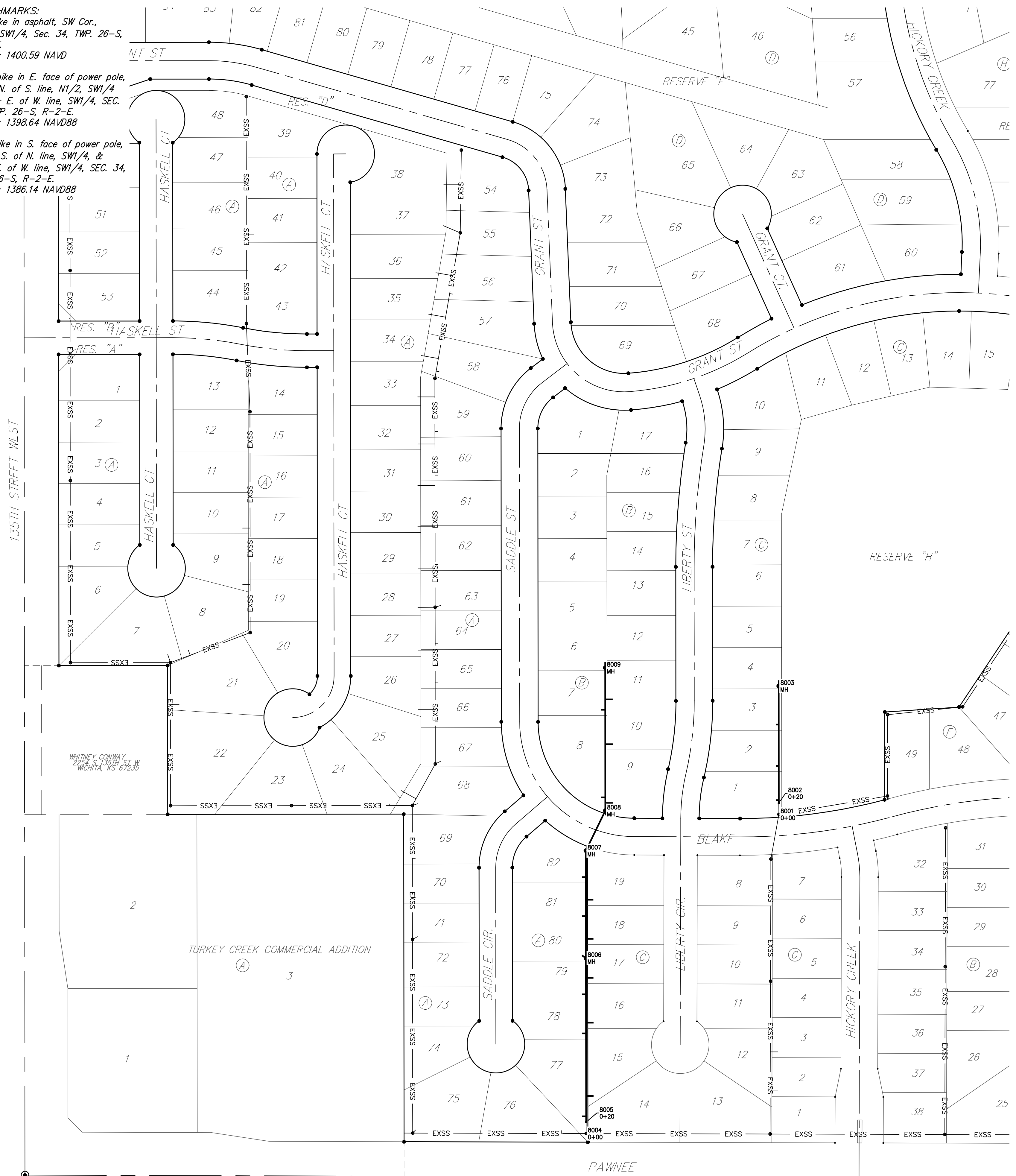


**BENCHMARKS:**  
 RR spike in asphalt, SW Cor.,  
 N1/2, SW1/4, Sec. 34, TWP. 26-S,  
 R-2-E.  
 Elev. = 1400.59 NAVD

RR spike in E. face of power pole,  
 174± N. of S. line, N1/2, SW1/4  
 & 49± E. of W. line, SW1/4, SEC.  
 34, TWP. 26-S, R-2-E.  
 Elev. = 1398.64 NAVD88

RR spike in S. face of power pole,  
 294± S. of N. line, SW1/4, &  
 48± E. of W. line, SW1/4, SEC. 34,  
 TWP. 26-S, R-2-E.  
 Elev. = 1386.14 NAVD88



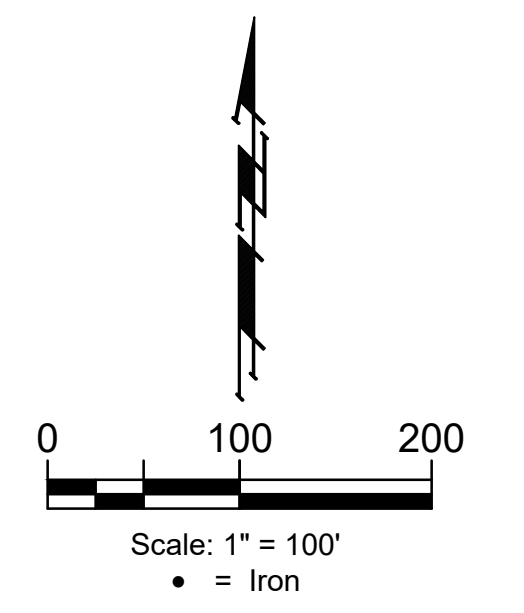
IRONS		
Point	Northing	Eastng
5	27,409.65	26,374.75
6	27,409.88	26,290.75
7	27,411.88	25,540.53
8	27,981.91	25,539.98
9	27,981.51	25,129.18
10	28,240.67	25,128.92
11	28,240.49	24,939.72
14	29,940.46	24,938.07
15	30,213.73	24,940.55
16	30,277.72	24,941.13
17	30,421.04	24,942.43
18	30,395.11	25,231.07
19	30,610.28	25,233.01
20	30,524.78	26,190.13
21	30,499.70	26,189.92
22	30,485.79	26,345.67
71	28,006.87	26,376.95
72	27,974.32	26,125.45
73	27,910.32	26,125.28
74	27,974.51	26,054.26
75	27,974.68	25,990.26
76	27,910.67	25,993.09
77	27,910.52	26,051.09
80	27,910.81	25,941.20
81	27,974.81	25,941.37
82	27,970.70	25,786.25
83	28,014.66	25,748.42
84	27,986.71	25,715.93
85	27,942.74	25,753.76
86	27,888.80	25,671.07
87	27,888.85	25,729.07
88	27,622.15	25,671.33
89	27,622.21	25,729.33
90	28,142.58	25,709.82
91	28,142.65	25,773.82
92	30,212.52	25,073.80
93	30,212.00	25,131.80
94	30,210.29	25,320.49
95	30,274.29	25,321.06
96	30,271.74	25,345.71
97	30,290.96	25,354.26
139	30,475.38	26,521.52
140	29,929.91	26,517.25
141	29,901.66	26,461.55
144	30,248.17	25,398.71
145	29,848.82	26,347.31
146	30,267.38	25,407.25
147	29,787.72	26,366.65
148	29,779.67	26,369.20
150	29,731.65	26,100.33
151	29,730.05	26,042.35
152	29,749.70	25,775.56
153	29,754.62	25,717.56
154	30,319.17	25,360.39
155	30,335.13	25,360.53
156	30,318.65	25,418.38
157	30,334.60	25,418.53
158	30,384.94	25,474.06
159	30,442.71	25,479.22
160	30,363.75	26,363.22

IRONS		
Point	Northing	Eastng
161	30,310.67	26,305.50
162	29,747.64	25,399.26
163	29,747.70	25,457.26
164	29,813.57	25,421.38
165	29,820.82	25,426.86
166	29,922.08	25,388.09
167	29,922.15	25,452.09
168	29,710.86	25,074.29
169	29,710.92	25,132.29
170	29,778.55	25,467.61
171	29,785.79	25,473.09
185	28,883.51	26,740.78
186	28,822.84	26,720.40
187	28,918.61	26,573.78
188	28,921.58	26,509.85
189	28,960.37	26,511.65
190	28,957.39	26,575.59
191	29,770.78	25,527.23
192	29,834.55	25,532.64
193	30,142.36	25,387.87
194	30,142.43	25,451.87
195	28,868.09	26,233.08
196	28,844.22	26,180.23
197	28,811.46	26,121.63
198	28,757.09	26,155.39
199	28,721.09	26,085.33
200	28,700.51	26,024.73
201	29,325.00	24,938.67
202	29,241.00	24,938.75
203	29,241.09	25,038.75
204	29,261.15	25,098.73
205	29,325.25	25,200.87
206	29,261.25	25,200.94
207	29,250.82	25,275.24
208	29,312.33	25,292.93
209	29,130.90	25,388.86
210	29,081.60	25,446.91
211	28,840.13	25,080.14
212	28,840.19	25,138.14
219	28,782.13	25,080.20
220	28,782.00	24,939.20
221	28,782.19	25,138.20
222	28,840.00	24,939.14
223	28,828.31	25,260.40
224	28,771.41	25,249.19
225	28,817.53	25,371.39
226	28,817.55	25,389.16
227	28,450.52	25,080.52
228	28,450.58	25,138.52
229	28,759.53	25,371.45
230	28,759.55	25,389.22
231	28,222.36	25,389.74
232	28,190.53	25,375.84
233	28,132.55	25,393.36
234	28,222.42	25,447.74
235	28,653.07	25,709.32
236	28,653.14	25,773.32
237	28,758.16	25,761.27
238	28,707.27	25,800.08
239	28,723.24	25,821.02

IRONS			
Point	Northing	Eastng	Elev.
240	28,774.13	25,782.20	
241	28,749.17	25,930.83	
242	28,685.35	25,935.65	
243	28,060.20	26,000.19	
244	28,045.70	26,062.52	
245	28,179.19	26,013.79	
246	28,179.25	26,077.79	
247	28,412.28	26,013.56	
248	28,412.34	26,077.56	
249	28,628.34	26,030.79	
250	28,618.13	26,093.97	
251	28,977.36	26,120.08	
252	29,001.24	26,172.94	
253	28,835.42	25,766.95	
254	28,838.06	25,830.90	
302	29,067.36	25,757.36	
303	29,070.01	25,821.31	
304	29,125.31	25,711.82	
305	29,186.82	25,729.51	
306	29,733.34	25,968.21	
307	29,797.11	25,973.62	
308	29,605.20	26,380.86	
312	29,138.16	26,467.05	
322	29,486.77	26,107.07	
323	29,485.18	26,049.09	
324	27,411.02	25,860.53	
325	28,857.59	26,506.87	
326	29,581.59	25,775.72	
327	29,581.53	25,717.72	
328	28,617.63	26,699.88	
329	28,538.87	26,635.77	
330	29,673.07	25,399.33	
331	29,673.12	25,457.33	
332	28,361.39	26,635.29	
333	28,168.19	26,506.60	
334	28,159.70	26,377.36	

CONTROL POINTS				
Point	Northing	Eastng	Elev.	Desc
501	32,584.25	24,901.96	1366.70	NWCOR
502	32,612.53	27,513.28	1325.61	N1\4COR
503	29,999.21	30,061.99	1333.50	E1\4COR
504	27,360.78	29,997.18	1338.20	SECOR
505	27,353.64	24,880.59	1358.02	SWCOR
506	29,939.11	24,878.07	1366.43	W1\4COR
507	29,997.85	27,492.82	1334.18	CTR
508	27,346.81	27,439.22	1333.41	S1\4COR
600	27,336.68	26,119.57	1339.21	R
601	27,364.65	28,223.19	1330.75	R
602	29,803.90	30,075.28	1334.18	N
603	29,939.45	24,908.10	1365.98	AMPA5
606	29,999.06	30,022.07	1332.77	ARMS
702	27,442.50	24,976.73	1358.33	CP
710	32,566.65	26,958.64	1325.10	CP
718	30,423.52	24,932.64	1365.69	AMPA5
801	27,376.51	29,968.08	1338.36	PK
802	27,442.50	24,976.73	1358.33	CP
803	29,899.34	24,954.88	1364.55	CP
804	30,073.40	27,453.20	1336.70	CP
810	32,566.64	26,958.64	1325.10	CP
811	32,473.94	26,206.49	1339.68	4BF
812	30,624.50	26,190.89	1351.93	4BF
813	30,569.47	26,223.82	1353.88	CP
815	31,305.15	27,502.90	1331.34	4BF
816	30,731.98	27,498.38	1330.43	4BF
817	30,351.39	24,911.86	1364.84	4BF
822	27,390.46	30,036.25	1336.08	BMCOW
843	30,634.08	24,962.62	1368.48	N
845	27,365.81	28,315.31	1334.40	BMCOW

SS POINTS			
Point	Northing	Eastng	Desc
8001	27,981.51	26,192.98	O+00
8002	28,001.51	26,192.96	O+20
8003	28,204.87	26,192.76	MH
8004	27,426.03	25,857.52	O+00
8005	27,446.03	25,857.50	O+20
8006	27,731.36	25,857.22	MH
8007	27,918.28	25,857.04	MH
8008	27,987.94	25,890.97	MH
8009	28,236.61	25,890.73	MH





**BAUGHMAN COMPANY**

315 Ellis St.  
 Wichita, KS 67211  
 316-262-7271  
 BaughmanCo.com

TURKEY CREEK 4TH  
 ADDITION - PHASE III

**COORDINATES**

SANITARY SEWER  
 IMPROVEMENTS

PROJECT NUMBER:  
 468-2020-016815

DESIGN: DMV DRAWN: JAK

DATE: June 3, 2022

SHEET OF  
**15 16**

File: E:\Projects\Turkey Creek 4th Engineering\Phase 3\SS\_22-06-E216\SS\_22-06-E216.dwg