

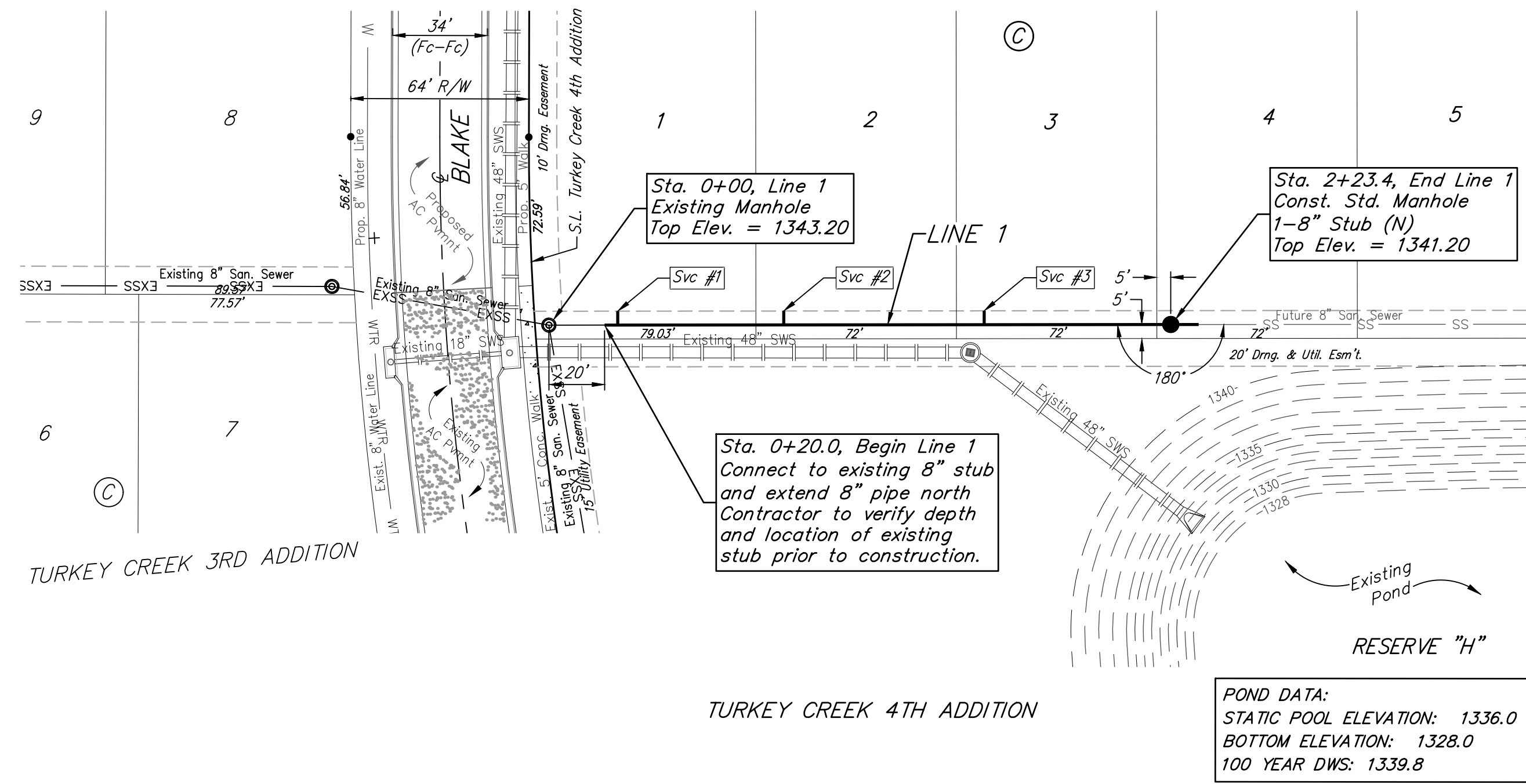
BENCHMARKS:
 RR spike in asphalt, SW Cor.,
 N1/2, SW1/4, Sec. 34, TWP. 26-S,
 R-2-E.
 Elev. = 1400.59 NAVD

RR spike in E. face of power pole,
 174± N. of S. line, N1/2, SW1/4
 & 49± E. of W. line, SW1/4, SEC.
 34, TWP. 26-S, R-2-E.
 Elev. = 1398.64 NAVD88

RR spike in S. face of power pole,
 294± S. of N. line, SW1/4, &
 48± E. of W. line, SW1/4, SEC. 34,
 TWP. 26-S, R-2-E.
 Elev. = 1386.14 NAVD88

TURKEY CREEK 3RD ADDITION

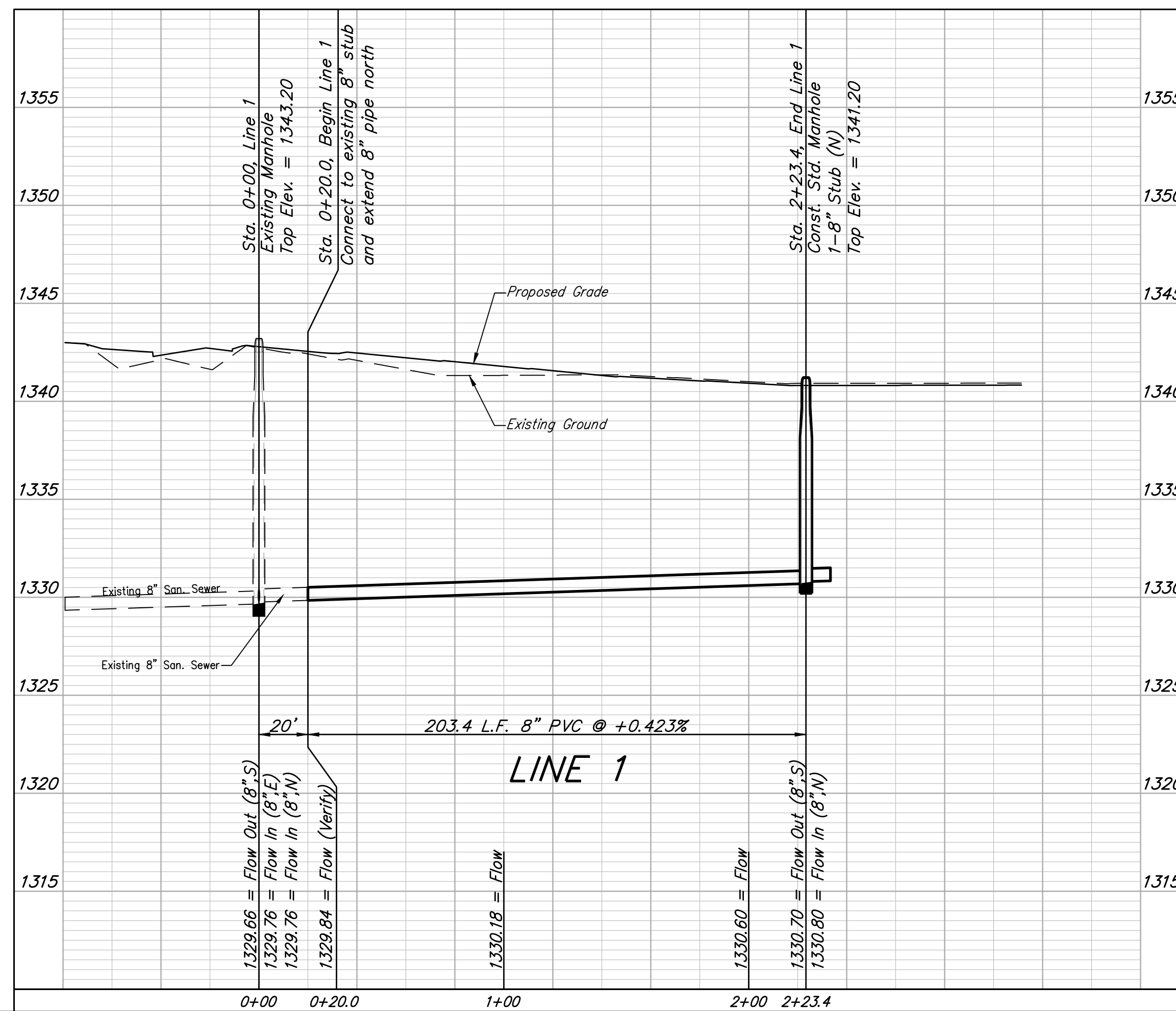
TURKEY CREEK 4TH ADDITION



SEWER SERVICE TABLE

NUMBER	TYPE	LOCATION				FOR INFORMATION ONLY	
		LOT NO.	BLOCK NO.	LINE NO.	STATION/DIRECTION	APPROXIMATE LENGTH 4" PIPE	
1	8" X 4" Tee	1	C	1	0+24.7/Lt.	9'	5'
2	8" X 4" Tee	2	C	1	0+84.3/Lt.	8'	5'
3	8" X 4" Tee	3	C	1	1+56.4/Lt.	7'	5'

POND DATA:
 STATIC POOL ELEVATION: 1336.0
 BOTTOM ELEVATION: 1328.0
 100 YEAR DWS: 1339.8



BAUGHMAN COMPANY
 315 Ellis St.
 Wichita, KS 67211
 316-262-7271
 BaughmanCo.com

TURKEY CREEK 4TH
 ADDITION - PHASE III

LINE 1

SANITARY SEWER
 IMPROVEMENTS

PROJECT NUMBER:
 468-2020-016815

DESIGN: DMV DRAWN: JAK

DATE: June 3, 2022

SHEET **2** OF **16**