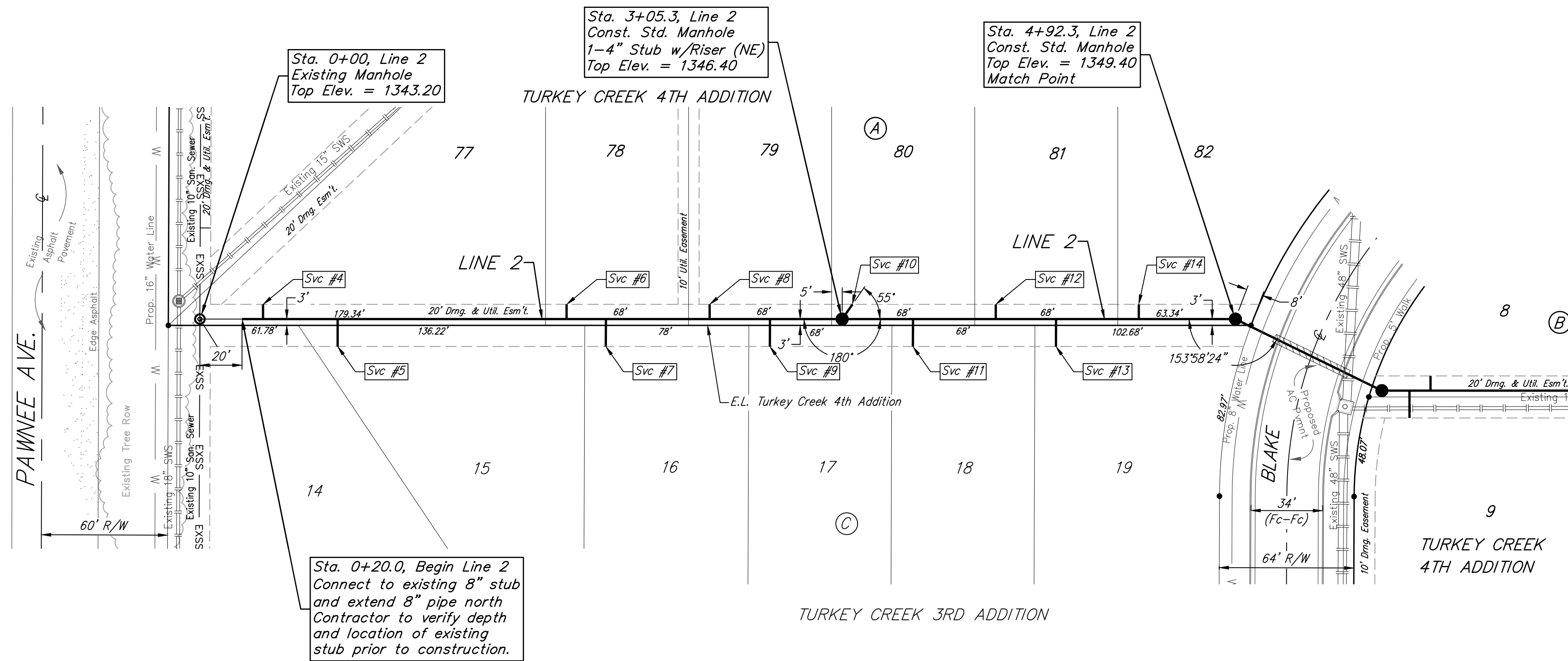
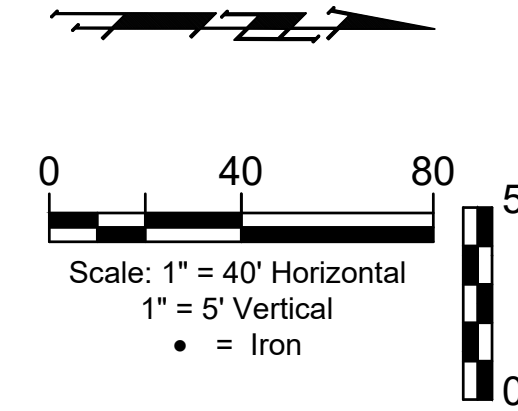


BENCHMARKS:
 RR spike in asphalt, SW Cor.,
 N1/2, SW1/4, Sec. 34, TWP. 26-S,
 R-2-E.
 Elev. = 1400.59 NAVD

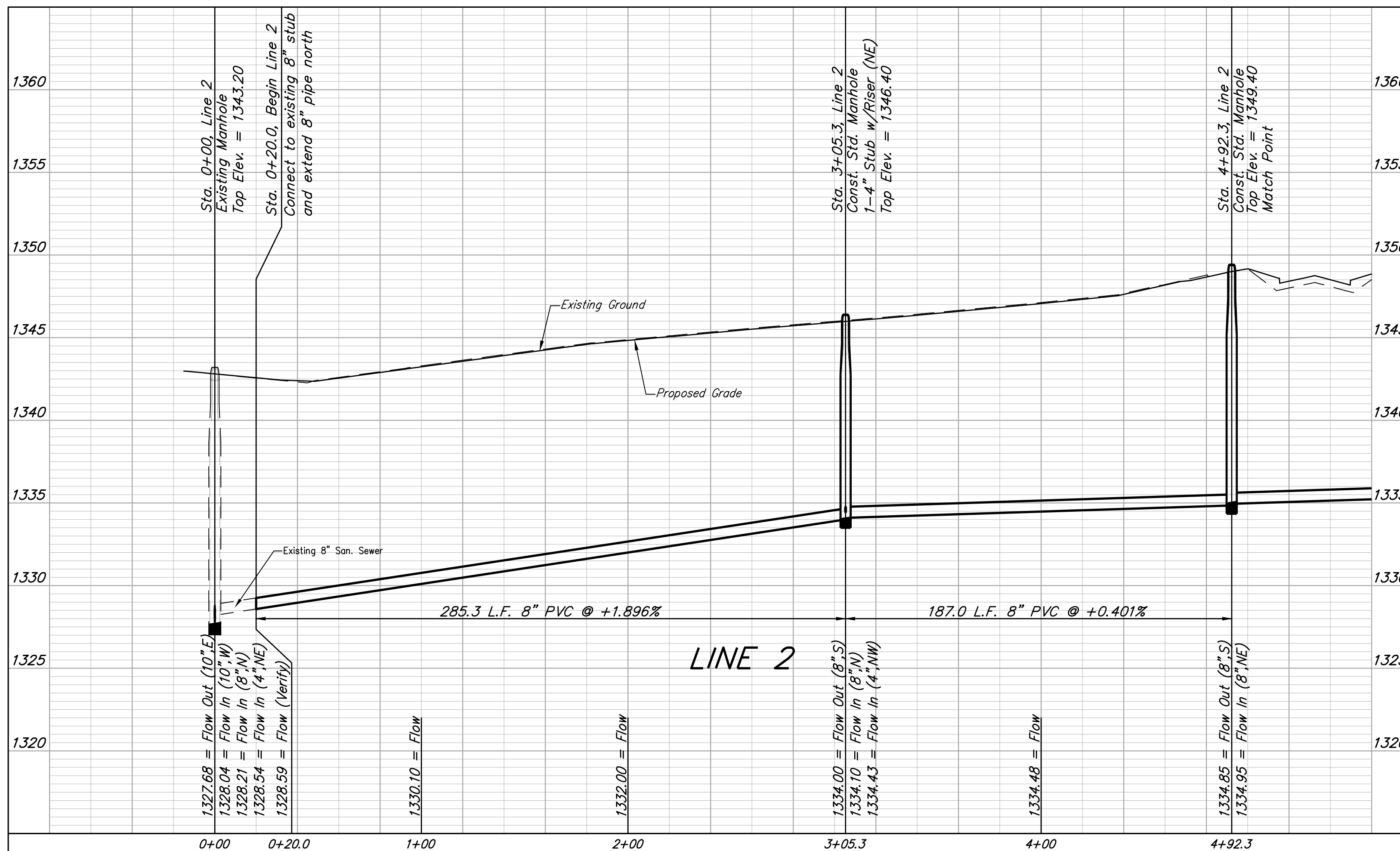
RR spike in E. face of power pole,
 174± N. of S. line, N1/2, SW1/4
 & 49± E. of W. line, SW1/4, SEC.
 34, TWP. 26-S, R-2-E.
 Elev. = 1398.64 NAVD88

RR spike in S. face of power pole,
 294± S. of N. line, SW1/4, &
 48± E. of W. line, SW1/4, SEC. 34,
 TWP. 26-S, R-2-E.
 Elev. = 1386.14 NAVD88



SEWER SERVICE TABLE

NUMBER	TYPE	LOCATION				FOR INFORMATION ONLY	
		LOT NO.	BLOCK NO.	LINE NO.	STATION/DIRECTION	APPROXIMATE LENGTH 4" PIPE	
						VERTICAL	HORIZONTAL
4	8" X 4" Tee	77	A	2	0+30.0/Lt.	9.7'	7'
5	8" X 4" Tee	15	C	2	0+65.5/Rt.	9'	13'
6	8" X 4" Tee	78	A	2	1+74.3/Lt.	9'	7'
7	8" X 4" Tee	16	C	2	1+93.0/Rt.	8.6'	13'
8	8" X 4" Tee	79	A	2	2+42.3/Lt.	8.5'	7'
9	8" X 4" Tee	17	C	2	2+71.0/Rt.	8.1'	13'
10	4" Stub w/ Riser	80	A	2	3+05.3/Lt.	7.7'	7'
11	8" X 4" Tee	18	C	2	3+39.0/Rt.	7.9'	13'
12	8" X 4" Tee	81	A	2	3+78.3/Lt.	8.4'	7'
13	8" X 4" Tee	19	C	2	4+07.0/Rt.	8.2'	13'
14	8" X 4" Tee	82	C	2	4+46.3/Lt.	9.2'	7'



BAUGHMAN COMPANY
 315 Ellis St.
 Wichita, KS 67211
 316-262-7271
 BaughmanCo.com

TURKEY CREEK 4TH ADDITION - PHASE III

LINE 2

SANITARY SEWER IMPROVEMENTS

PROJECT NUMBER:
 468-2020-016815

DESIGN: DMV DRAWN: JAK
 DATE: June 3, 2022

SHEET OF
3 16

File: E:\Projects\Turkey Creek 4th...Engineering\Phase 3\SS_22-06-E216\SS_22-06-E216.dwg