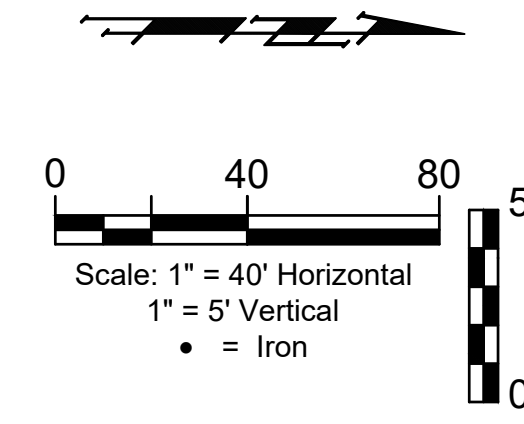
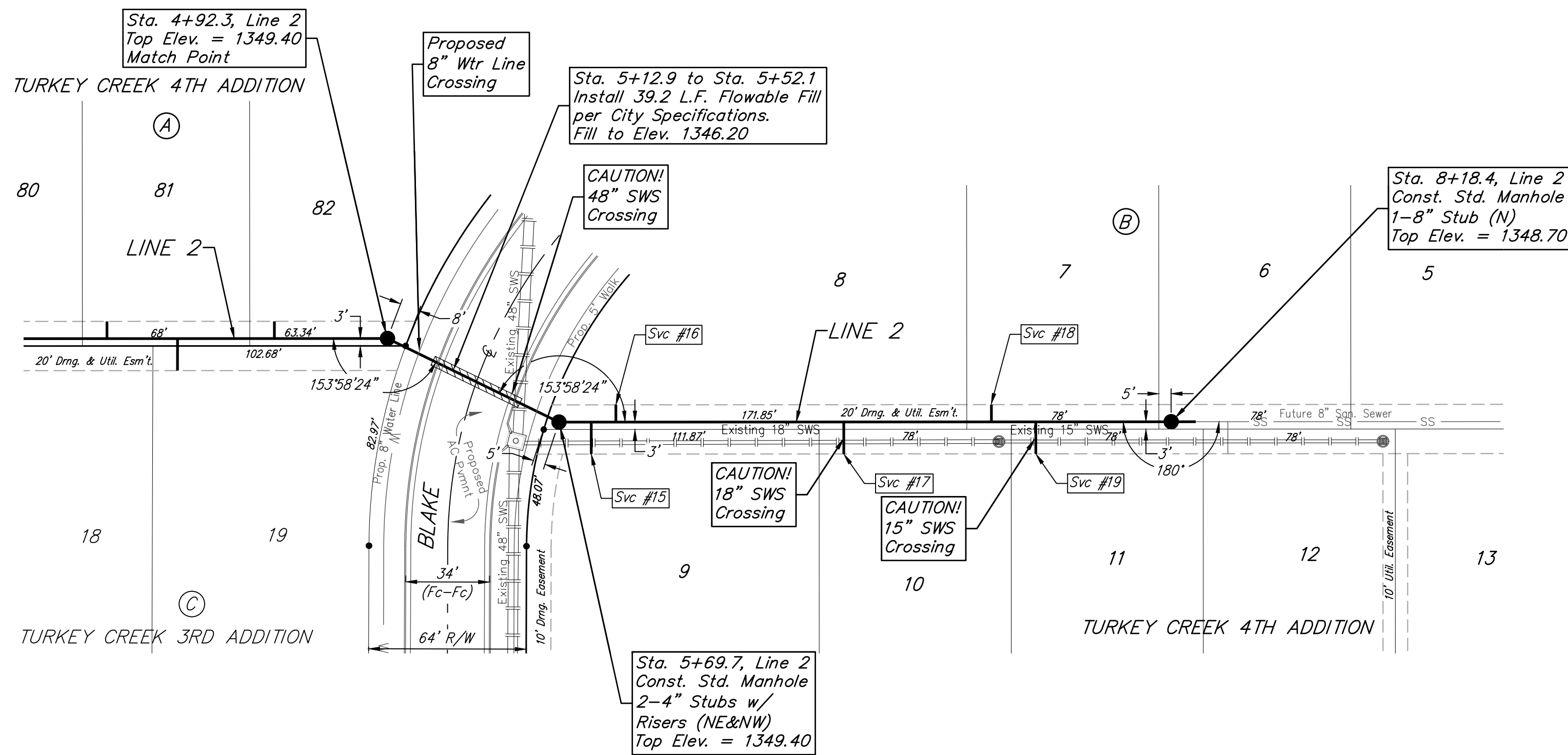


**BENCHMARKS:**  
 RR spike in asphalt, SW Cor.,  
 N1/2, SW1/4, Sec. 34, TWP. 26-S,  
 R-2-E.  
 Elev. = 1400.59 NAVD

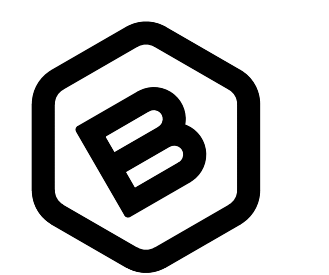
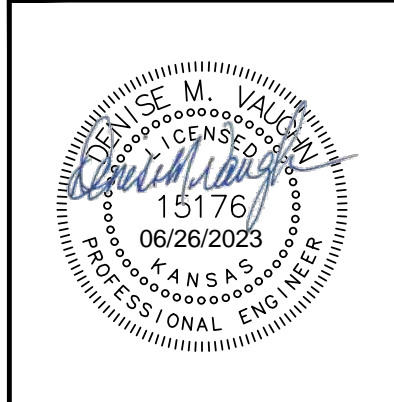
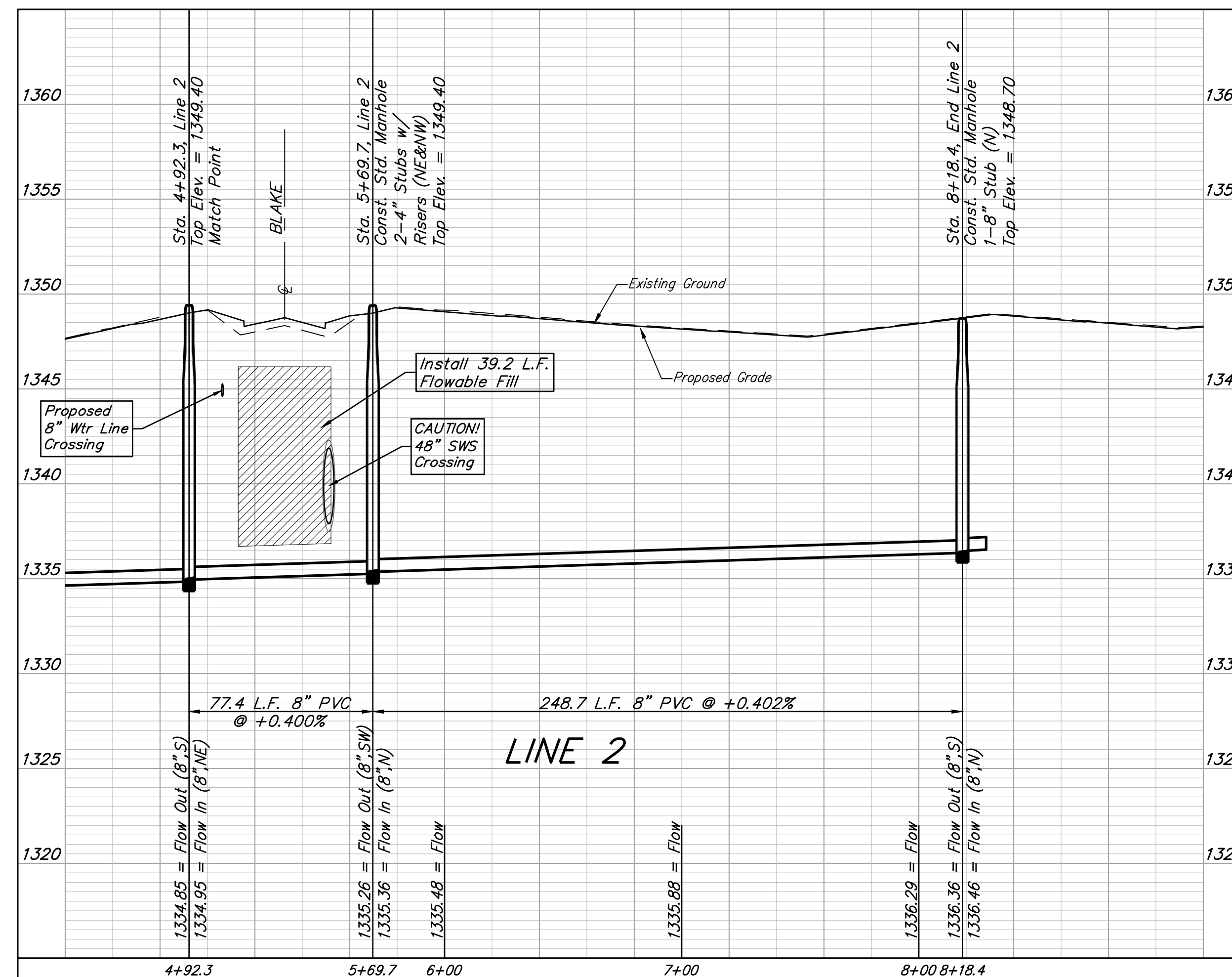
RR spike in E. face of power pole,  
 174± N. of S. line, N1/2, SW1/4  
 & 49± E. of W. line, SW1/4, SEC.  
 34, TWP. 26-S, R-2-E.  
 Elev. = 1398.64 NAVD88

RR spike in S. face of power pole,  
 294± S. of N. line, SW1/4, &  
 48± E. of W. line, SW1/4, SEC. 34,  
 TWP. 26-S, R-2-E.  
 Elev. = 1386.14 NAVD88



SEWER SERVICE TABLE

NUMBER	TYPE	LOCATION				FOR INFORMATION ONLY	
		LOT NO.	BLOCK NO.	LINE NO.	STATION/DIRECTION	APPROXIMATE LENGTH 4" PIPE	
15	8" X 4" Tee	9	B	2	5+82.8/Rt.	10'	13'
16	8" X 4" Tee	8	B	2	5+92.8/Lt.	9.8'	7'
17	8" X 4" Tee	10	B	2	6+85.4/Rt.	7.9'	13'
18	8" X 4" Tee	7	B	2	7+45.4/Rt.	7.8'	7'
19	8" X 4" Tee	11	B	2	7+63.4/Rt.	7.3'	13'



**BAUGHMAN COMPANY**  
 315 Ellis St.  
 Wichita, KS 67211  
 316-262-7271  
 BaughmanCo.com

TURKEY CREEK 4TH  
 ADDITION - PHASE III

**LINE 2**

SANITARY SEWER  
 IMPROVEMENTS

PROJECT NUMBER:  
 468-2020-016815

DESIGN: DMV DRAWN: JAK  
 DATE: June 3, 2022

SHEET **4** OF **16**

File: E:\Projects\Turkey Creek 4th\_1\Engineering\Phase 3\SS\_22-06-E216\SS\_22-06-E216.dwg