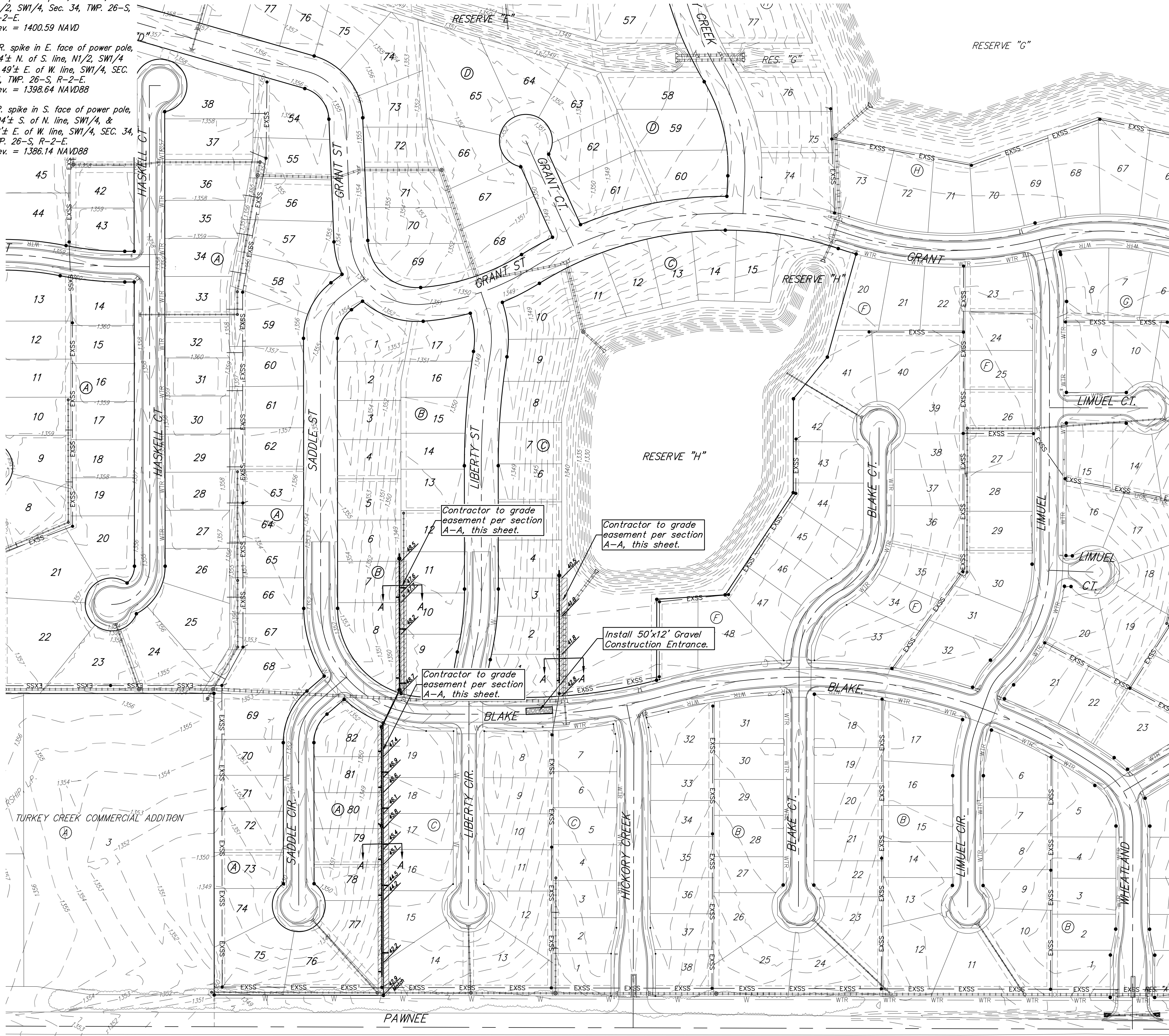
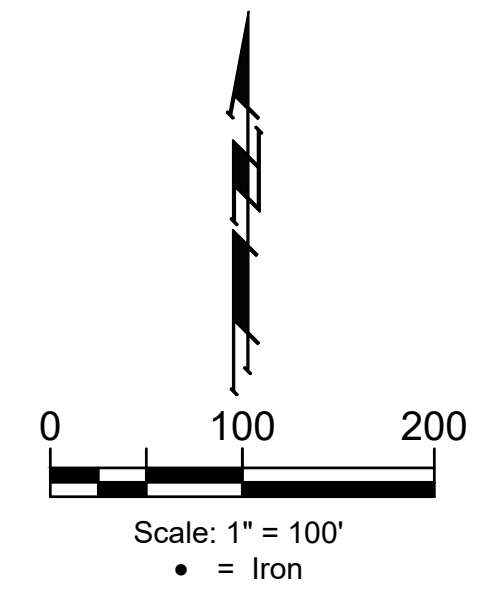


BENCHMARKS:
 RR spike in asphalt, SW Cor.,
 N1/2, SW1/4, Sec. 34, TWP. 26-S,
 R-2-E.
 Elev. = 1400.59 NAVD

RR spike in E. face of power pole,
 174± N. of S. line, N1/2, SW1/4
 & 49± E. of W. line, SW1/4, SEC.
 34, TWP. 26-S, R-2-E.
 Elev. = 1398.64 NAVD88

RR spike in S. face of power pole,
 294± S. of N. line, SW1/4, &
 48± E. of W. line, SW1/4, SEC. 34,
 TWP. 26-S, R-2-E.
 Elev. = 1386.14 NAVD88



= Easements To Be Graded

All Easements have been graded previously by the Storm Water Drain Contractor. The Contractor of this project shall fine-grade the easements as shown to the elevations given on the easement grading plan.

The Contractor shall 'straight' grade the easements between the elevations given. Where a callout designates 'Match', the Contractor will grade to the existing ground elevation.

This Plan Is Not To Be Used As A Comprehensive Grading Plan. All Spot Elevations Are Proposed & Subject To Change.

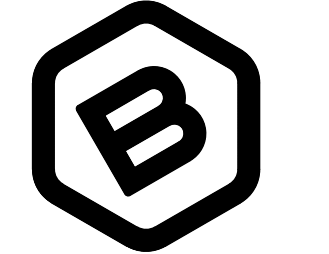
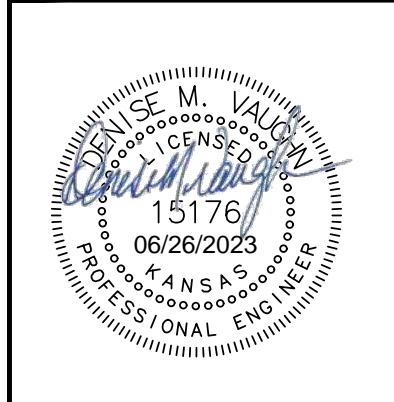
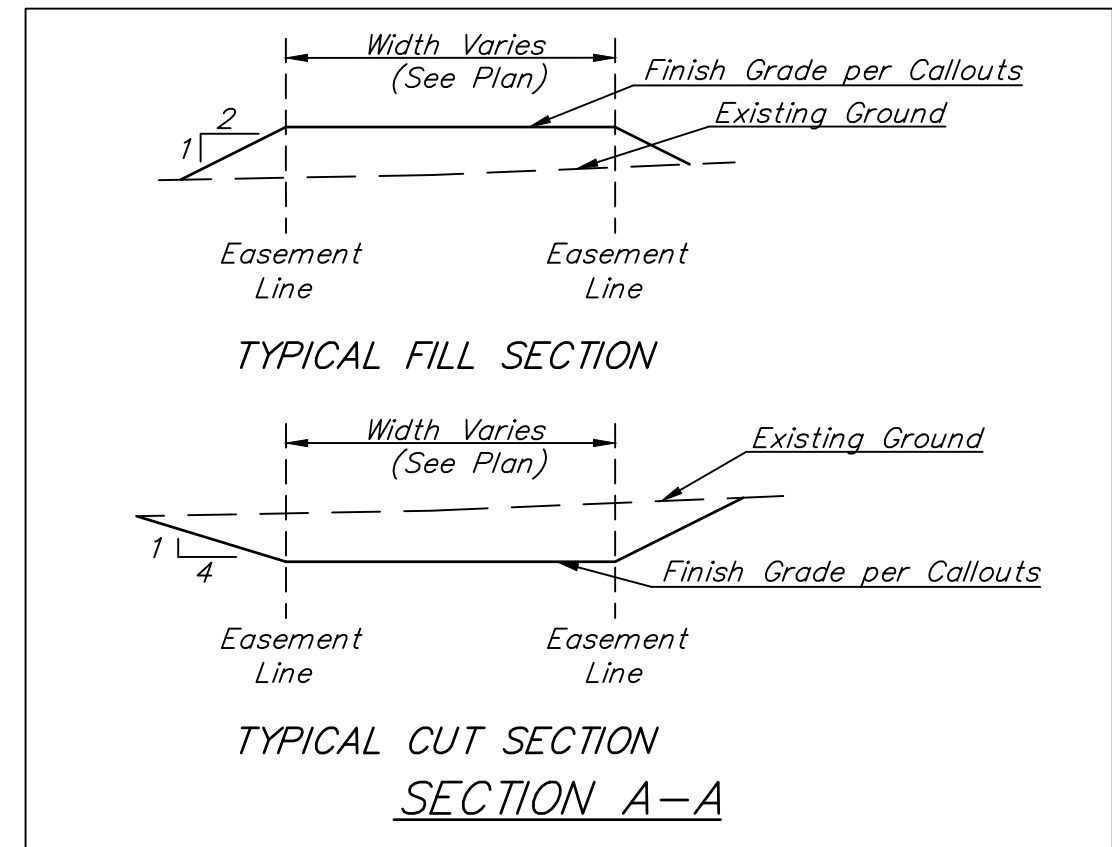
All cost to be included in the Lump Sum bid item "Easement Grading"

Contractor to grade easement per section A-A, this sheet.

Contractor to grade easement per section A-A, this sheet.

Install 50'x12' Gravel Construction Entrance.

Contractor to grade easement per section A-A, this sheet.



BAUGHMAN COMPANY
 315 Ellis St.
 Wichita, KS 67211
 316-262-7271
 BaughmanCo.com

TURKEY CREEK 4TH ADDITION - PHASE III

EROSION CONTROL

SANITARY SEWER IMPROVEMENTS
 PROJECT NUMBER:
 468-2020-016815
 DESIGN: DMV DRAWN: JAK
 DATE: June 3, 2022
 SHEET OF
5 16

File: E:\Projects\Turkey Creek 4th_Phase III_Engineering\Phase 3\SS_22-06-E216\SS_22-06-E216.dwg