

BENCHMARKS

BM #1 - Chiseled "C" in the Top of Curb Located at the Southwest Corner of the Intersection of Hydraulic & Southeast Blvd., 6' East of Fire Hydrant.
Elev. = 1286.43 (NAVD 88)

BM #2 - Chiseled "X" on the Concrete Pad w/ a Vent Pipe Located 500' Southeast of the Intersection of Hydraulic & Southeast Blvd. on the Southwest Side of Southeast Blvd.
Elev. = 1285.59 (NAVD 88)

Sta. 0+15.40 to Sta. 1+28.93
Install 113.53 L.F. 36" O.D. Steel Casing Pipe (0.531" Min. Wall Thickness), Per City of Wichita Standard Specifications - Section 802.3 Steel Casing by Jack & Bore Extend Casing Pipe 5' Min. past RR ROW.

Sta. 0+00.00, Begin SS Line 2
Construct West Connection Structure
Top Elev. = 1285.49
See Detail, Sheet 5.
N: 1672948.63, E: 1654815.16

Exist. SS MH # 5645-17

CAUTION!
Existing U/G AT&T Fiber Optic Crossing

Install 128.93 L.F. 26" HDPE Pipe (DR 32.5)

CAUTION!
Existing 36" Water 36" SS Crossings

Sta. 2+73.21, SS Line 2
P.T. of 200' Radius Curve
N: 1672969.05, E: 1655085.96

Sta. 2+22.73, SS Line 2
P.R.C. of 200' Radius Curve (Lt.)
N: 1672971.98, E: 1655035.62

CAUTION!
Existing 2" Gas O/H Elec Crossings

Sta. 4+45.00, End SS Line 2
Construct East Connection Structure
Top Elev. = 1286.46
See Detail, Sheet 5.
N: 1672973.62, E: 1655257.69

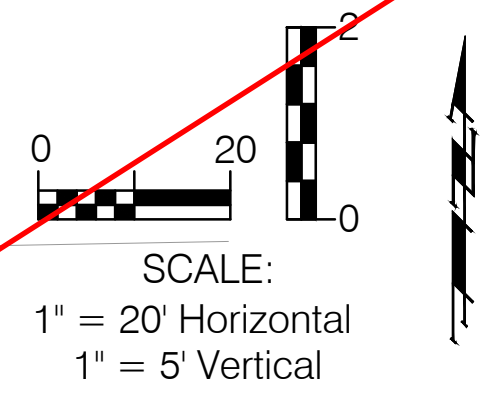
Install 316.07 L.F. 26" HDPE Pipe (DR 32.5) by Jack & Bore for Temporary SS By-Pass.

CAUTION!
Existing U/G AT&T Crossings

Sta. 1+28.93, SS Line 2
P.C. of 200' Radius Curve (Rt.)
N: 1672970.58, E: 1654942.21

Exist. SS MH # 5645-16
(See Sheets 3, 5)

Note:
See Sheet 4B for Sanitary Sewer Line 2 Details.



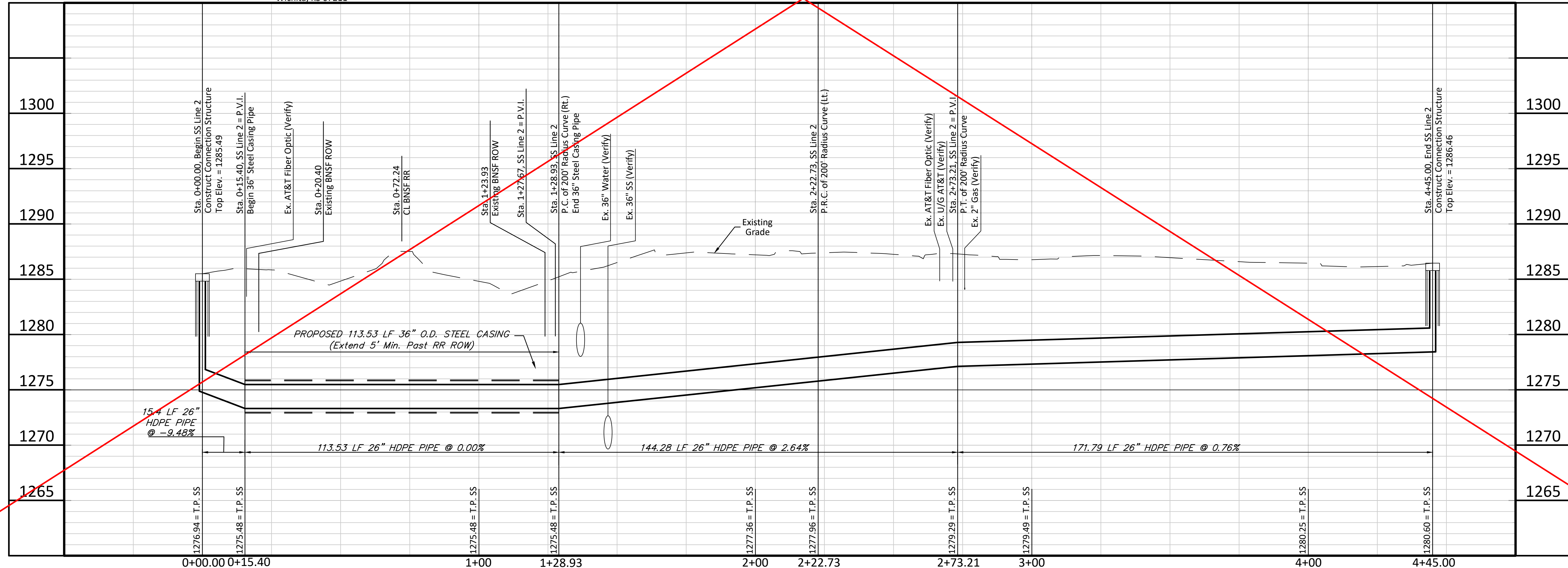
HYDRAULIC

PIZZA HUT
PAWNEE/HYDRAULIC
ADDITION
1
Pizza Hut
1708 E. Pawnee Avenue
Wichita, KS 67211

SS LINE 2 BY-PASS

BLAKE STREET

BOMHOFF ADDITION
Block A
The Floor Project
1900 E. Pawnee Avenue
Wichita, KS 67211



BAUGHMAN COMPANY
315 Ellis St.
Wichita, KS 67211
316-262-7271
BaughmanCo.com

HYDRAULIC & SE BLVD SS
SANITARY SEWER LINE 2 PLAN/PROFILE

CAPITAL IMPROVEMENT PROJECT
PROJECT NUMBER: 468-85276
DESIGN: ENG DRAWN: JSB
DATE: January 26, 2023
SHEET 4A OF 24