

BUILDING PLANS FOR
SCHEELS STRYKER SPORTS
PHASE 9 STADIUM PRESS BOX AND FIELD NETTING IMPROVEMENTS

PROJECT NO. 472-2023-085904
 AN ADDITION TO THE CITY OF WICHITA, SEDGWICK COUNTY, KANSAS
 PAUL GUNZELMAN, P.E. - INTERIM CITY ENGINEER



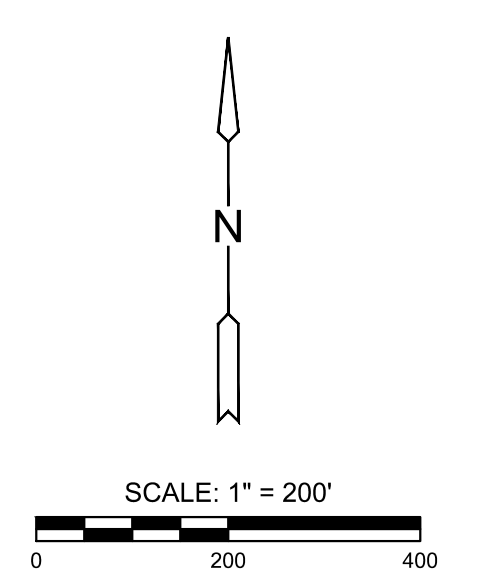
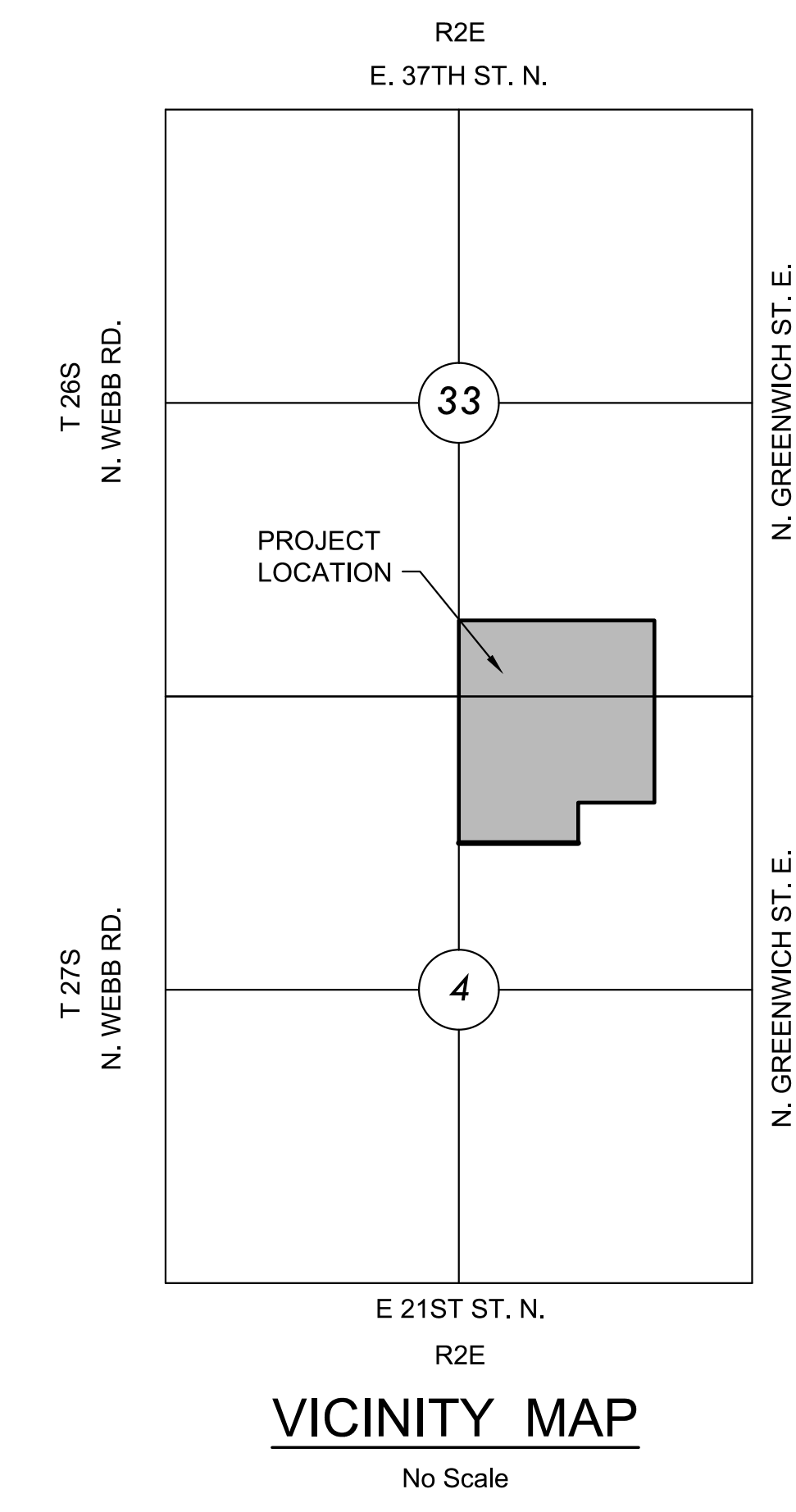
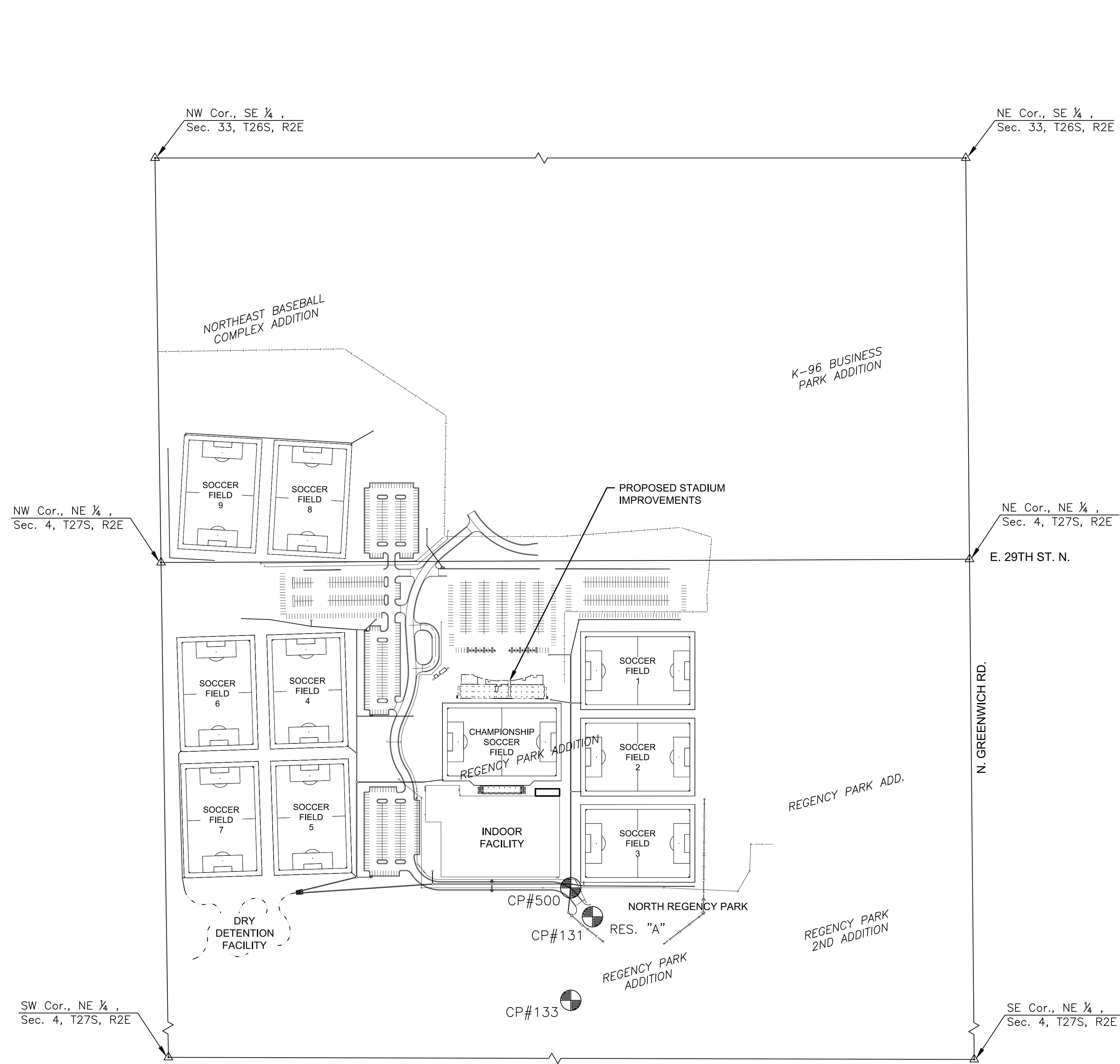
DRAWING INDEX

DRAWING NO.	DESCRIPTION
TS1.0	TITLE SHEET

STADIUM PRESS BOX

DRAWING NO.	DESCRIPTION
-------------	-------------

CIVIL	
SC1.0	NETTING AND FENCING PLAN
SC1.1	NETTING AND FENCING DETAILS
STRUCTURAL	
SS1.1	PRESSBOX FLOOR AND ROOF FRAMING PLANS
SS4.1	FRAMING SECTIONS
MECHANICAL	
SM0.11	MECHANICAL COVERSHEET - PRESS BOX
SM1.11	PRESS BOX - HVAC PLANS
ELECTRICAL	
SE0.11	ELECTRICAL COVERSHEET - PRESS BOX
SE1.11	PRESS BOX - ELECTRICAL IMPROVEMENT PLANS
ARCHITECTURAL	
SG0.2	CODE ANALYSIS AND NARRATIVE
SG0.3	CODE SITE PLAN
SG0.4	PRESS BOX CODE PLANS
SG0.6	TYP FIRESTOPPING DETAILS
SA1.0	ARCHITECTURAL SITE PLAN
SA1.03	PRESSBOX DEMO, FLOOR, & R.C. PLANS
SA1.06	STADIUM & ENLARGED N. LOCKER ROOF PLANS
SA2.01	STADIUM BUILDING ELEVATIONS
SA3.01	PRESSBOX BUILDING SECTIONS
SA5.02	PRESSBOX WALL SECTIONS
SA5.11	STADIUM ROOF DETAILS
SA6.01	DOOR, WINDOW, & FINISH SCHEDULE
SA6.02	DOOR DETAILS
SA6.03	WINDOW DETAILS
SA6.04	PARTITION SCHEDULE
SA7.01	INTERIOR ELEVATIONS



CONTROL POINTS

CP#500 PKN IN CENTERLINE SEAM OF CONCRETE ACCESS DRIVE ON EAST SIDE OF SOCCER COMPLEX BUILDING AT VERY SOUTHEAST SIDE OF STRYKER SITE.
 NORTHING = 1704037.264 EASTING = 1684845.152
 ELEV. = 1379.97 NAVD 88
 60 FEET SOUTHEAST TO FIRE HYDRANT
 3 FEET SOUTH TO EDGE OF ASPHALT

PLUS CUT IN TOP OF CURB ON EAST SIDE OF REGENCY PARK ST. EAST OF SCHIMBERG ACCESS DRIVE
 NORTHING = 1703686.077 EASTING = 1684845.241
 ELEV. = 1379.17 NAVD 88
 52 FEET NORTHWEST TO FIRE HYDRANT NORTH SIDE OF SCHIMBERG ACCESS DRIVE
 73 FEET NORTHWEST OF EAST SIDE OF SCHIMBERG SIGN NORTH SIDE OF SCHIMBERG ACCESS DRIVE

PLUS CUT IN TOP OF CURB SOUTHEAST OF EXISTING DRIVE TO SOCCER COMPLEX FROM REGENCY PARK STREET.
 NORTHING = 1702942.049 EASTING = 1684916.885
 ELEV. = 1379.075 NAVD 88
 70 FEET NORTHWEST TO FIRE HYDRANT ON EAST SIDE OF ACCESS DRIVE OFF OF REGENCY PARK ST.
 43 FEET SOUTHWEST TO CURB INLET ON SOUTH SIDE OF REGENCY PARK STREET SOUTH WEST OF ACCESS DRIVE INTO STRYKER COMPLEX OFF OF REGENCY PARK STREET

NOTE REGARDING THE REQUIRED STRUCTURE OF BIDS:
 THE CITY OF WICHITA REQUIRES EACH BIDDER TO SUBMIT A BID FOR THE BASE BID AND A BID FOR THE ADD ALTERNATE. THE BASE BID WILL INCLUDE THE PRESS BOX IMPROVEMENTS AND INSTALLATION OF THE BARRIER NETTING. THE ADD ALTERNATE WILL BE THE INSTALLATION OF THE 4' CHAIN LINK FENCING.
 THE CITY WILL SELECT A CONTRACOR BASED ON THE BASE BID. THE CITY MAY OR MAY NOT ELECT TO ACCEPT THE LOW BIDDER'S BID FOR THE ADD ALTERNATE.

PHASE 9 STADIUM PRESS BOX AND FIELD NETTING IMPROVEMENTS
SCHEELS STRYKER SPORTS
 WICHITA, KANSAS

10223
 MKEC Engineering
 All Rights Reserved
 www.mkec.com
 These drawings and their contents, including, but not limited to, all concepts, designs, & data are the exclusive property of MKEC Engineering (MKEC), and may not be used or reproduced in any way without the express consent of MKEC.

TITLE SHEET		
PROJECT NO.	1701010567	
DATE	APRIL 2023	
SCALE	1" = 200'	
DESIGNED	DRAWN	CHECKED
DFL	JWC	MAB
ISSUED FOR CONSTRUCTION	04-07-23	
NO.	REVISION	DATE
SHEET NO.		
TS1.0		