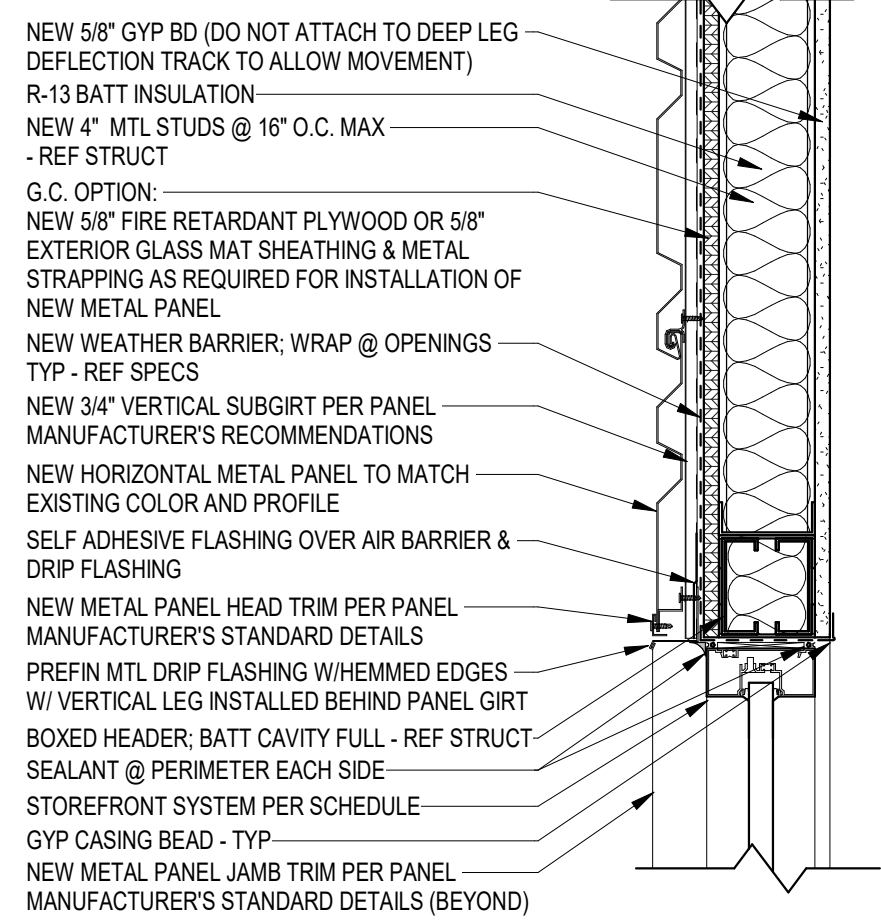
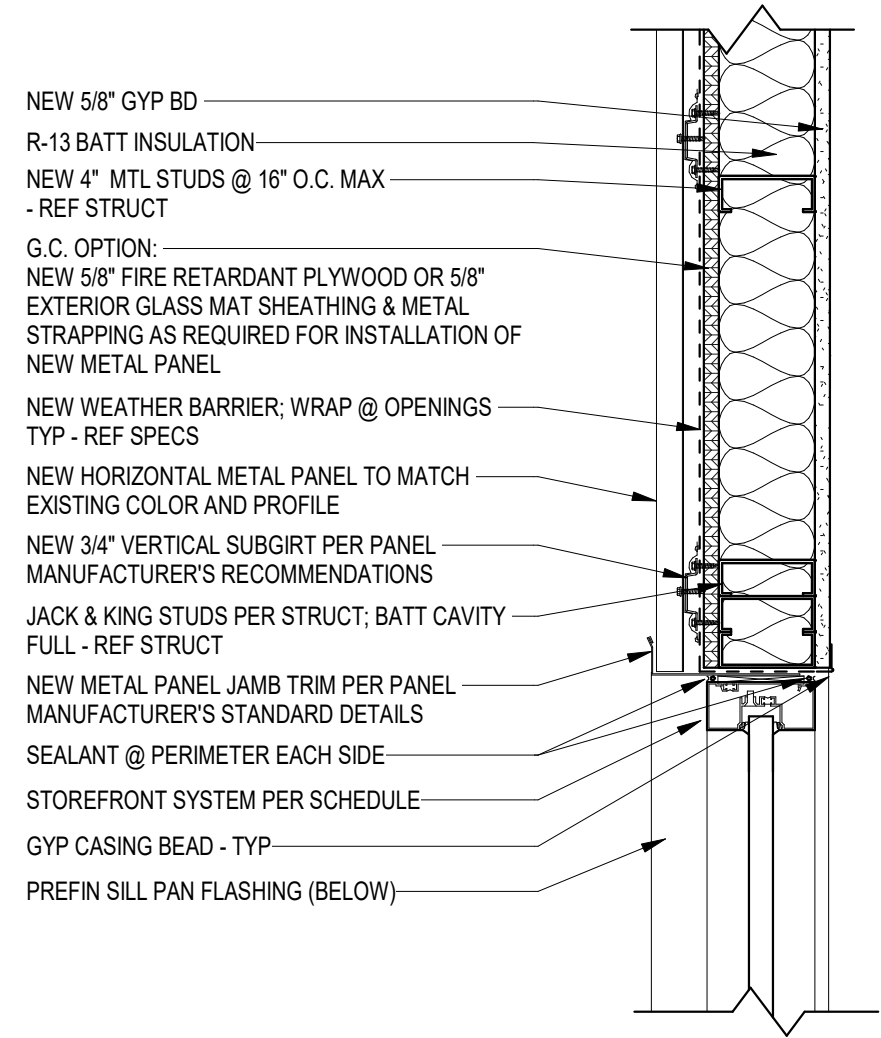


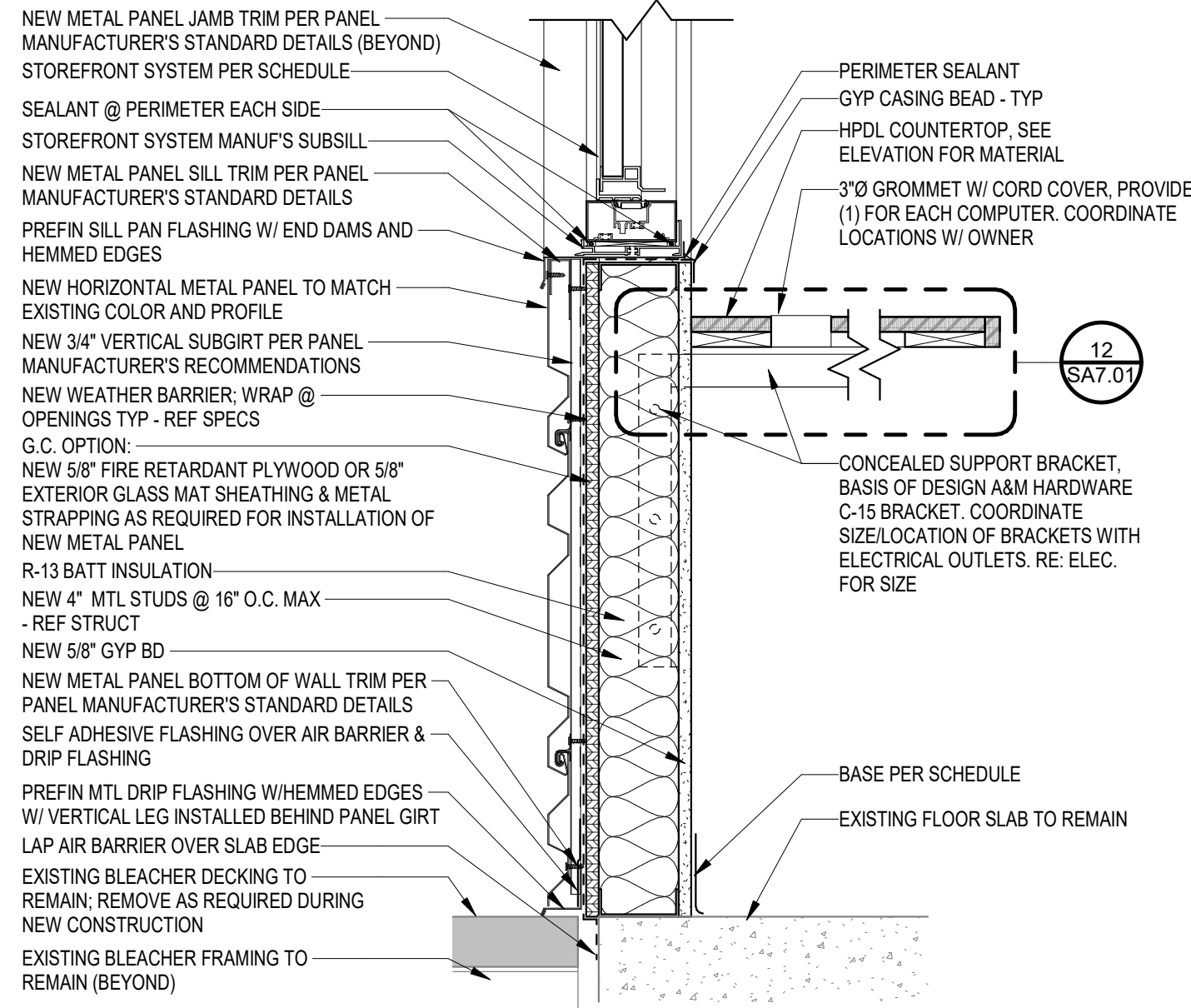
4/20/2023, 3:44:11 PM



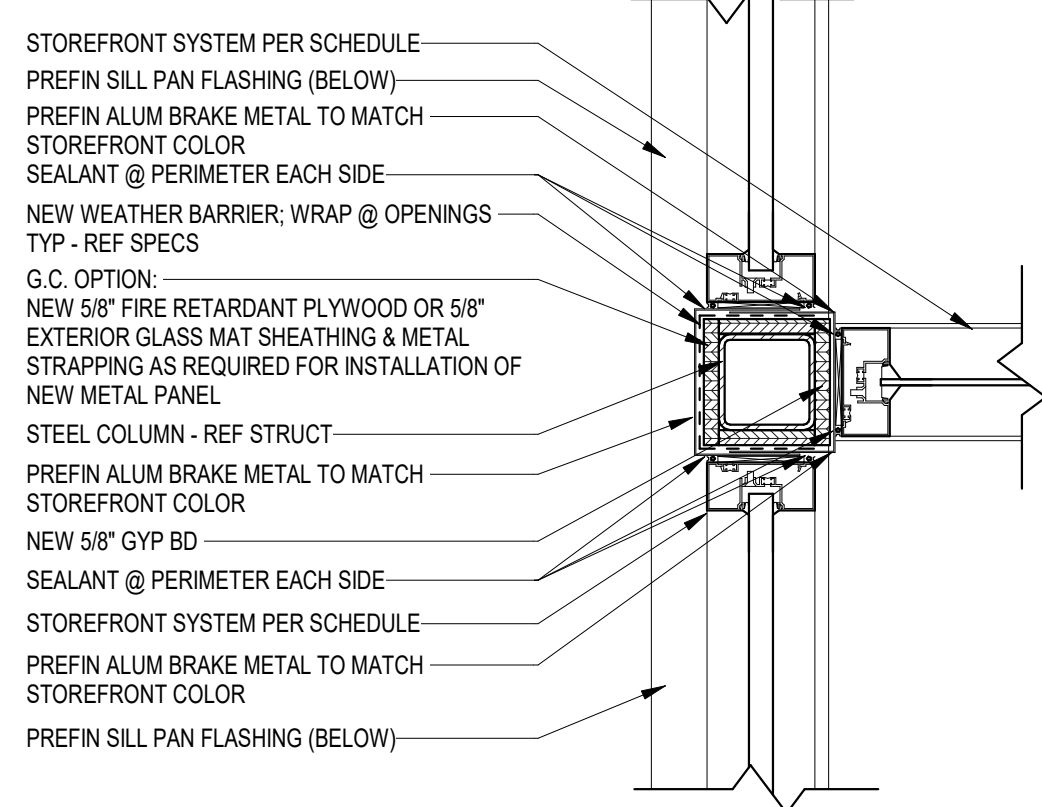
5 STOREFRONT HEAD @ MTL PANEL  
1 1/2" = 1'-0"



6 STOREFRONT JAMB @ MTL PANEL  
1 1/2" = 1'-0"



7 STOREFRONT SILL & MTL PANEL BASE FLASHING  
1 1/2" = 1'-0"

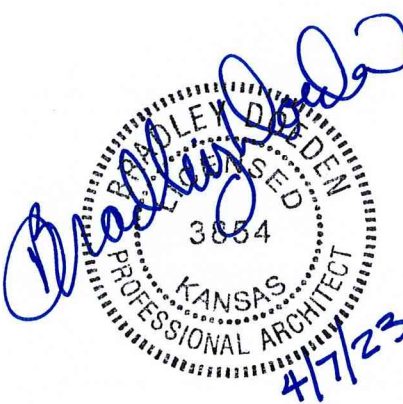


8 STOREFRONT BRAKE METAL JAMB  
1 1/2" = 1'-0"

\\glvm\6642\_glm\_mtl\Projects\01088R21003\_01\_Production\Published Model\_14\_04\_2023\01088R21003\_A\_Silver\_Architect\_Phase 9.rvt



PHASE 9 STADIUM PRESS BOX AND FIELD NETTING IMPROVEMENTS  
**SCHEELS STRYKER SPORTS**  
WICHITA, KANSAS



©2023 MKEC Engineering All Rights Reserved. www.mkec.com These drawings and their contents, including, but not limited to, all concepts, designs, & data are the exclusive property of MKEC Engineering (MKEC), and may not be used or reproduced in any way without the express consent of MKEC.

WINDOW DETAILS		
PROJECT NO.	01088R21003	
DATE	04-07-2023	
SCALE	AS NOTED	
DESIGNED	DRAWN	CHECKED
MH	SS	MH
0	ISSUED FOR CONSTRUCTION	04-07-23
NO.	REVISION	DATE
SHEET NO.		
SA6.03		

