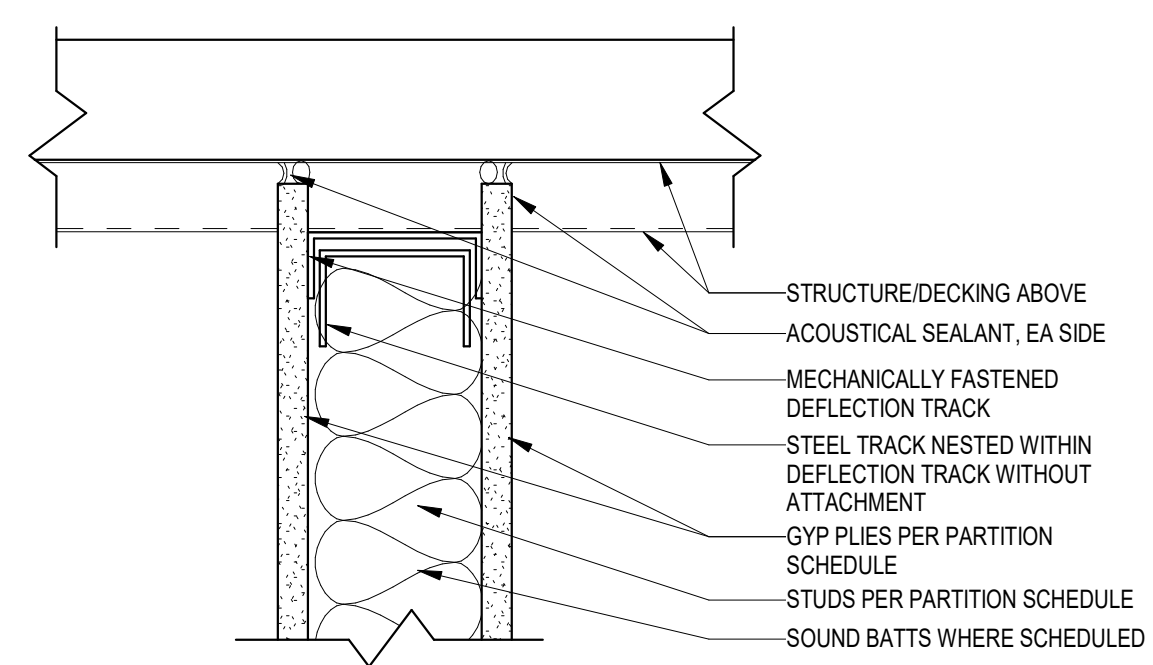
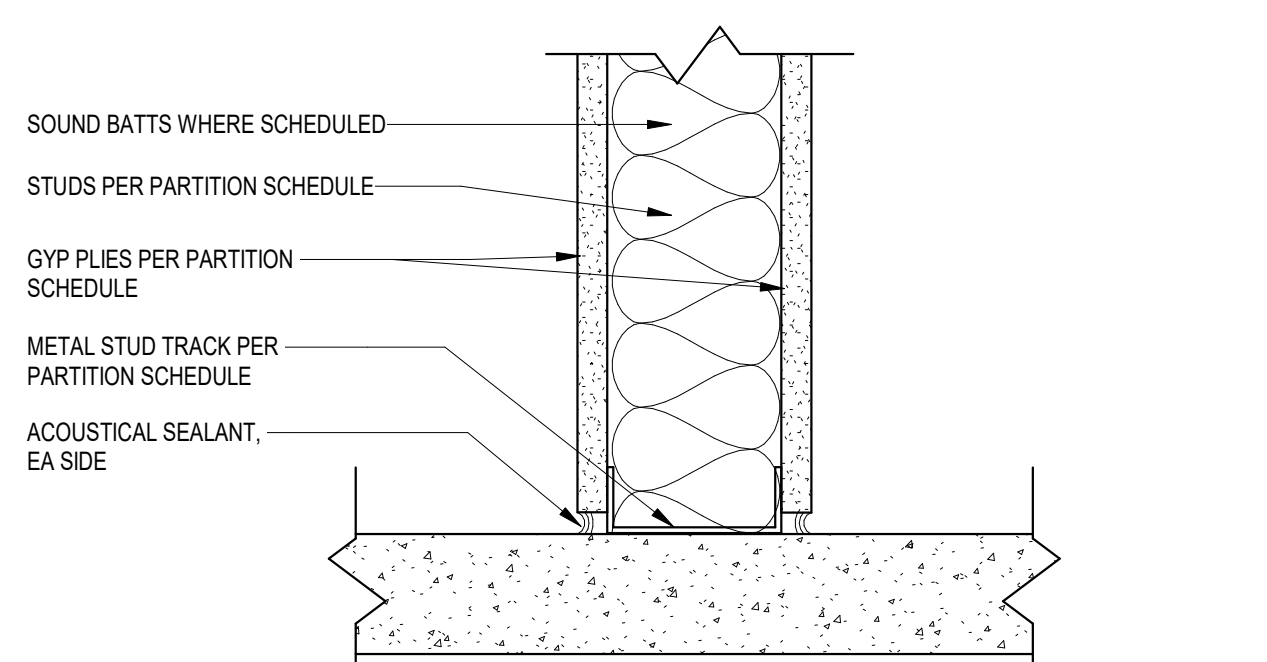


S7 3-5/8\"/>



2 TYP T.O. WALL DETAIL
3\"/>



1 TYP B.O. WALL DETAIL
3\"/>

UNBRACED LENGTH / LIMITING HEIGHT FOR INTERIOR STUD FRAMING - 1 HOUR FIRE-RATED AND NON-RATED PARTITIONS - ALLOWABLE DEFLECTION: L / 240 at 5 PSF

STUD SIZE	STUD SPACING	LIMITING HEIGHT: 25 GAUGE STUD	LIMITING HEIGHT: 20 GAUGE STUD
1 5/8"	16"	8'-4"	9'-6"
2 1/2"	16"	11'-3"	12'-10"
3 5/8"	16"	14'-4"	16'-5"
6"	16"	19'-9"	24'-6"
4" SHAFTWALL	24"	N/A	17'-6"

- PARTITION NOTES**
- STUD SPACINGS SHALL BE 16" O.C. UNLESS NOTED OTHERWISE.
 - REFER TO UNBRACED LENGTH/LIMITING HEIGHT CHARTS FOR STUD GAUGE REQUIREMENTS. REFER TO SPECIFICATIONS FOR ADDITIONAL REQUIREMENTS FOR USE OF HEAVIER LIGHT GAUGE METAL FRAMING IN LIEU OF THOSE SHOWN.
 - GENERAL CONTRACTOR SHALL SUPPLY AND COORDINATE INSTALLATION OF BLOCKING IN ALL INTERIOR PARTITIONS.
 - REFERENCE ENLARGED INTERIOR ELEVATIONS FOR ADDITIONAL WALL FINISH INFORMATION.
 - REFERENCE ROOM FINISH SCHEDULE, SHEET A-601, FOR WALL SUBSTRATE INFORMATION.
 - PARTITION DEFLECTION SHALL BE LIMITED TO L/240 AT 5 PSF HORIZONTAL LOAD.
 - PARTITION BRACING SHALL OCCUR ONLY IN SPACES WITH CEILINGS OR SOFFITS IN WHICH THE BRACING SHALL BE CONCEALED FROM VIEW.
- STUD GAUGE NOTES**
- USE CHART BELOW TO DETERMINE THE REQUIRED STUD GAUGE FOR THE VARIOUS PARTITION TYPES.
 - REFER TO STRUCTURAL DRAWINGS / SPECIFICATIONS FOR STRUCTURAL STUD FRAMING REQUIREMENTS AT EXTERIOR WALLS.
 - AT GENERAL CONTRACTORS OPTION, STUD GAUGES MAY BE ENGINEERED BY A REGISTERED PROFESSIONAL IN THE STATE OF THIS PROJECT.
 - ABOVE CEILING BRACING (AT NOT MORE THAN 4'-0" O.C.) IS PERMITTED FOR NON-FIRE RATED PARTITIONS TO HELP REDUCE THE UNBRACED LENGTH OF PARTITION. PROVIDE HORIZONTAL STUD STRONGBACK.

PARTITION TYPE KEY

PARTITION MATERIAL
 C = CONCRETE
 F = INSULATED CONCRETE FORM
 M = MASONRY
 P = MIXED CONSTRUCTION MATERIALS
 S = METAL STUD
 W = WOOD STUD

PARTITION TYPE NUMBER

EXAMPLE PARTITION TYPE TAG
S1aD1

FIRE RATING
 O = NO SMOKE/FIRE RATING REQUIREMENTS
 V = SMOKE RATED
 1 = 1 HOUR FIRE RATED
 X = 1 HOUR FIRE & SMOKE RATED
 2 = 2 HOUR FIRE RATED
 Z = 2 HOUR FIRE & SMOKE RATED

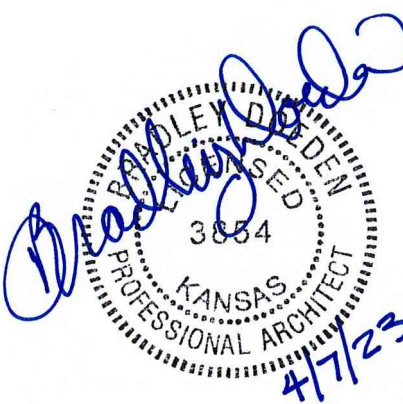
EXTENSION DESIGNATION
 C = EXTEND PARTITION 6" ABOVE CEILING
 D = EXTEND PARTITION TO DECK/FLOOR SLAB
 L = LOW WALL - REF PARTITION TYPE FOR PARTITION HEIGHT
 N = INFILL PARTITION IN EXISTING OPENING

NOTE:
 1. NOT ALL COMBINATIONS OF PARTITION TYPES SHOWN ARE UTILIZED IN THIS PROJECT.
 2. PARTITION TYPE "P" WITH MIXED CONSTRUCTION MATERIALS WILL NOT HAVE MATERIAL THICKNESS DESIGNATIONS.

PHASE 9 STADIUM PRESS BOX AND FIELD NETTING IMPROVEMENTS
SCHEELS STRYKER SPORTS
 WICHITA, KANSAS



Wichita, KS - 316.684.9600



©2023 MKEC Engineering All Rights Reserved. www.mkec.com These drawings and their contents, including, but not limited to, all concepts, designs, & data are the exclusive property of MKEC Engineering (MKEC), and may not be used or reproduced in any way without the express consent of MKEC.

PARTITION SCHEDULE

PROJECT NO.	01088R21003	
DATE	04-07-2023	
SCALE	AS NOTED	
DESIGNED	DRAWN	CHECKED
MH	SS	MH
ISSUED FOR CONSTRUCTION	04-07-23	
NO.	REVISION	DATE
SHEET NO. SA6.04		

