



©2023 MKEC Engineering All Rights Reserved. www.mkec.com These drawings and their contents, including, but not limited to, all concepts, designs, & data on this enclosure is the property of MKEC Engineering (MKEC), and may not be used or reproduced in any way without the express consent of MKEC.

PRESS BOX - ELECTRICAL IMPROVEMENT PLANS

PROJECT NO. 1701010567

DATE 04-07-23

SCALE AS NOTED

DESIGNED DRAWN CHECKED
GAKH JAC SA

0 ISSUED FOR CONSTRUCTION 04-07-23

NO. REVISION DATE

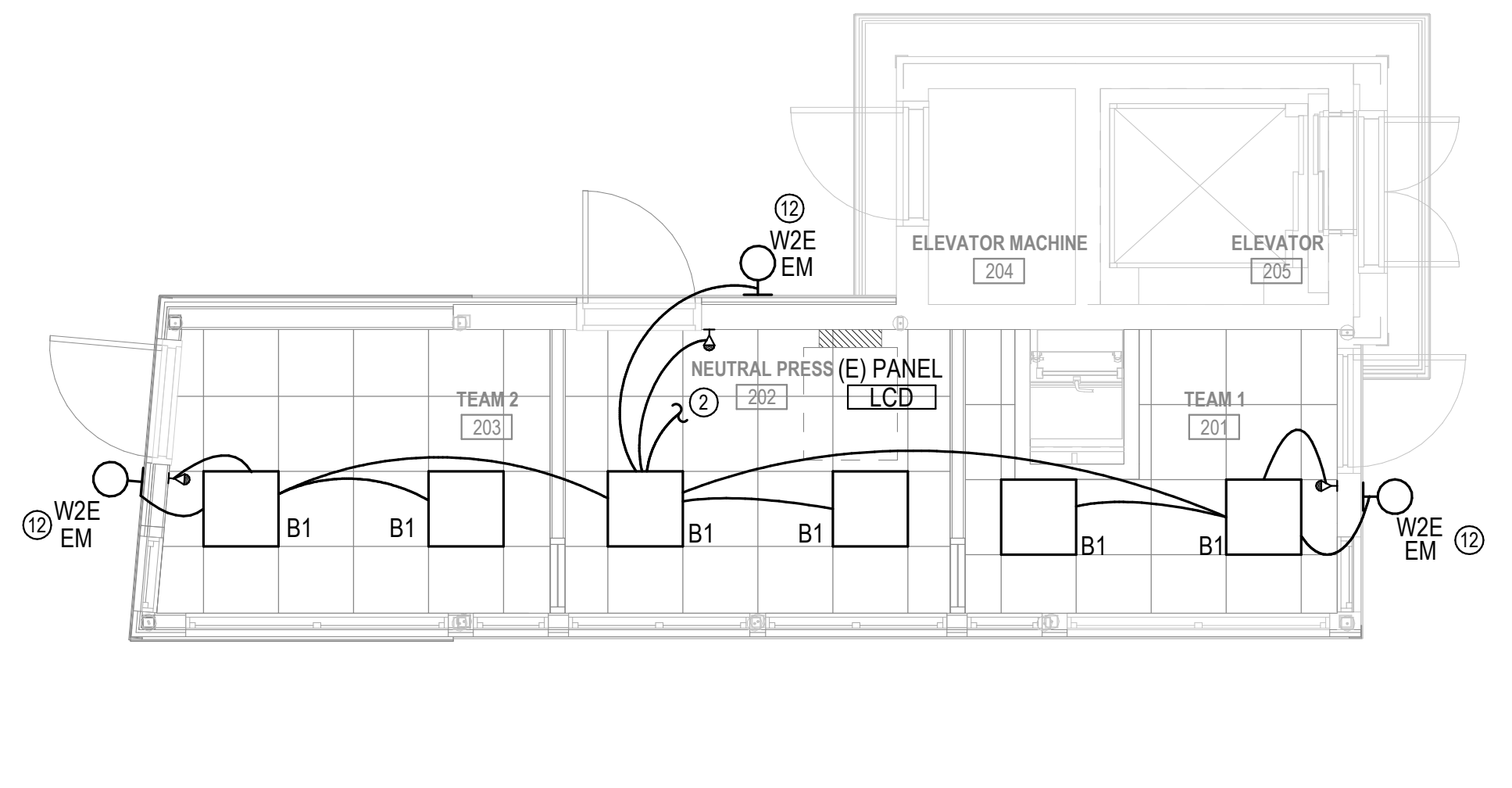
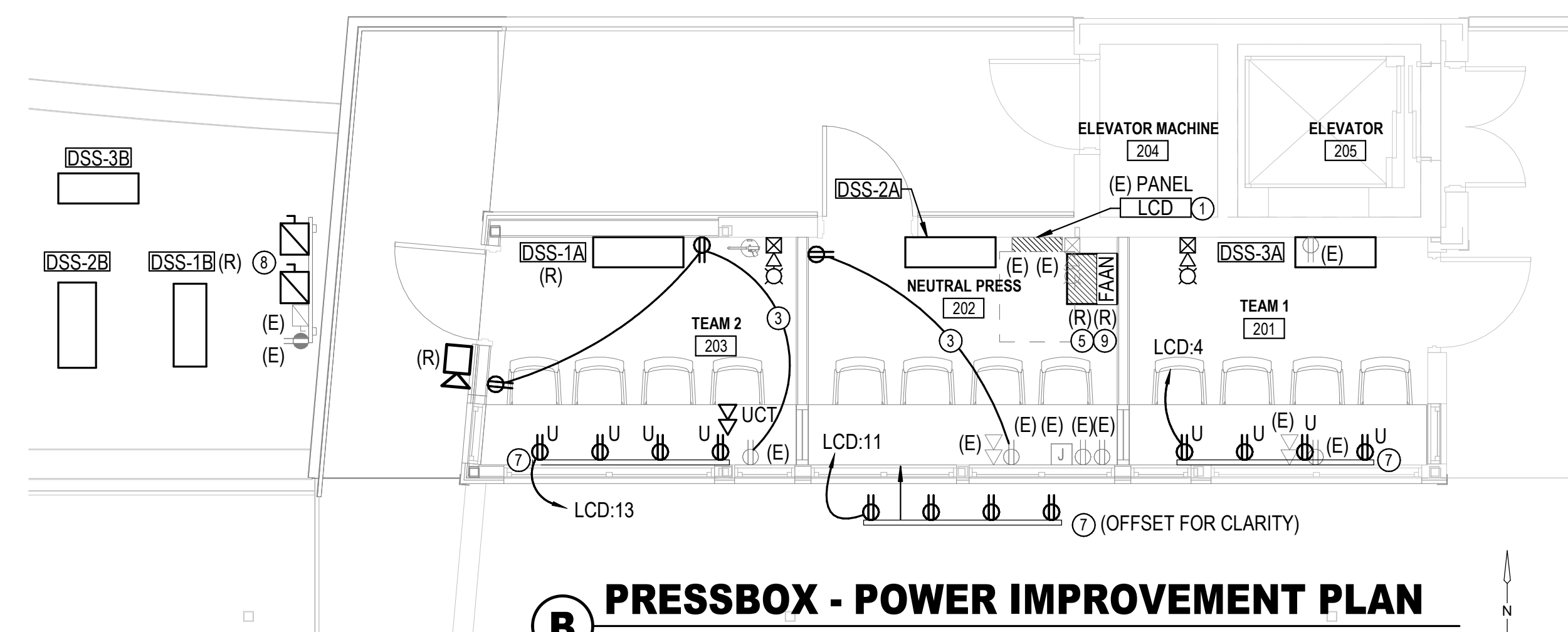
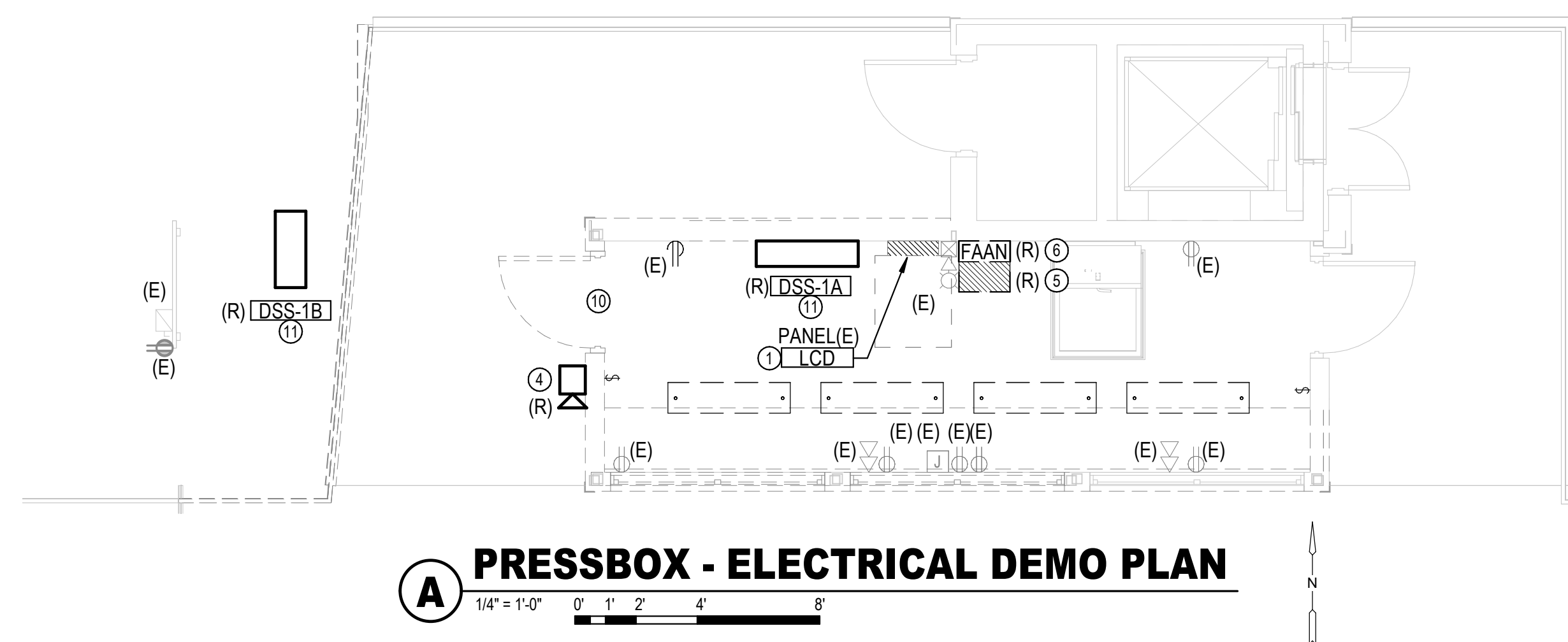
SHEET NO.

SE1.11

- KEYED NOTES**
- EXISTING PANEL TO REMAIN.
 - CREATE NEW SWITCHED CIRCUITS FROM EXISTING LIGHTING CIRCUIT IN AREA.
 - CONNECT NEW DEVICES TO EXISTING CIRCUIT.
 - RELOCATE EXISTING LOUDSPEAKER. REFER TO IMPROVEMENT PLAN FOR NEW LOCATION.
 - RELOCATE EXISTING NETWORK RACK. REFER TO IMPROVEMENT PLAN FOR NEW LOCATION.
 - RELOCATE EXISTING FIRE ALARM ANNUNCIATOR PANEL. REFER TO IMPROVEMENT PLAN FOR NEW LOCATION.
 - INSTALL USB TYPE DEVICE IN WIREMOLD 3000 SERIES RACEWAY AT 2'-0" OC, CENTERED ON WALL. MOUNT RACEWAY TO WINDOW MULLION. PROVIDE ALL NECESSARY COMPONENTS FOR A COMPLETE INSTALLATION.
 - EXISTING STRUT RACK WITH (1) DISCONNECT AND GFCI RECEPTACLE. RELOCATE STRUT STAND AS NECESSARY TO ACCOMMODATE NEW OUTDOOR UNITS. PROVIDE ADDITIONAL STRUT AS REQUIRED FOR NEW UNIT DISCONNECTS.
 - RELOCATE EXISTING FIRE ALARM ANNUNCIATOR PANEL ABOVE RELOCATED NETWORK RACK.
 - RELOCATE ALL EXISTING DEVICES IN WALL TO BE REMOVED.
 - EXISTING INDOOR SPLIT SYSTEM INDOOR AND OUTDOOR UNITS TO BE RELOCATED. EXTEND CONDUIT AND WIRE AND RECONNECT AS REQUIRED. REFER TO IMPROVEMENT PLAN FOR NEW LOCATION.
 - MOUNT FIXTURE ON WALL AT 96" AFF.

COMMUNICATION/SECURITY SYMBOLS LEGEND

SYMB	DESCRIPTION
VOIC/DA	VOICE/DATA OUTLET: EACH VOICE/DATA OUTLET LOCATION WILL REQUIRE 4X4 SQUARE JUNCTION BOX WITH SINGLE GANG MUD RING AND 0.75" EMT STUBBED ABOVE THE CEILING. TURN CONDUIT 90° ABOVE CEILING. INSTALL PULL CORD AND INSULATED BUSHING FOR DATA/VOICE CABLE. CABLE AND TERMINATIONS SHALL BE PROVIDED AND INSTALLED BY SINGLE SOURCE CONTRACTOR PER SPECIFICATIONS. PROVIDE # OF DROPS PER EACH PLAN LOCATION.



EQUIPMENT CONNECTION SCHEDULE - PRESS BOX

MARK	DESCRIPTION	UNIT VOLTAGE	PHASE	FULL LOAD AMPS	MOCP	PANEL	CIRCUIT NUMBER	# OF POLES	DISCONNECT			STARTER			FEEDER			REMARKS
									TYPE	ENCL. RATING (NEMA)	FUSE SIZE AMPS*	TYPE	ENCL. RATING (NEMA)	NEMA SIZE	WIRE AND CONDUIT	CONTROLLER		
DSS-1A	DUCTLESS SPLIT SYSTEM #1 - INDOOR	240	1	1.0	30		2	2	T-20A	1	-	PWE	-	-	1	(2)-#10, #10GND IN 0.5".	THERMOSTAT	1.2
DSS-1B	DUCTLESS SPLIT SYSTEM #1 - OUTDOOR	240	1	11.0	30		2	2	S-30A	3R	-	PWE	-	-	1	(2)-#10, #10GND IN 0.5".	DSS-1A	1.2
DSS-2A	DUCTLESS SPLIT SYSTEM #2 - INDOOR	240	1	1.0	15		2	2	T-15A	1	-	PWE	-	-	1	(2)-#12, #12GND IN 0.5".	THERMOSTAT	1
DSS-2B	DUCTLESS SPLIT SYSTEM #2 - OUTDOOR	240	1	7.0	15	LCD	3.5	2	S-30A	3R	-	PWE	-	-	1	(2)-#12, #12GND IN 0.5".	DSS-2A	1
DSS-3A	DUCTLESS SPLIT SYSTEM #3 - INDOOR	240	1	1.0	15		2	2	T-15A	1	-	PWE	-	-	1	(2)-#12, #12GND IN 0.5".	THERMOSTAT	1
DSS-3B	DUCTLESS SPLIT SYSTEM #3 - OUTDOOR	240	1	7.0	15	LCD	7.9	2	S-30A	3R	-	PWE	-	-	1	(2)-#12, #12GND IN 0.5".	DSS-3A	1

TABLE ABBREVIATIONS:

GENERAL:
ENCL - ENCLOSURE
PWE - PROVIDED WITH EQUIPMENT. WIRING CONNECTIONS BY ELECTRICAL CONTRACTOR.
PBO - PROVIDED BY OTHERS.
* - SEE SPECIFICATIONS FOR TYPE.

STARTERS:
MS - MAGNETIC OR SOLID STATE
Z - 2-SPEED, ADDED TO PREVIOUS
V - VARIABLE FREQUENCY DRIVE
C - COMBINATION STYLE
R - INTERPOSING RELAY
M (OR T) - MANUAL - SEE DISCONNECT FOR T.

DISCONNECTS:
S - SAFETY SWITCH
T - TOGGLE TYPE
P - CORD AND PLUG.

CONTROLLERS:
I - INTERLOCK
BCS - BUILDING CONTROL SYSTEM
EM - EQUIPMENT MANUFACTURER CONTROL.

REMARKS:
1) INDOOR UNIT POWERED FROM OUTDOOR UNIT. SUPPLY INTERCONNECTION WIRE BETWEEN UNITS. RUN AN ADDITIONAL 1". BETWEEN UNITS FOR CONTROLS.
2) UNIT TO BE RELOCATED. EXTEND CONDUIT AND WIRE AS NECESSARY TO NEW LOCATION.

LIGHT FIXTURE SCHEDULE - PRESS BOX

FIXT. LTR.	MANUFACTURER	CATALOG NUMBER	LAMPS		DRIVER		FIXT. VOLT.	FINISH	MOUNTING	FIXTURE VA	REMARKS/DESCRIPTION	SPECIFIC NOTES
			#	TYPE	#	TYPE						
B1	WILLIAMS	ILP-22L50/840-DIM-UNV	-	LED	-	NON-DIM	120	STANDARD	RECESSED	40	2' X 2' LED FLAT PANEL.	
WZE	US ARCHITECTURAL	RZR-WM1-PL-LED-V-20LED-700MA-C W-120-RAL-9005-T-EM1-PV120V	-	LED	-	NON-DIM	120	BRONZE	WALL	44	LED WALL PACK WITH BATTERY AND PHOTOCELL.	

GENERAL NOTES (APPLY TO ALL LIGHTING):

A. ALL LIGHTING FIXTURES SHALL BE RATED FOR LIGHTING POWER CIRCUIT VOLTAGE. CONTRACTOR MUST VERIFY ALL LOCATIONS.

B. ELECTRICAL CONTRACTOR SHALL CHECK AND COORDINATE ALL LIGHTING FIXTURE CATALOG NUMBERS WITH THE INTENT OF FIXTURE DESCRIPTIONS, LISTED ACCESSORIES AND TYPE OF INSTALLATION.

C. ELECTRICAL CONTRACTOR SHALL PROVIDE EACH LIGHTING FIXTURE COMPLETE WITH PLASTER FRAMES AND ALL OTHER INSTALLATION AND HANGING HARDWARE AS REQUIRED FOR A COMPLETE AND FINISHED INSTALLATION AT EACH FIXTURE LOCATION.

D. ALL FIXTURES SHALL BE LISTED BY A NATIONALLY RECOGNIZED TESTING LABORATORY (NRTL) AND LABELED. ALL LIGHTING FIXTURES EXPOSED TO WEATHER, MOISTURE, OR OTHER ENVIRONMENTS SHALL BEAR THE APPLICABLE ENVIRONMENTAL OR APPLICATION LABEL.

E. ALL EXIT/DIRECTIONAL SIGNS SHALL BE INSTALLED COMPLETE WITH ALL INSTALLATION AND HANGING ACCESSORIES TO PROVIDE AN UNOBSTRUCTED VIEW OF EACH SIGN FACE. SIGNS WILL BE ADJUSTED AS NECESSARY WITHOUT ADDITIONAL COST TO THE OWNER.

F. SIGNS TO READ "EXIT". SIGNS WILL BE SINGLE OR DOUBLE FACE, WITH OR WITHOUT DIRECTIONAL ARROWS, AS SHOWN ON PLANS. SIGNS IN GENERAL WILL BE CEILING MOUNTED, LOCATED AND ADJUSTED FOR BEST VIEW. PENDANTS SHALL NOT BE USED UNLESS SPECIFICALLY INDICATED ON PLANS. SHADED PORTION OF EXIT SYMBOL DENOTES ILLUMINATION FACE.

G. REFER TO APPLICABLE SECTIONS OF THE SPECIFICATIONS FOR ADDITIONAL REQUIREMENTS FOR LIGHTING FIXTURES.

H. VERIFY ALL LIGHTING FIXTURE LOCATIONS, FINISHES AND CEILING TYPES WITH ARCHITECT PRIOR TO INSTALLING. VERIFY VOLTAGE WITH ENGINEER PRIOR TO INSTALLING.

I. ELECTRICAL CONTRACTOR TO FIELD ADJUST AIMING PATTERN OF EXTERIOR LIGHTS AT NIGHT SESSION. OWNER & ARCHITECT TO DETERMINE TIME AND DATE.

J. INSTALLATION ELEVATION SHOWN IS FROM AFF OR AFG AS OBVIOUSLY APPLICABLE. TO CENTER OF OUTLET BOX UNLESS OTHERWISE NOTED.

K. FIXTURE SUBSTITUTIONS: SHALL BE SUBMITTED IN WRITING TO THE ENGINEER FOR APPROVAL, 7 BUSINESS DAYS PRIOR TO BID. SUBMIT CUT SHEETS OF SPECIFIED ITEM ALONG WITH A CUT SHEET OF THE DESIRED SUBSTITUTION, WITH ALL DIFFERENCES NOTED. EMAIL CUT SHEETS INCLUDING PHOTOMETRIC INFORMATION TO ELECTRICAL ENGINEER. FAX TRANSMISSIONS ARE NOT ACCEPTABLE. SUBSTITUTIONS NOT SUBMITTED AS PER THIS PROCEDURE WILL NOT BE CONSIDERED. THE ENGINEER'S DECISION OF APPROVAL OR DISAPPROVAL OF A PROPOSED SUBSTITUTE SHALL BE FINAL.

L. SHOP DRAWINGS: DIFFERENCES SHALL BE SPECIFICALLY NOTED ON THE "SHOP DRAWINGS"; THIS INCLUDES BUT IS NOT LIMITED TO: FIXTURE SUBSTITUTIONS, LAMPS, VOLTAGE, MOUNTING, PHYSICAL DIMENSIONS AND FINISHES. DRAWING TO COMPLY DOES NOT RELIEVE THE CONTRACTOR OF DESIGN DOCUMENT INTENTION AND WILL NOT BE REASON FOR ADDITIONAL REIMBURSEMENT. ADDITIONAL REQUIREMENTS MAY BE FOUND ELSEWHERE IN THE SPECIFICATIONS OR SPECIFICATIONS.

SPECIFIC NOTES (AS REFERENCED TO IN SCHEDULE)

EXISTING

PANEL: LCD (E)
LOCATION: NEUTRAL PRESS 202
FED FROM: MDP-C
MOUNTING: Surface
ENCLOSURE: Type 1

BRANCH PANELBOARD - NORMAL POWER
VOLTAGE: 120/240
PHASE: 1
WIRES: 3

A.I.C.: 3000
MAINS: 400 A
M.C.B.: 300 A

LOAD TYPE: L=LIGHTING, R=RECEPTACLE, M=MOTORS, Ho=HOSPITAL, K=KITCHEN, H=HEAT, Mi=MISC

CKT	LOAD DESCRIPTION	TRIP	POLE	TYPE	A	B	TYPE	POLE	TRIP	LOAD DESCRIPTION	CKT
1	PRESSBOX RCPTS	20 A	1	--	0	0	--	1	20 A	PRESSBOX LITS AND RCPTS	2
3	SPARE	15 A	2	--	0	0	--	1	15 A	SPARE	4
5										EF-6	6
7	SPARE	15 A	2	--	0	0	--	2	15 A	EW-2	8
9											10
11	SPARE	80 A	2	--	0	0	--	1	15 A	EF-4	12
13	SPARE	20 A	1	--	0	0	--	2	15 A	PTAC-4	14
15	AMP RACK RCPT	20 A	1	--	0	0	--	1	20 A	AMP RACK RCPT	16
17	MACHINE RM	20 A	1	--	0	0	--	1	20 A	AMP RACK RCPT	18
19	SPARE	80 A	2	--	0	0	--	2	20 A	AMP RACK RCPT	20
21											22
23	ROOF RCPTS	20 A	1	--	0	0	--	2	30 A	PTAC-5	24
25	ROOF RCPTS	20 A	1	--	0	0	--	1	20 A	PTAC-5	26
27	AMP RACK RCPT	20 A	1	--	0	0	--	1	20 A	L-6, L-8 CONTROL	28
29	ELEVATOR LIGHT	20 A	1	--	0	0	--	1	20 A	L-7, L-9 CONTROL	30
31	SCOREBOARD CONTROLLER	20 A	1	--	0	0	--	1	20 A	L-10, L-11 CONTROL	32
33	REF RCPTS	20 A	1	--	0	0	--	2	30 A	DSS-1A/1B	34
35	SECURITY PANEL	20 A	1	--	0	0	--	1	20 A	EXT RCPT	36
37	HAND DRYER	20 A	1	--	0	0	--	1	20 A	EXT RCPT	38
39	HAND DRYER	20 A	1	--	0	0	--	1	20 A	SPARE	40
41	SPARE	20 A	1	--	0	0	--	1	20 A	SPARE	42

NOTES:
1. EXISTING PANEL LOADS FOR REFERENCE.

IMPROVEMENT

PANEL: LCD
LOCATION: NEUTRAL PRESS 202
FED FROM: MDP-C
MOUNTING: Surface
ENCLOSURE: Type 1

BRANCH PANELBOARD - NORMAL POWER
VOLTAGE: 120/240
PHASE: 1
WIRES: 3

A.I.C.: 3500
MAINS: 400 A
M.C.B.: 300 A

LOAD TYPE: L=LIGHTING, R=RECEPTACLE, M=MOTORS, Ho=HOSPITAL, K=KITCHEN, H=HEAT, Mi=MISC

CKT	LOAD DESCRIPTION	TRIP	POLE	TYPE	A	B	TYPE	POLE	TRIP	LOAD DESCRIPTION	CKT	
1	PRESSBOX RCPTS	20 A	1	--	0	0	--	1	20 A	PRESSBOX LITS AND RCPTS	2	
3											4	
5	DSS-2A/2B (2)	15 A	2	M	840	720	--	1	15 A	R TEAM 1 201 (3)	6	
7										EF-6	8	
9	DSS-3A/3B (2)	15 A	2	M	840	840	0	--	2	15 A	EW-2	10
11											12	
13	R NEUTRAL PRESS 202 (3)	20 A	1	R	720	0	--	1	15 A	EF-4	14	
15	R TEAM 2 203 (3)	20 A	1	R	720	0	--	2	15 A	PTAC-4	16	
17	AMP RACK RCPT	20 A	1	--	0	0	--	1	20 A	AMP RACK RCPT	18	
19	MACHINE RM	20 A	1	--	0	0	--	1	20 A	AMP RACK RCPT	20	
21	SPARE	80 A	2	--	0	0	--	2	20 A	AMP RACK RCPT	22	
23	ROOF RCPTS	20 A	1	--	0	0	--	2	30 A	PTAC-5	24	
25	ROOF RCPTS	20 A	1	--	0	0	--	1	20 A	PTAC-5	26	
27	AMP RACK RCPT	20 A	1	--	0	0	--	1	20 A	L-6, L-8 CONTROL	28	
29	ELEVATOR LIGHT	20 A	1	--	0	0	--	1	20 A	L-7, L-9 CONTROL	30	
31	SCOREBOARD CONTROLLER	20 A	1	--	0	0	--	1	20 A	L-10, L-11 CONTROL	32	
33	REF RCPTS	20 A	1	--	0	0	--	2	30 A	DSS-1A/1B	34	
35	SECURITY PANEL	20 A	1	--	0	0	--	1	20 A	EXT RCPT	36	
37	HAND DRYER	20 A	1	--	0	0	--	1	20 A	EXT RCPT	38	
39	HAND DRYER	20 A	1	--	0	0	--	1	20 A	SPARE	40	
41	SPARE	20 A	1	--	0	0	--	1	20 A	SPARE	42	

NOTES:
1. EXISTING PANEL LOADS SHOWN FOR REFERENCE.
2. CONNECT NEW LOAD TO EXISTING BREAKER.
3. PROVIDE NEW BREAKER AS SCHEDULED.

LCD LOAD CALCULATION

EXISTING LOAD PER PHASE 3/4 DRAWINGS	60.9 KW
REMOVED LOAD	(33.8) KW
ADDED LOAD	5.9 KW
NEW TOTAL LOAD (KW)	33 KW
NEW TOTAL LOAD (AMPS)	137.5 A
REMAINING SPARE CAPACITY (300A MCB)	162.5 A

4/7/2023 9:01:10 AM
BULK:3001010567:1003_StrykerRemoval170567_Stryker-Additions_MEP.rvt