

STREET IMPROVEMENTS SAWMILL CREEK ADDITION - PHASE 3

GENERAL NOTES

Utility service lines, poles, valve boxes, meters, and et cetera are to be adjusted as necessary by others prior to construction unless the plans specifically call for their adjustment by the Contractor or unless the plans specifically identify a utility to be adjusted by its owner during construction. Existing utilities and their location, as shown on the plans, represent the best information obtainable for design. The Contractor will be required to work around existing utilities within the right-of-way which do not conflict with proposed construction.

A saw cut of at least one-half the depth of existing surface courses or one-fourth the depth of existing total pavement thickness shall be provided at locations where proposed construction abuts an existing surface course or pavement for which partial removal of that surface or pavement is required, except when such saw cuts are within three (3) feet of an existing joint the limits of removal shall be extended to the existing joint. Such saw cuts will not be paid for directly and this cost shall be considered as subsidiary to the removal of the surface or pavement.

Rubble from the removal of miscellaneous structures and excess excavation which is to be wasted shall be disposed of on sites to be provided by the Contractor. These sites shall be approved by the Engineer as to suitability, appearance and site location. Locations that, in the opinion of the Engineer, will leave an unsightly appearance will not be approved.

All disposal sites must be approved by the Kansas Department of Health and Environment. Material either stockpiled or disposed of in a flood plain would require a Kansas State Board of Agriculture permit. Any material dumped in waters of the United States or wetlands is subject to U.S. Corps permitting regulations. Any material buried or stockpiled beyond approved of Engineers construction limits would require additional archeological investigations unless buried in a previously approved borrow location.

The Engineer shall take field ties to all quarter section corners. The Contractor shall set a City survey monument in the required location where such quarter section corners fall within the limits of pavement construction. Survey monuments will be furnished by the City. The Engineer will accurately locate and install the iron at the quarter section corner. This work will not be paid for directly, but shall be considered subsidiary to the other pay items of work in the contract.

Trees and shrubs in public right-of-way which are in direct conflict with proposed new construction shall be removed by the Contractor with the Engineer's approval. Trees and shrubs which are not in direct conflict with proposed new construction shall be saved and protected from damage.

The Contractor shall be responsible for preserving property irons. The Contractor will be required to re-establish any property irons which are damaged or destroyed by his construction operations. Such irons shall be re-established by a licensed land surveyor in accordance with state laws.

Contractor will be required to provide a minimum advance notice of twenty-four (24) hours to utility companies prior to starting any excavation as follows:

Kansas One-Call 687-2470

The Contractor must notify the following in case of an emergency:

Cox Communications	262-0661
Kansas Gas Service	383-8600
K.G.&E. Electric	383-8600
Peoples Natural Gas Company	1-800-303-0357
Southwestern Bell Telephone Company	1-800-286-8313
City of Wichita Water Department	262-6000
City of Wichita Sewer Maintenance	262-6000

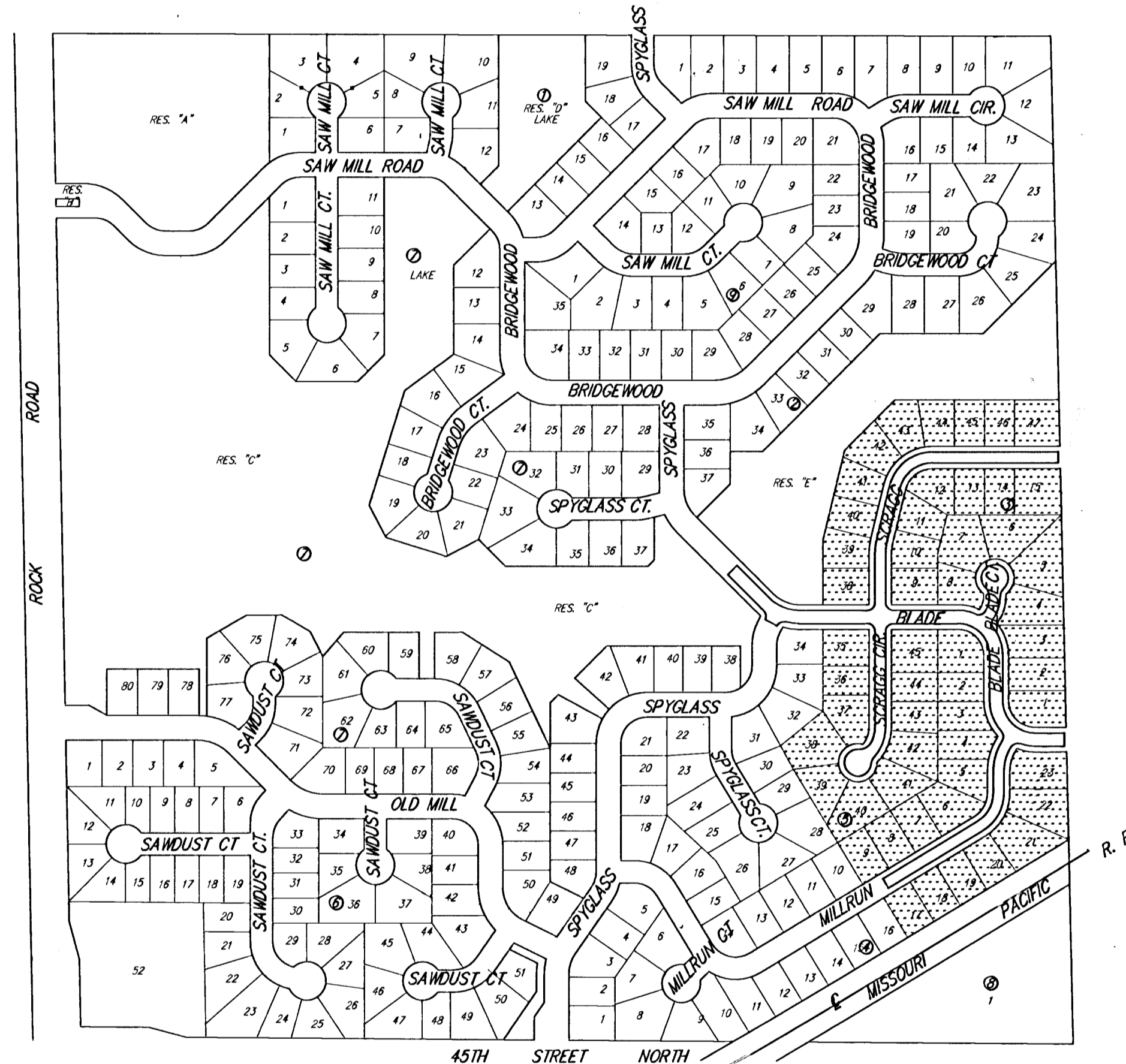
Inlet sediment barriers shall be constructed for all inlets in this project. See detail sheet 9.

All excess excavation from this project shall be kept on site, and wasted in the area depicted on the Plat copy sheet 46.

Subdivision Bench Marks shall be "Flat Survey Markers No. 8134-08 3" top diameter" provided by Kansas Blue Print Co., Inc. Bench mark installation cost to be subsidiary to curb & gutter.

BLADE, FROM THE EAST LINE OF LOT 1, BLOCK 3 TO 360' WEST OF THE WEST LINE LOT 38, BLOCK 2
BLADE COURT, FROM FROM THE SOUTH LINE OF SCRAGG TO AND INCLUDING CUL-DE-SAC
SCRAGG COURT, FROM FROM THE SOUTH LINE OF SCRAGG TO AND INCLUDING CUL-DE-SAC
SCRAGG, FROM THE NORTH LINE BLADE TO THE EAST LINE LOT 47, BLOCK 2

PROJECT NO. 472-84123
OCA # 765921



Scale: 1" = 300'

BENCH MARKS

1'1" SOUTHWEST CORNER OF HEADWALL OF ROCK ON THE WEST SIDE OF ROCK ROAD 1060' NORTH OF THE INTERSECTION OF ROCK ROAD AND 45TH STREET NORTH

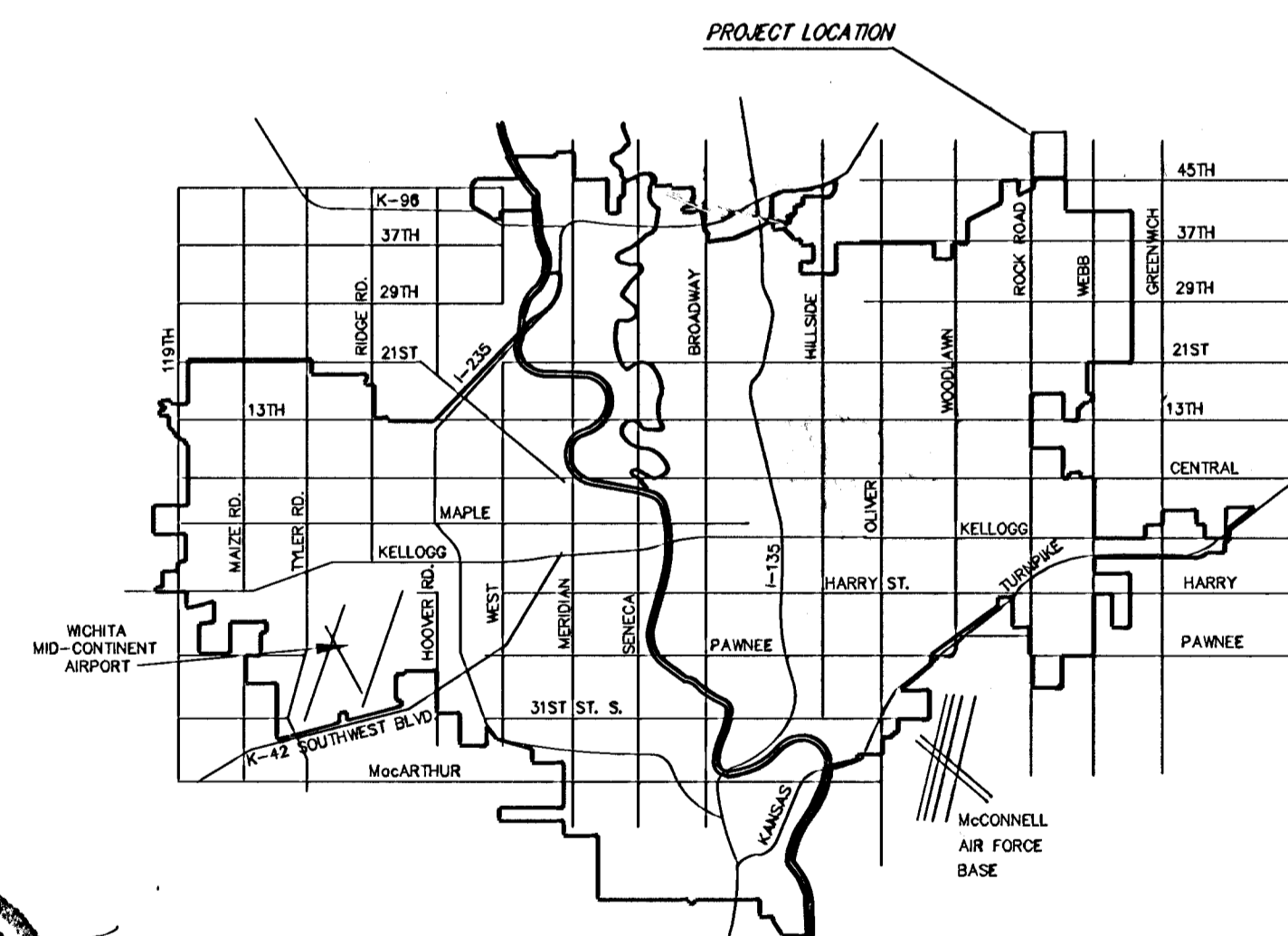
ELEVATION: 1379.84 (MSL)

1'1" NORTHEAST CORNER OF HEADWALL OF ROCK ON THE EAST SIDE OF ROCK ROAD, WILLOWBEND 2ND ADDITION.

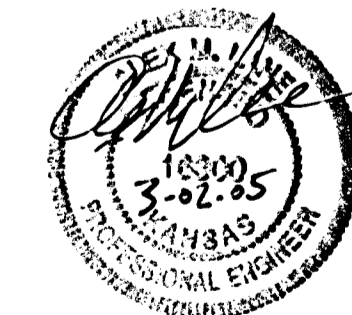
ELEVATION: 1374.39 (MSL)

INDEX OF SHEETS

1. Title Sheet
2. 35' Pavement Detail
3. 29' Pavement Detail
4. Valley Gutter Details
5. Signing Details
- 6-8. Blade
9. Millrun
10. Blade Ct
- 11-12. Scragg Ct
13. Scragg Cir
14. Erosion Control Plan
- 15-18. Erosion Control Details
19. Grading Plan
20. Key Map
21. Shallow Type "P" Manhole
22. Type 1-A Inlet
- 23-26. Storm Water Sewer
- 27-36. Cross-Sections
37. Earthwork Quantities
38. Final Plat



VICINITY MAP

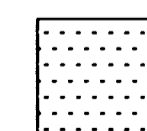


PROJECT SUMMARY

Project Length: 3162 l.f.
Dirt Work:

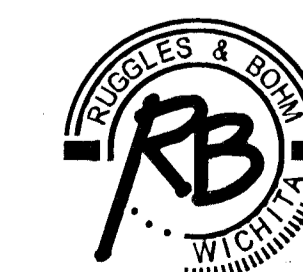
Cut: 5449 cu. yds.
Fill: 908 cu. yds.

Overage : Cut-Fill = 4532 cu. yds.



IMPROVEMENT DISTRICT

CITY OF WICHITA, KANSAS
JAMES L. ARMOUR, P.E. - ACTING CITY ENGINEER



Ruggles & Bohm, P.A.
Engineering, Surveying, Land Planning
924 North Main (316) 264-8008
Wichita, Kansas 67203 (316) 264-4621 fax
www.rbkansas.com E-mail: info@rbkansas.com