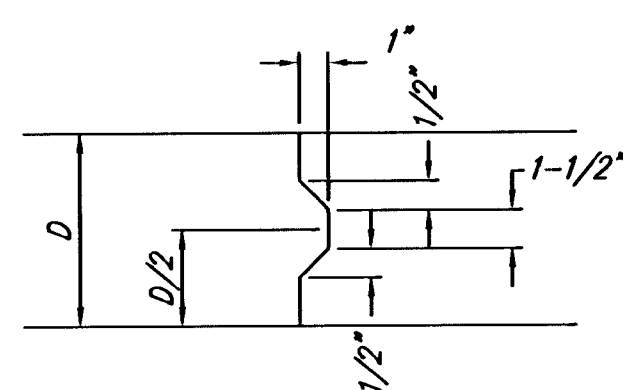
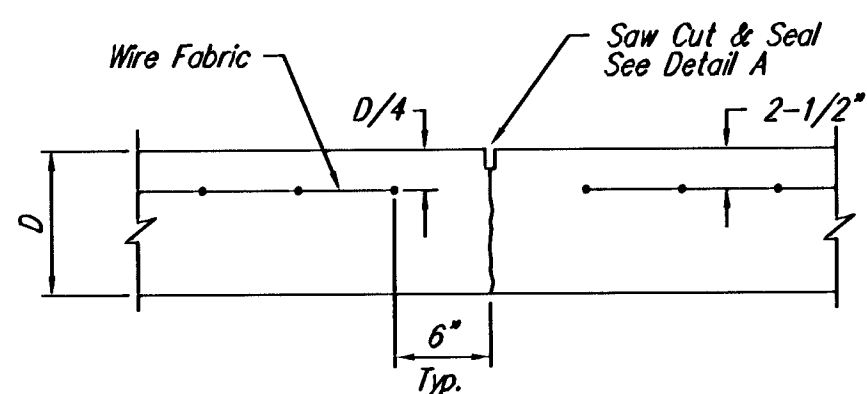


**EXPANSION JOINT**

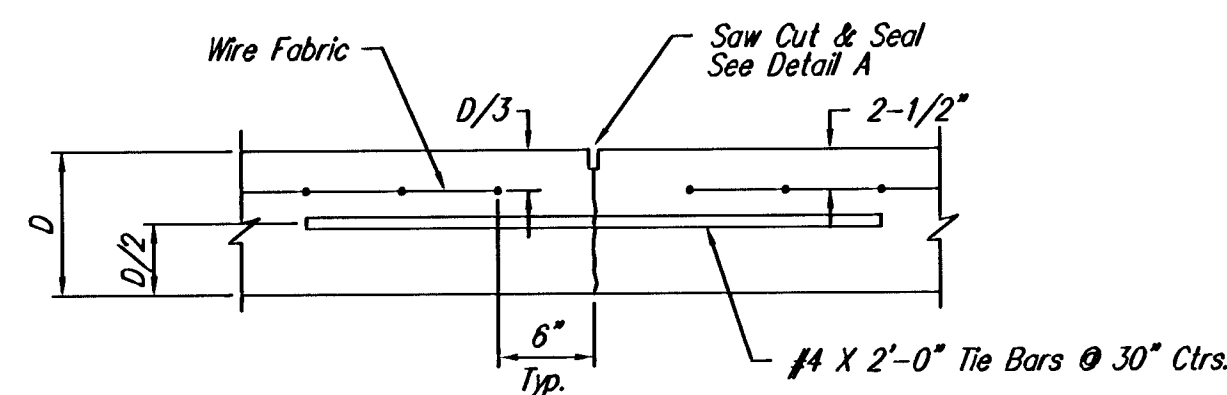
NOTE: Extra Thickness to be Subsidiary to Price of Square Yards Pavement



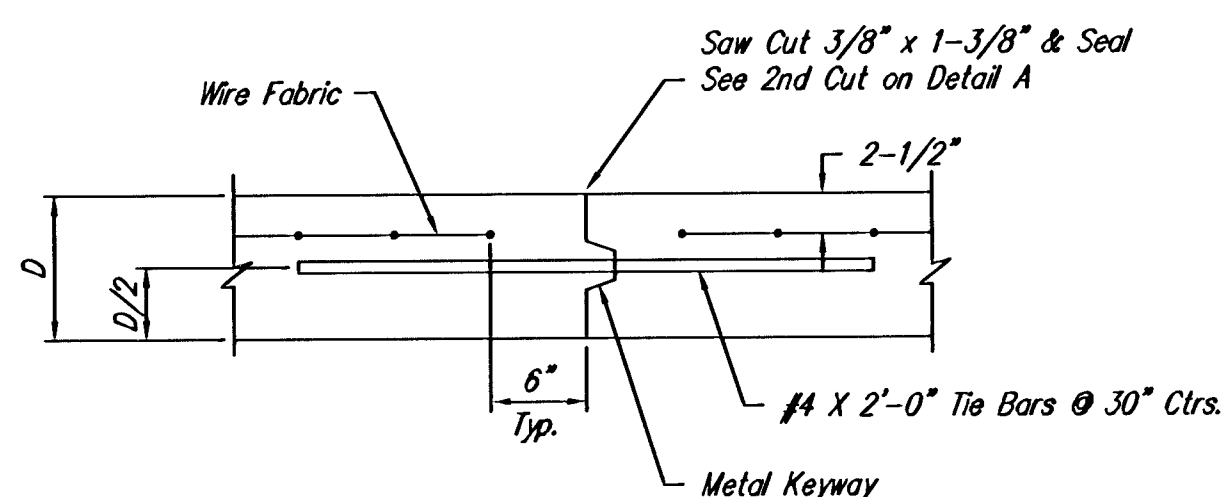
**KEYWAY DETAIL**



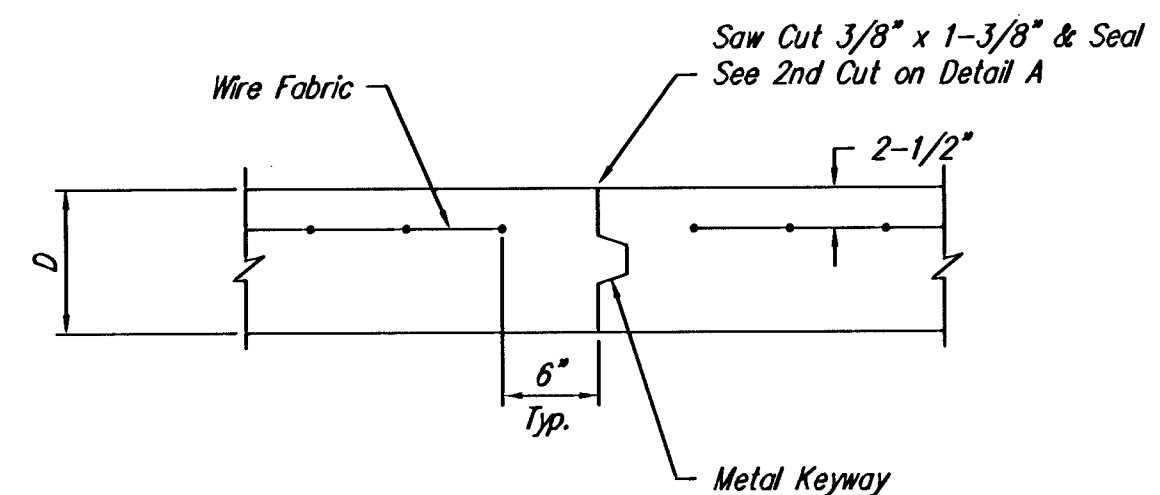
**CONTRACTION JOINT DETAIL (C.J.)**



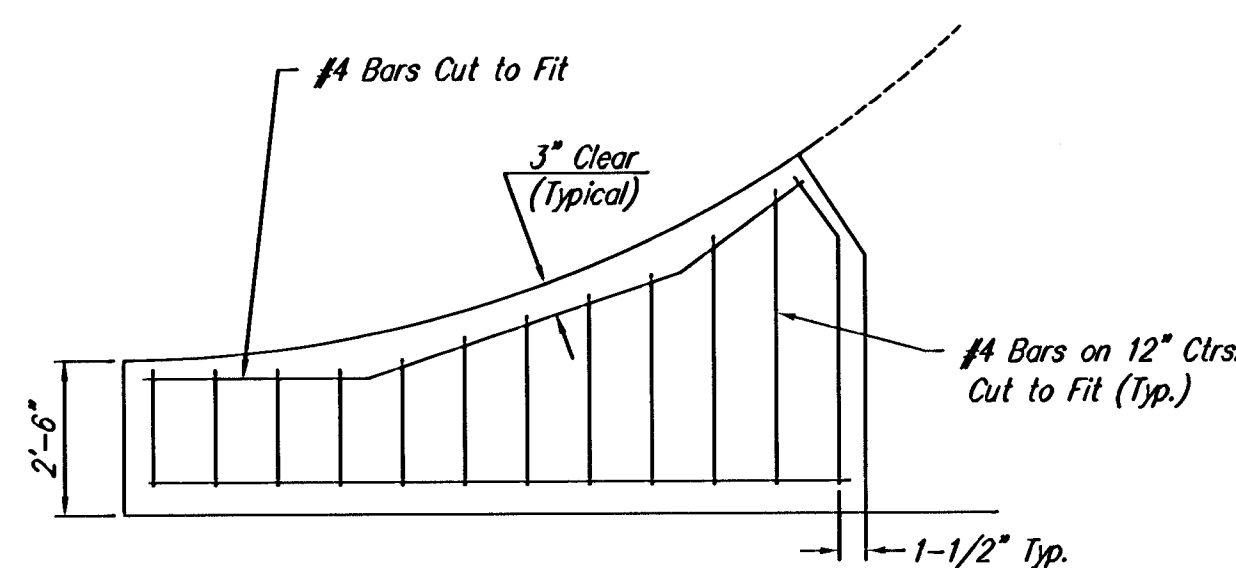
**LONGITUDINAL JOINT DETAIL (L.J.)**



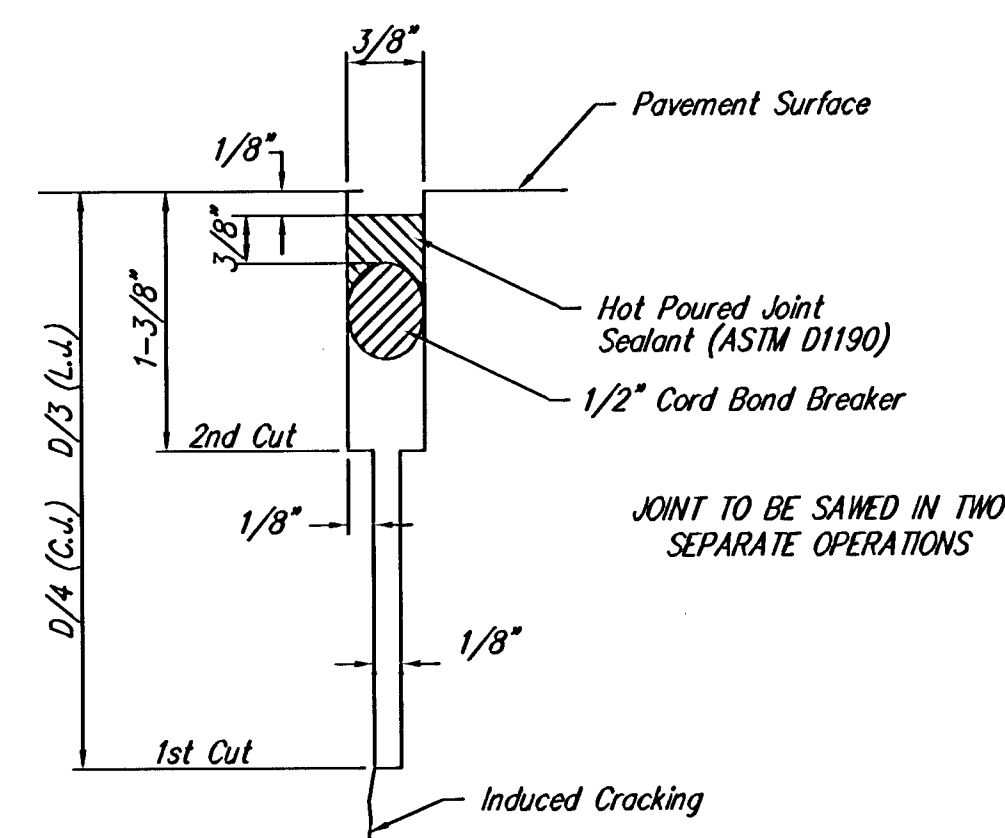
**OPTIONAL LONGITUDINAL JOINT DETAIL (L.J.)**



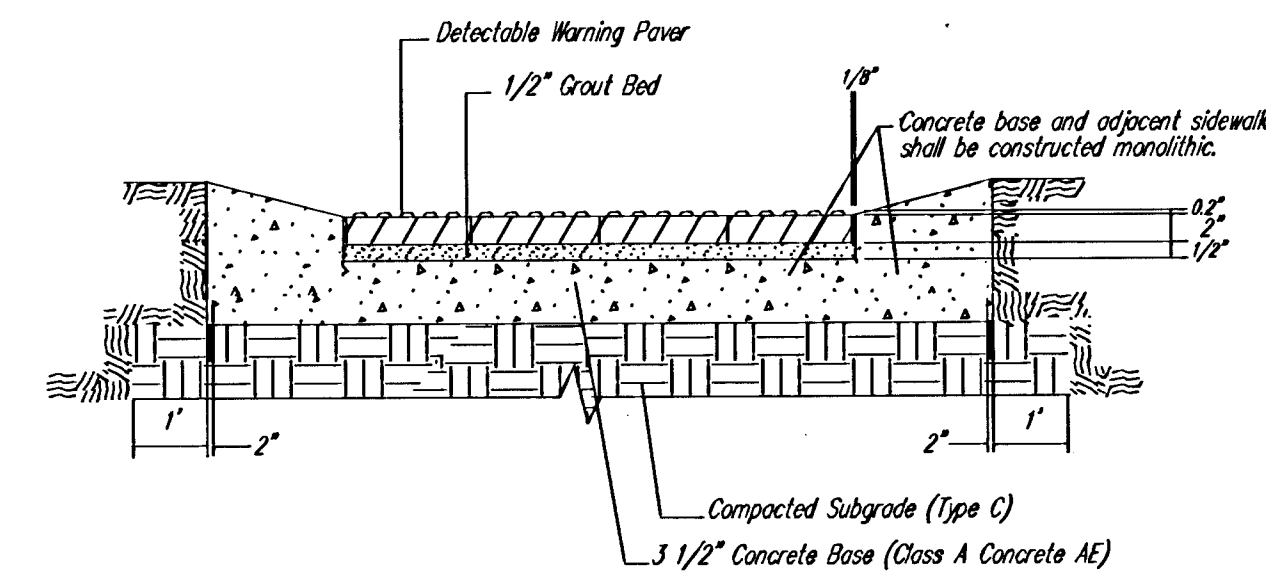
**OPTIONAL CONTRACTION JOINT**



**WING REINFORCING DETAIL**

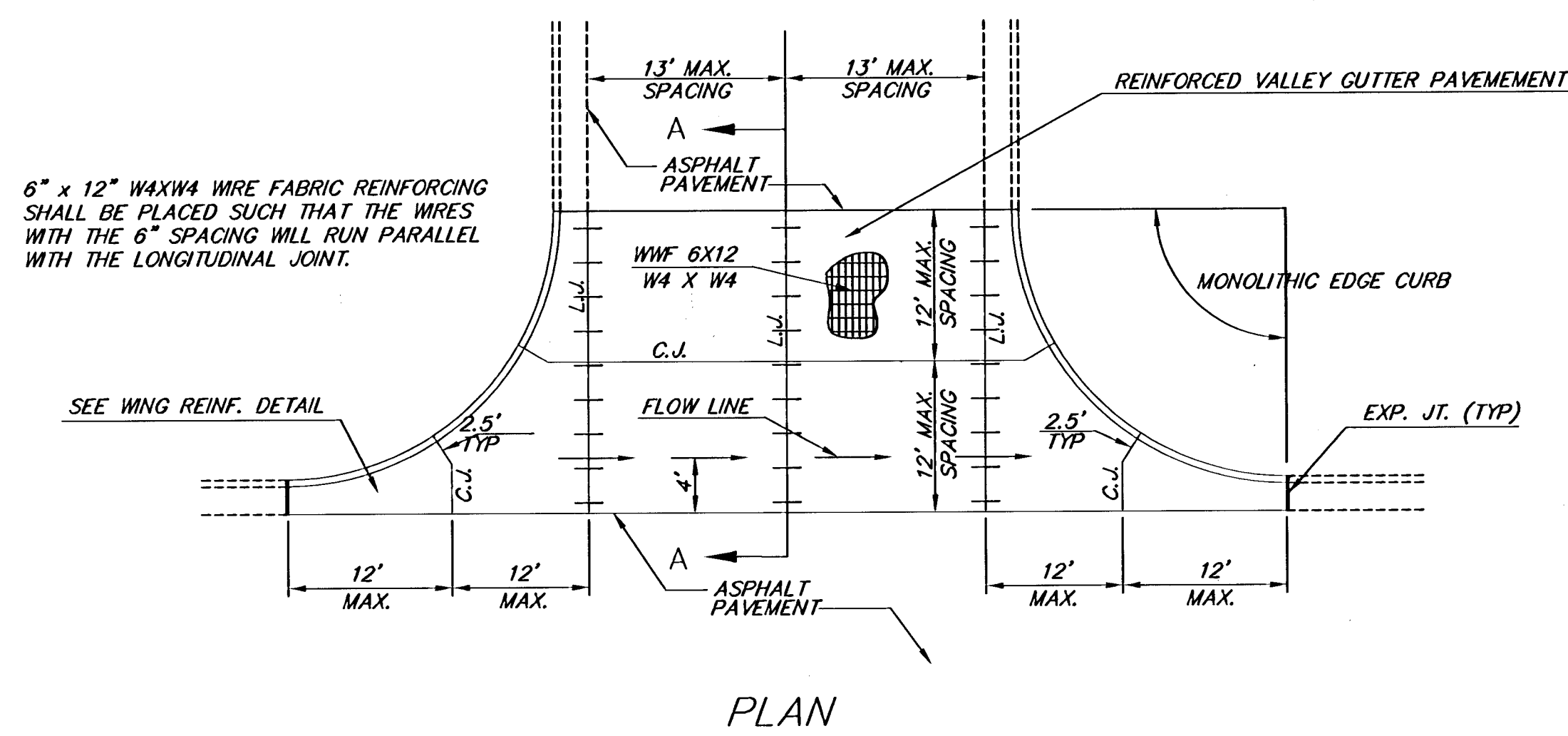
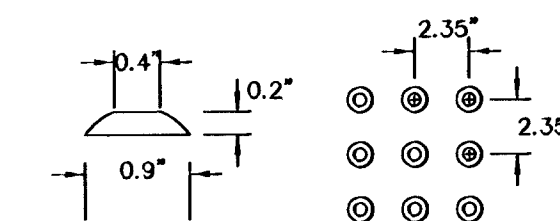


**SAW JOINT DETAIL**

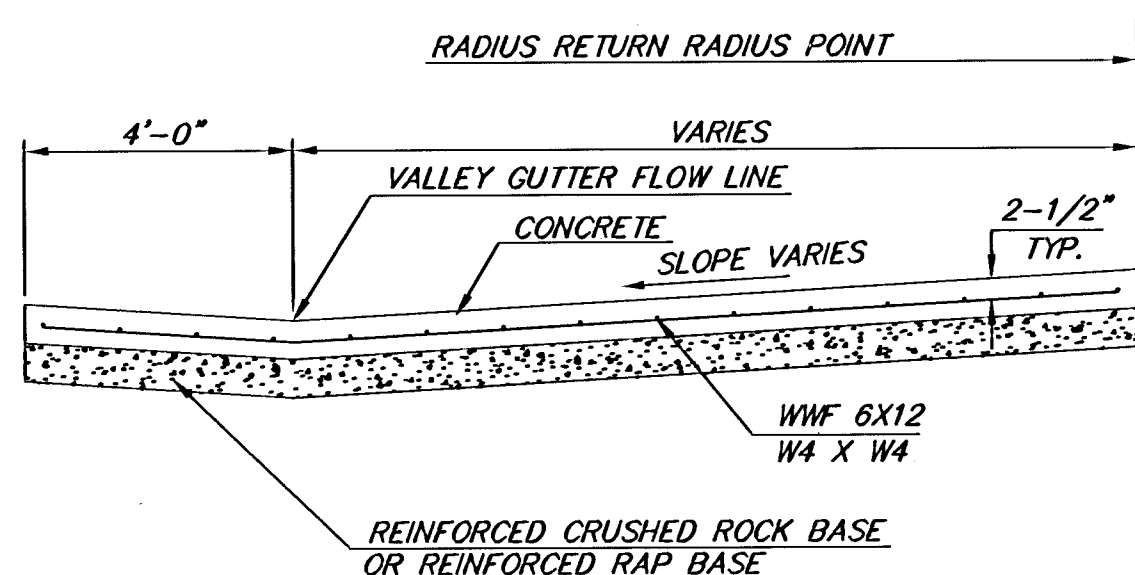


**TYPICAL SECTION DETECTABLE WARNING PAVER SECTION A-A**

NOTE: HANOVER DETECTABLE WARNING PAVERS (OR AN APPROVED ALTERNATE) SHALL BE USED IN ALL WHEELCHAIR RAMPS. THE 11 3/4" RED 15" PAVER SHALL BE USED IN ALL APPLICATIONS.  
 HANOVER ARCHITECTURAL PRODUCTS  
 240 BENDER ROAD  
 HANOVER, PA 17331  
 1-717-637-0500  
 www.hanoverpavers.com



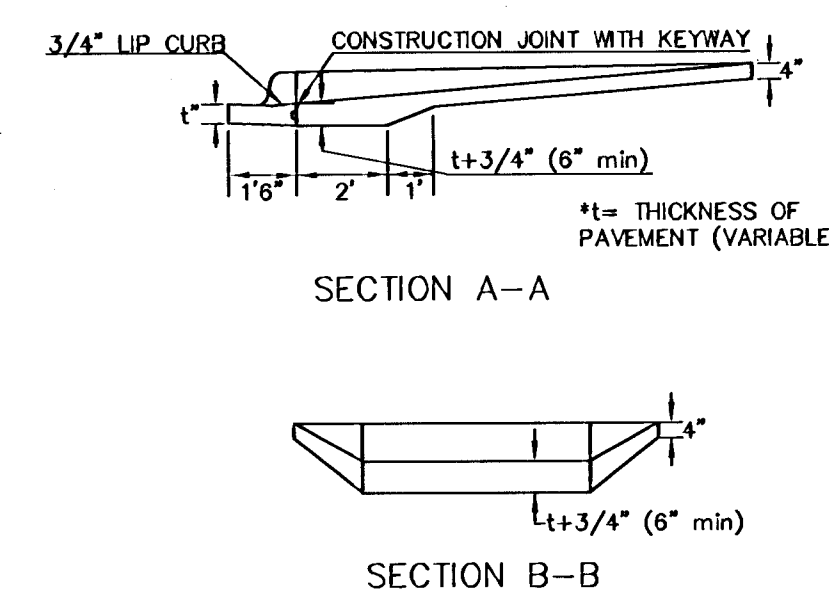
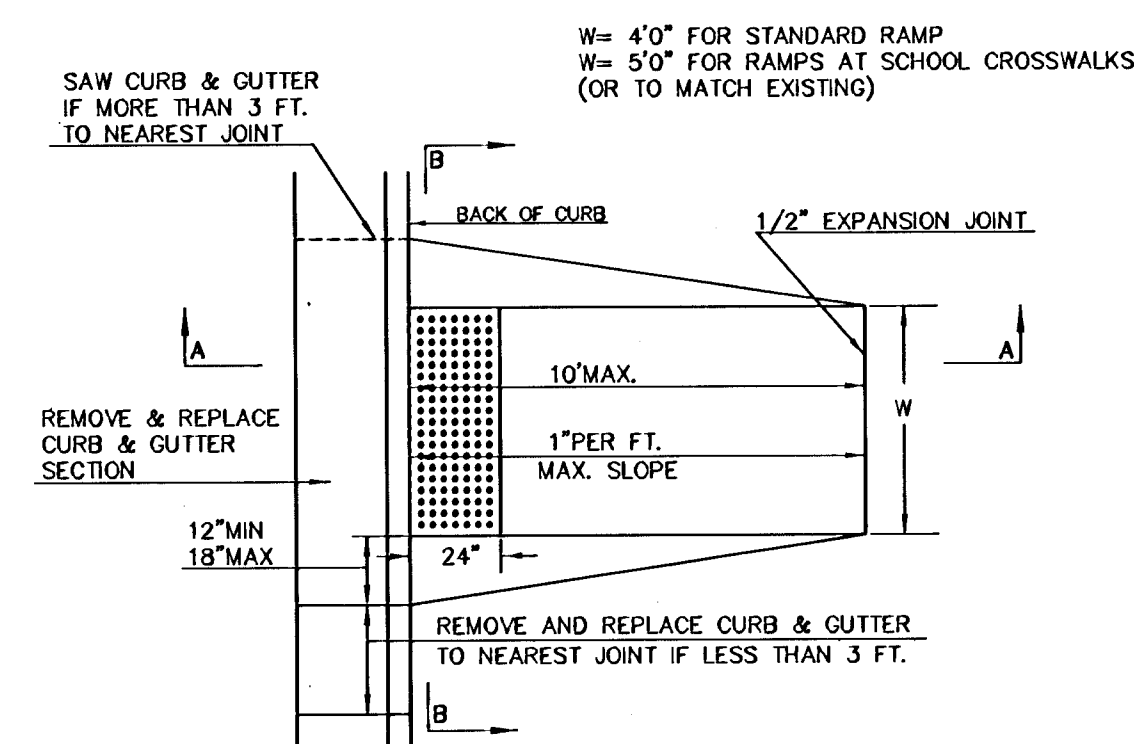
**PLAN**



**SECTION A-A**

**REINFORCED VALLEY GUTTER DETAIL**

**STANDARD WHEELCHAIR RAMP CONSTRUCTION DETAIL FOR STREETS WITH COMBINED CURB & GUTTER (TYPE A)**



**SECTION A-A**

**SECTION B-B**

<p>THE CITY OF WICHITA</p> <p>CITY ENGINEER'S OFFICE          CITY HALL - SEVENTH FLOOR          455 NORTH MAIN STREET          WICHITA, KANSAS 67202          (316) 268-5501          (316) 268-4114 FAX</p>	<b>VALLEY GUTTER DETAILS</b>	
	<b>WHEELCHAIR RAMP DETAILS</b>	
PROJECT NUMBER <b>472-84123</b>	OCA # <b>765921</b>	
DATE <b>MAR 96</b>	SHEET <b>4 OF 38</b>	