

J:\PROJECTS\2022\2201010526\_1\TIER1\_ESTANCIA COMMERCIAL SECOND\00 220526 CAD\SHOTS\05 CIVIL\WFR222626-05-3500.DWG  
 PLOTED: Friday, July 07, 2023 @ 01:26PM

WATER POINTS			
Point #	Northing	Easting	Desc.
3000	1711573.50	1623208.36	TIE IN
3001	1711578.15	1623211.26	BEND
3002	1711803.14	1623205.03	TEE
3003	1711910.13	1623202.07	BLOWOFF
3004	1711462.14	1623876.11	TIE IN
3005	1711815.95	1623866.32	BLOWOFF
3006	1711804.35	1623249.02	BLOWOFF
3007	1711480.47	1623875.61	BEND
3008	1711482.85	1623875.54	BEND
3009	1711502.84	1623874.99	BEND
3010	1711505.58	1623874.91	BEND

PLAT POINTS			
Point #	Northing	Easting	Desc.
500	1711607.28	1622983.35	PI
501	1711732.38	1622979.88	PI
502	1712030.60	1623015.17	PI
503	1712190.24	1623661.75	PI
504	1712202.08	1624203.86	PI
505	1712213.50	1624710.67	PI
506	1712258.46	1625209.75	PI
507	1712264.39	1625524.30	PI
508	1711584.59	1625540.26	PI
509	1711559.69	1624220.29	PI
510	1711592.29	1624394.04	PI

PLAT POINTS			
Point #	Northing	Easting	Desc.
511	1711620.85	1624546.27	PI
512	1711627.80	1624914.53	PI
513	1711693.79	1624913.29	PI
514	1711692.96	1624869.30	PI
515	1711730.95	1624868.58	PI
516	1711729.71	1624802.59	PI
517	1711691.71	1624803.31	PI
518	1711686.84	1624545.02	PI
519	1711654.24	1624371.28	PI
520	1711625.68	1624219.05	PI
521	1711569.58	1624090.61	PI

PLAT POINTS			
Point #	Northing	Easting	Desc.
522	1711467.26	1623859.15	PI
523	1711460.83	1623626.73	PI
524	1711529.65	1623312.66	PI
525	1711567.77	1623235.56	PI
526	1711609.05	1623047.21	PI



WATER DISTRIBUTION PLANS FOR  
**ESTANCIA COMMERCIAL 2ND ADD.**  
 PHASE 1

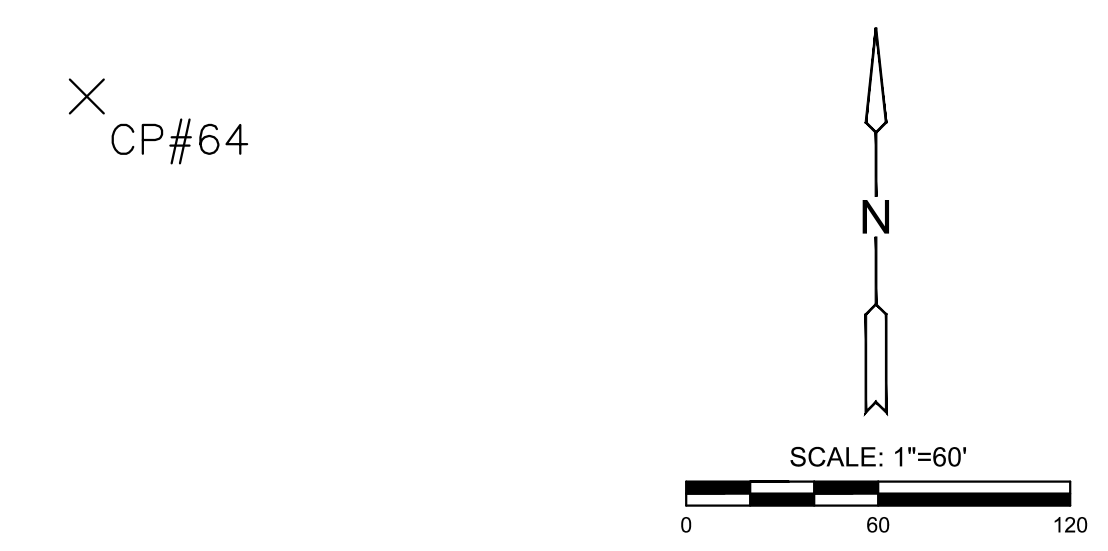
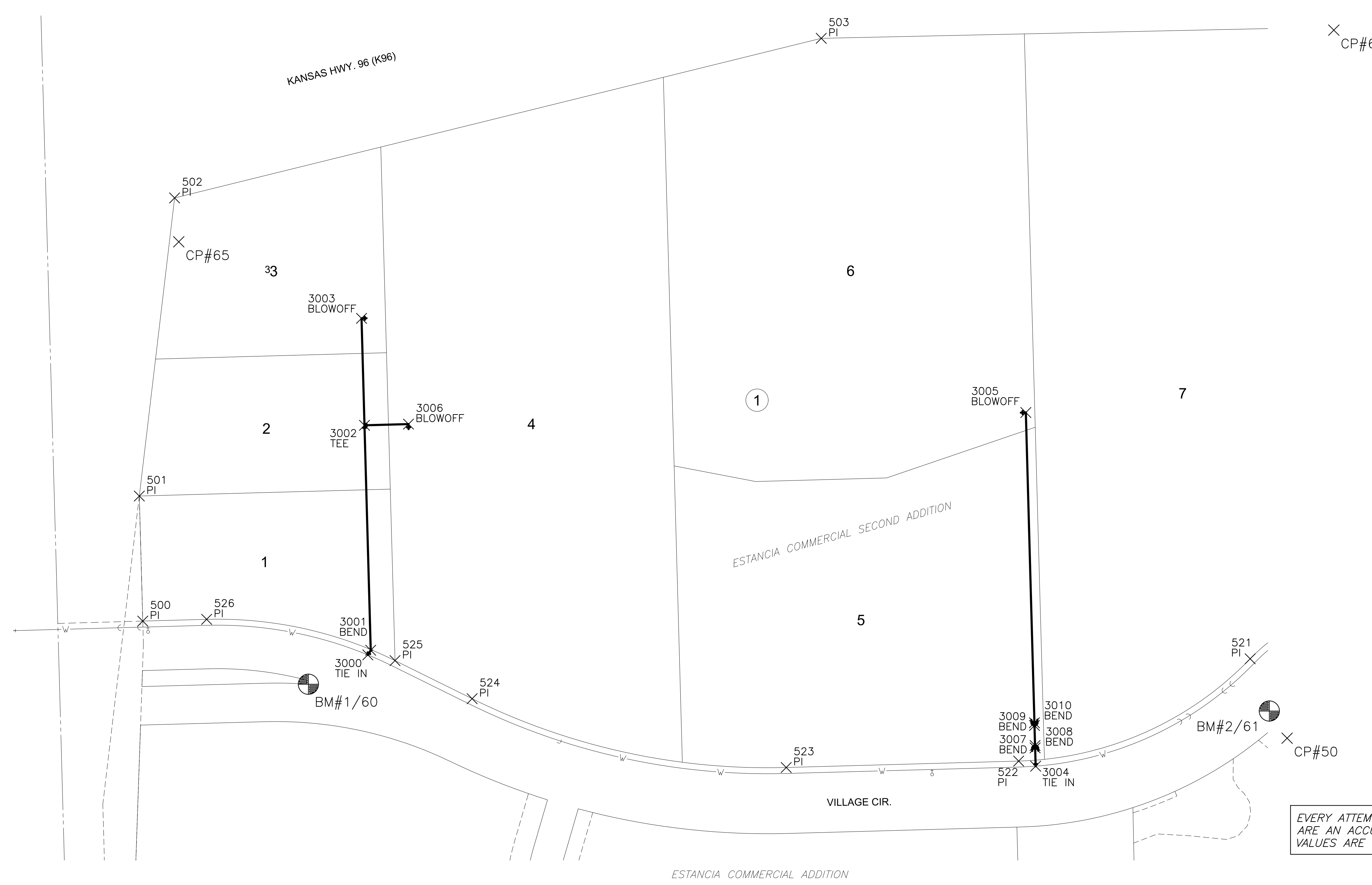
©2023  
 MKEC Engineering  
 All Rights Reserved  
 www.mkec.com  
 These drawings and their contents, including, but not limited to, all concepts, designs, & ideas are the exclusive property of MKEC Engineering (MKEC), and may not be used or reproduced in any way without the express consent of MKEC.

**BUBBLE MAP**

PROJECT NO.	448-2023-021983	
DATE	JULY 2023	
SCALE	1" = 60'	
DESIGNED	DRAWN	CHECKED
DFL	JWC	SPE

NO.	REVISION	DATE

SHEET NO.  
05 OF 11



**CONTROL POINTS**

- Control Points:
- CP 50  
N: 1711490.123 E: 1624127.580 EL: 1335.950  
Description of control point: Aluminum Control Cap on 24" 5/8" Rebar
  - CP 59  
N: 1711545.855 E: 1622839.203 EL: 1335.71  
Description of control: X cut Top of Curb
  - CP 60  
N: 1711544.080 E: 1623148.911 EL: 1339.38  
Description of control point: X cut Top of Curb
  - CP 61  
N: 1711517.255 E: 1624109.772 EL: 1334.22  
Description of control point: X cut Top of Curb
  - CP 62  
N: 1711633.785 E: 1625508.886 EL: 1337.01  
Description of control point: Aluminum Control Cap on 24" by 5/8" Rebar
  - CP 63  
N: 1712224.800 E: 1625339.381 EL: 1335.52  
Description of control point: Red Control Cap on 24" by 5/8" Rebar
  - CP 64  
N: 1712198.457 E: 1624202.448 EL: 1339.92  
Description of control point: Red Control Cap on 24" by 5/8" Rebar
  - CP 65  
N: 1711986.686 E: 1623019.316 EL: 1336.365  
Description of control point: Red Control Cap on 24" by 5/8" Rebar
- Benchmarks:
- BM 1/60  
N: 1711544.080 E: 1623148.911 EL: 1339.38  
Description of control point: X cut Top of Curb
  - BM 2/61  
N: 1711517.255 E: 1624109.772 EL: 1334.22  
Description of control point: X cut Top of Curb

EVERY ATTEMPT HAS BEEN MADE TO INSURE ALL COORDINATE VALUES SHOWN ARE AN ACCURATE AND TRUE REPRESENTATION OF THE CURRENT PLANS. ALL VALUES ARE TO BE CONFIRMED WITH THE FINAL SIGNED PLAN SET BEFORE USE.

ESTANCIA COMMERCIAL ADDITION