

J:\PROJECTS\2022\2201010526_1\TIER1_ESTANCIA COMMERCIAL SECOND\00 220526 CAD\SH1505 CIVIL\SWPH122526-05-1500 PH1.DWG
 RUTTED: Friday, July 07, 2023 @ 01:17PM

PLAT POINTS			
Point #	Northing	Easting	Desc.
500	1711607.28	1622983.35	PI
501	1711732.38	1622979.88	PI
502	1712030.60	1623015.17	PI
503	1712190.24	1623661.75	PI
504	1712202.08	1624203.86	PI
505	1712213.50	1624710.67	PI
506	1712258.46	1625209.75	PI
507	1712264.39	1625524.30	PI
508	1711584.59	1625540.26	PI
509	1711559.69	1624220.29	PI

PLAT POINTS			
Point #	Northing	Easting	Desc.
510	1711592.29	1624394.04	PI
511	1711620.85	1624546.27	PI
512	1711627.80	1624914.53	PI
513	1711693.79	1624913.29	PI
514	1711692.96	1624869.30	PI
515	1711730.95	1624868.58	PI
516	1711729.71	1624802.59	PI
517	1711691.71	1624803.31	PI
518	1711686.84	1624545.02	PI
519	1711654.24	1624371.28	PI

PLAT POINTS			
Point #	Northing	Easting	Desc.
520	1711625.68	1624219.05	PI
521	1711569.58	1624090.61	PI
522	1711467.26	1623859.15	PI
523	1711460.83	1623626.73	PI
524	1711529.65	1623312.66	PI
525	1711567.77	1623235.56	PI
526	1711609.05	1623047.21	PI

SWS POINTS			
Point #	Northing	Easting	Desc.
4000	1711486.27	1623512.31	MH
4001	1711477.82	1623590.12	MH
4002	1711490.10	1623883.34	MH
4003	1711530.71	1624033.78	MH
4004	1711538.19	1624044.32	MH
4005	1711516.92	1624047.88	INLET
4006	1711471.30	1624093.02	ES
4007	1711826.17	1623874.04	MH
4008	1711640.73	1624177.78	MH
4009	1711657.80	1624254.03	MH

CONTROL POINTS

Control Points:

CP 50
 N: 1711490.123 E: 1624127.580 EL: 1335.950
 Description of control point: Aluminum Control Cap on 24" 5/8" Rebar

CP 59
 N: 1711545.855 E: 1622839.203 EL: 1335.71
 Description of control point: X cut Top of Curb

CP 60
 N: 1711544.080 E: 1623148.911 EL: 1339.38
 Description of control point: X cut Top of Curb

CP 61
 N: 1711517.255 E: 1624109.772 EL: 1334.22
 Description of control point: X cut Top of Curb

CP 62
 N: 1711633.785 E: 1625508.886 EL: 1337.01
 Description of control point: Aluminum Control Cap on 24" by 5/8" Rebar

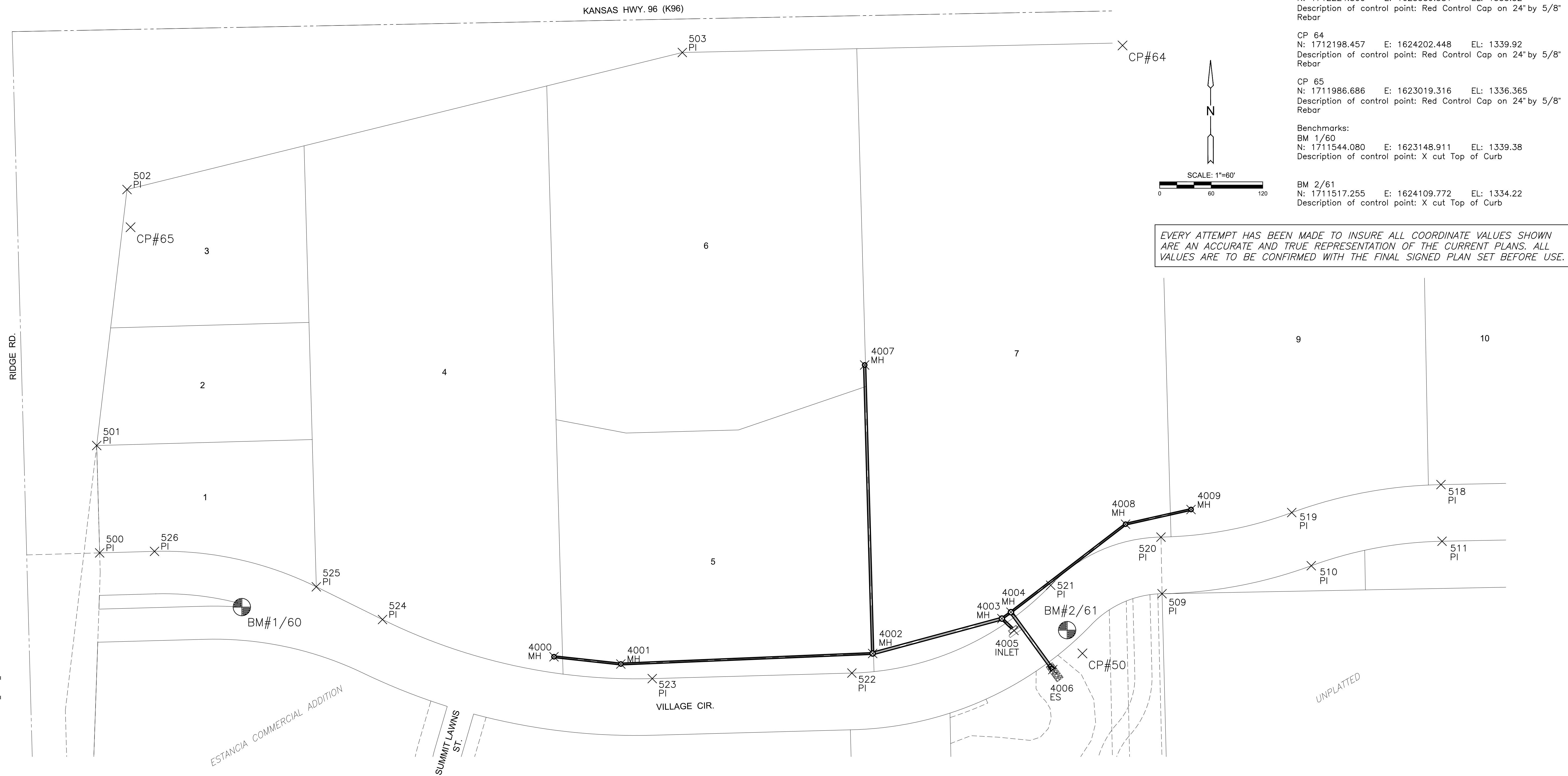
CP 63
 N: 1712224.800 E: 1625339.381 EL: 1335.52
 Description of control point: Red Control Cap on 24" by 5/8" Rebar

CP 64
 N: 1712198.457 E: 1624202.448 EL: 1339.92
 Description of control point: Red Control Cap on 24" by 5/8" Rebar

CP 65
 N: 1711986.686 E: 1623019.316 EL: 1336.365
 Description of control point: Red Control Cap on 24" by 5/8" Rebar

Benchmarks:
 BM 1/60
 N: 1711544.080 E: 1623148.911 EL: 1339.38
 Description of control point: X cut Top of Curb

BM 2/61
 N: 1711517.255 E: 1624109.772 EL: 1334.22
 Description of control point: X cut Top of Curb



STORMWATER DRAINAGE PLANS FOR
ESTANCIA COMMERCIAL 2ND ADD.
 PHASE 1

©2023
 MKEC Engineering
 All Rights Reserved
 www.mkec.com
 These drawings and their contents, including, but not limited to, all concepts, designs, & ideas are the exclusive property of MKEC Engineering (MKEC), and may not be used or reproduced in any way without the express consent of MKEC.

BUBBLE MAP

PROJECT NO.	458-2023-085544	
DATE	JULY 2023	
SCALE	1" = 60'	
DESIGNED	DFL	
DRAWN	JWC	
CHECKED	SPE	
NO.	REVISION	DATE
SHEET NO.		
09 OF 15		