

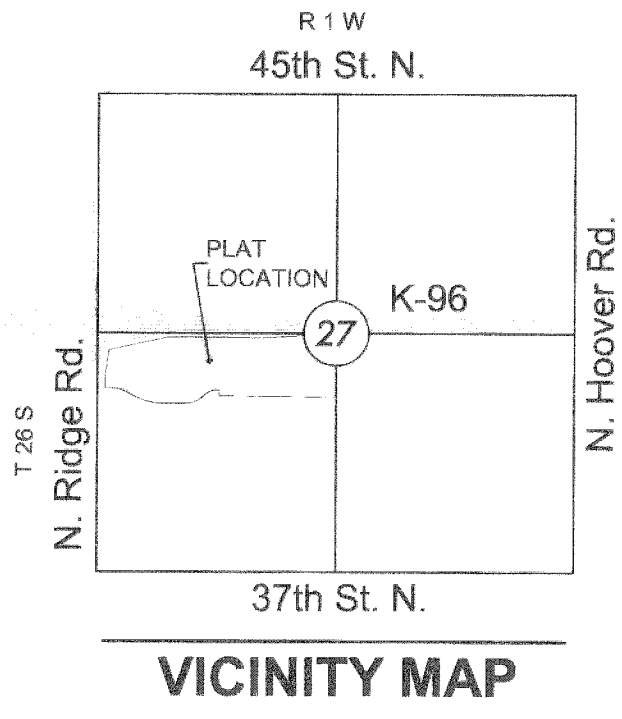
Estancia Commercial Second Addition (SUB2022-00036)

# FINAL PLAT

## ESTANCIA COMMERCIAL SECOND ADDITION

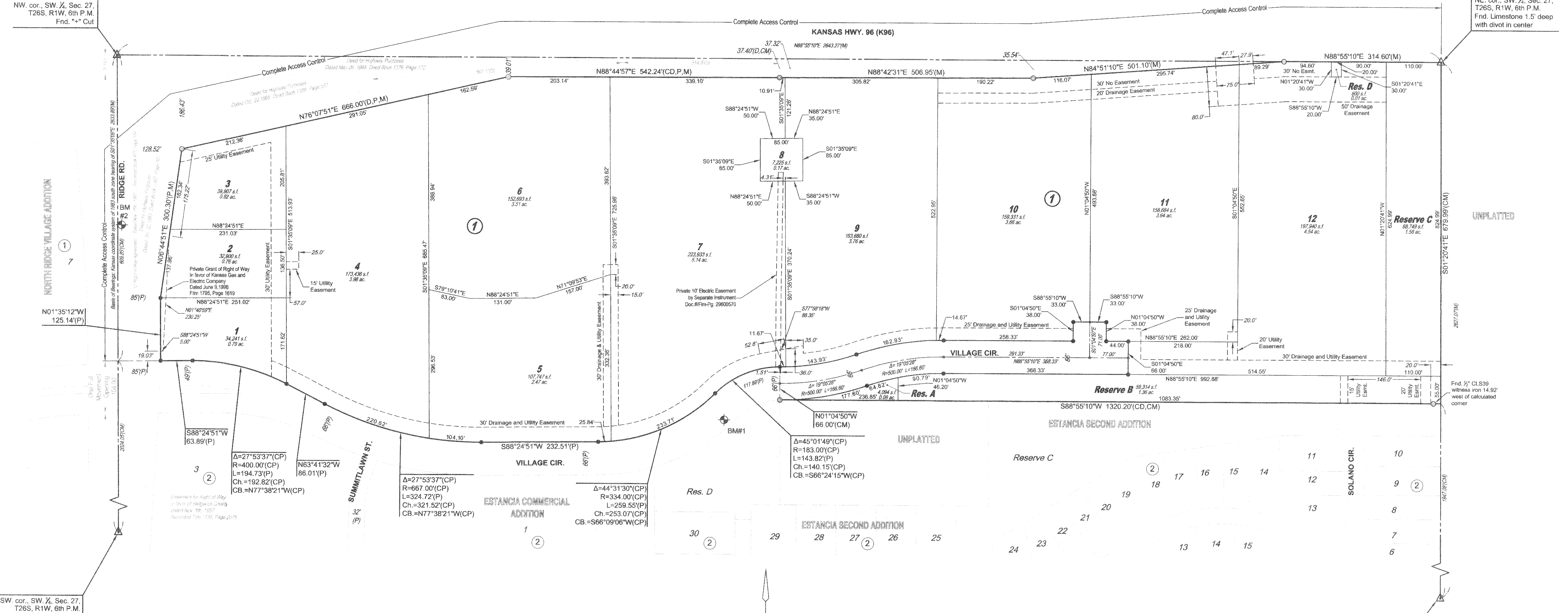
AN ADDITION TO WICHITA, SEDGWICK COUNTY, KANSAS

MINIMUM PAD ELEVATIONS (LOWEST OPENINGS)		
LOTS Inclusive	BLOCK	ELEVATION NAVD 88
12	1	1337.9



NW cor., SW ¼, Sec. 27,  
T26S, R1W, 6th P.M.  
Fnd. "+- Cut"

NE cor., SW ¼, Sec. 27,  
T26S, R1W, 6th P.M.  
Fnd. Limestone 1.5' deep  
with divot in center



SW cor., SW ¼, Sec. 27,  
T26S, R1W, 6th P.M.  
Fnd. Mag nail in asphalt  
roadway

SE cor., SW ¼, Sec. 27,  
T26S, R1W, 6th P.M.  
Fnd. ½" Rebar

### LEGEND

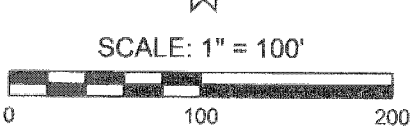
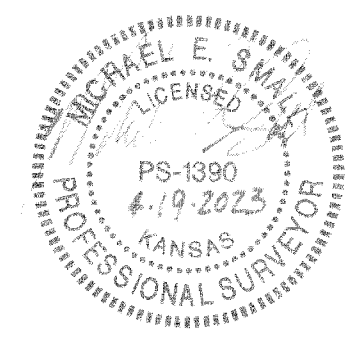
- Date of Survey: 9/2022
- △ = Section Corner Monument Found
  - = Found ½" rebar w/ MKEC CLS 39 id. cap Monument (or see annotation for type)
  - = Set ½" rebar w/ MKEC CLS 39 id. cap
  - ⊕ = Benchmark
  - (M) = Measured
  - (D) = Described
  - (P) = Platted
  - (CM) = Calculated from Measured
  - (CD) = Calculated from Described
  - (CP) = Calculated from Plat
  - 1 = Lot
  - ① = Block

### BENCHMARKS

- BM#1 Square cut top of curb on south side of Village Circle, approximately 35' north and east of south stormwater inlet. Elev. = 1339.38 NAVD88
- BM#2 Square cut top of curb on west side of median island and 10 foot north of the south end of said median lying south of K-96 and Ridge Rd. (being 338 feet S. of the NW corner SW ¼, Sec. 27, T26S, R1W, 6th P.M.) Elev. = 1335.80 NAVD88

### NOTES:

- 1.) This plat of "Estancia Commercial Second Addition" is subject to the conditions of the Community Unit Plan DP-337. The platted building setbacks are established with the CUP or as shown hereon.
- 2.) A portion of a private Electric Easement recorded on Doc.#/Fim-Pg: 29600570, affecting portions of Lots 7, 9 and 11, Block 1 is intentionally not depicted hereon.



Basis of Bearings: Kansas coordinate system of 1983 south zone bearing of N01°35'09"W on the west line of the Southwest Quarter, Section 27, Township 26 South, Range 1 West of the Sixth Principal Meridian, Sedgwick County, Kansas.  
This plat is surveyed and platted on NAD83 using Kansas state plane south zone coordinates, modified to the surface, having a combined adjustment scale factor of 1.000120014401728

Sedgwick County  
Register of Deeds - Tonye Bushong  
Doc.#/Fim-Pg: 30240130  
Receipt #: 2368945  
Pages Recorded: 2  
Recording Fee: \$84.00

Clerk: J. Healy  
Date Recorded: 05/22/2023 03:46:34 PM

