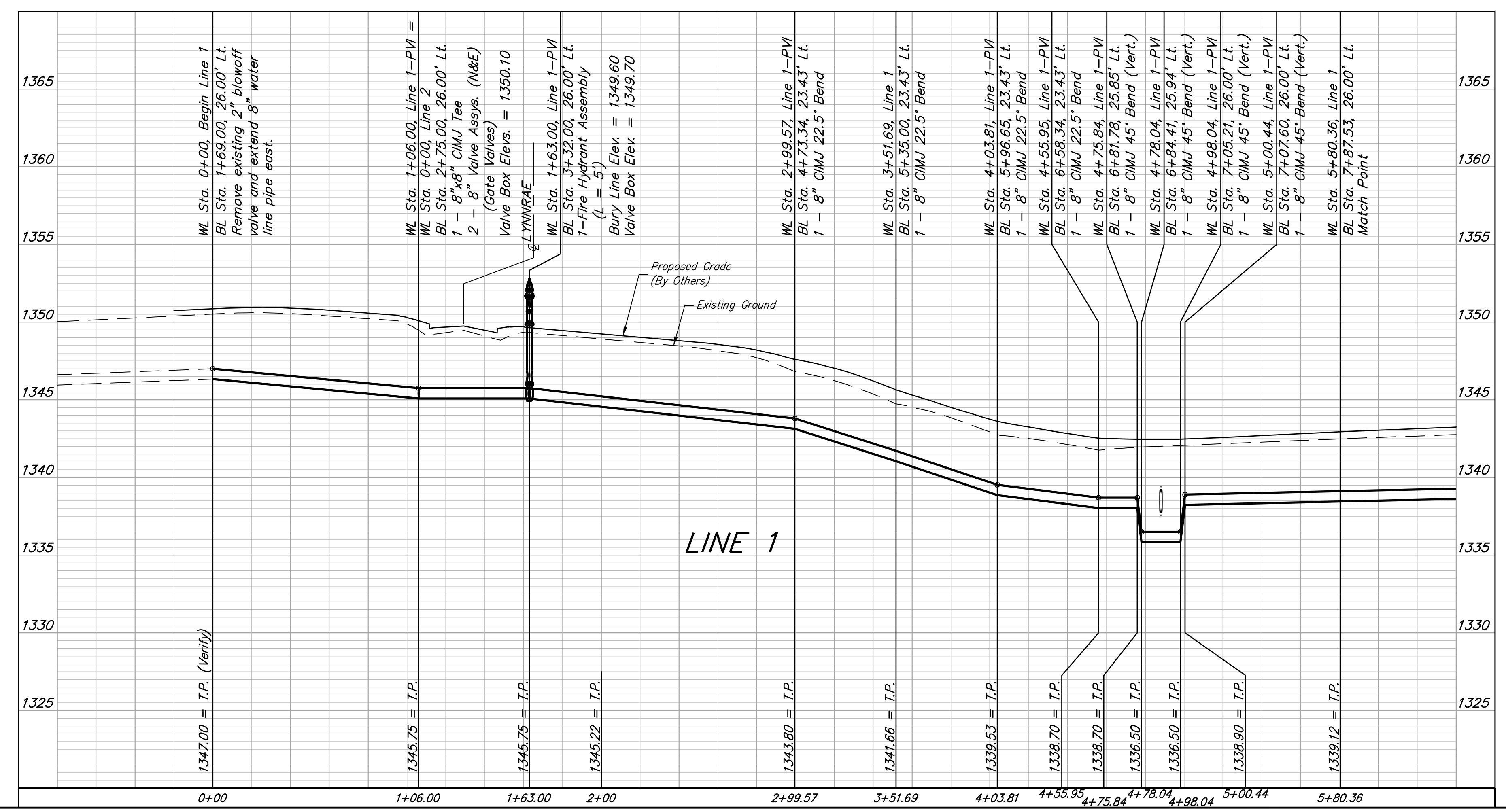
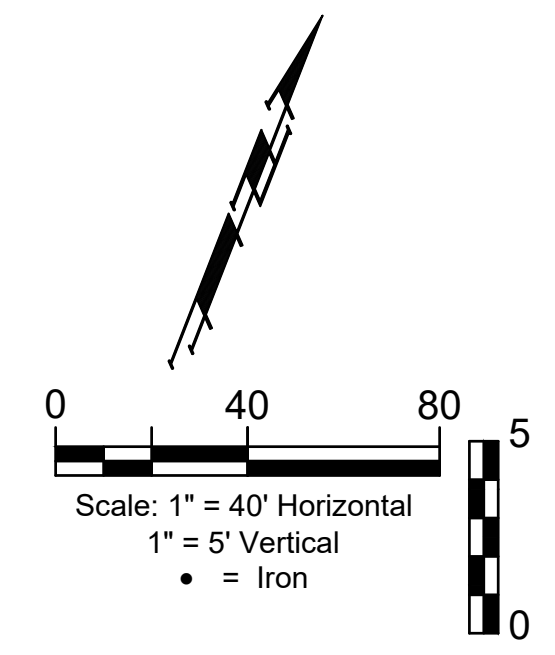
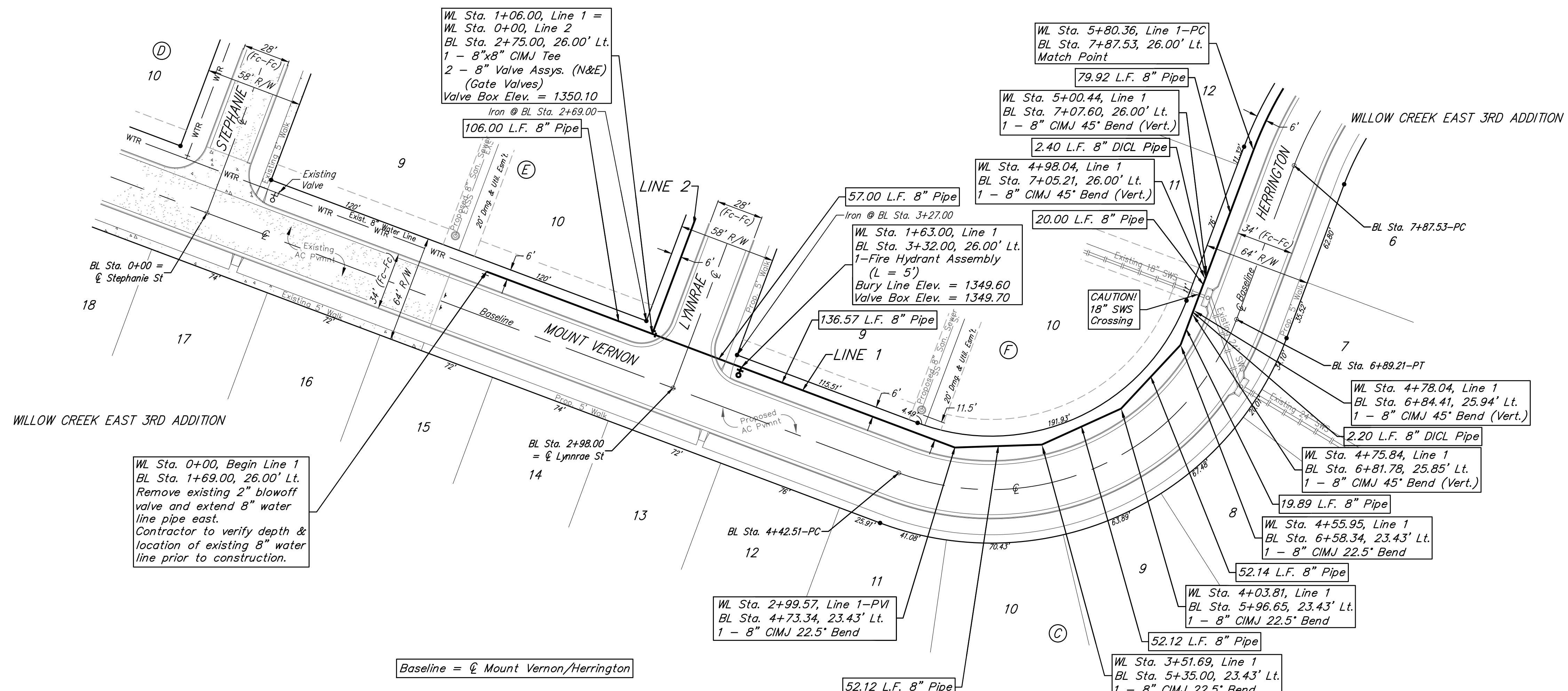


**BENCHMARKS:**  
 Brass benchmark disc in top of curb, east of wheelchair ramp NE cor. of Funston and Lynnrae Elev. = 1343.69 NAVD88

Brass benchmark disc in top of curb, north of wheelchair ramp NW cor. of Funston and Lynnrae Elev. = 1344.71 NAVD88



**BAUGHMAN COMPANY**  
 315 Ellis St.  
 Wichita, KS 67211  
 316-262-7271  
 BaughmanCo.com

---

WILLOW CREEK EAST 3RD ADDITION - PHASE III

## LINE 1

WATER DISTRIBUTION SYSTEM

PROJECT NUMBER: 448-90950  
 DESIGN: DMV DRAWN: JAK  
 DATE: July 17, 2023

SHEET OF  
**4 14**

File: E:\Projects\Willow Creek East 3rd Addition\_17-04-P283\Engineering\Phase 3\WTR\_22-01-E097\WTR\_22-01-E097.dwg