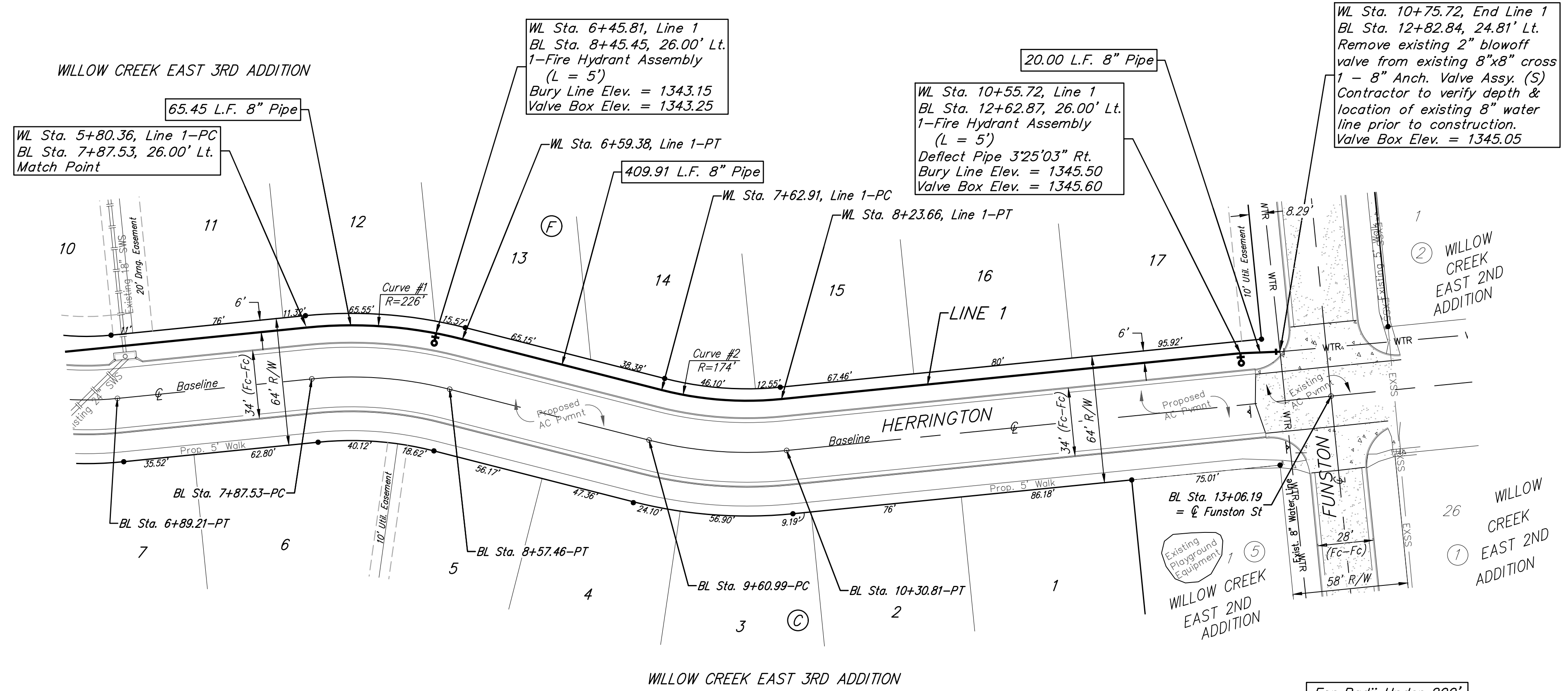
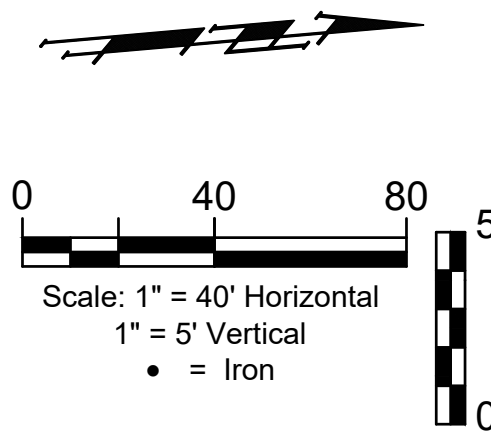


BENCHMARKS:
 Brass benchmark disc in top of curb, east of wheelchair ramp NE cor. of Funston and Lynnrae Elev. = 1343.69 NAVD88

Brass benchmark disc in top of curb, north of wheelchair ramp NW cor. of Funston and Herrington Elev. = 1344.71 NAVD88



Curve #1
 Curve Data Based on Centerline of Pipe
 Rad. = 226' Delta = 20°02'01" Tangent = 39.92'
 Arc = 79.02' L.C. = 78.62' Def./Ft. = 7.60577 Min.

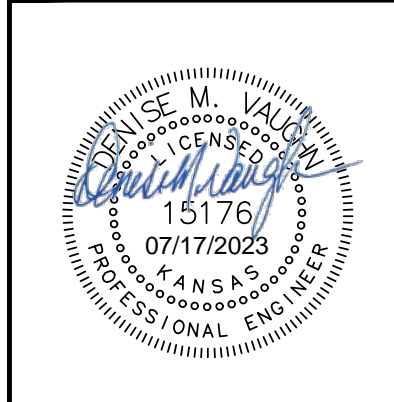
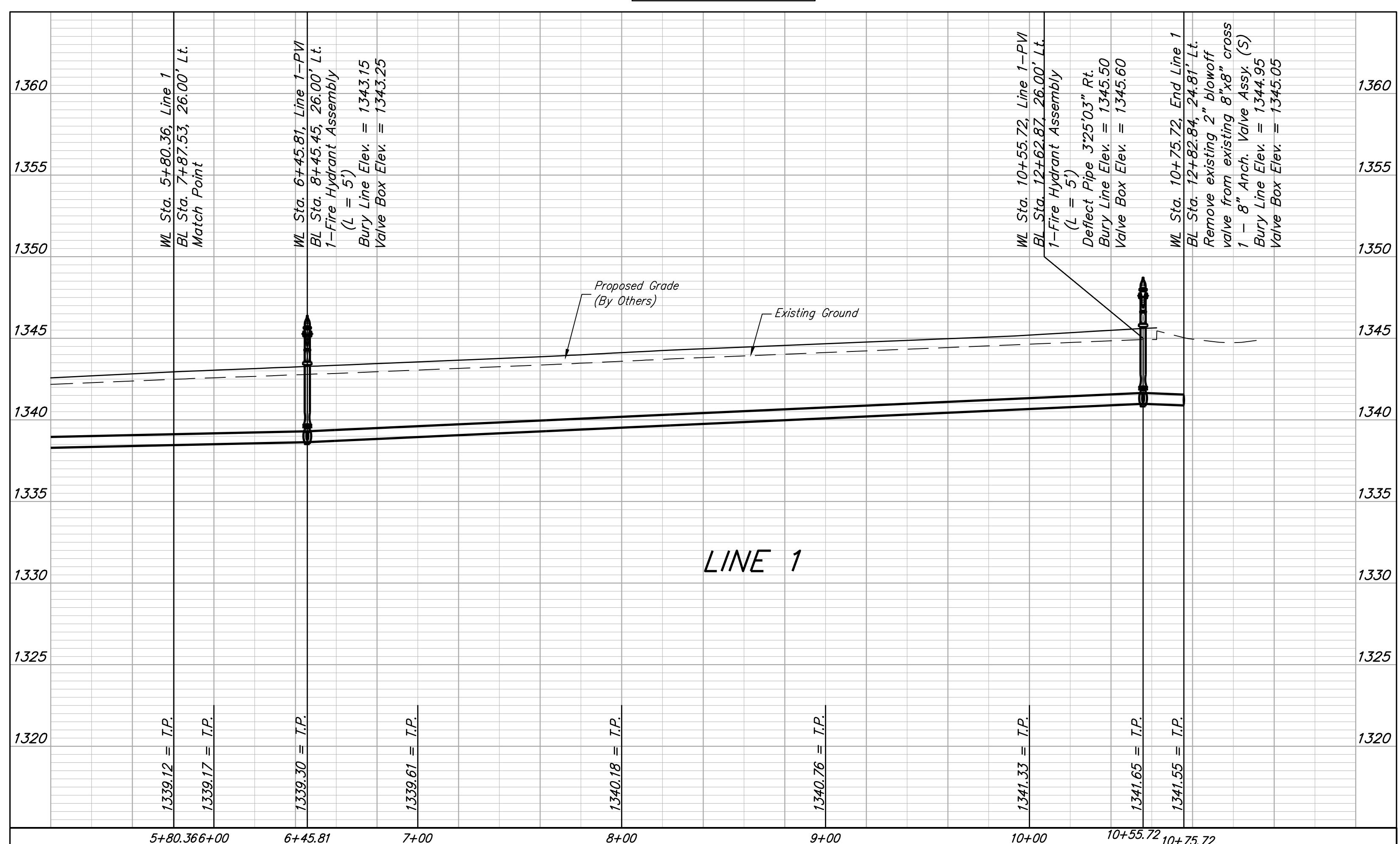
Station	Arc	8' Left	Def.	Total Def.
5+80.36	-	-	0'00'00"	0'00'00"
6+00.00	19.64'	20.33'	2'29'23"	2'29'23"
6+25.00	25.00'	25.87'	3'10'08"	5'39'31"
6+45.81	20.81'	21.54'	2'38'17"	8'17'48"
6+50.00	4.19'	4.34'	0'31'52"	8'49'40"
6+59.38	9.38'	9.71'	1'11'21"	10'01'01"

Curve #2
 Curve Data Based on Centerline of Pipe
 Rad. = 174' Delta = 20°00'10" Tangent = 30.69'
 Arc = 60.75' L.C. = 60.44' Def./Ft. = 9.87791 Min.

Station	Arc	8' Left	Def.	Total Def.
7+62.91	-	-	0'00'00"	0'00'00"
7+75.00	12.09'	11.53'	1'59'25"	1'59'25"
8+00.00	25.00'	23.83'	4'06'57"	6'06'22"
8+23.66	23.66'	22.55'	3'53'43"	10'00'05"

Baseline = ϕ Herrington

For Radii Under 200'
 Contractor to Use
 Short Pipe Lengths



BAUGHMAN COMPANY
 315 Ellis St.
 Wichita, KS 67211
 316-262-7271
 BaughmanCo.com

WILLOW CREEK EAST 3RD ADDITION - PHASE III

LINE 1

WATER DISTRIBUTION SYSTEM

PROJECT NUMBER:
 448-90950

DESIGN: DMV DRAWN: JAK
 DATE: July 17, 2023

SHEET **5** OF **14**

File: E:\Projects\Willow Creek East 3rd Addition_17-04-P283\Engineering\Phase 3\WTR_22-01-E097\WTR_22-01-E097.dwg