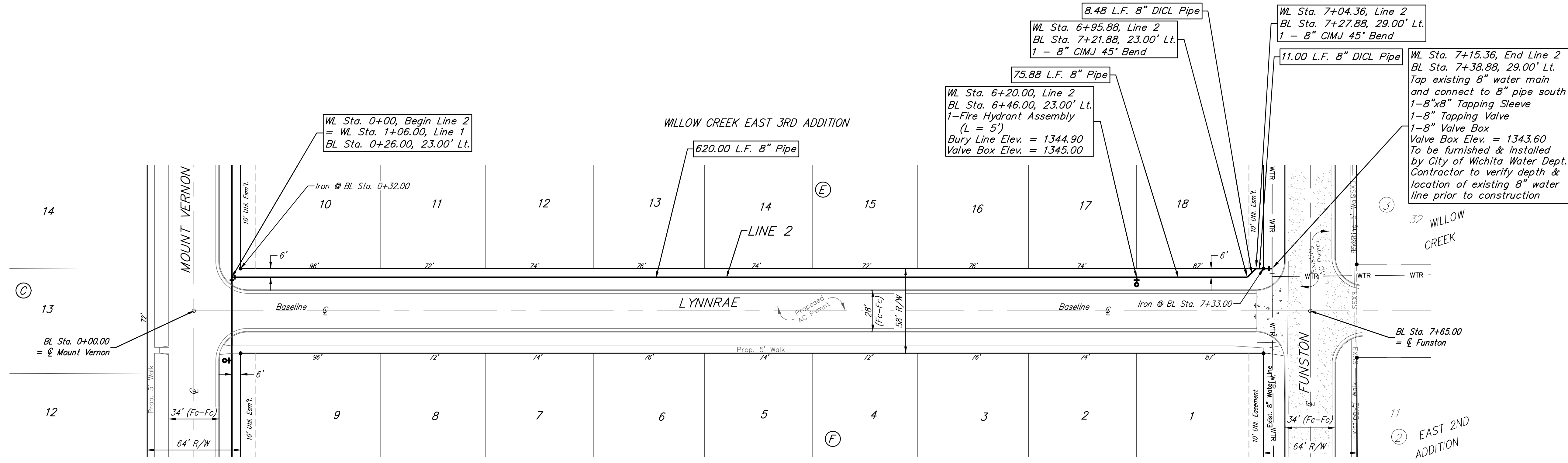
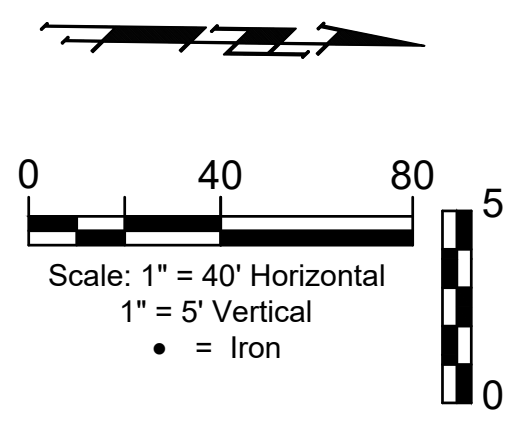


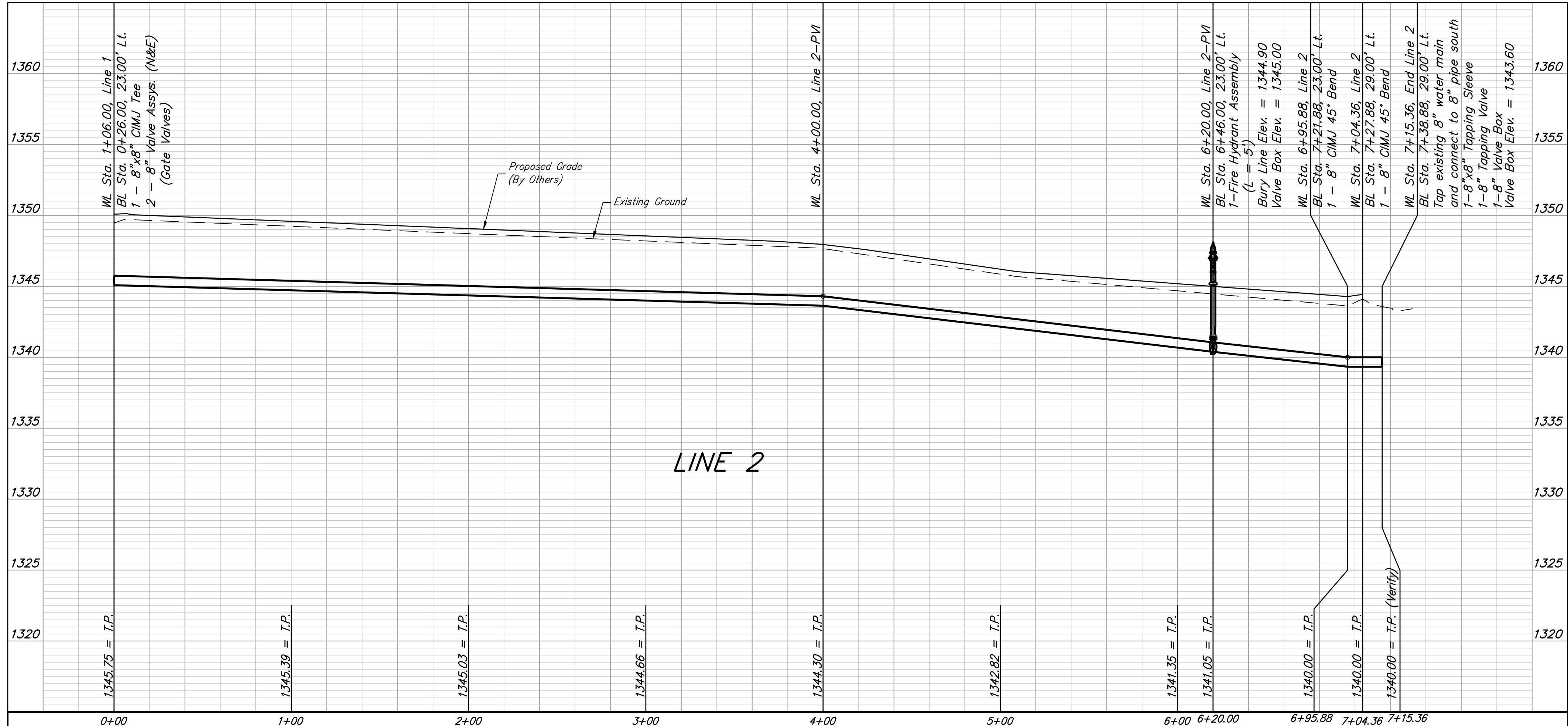
BENCHMARKS:
 Brass benchmark disc in top of curb, east of wheelchair ramp
 NE cor. of Funston and Lynnrae
 Elev. = 1343.69 NAVD88

Brass benchmark disc in top of curb, north of wheelchair ramp
 NW cor. of Funston and Herrington
 Elev. = 1344.71 NAVD88



WILLOW CREEK EAST 3RD ADDITION

Baseline = ϕ Lynnrae



BAUGHMAN COMPANY
 315 Ellis St.
 Wichita, KS 67211
 316-262-7271
 BaughmanCo.com

WILLOW CREEK EAST 3RD ADDITION - PHASE III

LINE 2

WATER DISTRIBUTION SYSTEM

PROJECT NUMBER:
448-90950

DESIGN: DMV DRAWN: JAK
 DATE: July 17, 2023

SHEET **6** OF **14**

File: E:\Projects\Willow Creek East 3rd Addition_17-04-P283\Engineering\Phase 3\WTR_22-01-E097.dwg