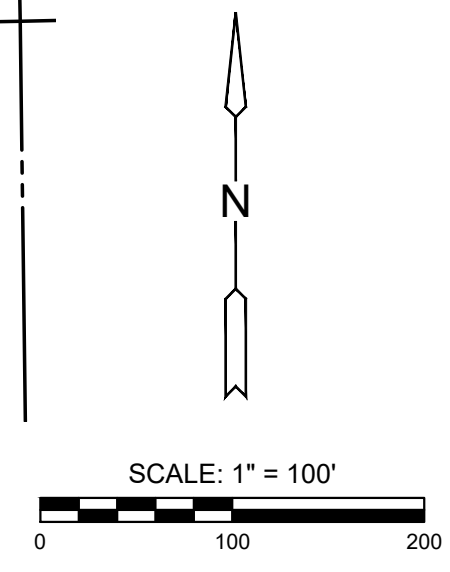
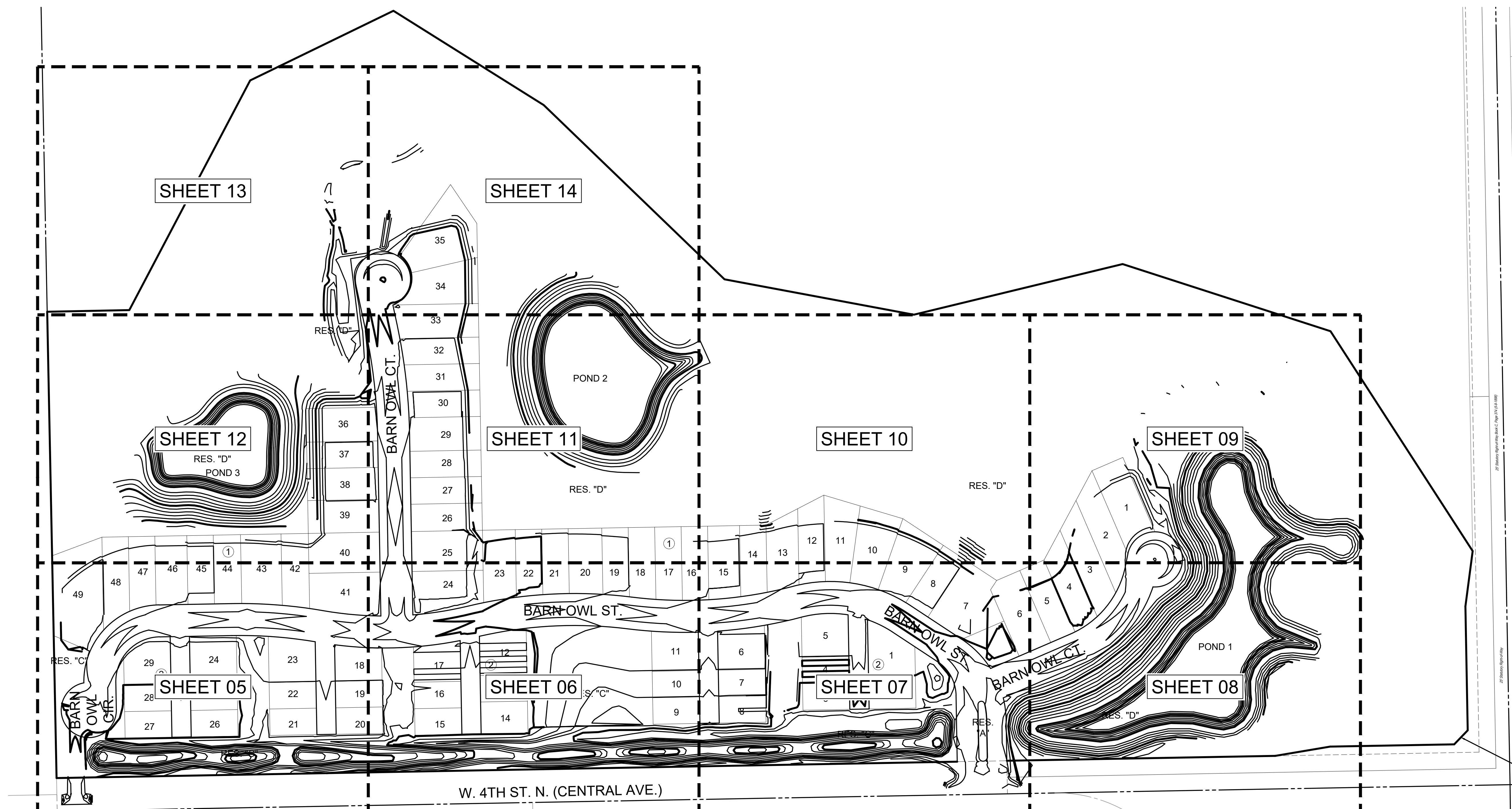


J:\PROJECTS\2022\2201010296_PERFECTION_JACOBS\135TH AND CENTRAL\00_220296_CAD\SHOTS\05_CIVIL\GRID2296-05-1200.DWG
 PLOTTED: Tuesday, July 25, 2023 @ 08:10AM



STORMWATER DRAIN #507 IMPROVEMENTS TO SERVE
COURTYARDS AT JACOBS FARM
 WICHITA, KS

©2023
 MKEC Engineering
 All Rights Reserved
 www.mkec.com
 These drawings and their contents, including, but not limited to, all concepts, designs, & ideas are the exclusive property of MKEC Engineering (MKEC), and may not be used or reproduced in any way without the express consent of MKEC.

OVERALL GRADING PLAN

PROJECT NO.	472-2023-085532
DATE	JULY 2023
SCALE	1" = 100'
DESIGNED	DML
DRAWN	DML
CHECKED	SPE

NO.	REVISION	DATE