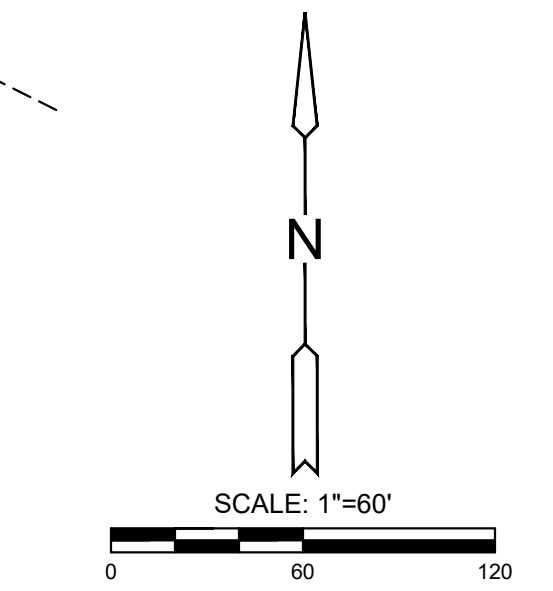
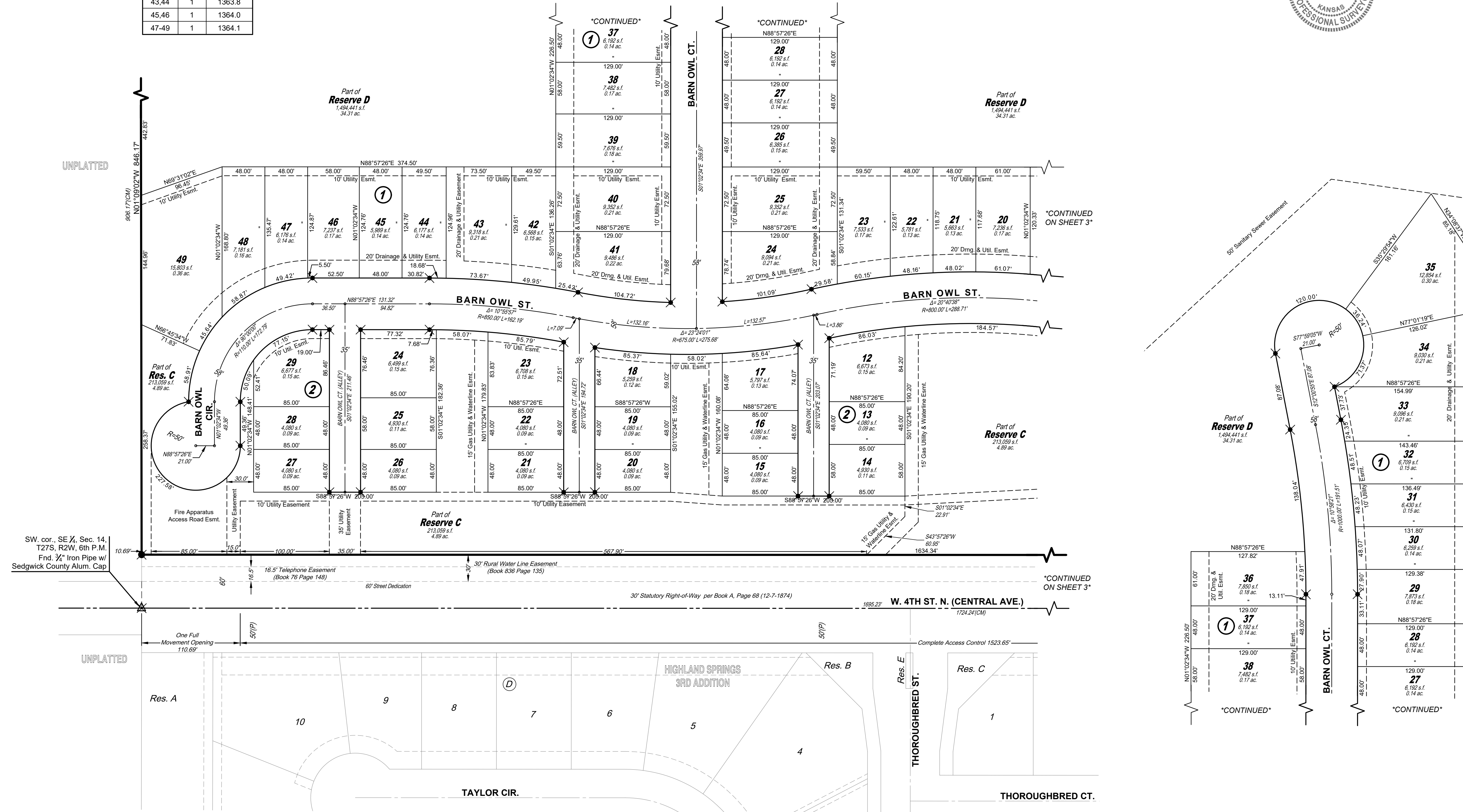
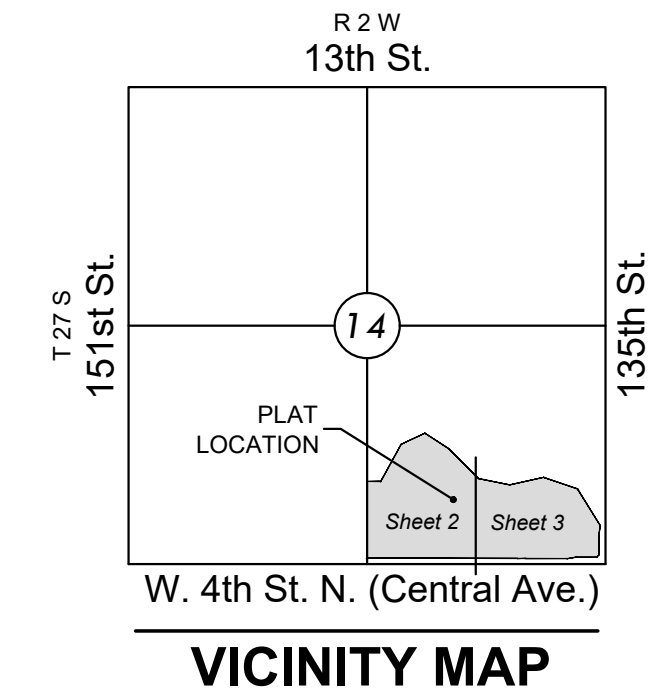
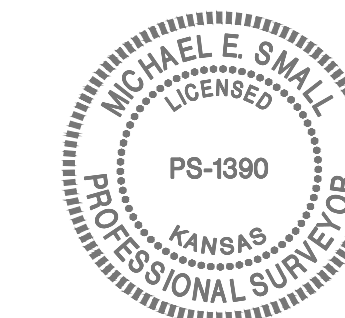


# FINAL PLAT

## COURTYARDS AT JACOBS FARM ADDITION

### AN ADDITION TO WICHITA, SEDGWICK COUNTY, KANSAS

MINIMUM PAD ELEVATIONS LOWEST OPENINGS			
LOT(S)	BLOCK	ELEVATION	NAVD 89
20,21	1	1358.9	
22-30	1	1359.0	
31-35	1	1361.8	
36-42	1	1363.6	
43,44	1	1363.8	
45,46	1	1364.0	
47-49	1	1364.1	



Basis of Bearings: Kansas coordinate system of 1983 south zone bearing of S88°57'26"W on the south line of Southeast Quarter, Section 14, Township 27 South, Range 2 West of the Sixth Principal Meridian, Sedgwick County, Kansas. This plat is surveyed and platted on NAD83 using Kansas state plane south zone coordinates, modified to the surface, having a combined adjustment scale factor of 1.000120014401728

#### LEGEND

- Date of Survey: June 2022
- ▲ = Section Corner Monument Found
  - = Set 3/4" rebar w/ MKEC CLS 39 id. cap
  - = Benchmark
  - (M) = Measured
  - (D) = Described
  - (CM) = Calculated from Measurement
  - (CD) = Calculated from Described
  - Drng. = Drainage
  - Util. = Utility
  - Esmnt. = Easement
  - 1 = Lot
  - ① = Block

#### BENCHMARKS

- BM#1 Nail in top of curb, south side of Lost Creek Road near northwest corner of inlet, 56 feet west and 145 feet north of Northeast Corner of SE 1/4, Sec. 14, T27S, R2W Elev.=1351.54 NAVD88 (offsite)
- BM#2 Nail in northeast corner of traffic signal, northwest corner of Central and 135th Street, 77 feet west and 36 feet north of Southeast Corner of SE 1/4, Sec. 14, T27S, R2W Elev.=1349.14 NAVD88 (offsite)