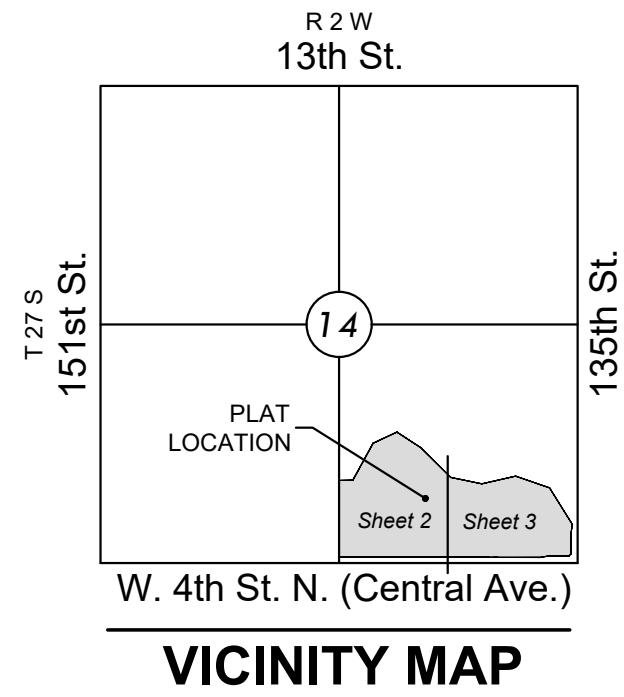


FINAL PLAT

COURTYARDS AT JACOBS FARM ADDITION

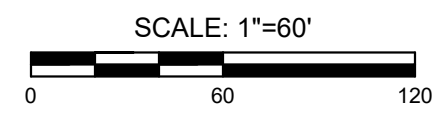
AN ADDITION TO WICHITA, SEDGWICK COUNTY, KANSAS



Part of Reserve D
1,494,441 s.f.
34.31 ac.

LEGEND

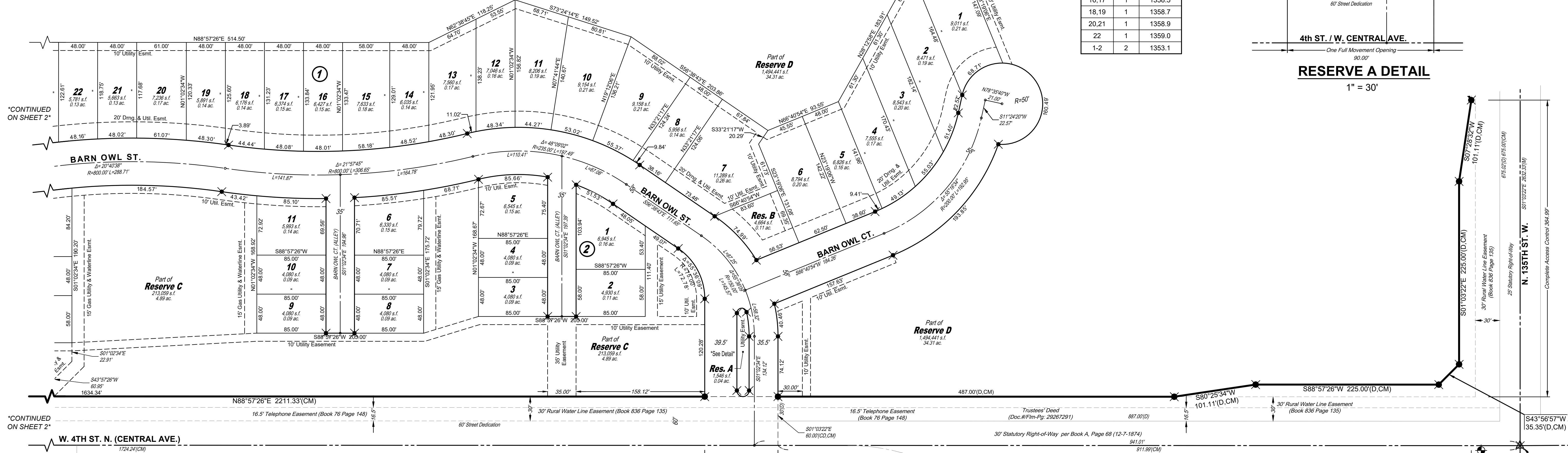
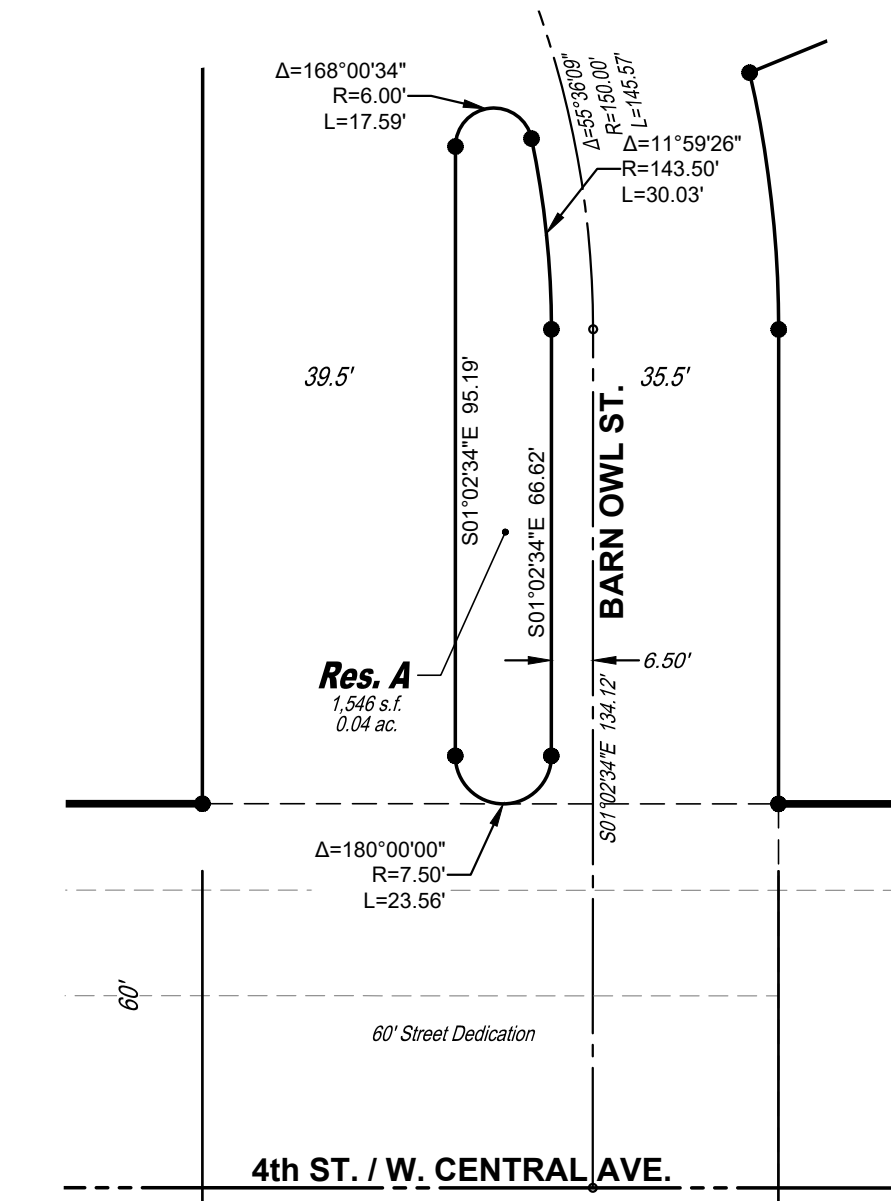
- Date of Survey: June 2022
- △ = Section Corner Monument Found
 - = Set 5/8" rebar w/ MKEC CLS 39 id. cap
 - ⊕ = Benchmark
 - (M) = Measured
 - (D) = Described
 - (CM) = Calculated from Measurement
 - (CD) = Calculated from Described
 - Drng. = Drainage
 - Util. = Utility
 - Esmt. = Easement
 - 1 = Lot
 - ① = Block



Basis of Bearings: Kansas coordinate system of 1983 south zone bearing of S88°57'26"W on the south line of Southeast Quarter, Section 14, Township 27 South, Range 2 West of the Sixth Principal Meridian, Sedgwick County, Kansas.

This plat is surveyed and platted on NAD83 using Kansas state plane south zone coordinates, modified to the surface, having a combined adjustment scale factor of 1.000120014401728

LOT(S)	BLOCK	ELEVATION
1	1	1355.0
2	1	1355.3
3	1	1355.5
4	1	1355.9
5	1	1356.1
6	1	1356.4
7	1	1356.9
8	1	1357.1
9	1	1357.3
10	1	1357.6
11	1	1357.7
12,13	1	1358.0
14,15	1	1358.3
16,17	1	1358.5
18,19	1	1358.7
20,21	1	1358.9
22	1	1359.0
1-2	2	1353.1



CONTINUED ON SHEET 2

CONTINUED ON SHEET 2

BENCHMARKS

- BM#1 Nail in top of curb, south side of Lost Creek Road near northwest corner of inlet, 56 feet west and 145 feet north of Northeast Corner of SE 1/4, Sec. 14, T27S, R2W Elev.=1351.54 NAVD88 (offsite)
- BM#2 Nail in northeast corner of traffic signal, northwest corner of Central and 135th Street, 77 feet west and 36 feet north of Southeast Corner of SE 1/4, Sec. 14, T27S, R2W Elev.=1349.14 NAVD88

SE. cor., SE 1/4, Sec. 14, T27S, R2W, 6th P.M. Fnd. 1/2" Iron Pipe in Thimble