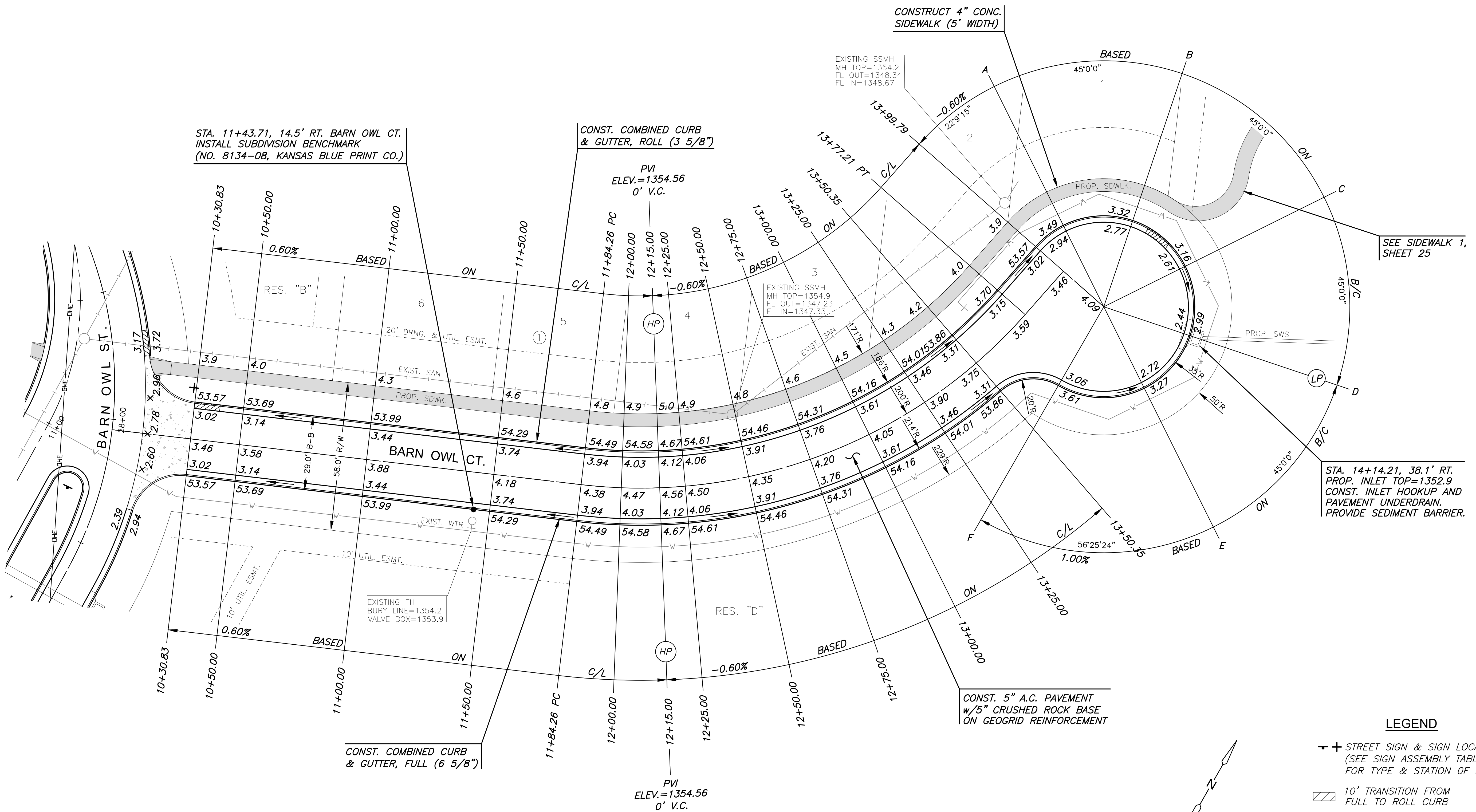


J:\PROJECTS\2022\2201010296\_PERFECTION\_JACOBS\135TH AND CENTRAL\00\_220296\_CAD\SHOTS\05\_CIVIL\PAV\220296-05-5018.DWG  
 PLOTTED: Tuesday, July 25, 2023 10:25AM

SUBDIVISION BENCH MARKS			
NO.	STREET AND STATION	FROM CL	DESCRIPTION
1	BARN OWL CT., STA. 11+43.71	14.5' RT	TOP OF CURB AT FIRE HYDRANT

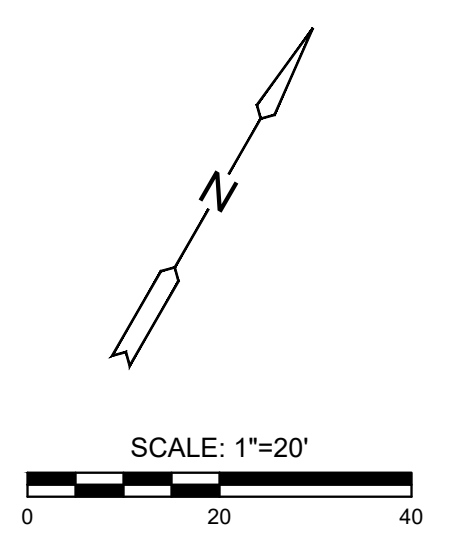
NOTE: CONTRACTOR SHALL INSTALL SUBDIVISION BENCH MARKS ("FLAT SURVEY MARKERS NO. 8134-08 3" TOP DIAMETER" PROVIDED BY KANSAS BLUE PRINT CO., INC.) COSTS TO BE CONSIDERED SUBSIDIARY TO CONSTRUCTION OF COMBINED CURB AND GUTTER.



STA. 14+14.21, 38.1' RT.  
 PROP. INLET TOP=1352.9  
 CONST. INLET HOOKUP AND  
 PAVEMENT UNDERDRAIN.  
 PROVIDE SEDIMENT BARRIER.

SEE SIDEWALK 1,  
 SHEET 25

NOTE:  
 1. TOP OF CURB ELEVATIONS SHOWN  
 ARE FOR FULL CURB. CONSTRUCT  
 CURB AND GUTTER AS NOTED.  
 2. SCH. 40 PVC SLEEVES TO BE  
 BURIED AT A DEPTH OF 2' TO TOP  
 OF SLEEVE, MINIMUM



PAVING & INCIDENTAL DRAINAGE PLANS TO SERVE  
**COURTYARDS AT JACOBS FARM**  
 WICHITA, KS

©2023  
 MKEC Engineering  
 All Rights Reserved  
 www.mkec.com  
 These drawings and their contents,  
 including, but not limited to, all concepts,  
 designs, & ideas are the exclusive  
 property of MKEC Engineering (MKEC),  
 and may not be used or reproduced in any  
 way without the express consent of MKEC.

**BARN OWL CT.  
 (EAST)**

PROJECT NO.	472-2023-085880	
DATE	JULY 2023	
SCALE	1" = 20'	
DESIGNED	DRAWN	CHECKED
DFL	LAL	SPE

NO.	REVISION	DATE