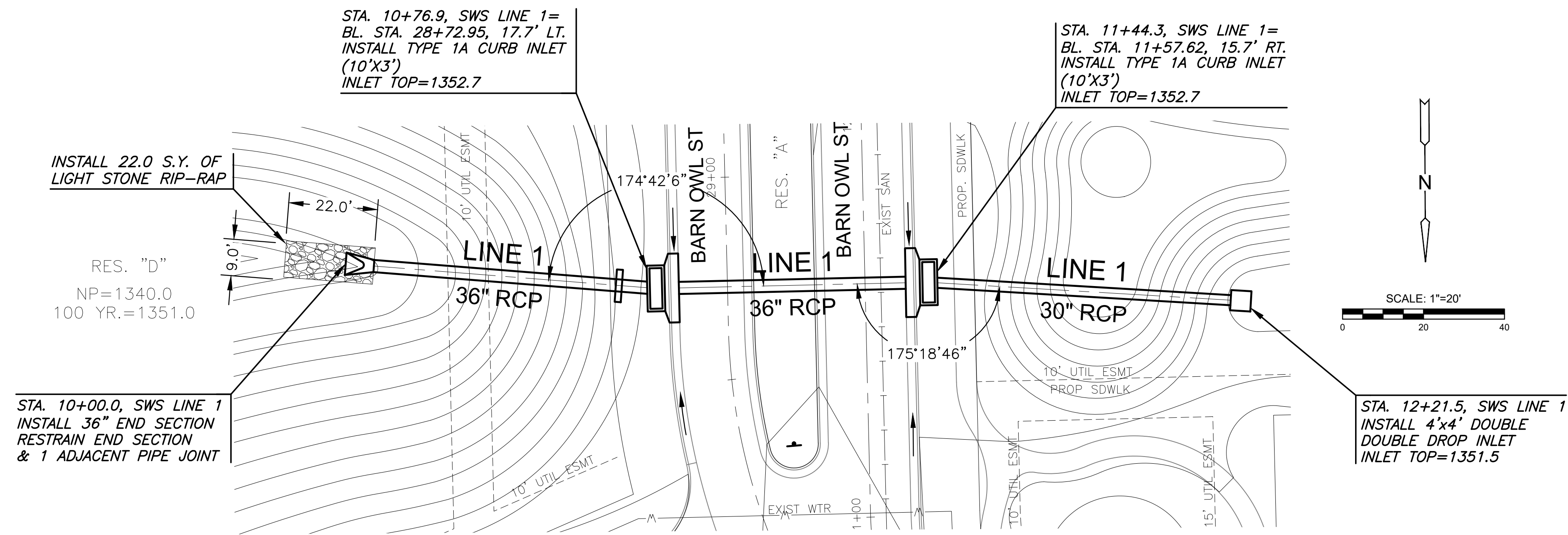


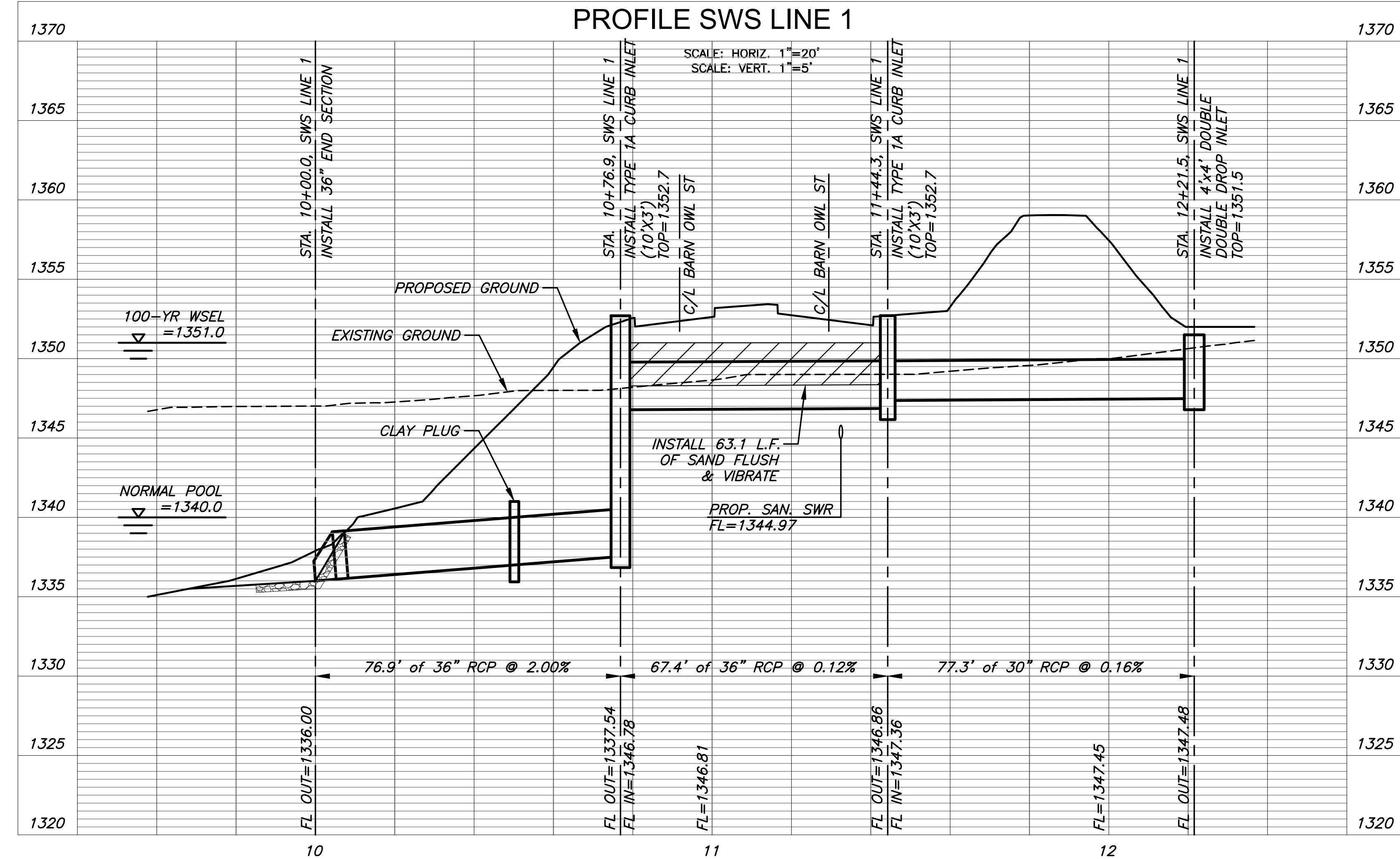
PLOTTED: Tuesday, July 25, 2023 @ 10:34AM

J:\PROJECTS\2022\2201010296_PERFECTION_JACOBS\135TH AND CENTRAL\00_220296_CAD\SHOTS\05_CIVIL\SWS\2296-05-4200.DWG



NOTE:
CONTRACTOR TO VERIFY THE DEPTH AND LOCATION OF EXISTING UTILITIES PRIOR TO CONSTRUCTION.

**PLAN SWS LINE 1
PROFILE SWS LINE 1**



PAVING & INCIDENTAL DRAINAGE PLANS TO SERVE
COURTYARDS AT JACOBS FARM
 WICHITA, KS

©2023 MKEC Engineering All Rights Reserved
 These drawings and their contents, including, but not limited to, all concepts, designs, & ideas are the exclusive property of MKEC Engineering (MKEC), and may not be used or reproduced in any way without the express consent of MKEC.

LINE 1	
PROJECT NO.	472-2023-085880
DATE	JULY 2023
SCALE	1" = 20'
DESIGNED	DRAWN
DFL	LAL
CHECKED	SPE
NO.	REVISION
DATE	
SHEET NO.	
32 OF 65	