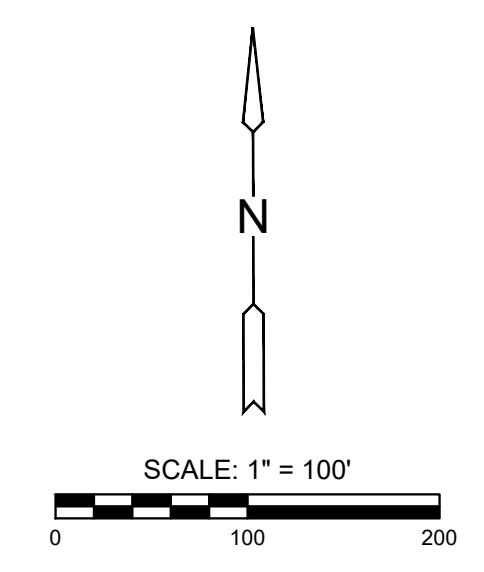
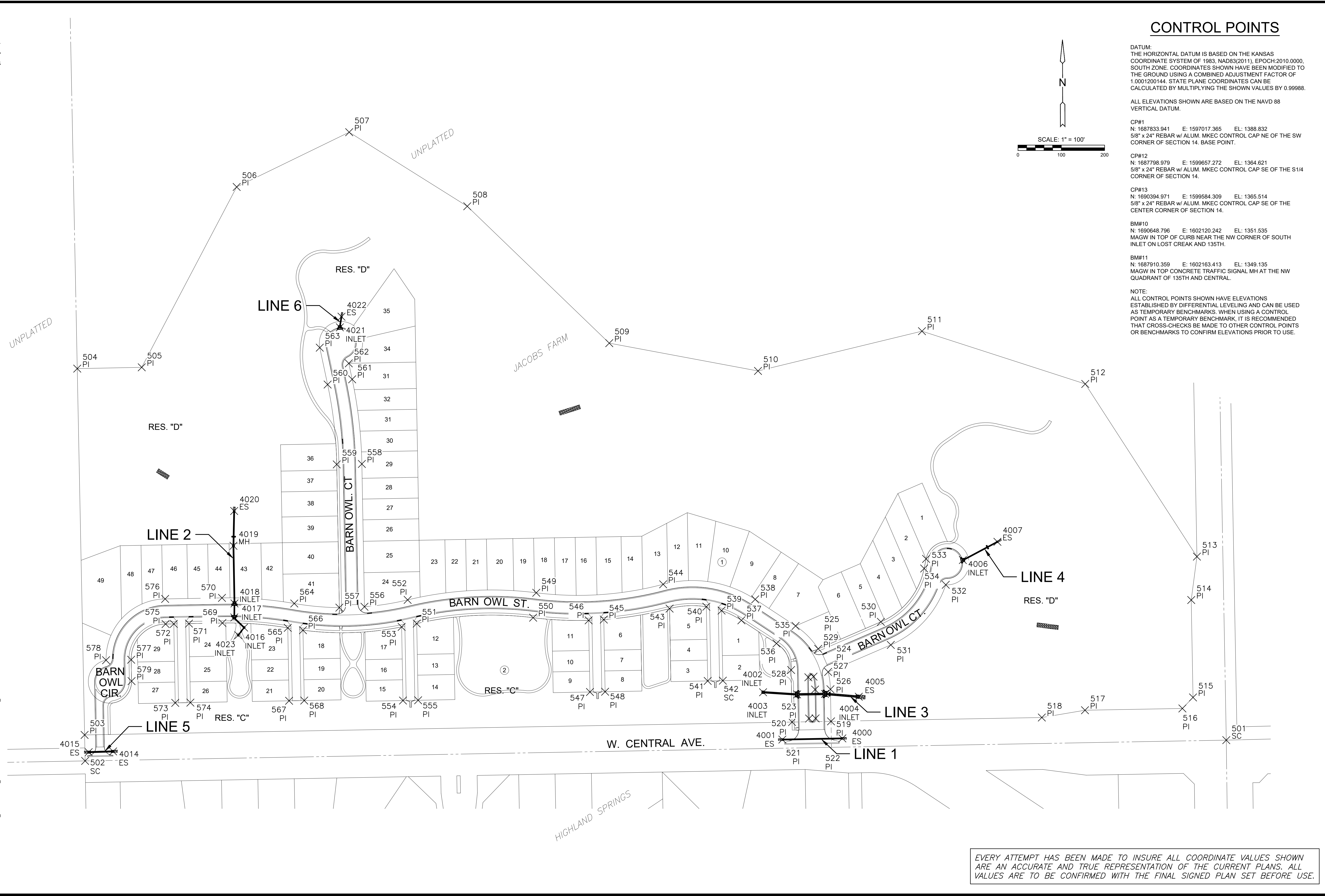


J:\PROJECTS\2022\2201010296_PERFECTION_JACOBS_135TH_AND_CENTRAL\00_220296_CAD\SHOTS\05_CIVIL\PAV\220296-05-5000.DWG
 PLOTTED: Tuesday, July 25, 2023 @ 10:38AM



CONTROL POINTS

DATUM:
 THE HORIZONTAL DATUM IS BASED ON THE KANSAS COORDINATE SYSTEM OF 1983, NAD83(2011), EPOCH:2010.0000, SOUTH ZONE. COORDINATES SHOWN HAVE BEEN MODIFIED TO THE GROUND USING A COMBINED ADJUSTMENT FACTOR OF 1.0001200144. STATE PLANE COORDINATES CAN BE CALCULATED BY MULTIPLYING THE SHOWN VALUES BY 0.99988.

ALL ELEVATIONS SHOWN ARE BASED ON THE NAVD 88 VERTICAL DATUM.

CP#1
 N: 1687833.941 E: 1597017.365 EL: 1388.832
 5/8" x 24" REBAR w/ ALUM. MKEC CONTROL CAP NE OF THE SW CORNER OF SECTION 14. BASE POINT.

CP#12
 N: 1687798.979 E: 1599657.272 EL: 1364.621
 5/8" x 24" REBAR w/ ALUM. MKEC CONTROL CAP SE OF THE S1/4 CORNER OF SECTION 14.

CP#13
 N: 1690394.971 E: 1599584.309 EL: 1365.514
 5/8" x 24" REBAR w/ ALUM. MKEC CONTROL CAP SE OF THE CENTER CORNER OF SECTION 14.

BM#10
 N: 1690648.796 E: 1602120.242 EL: 1351.535
 MAGW IN TOP OF CURB NEAR THE NW CORNER OF SOUTH INLET ON LOST CREAK AND 135TH.

BM#11
 N: 1687910.359 E: 1602163.413 EL: 1349.135
 MAGW IN TOP CONCRETE TRAFFIC SIGNAL MH AT THE NW QUADRANT OF 135TH AND CENTRAL.

NOTE:
 ALL CONTROL POINTS SHOWN HAVE ELEVATIONS ESTABLISHED BY DIFFERENTIAL LEVELING AND CAN BE USED AS TEMPORARY BENCHMARKS. WHEN USING A CONTROL POINT AS A TEMPORARY BENCHMARK, IT IS RECOMMENDED THAT CROSS-CHECKS BE MADE TO OTHER CONTROL POINTS OR BENCHMARKS TO CONFIRM ELEVATIONS PRIOR TO USE.



PAVING & INCIDENTAL DRAINAGE PLANS TO SERVE
COURTYARDS AT JACOBS FARM
 WICHITA, KS

©2023
 MKEC Engineering
 All Rights Reserved
 www.mkec.com
 These drawings and their contents, including, but not limited to, all concepts, designs, & ideas are the exclusive property of MKEC Engineering (MKEC), and may not be used or reproduced in any way without the express consent of MKEC.

BUBBLE MAP

PROJECT NO.	472-2023-085880	
DATE	JULY 2023	
SCALE	1" = 100'	
DESIGNED	DRAWN	CHECKED
DFL	LAL	SPE

NO.	REVISION	DATE

SHEET NO.
 37 OF 65

EVERY ATTEMPT HAS BEEN MADE TO INSURE ALL COORDINATE VALUES SHOWN ARE AN ACCURATE AND TRUE REPRESENTATION OF THE CURRENT PLANS. ALL VALUES ARE TO BE CONFIRMED WITH THE FINAL SIGNED PLAN SET BEFORE USE.