

CONTRACTOR TO REMOVE TREES AS NECESSARY FOR CONSTRUCTION. SUBSIDIARY TO BID ITEM FOR "SITE CLEARING AND RESTORATION"

STA 3+99.70 LINE 1 = STA 0+00.00 LINE 1A CONSTRUCT SHALLOW TYPE P MH W/ BEEHIVE FRAME AND GRATE TOP ELEV. = 1388.60 5.0' DIAMETER

STA 5+10.9 TO 5+48.6 PLACE 36.7 L.F. FLOWABLE FILL

STA 5+50.04 LINE 1 SCRAGG STA 5+61.38, 19.17' LT. F.L.F. CONSTRUCT STANDARD TYPE 1A 5'x3' CURB INLET TOP ELEV. = 1391.96

STA 5+09.36 LINE 1 BLADE STA 5+61.38, 19.17' RT. F.L.F. CONSTRUCT STANDARD TYPE 1A 5'x3' CURB INLET TOP ELEV. = 1391.96

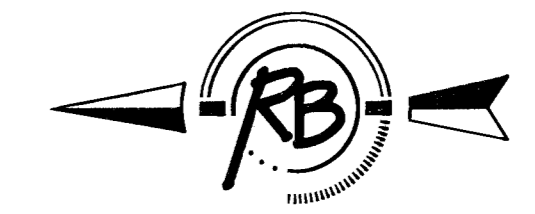
STA 6+16.90 LINE 1 CONSTRUCT SPECIAL SHALLOW TYPE P MH W/ BEEHIVE FRAME AND GRATE TOP ELEV. = 1389.50

STA 8+26.63 LINE 1 CONSTRUCT SHALLOW TYPE P MH TOP ELEV. = 1391.50

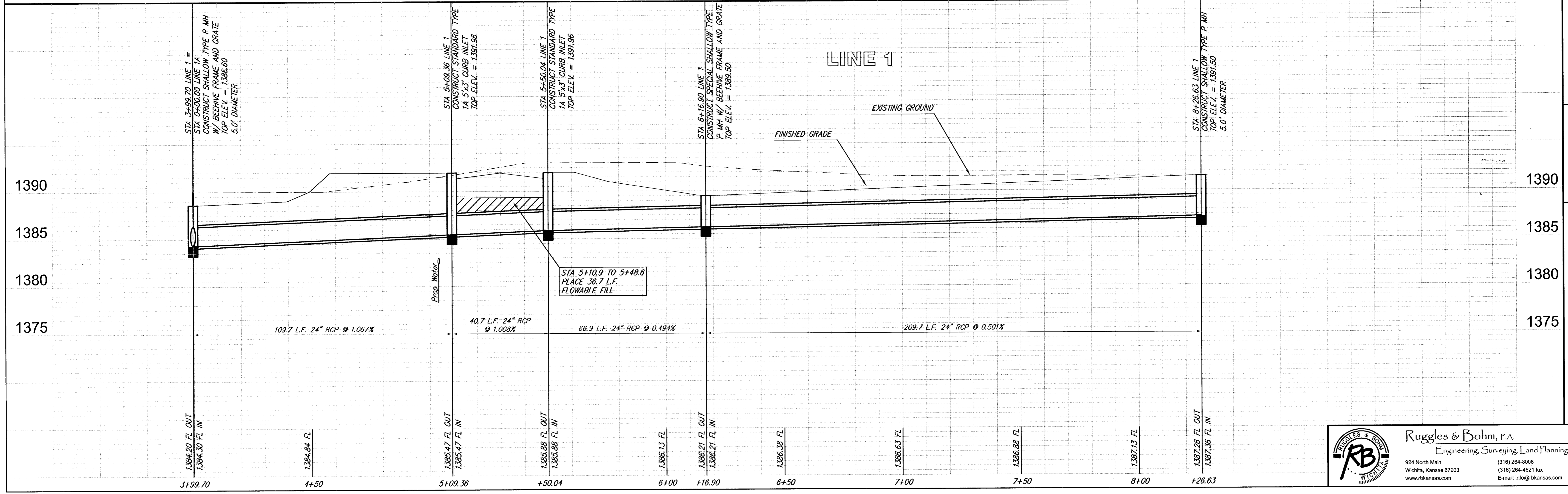
CONTRACTOR TO REMOVE FENCE AS NECESSARY FOR CONSTRUCTION. SUBSIDIARY TO BID ITEM FOR "SITE CLEARING AND RESTORATION"

CONTRACTOR TO REMOVE TREES AS NECESSARY FOR CONSTRUCTION. SUBSIDIARY TO BID ITEM FOR "SITE CLEARING AND RESTORATION"

# Sawmill Creek Addition



SCALE 1" = 20'



DESIGN	AIL	DATE	Jan. 17, 2005
PROJECT NUMBER	472-84123	DRAWING FILE	Storm Sewer [SWS 02]
Sawmill Creek Addition Storm Sewer WICHITA, KANSAS			
REVISION	DATE	REVIEW	

**Ruggles & Bohm, P.A.**  
 Engineering, Surveying, Land Planning  
 924 North Main  
 Wichita, Kansas 67203  
 www.rbkansas.com  
 (316) 264-8008  
 (316) 264-4621 fax  
 E-mail: info@rbkansas.com