

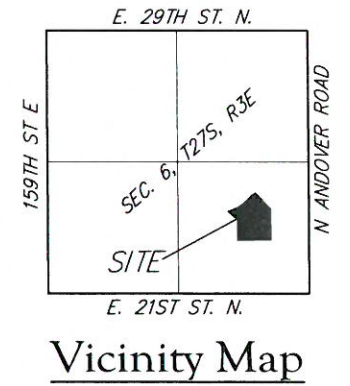
GENERAL NOTES:

- The Contractor shall comply with all applicable safety regulations. All construction shall be completed following current City Standard Specifications and Special Provisions.
- Contractor will be required to provide notice to utility companies a minimum of seventy-two (72) hours prior to any excavation, as follows:
Kansas One-Call 687-2470
The Contractor must notify the following in case of an emergency:
AT&T 1-800-246-8464
Black Hills Energy 1-800-694-8989
City of Wichita Water & Sewer 1-316-219-8921
City of Andover Public Works 1-316-733-1303
Cox Communications 1-888-249-3530
Kansas Gas Service 1-888-482-4950
Evergy 1-800-544-4857
- Utility service lines, poles, etc. are to be adjusted as necessary by others prior to construction unless the plans specifically call for their adjustment by the Contractor or unless the plans specifically identify a utility to be adjusted by its owner during construction. Existing utilities and their location, as shown on the plans, represent the best information obtainable for design. The Contractor will be required to work around existing utilities within the right-of-way which do not conflict with proposed construction.
- Rubble from the removal of miscellaneous structures and excess excavation which is to be wasted shall be disposed of on sites to be provided by the Contractor. These sites shall be approved by the Engineer as to suitability, appearance and site location. Locations, in the opinion of the Engineer, that will leave an unsightly appearance will not be approved. All disposal sites must be approved by the Kansas Department of Health and Environment. Material either stockpiled or disposed of in a flood plain will require a Kansas State Board of Agriculture permit. Any material dumped in waters of the United States or wetlands is subject to U.S. Corps of Engineers permitting regulations. Any material buried or stockpiled beyond approved construction limits will require additional archaeological investigations unless buried in a previously approved borrow location.
- Trees and shrubs in public right-of-way which are in direct conflict with proposed new construction shall be removed by the Contractor with the City's approval. Trees and shrubs which are not in direct conflict with proposed new construction shall be saved and protected from damage.
- The Contractor shall give all property owners and/or tenants of developed property abutting the construction of this project a minimum of ten (10) days notice prior to start of construction.
- The Contractor shall be responsible for preserving property irons. The Contractor will be required to re-establish any property irons which are damaged or destroyed by his construction operations. Such irons shall be re-established by a licensed land surveyor in accordance with state laws.
- The Engineering Division shall field locate water valve one time during construction when requested by the Contractor. It shall be the Contractor's responsibility to preserve such field locations during the construction process. Water valves, valve boxes or fire hydrants damaged during construction shall be repaired by Contractor at his own expense. Valve boxes and water meters within the project limits shall be adjusted to match field grades by the contractor.
- The Contractor shall notify the consultant engineer and Shawn Mellies at 316-268-4632 with the City of Wichita with the anticipated construction start date and notify them of project completion.
- If traffic will be impacted by construction, a traffic control plan must be submitted and approved by the City Traffic Engineer at traffic@wichita.gov before construction can begin. The Contractor shall be responsible for all traffic control measures to facilitate construction. All construction zone markings and signage shall conform to the latest version of Manual on Uniform Traffic Control Devices (MUTCD) as published by the US Dept. of Transportation, Federal Highway Administration. All costs associated with construction markings and signage shall be the Contractors responsibility.
- All elevations shown are NAVD 29.
- All areas disturbed during construction that will not be under proposed pavement shall be restored to match existing conditions.

- City maintenance of water mains ends at right-of-way.
- Opening and closing of water valves shall be done slowly to prevent damage to the water distribution system from water hammer. All valves closed by the contractor must be reopened as new construction permits. The project inspector must ascertain that any valve closed by the Contractor is reopened. The contractor will be permitted to operate water valves only when the project inspector assigned to the project is present.
- The Contractor shall lay a Tracer Wire and Set Test Stations along all water pipe installed in accordance with City Specifications and Tracer Wire Detail on detail sheet WL-101, cost is subsidiary to pipe installation.
- The contractor shall provide materials for temporary blowoff of waterlines. Connections to the existing waterline(s) shall be made with clean, swabbed pipe and flushed upon completion of tie-ins.
- Requests for short term water interruptions shall be made to the City Water Distribution Division and will be subject to their approval. The Contractor shall give written notice to any property owner, business, and/or tenants that will have water service interrupted at least 5 days in advance. Such notifications should indicate the time and date that the water will be turned off and when the service will be restored. No business, property owner, and/or tenants shall be without water service for more than 8 hours. Proposed tie in locations which will affect water service to property owners shall be performed during non-peak hours.
- Deflections at pipe joint or couplings shall not exceed the pipe manufacturers recommended maximum. Where deflections are greater than the maximum allowed, the contractor shall utilize fittings.
- Any existing joint exposed during excavation shall be replaced if within four feet of proposed joint.
- Valves 12 inches and larger are to be operated by the City Water Distribution Division, 48 hours of advance notice is required.
- All wet taps shall be installed by the City of Wichita. The Contractor will reimburse the City for tapping fees prior to tap being made. Unless noted on plans.
- The Contractor shall protect from damage and support existing utilities through construction as approved by the utility owner and the Engineer at the contractor's expense.
- Contractor shall limit the extent of trench openings overnight and weekends to less than 50 feet.
- The Engineer shall provide all staking and inspection. Contractor shall not begin construction until a Construction Inspector has been assigned to the project and is present on site.
- All existing and proposed erosion control measures including silt fencing, erosion control mat, straw bales, inlet barriers, and const. entrance shall be maintained throughout construction by the contractor and until project is accepted by the City of Andover. The on-site engineer shall complete weekly reports on the status of erosion control measures. The contractor shall be required to comply with maintenance and/or replacement of erosion control measures as determined by the on-site engineer until project is accepted by City of Andover. Maintenance and/or replacement of erosion control measures to be paid by L.S. bid item "Maintain Existing BMPs".
- All areas disturbed by construction in Cornerstone Parkway shall be seeded and mulched as follows:
Seed -- Kansas Premium Fescue Blend; 8 lbs. PLS/1000 Sq. Ft.
Annual Rye grass; 3 lbs./1000 Sq. Ft.
Fertilizer -- 12-24-12 Ratio; 45 Lbs./Ac.
Mulch -- 2 Tons Prairie Hay/Ac.
All other disturbed areas are to be seeded as follows:
Seed -- Rye grass; 5 lbs./1000 Sq. Ft.
All costs associated with seeding including mobilization, preparation of ground, seeding, fertilizing, mulching, etc. shall be included in the L.S. bid item "Seeding".
- The Contractor shall not begin work on the project until the Project Inspector is assigned and on site. Any work completed without inspection will be required to be uncovered for inspection at the Contractor's expense.
- RECOMMENDED CONSTRUCTION SEQUENCE:
1) Storm Water Drain Improvements
2) Water Distribution System
3) Sanitary Sewer Improvements
4) Street & SWS Improvements

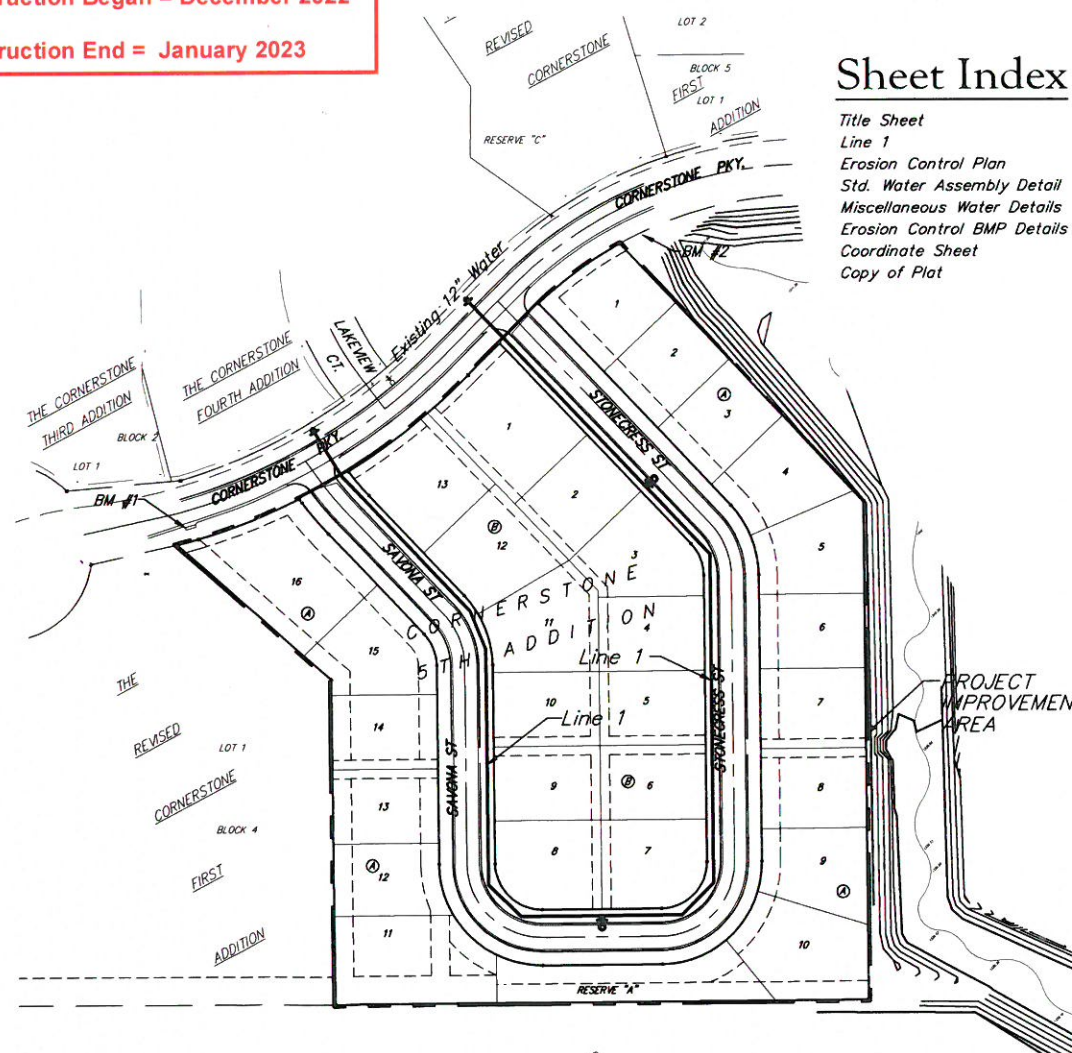
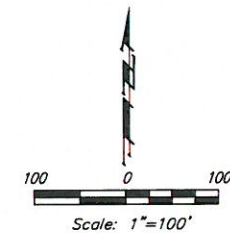
WATER DISTRIBUTION SYSTEM to serve CORNERSTONE FIFTH ADDITION CITY OF WICHITA, KANSAS

Gary Janzen, P.E. City Engineer
Project Number
2020-029394PPW (183021)



Fire Hydrant = CLOW
Valves = CLOW
Fittings = Star
DICI = American
Pipe = Sanderson
RJ Pipe = Westlake

AS- BUILT PLANS
Contractor = Nowak Construction
Inspector = Fred Smith
Baughman Company
As-Built Plans = FES
Construction Began = December 2022
Construction End = January 2023



Sheet Index

Title Sheet	1
Line 1	2-4
Erosion Control Plan	5
Std. Water Assembly Detail	6
Miscellaneous Water Details	7
Erosion Control BMP Details	8-13
Coordinate Sheet	14
Copy of Plat	15

Benchmarks

BM #1: "X" on top of SW corner of catch basin, 20'± NE of the NW corner of Lot 16, Block A, Cornerstone 5th Addition.
Elev. = 1348.94 NGVD29
BM #2: "X" on top of west end of headwall of reinforced concrete box culvert, 26.4'± NE of the NE corner of Lot 1, Block A, Cornerstone 5th Addition.
Elev. = 1349.16 NGVD29



APPROVED AS NOTED
BY WICHITA PUBLIC WORKS
ENGINEERING DIVISION
& BY ANDOVER FIRE DEPARTMENT
Engineering S. Gotchey 12/10/2020
Utilities G. Lolly 12/10/2020
Andover Fire Dept. _____

Baughman Project # = 20-08-E660

September 2022



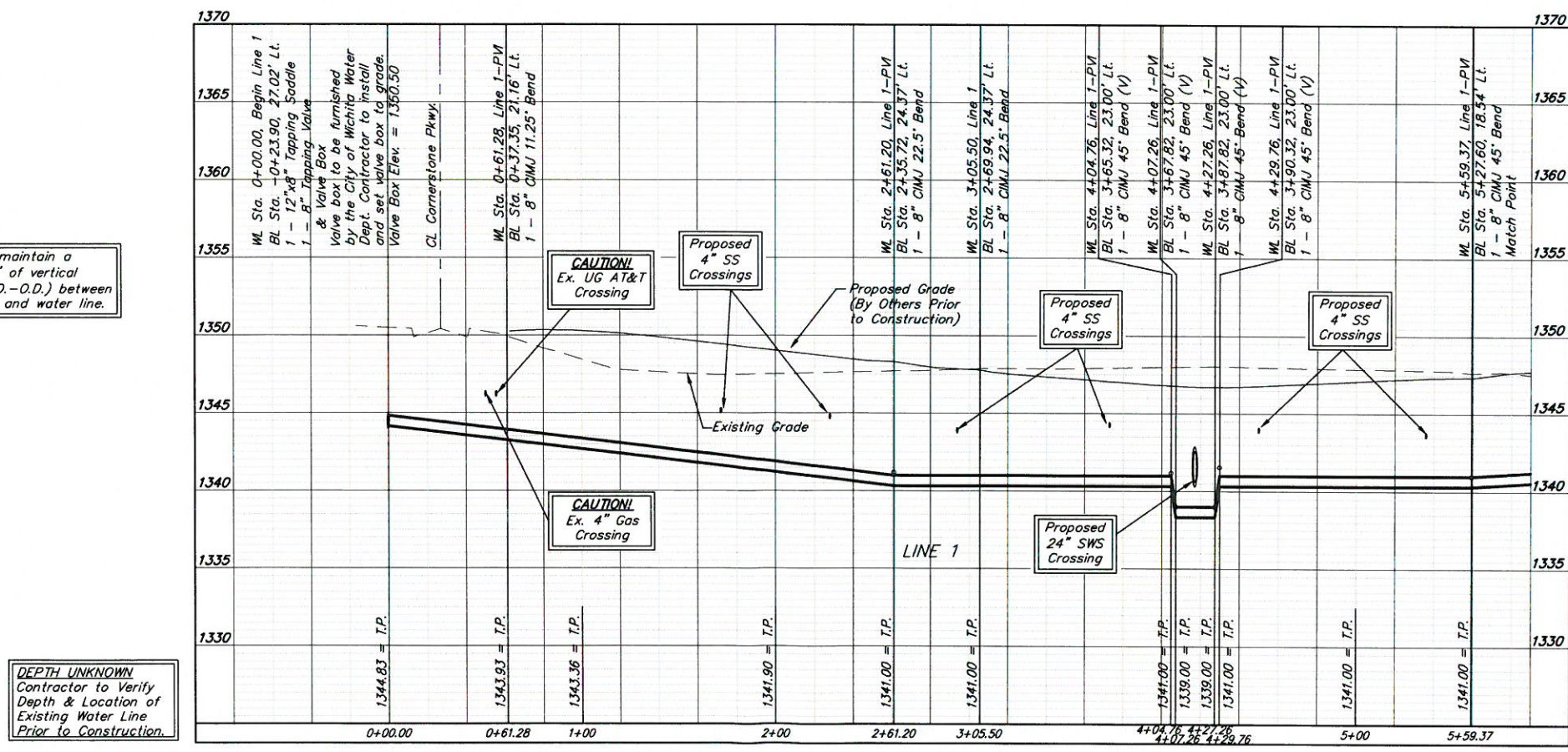
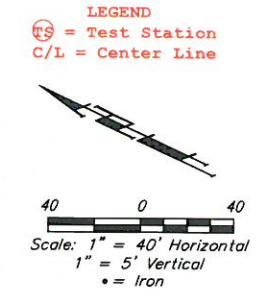
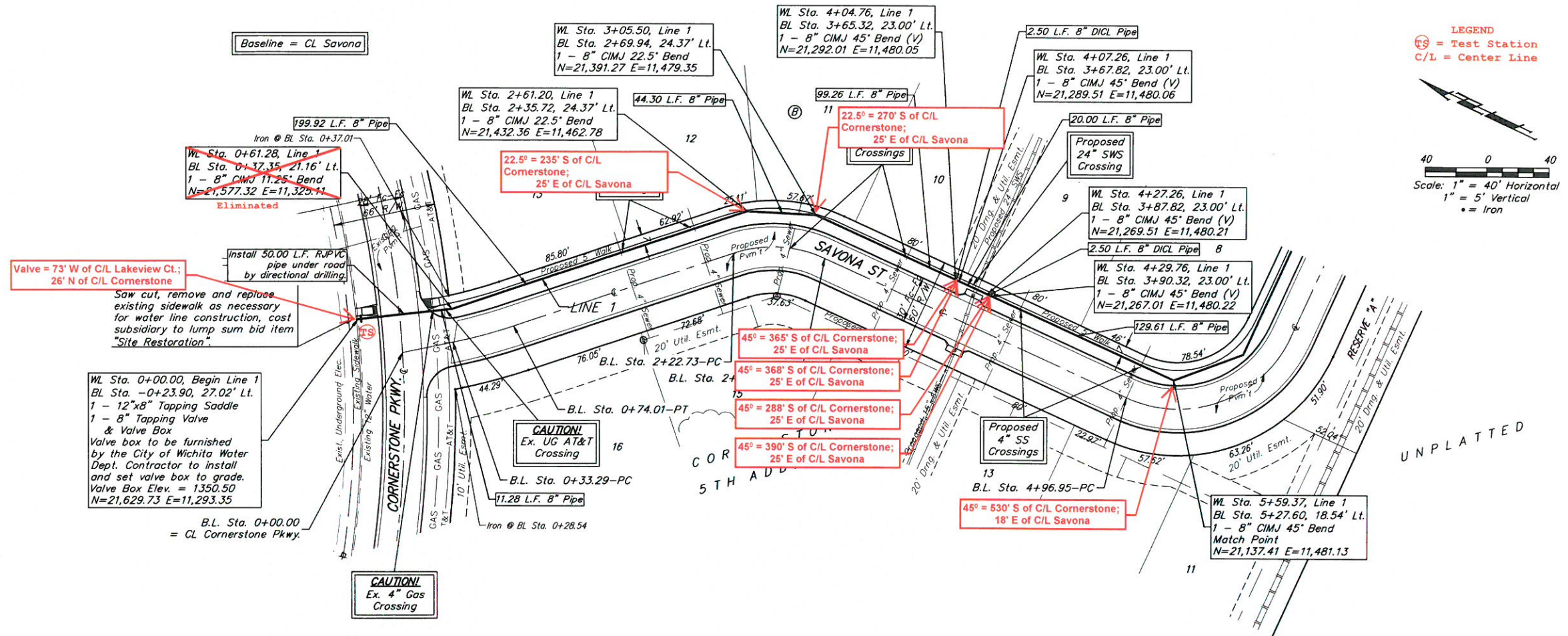
Baughman Company, P.A. 315 Ellis St., Wichita, KS 67211 F 316-262-7271 F 316-262-0144
ENGINEERING | SURVEYING | PLANNING | LANDSCAPE ARCHITECTURE

E:\Projects\Cornerstone Fifth Addition_1311\001\Engineering\Phase 1\WTR\WTR_REV.dwg

BENCHMARKS:

BM #1: "□" on top of SW corner of catch basin, 20'± NE of the NW corner of Lot 16, Block A, Cornerstone 5th Addition.
Elev. = 1348.94 NGVD29

BM #2: "□" on top of west end of headwall of reinforced concrete box culvert, 26.4'± NE of the NE corner of Lot 1, Block A, Cornerstone 5th Addition.
Elev. = 1349.16 NGVD29



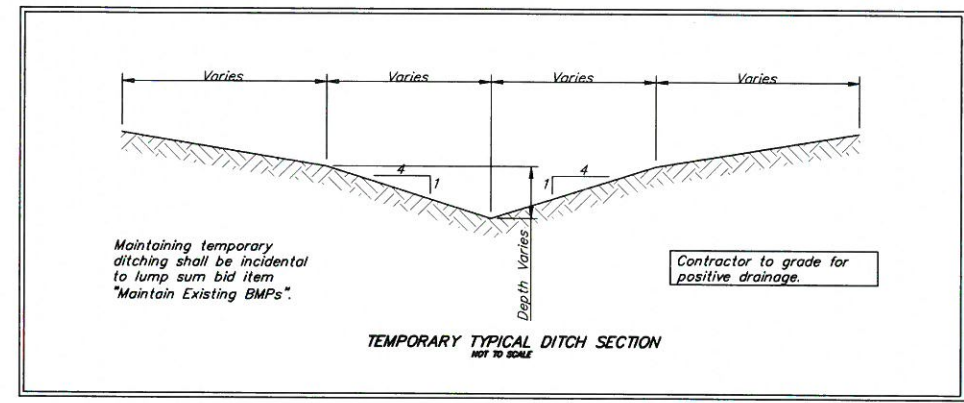
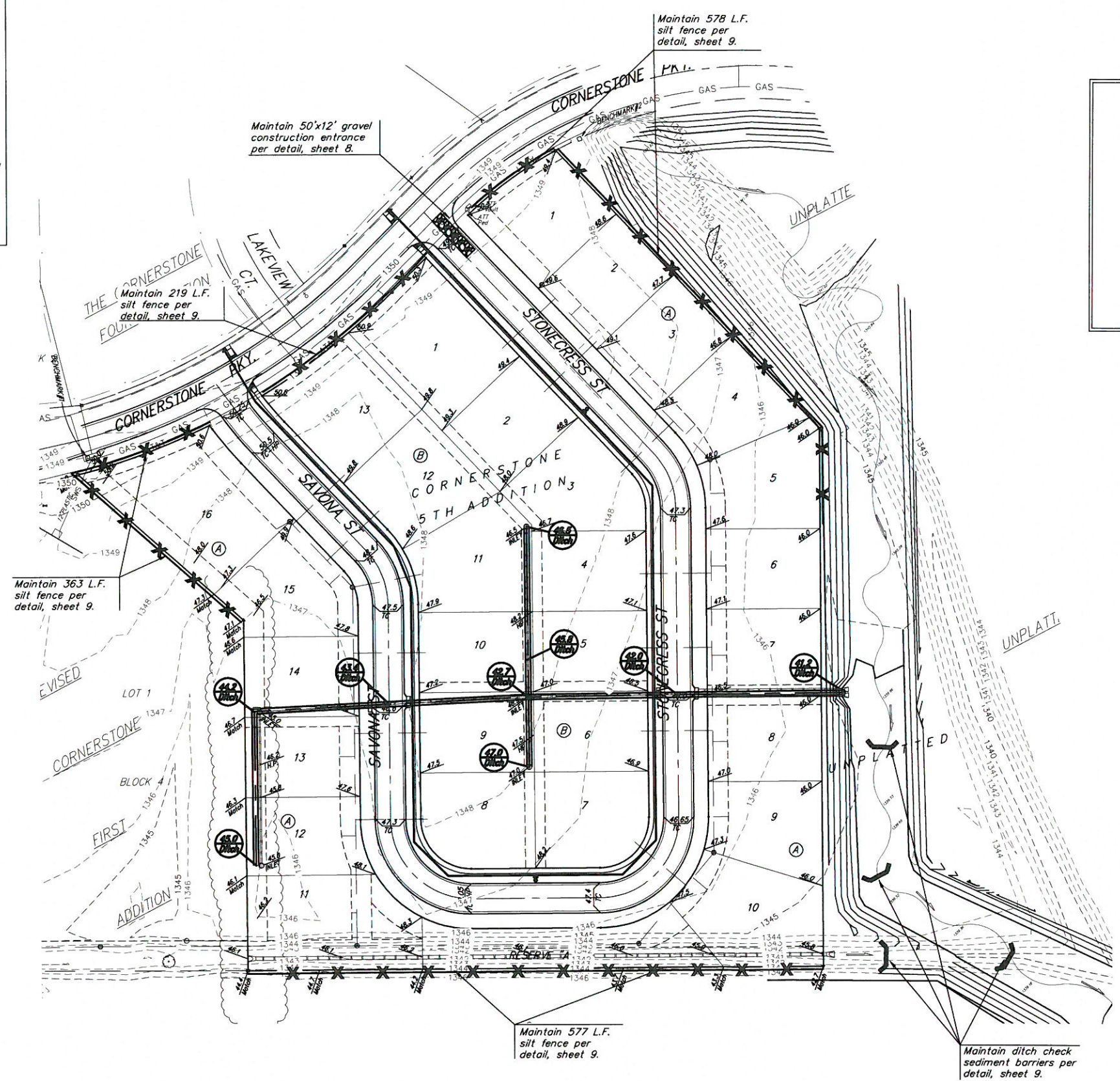
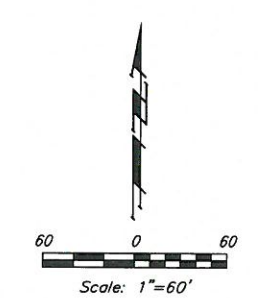
Contractor to maintain a minimum of 2' of vertical separation (O.D.-O.D.) between sanitary sewer and water line.

DEPTH UNKNOWN
Contractor to Verify Depth & Location of Existing Water Line Prior to Construction.



EROSION CONTROL PLAN LEGEND
(Installation Details Found in the SMP2 Plan)

- DROP INLET PROTECTION
- CURB INLET PROTECTION
- DITCH CHECKS
- SILT FENCING
- EROSION CONTROL BERM
- BACK OF CURB PROTECTION
- EROSION CONTROL MAT
- TEMPORARY DITCH
NO SCALE

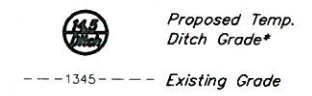


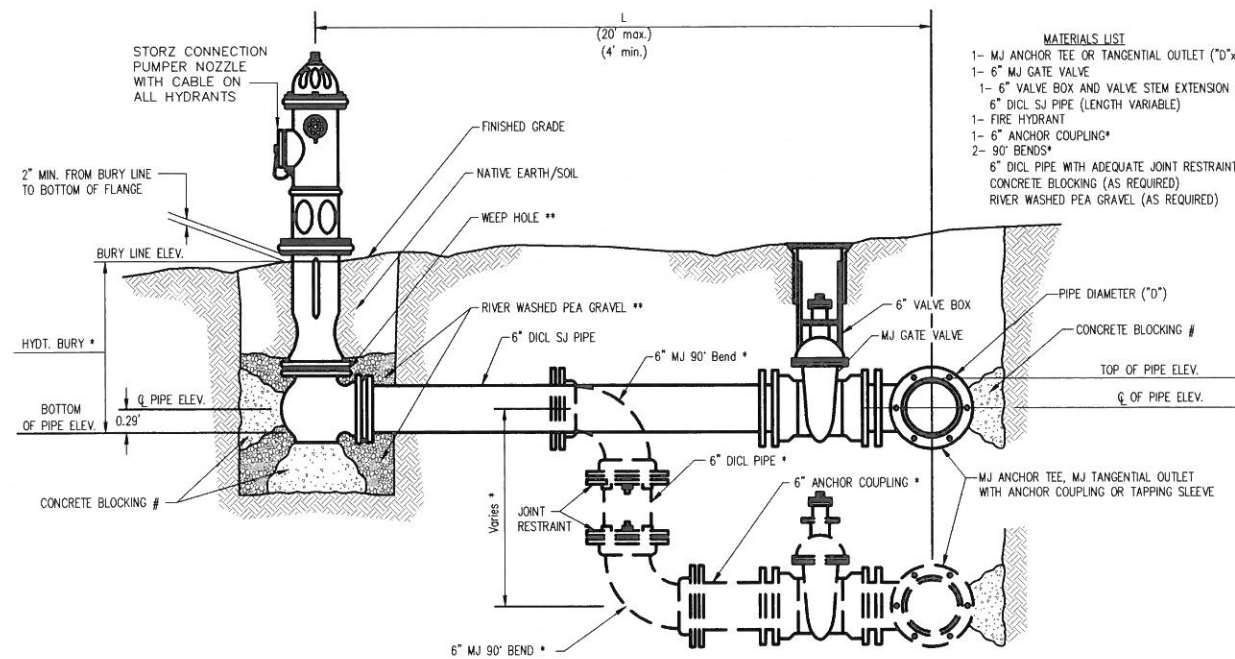
EROSION CONTROL MEASURE	INSTALL	MAINTAIN	REMOVE
BACK OF CURB PROTECTION (LF)	0	0	0
CONSTRUCTION ENTRANCE (EA)	0	1	0
CURB INLET BARRIER (EA)	0	0	0
DITCH CHECK (EA)	0	4	0
DROP INLET PROTECTION (EA)	0	0	0
EROSION CONTROL (LS)	0	0	0
EROSION CONTROL BERM (LF)	0	0	0
SILT FENCE (LF)	0	1,737	0
EROSION CONTROL MAT (SY)	0	0	0

QUANTITIES ARE FOR INFORMATION ONLY! CONTRACTOR SHALL VERIFY QUANTITIES PER FINAL BID QUANTITY SHEET.

* ALL EXISTING BMPs INCLUDING CONSTRUCTION ENTRANCE, SEDIMENT BARRIERS, SILT FENCE, EROSION CONTROL BERM, AND EROSION CONTROL MAT SHALL BE MAINTAINED AND REPAIRED IF NECESSARY. REPLACEMENT OR REMOVAL OF EROSION CONTROL MEASURES TO BE PAID FOR BY L.S. BID ITEM "MAINTAIN EXISTING BMPs"

*Proposed temporary ditch grades shall take precedence over original spot grades when maintaining ditches.





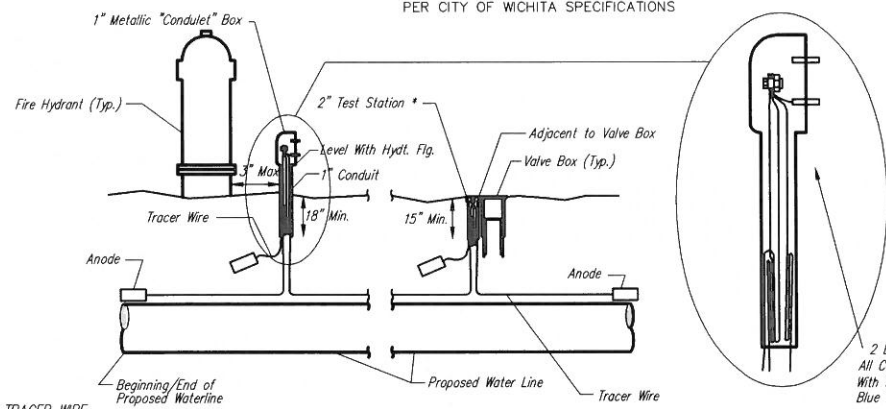
- MATERIALS LIST**
- 1- M.J. ANCHOR TEE OR TANGENTIAL OUTLET (10" x 6")
 - 1- 6" M.J. GATE VALVE
 - 1- 6" VALVE BOX AND VALVE STEM EXTENSION IF REQUIRED *
 - 6" D.I.C.L. S.J. PIPE (LENGTH VARIABLE)
 - 1- FIRE HYDRANT
 - 1- 6" ANCHOR COUPLING*
 - 2- 90° BENDS*
 - 6" D.I.C.L. PIPE WITH ADEQUATE JOINT RESTRAINT *
 - CONCRETE BLOCKING (AS REQUIRED)
 - RIVER WASHED PEA GRAVEL (AS REQUIRED)

* IF THE REQUIRED HYDRANT BURY IS IN EXCESS OF 5', BUT LESS THAN 7', CONTRACTOR SHALL USE STANDARD 5' HYDRANT BURY AND HYDRANT BARREL EXTENSIONS AS NECESSARY. IF THE REQUIRED HYDRANT BURY IS GREATER THAN 7', CONTRACTOR SHALL USE 5' HYDRANT BURY, 2-M.J. 90° BENDS, 6" ANCHOR COUPLING AND 6" D.I.C.L. PIPE AS NECESSARY FOR VERTICAL ADJUSTMENT. THE CONTRACTOR SHALL PROVIDE ADEQUATE THRUST BLOCKING AT HYDRANT AND MEGALUGS, OR SIMILAR RESTRAINT BETWEEN 90° BENDS TO SECURE ALL FITTINGS DURING TESTING AND OPERATION. THE CONTRACTOR SHALL PROVIDE A VALVE STEM EXTENSION PER DETAIL THIS SHEET.

** CAUTION: WEEP HOLES TO BE KEPT CLEAR DURING CONSTRUCTION AND BACKFILL. CONCRETE FOR THRUST BLOCKING SHALL NOT OBSTRUCT WEEP HOLES. PLACE 1 CUBIC FOOT OF RIVER WASHED PEA GRAVEL AROUND EACH WEEP HOLE.

CONCRETE THRUST BLOCKING SHALL BE KEPT CLEAR OF BOLTS, NUTS, AND M.J. ACCESSORIES.

FIRE HYDRANT ASSEMBLY
PER CITY OF WICHITA SPECIFICATIONS



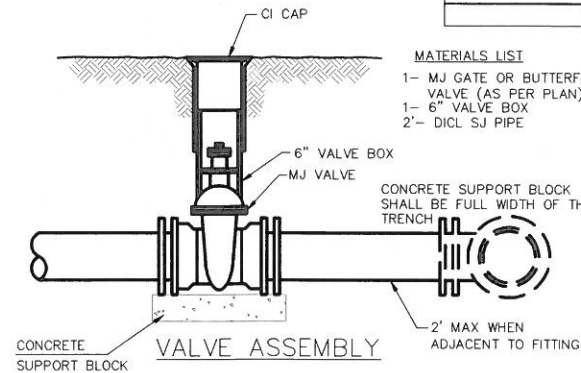
TRACER WIRE
Conductive type pipe locator/tracer wire shall be installed to locate all waterline pipe regardless of pipe material. The wire shall extend the entire length of the proposed pipe. The wire shall be taped to the waterline and pulled with the pipe. A waterproof connector shall be used at splice locations. Test stations shall be installed adjacent to all fire hydrants along the waterline and at blowoffs or valves near the ends of waterlines. Any exception to the location shall be approved by the engineer. At each test station, the tracer wire shall be connected to a 3 lb. Zinc or magnesium anode. Anodes shall also be attached to the tracer wire at both the beginning and the end of the proposed waterline. A typical layout of the tracer wire and test station is provided in the above figure.

TEST STATIONS
A complete list of approved Tracer Wire can be found on City of Wichita's website at www.wichita.gov. The test station for fire hydrant applications shall be a 1 inch galvanized "condulet" style test station as manufactured by AGRA Industries with a removable solid cover having two leads extending from the face or approved equal. The test station for valve applications shall be 2 inch flush style test station T2PS3B as manufactured by HANDLEY Industries or approved equal. The "condulet" style test station shall be attached to a 1 inch rigid galvanized conduit with a minimum length of 36" and plastic end bushing. The flush style shall have the word "WATER" stamped or molded into the lid. All test stations shall be manufactured using molded blue tops or sufficiently coated with blue enamel paint. The tracer wire and the anode wire shall be installed to allow 10 inches of wire within the test station. In concrete environments such as sidewalks or in the downtown area the contractor shall use the flush style test station. The location of all test stations shall be approved by the engineer, recorded, and shown in the as-built drawings.

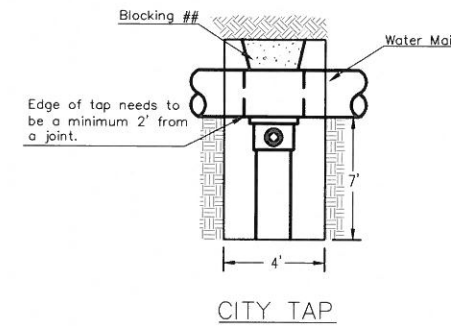
ANODES
The anodes shall be 3 lb. bare zinc or magnesium. The anodes shall be buried at the same elevation as the waterline at each test station. The anodes shall be connected to 12 AWG ccs which shall be extended to the test station.

TRACER WIRE DETAIL
COST IS SUBSIDIARY TO PIPE INSTALLATION

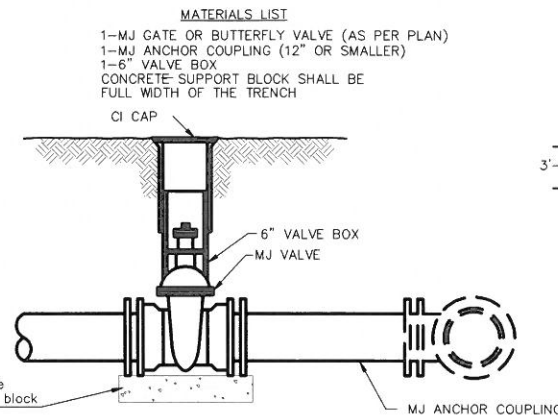
FIRE HYDRANTS REQUIRED				
STATION	BURY LINE ELEVATION	TOP OF PIPE ELEVATION	FIRE HYDRANT BURY REQUIRED*	VALVE STEM EXT. REQUIRED (ft)*
LINE 1				
6+94.71	1347.40	1342.05	6.0'	-
12+84.21	1348.00	1343.15	5.5'	-



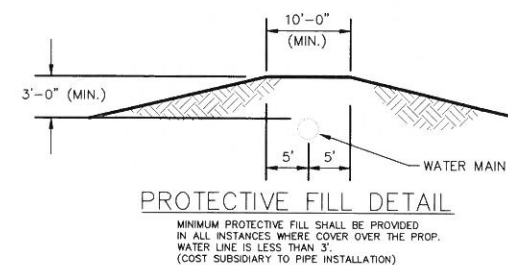
- MATERIALS LIST**
- 1- M.J. GATE OR BUTTERFLY VALVE (AS PER PLAN)
 - 1- 6" VALVE BOX
 - 2- D.I.C.L. S.J. PIPE



When the City of Wichita makes tap, blocking is to be done by Contractor



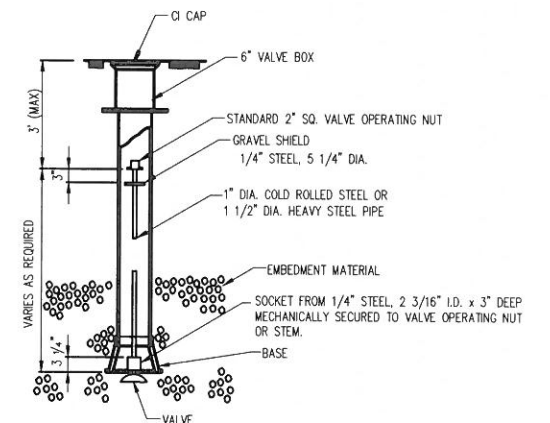
- MATERIALS LIST**
- 1- M.J. GATE OR BUTTERFLY VALVE (AS PER PLAN)
 - 1- M.J. ANCHOR COUPLING (12" OR SMALLER)
 - 1- 6" VALVE BOX
 - CONCRETE SUPPORT BLOCK SHALL BE FULL WIDTH OF THE TRENCH



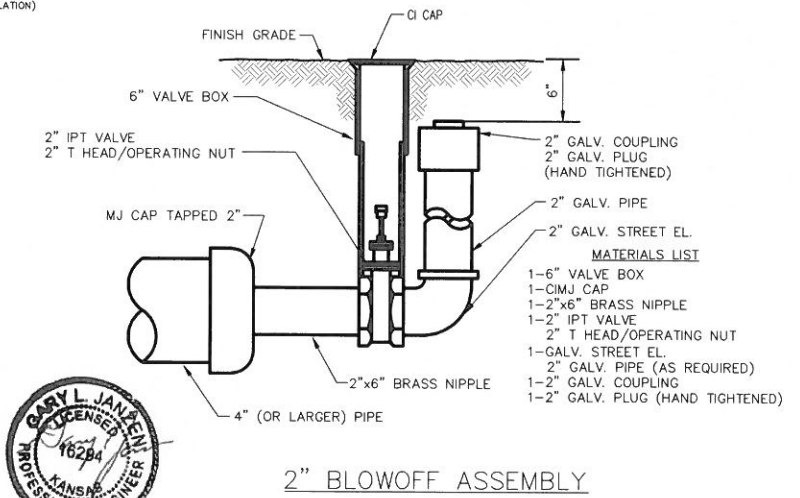
MINIMUM PROTECTIVE FILL SHALL BE PROVIDED IN ALL INSTANCES WHERE COVER OVER THE PROP. WATER LINE IS LESS THAN 3'. (COST SUBSIDIARY TO PIPE INSTALLATION)

CONCRETE SUPPORT BLOCKING FOR BUTTERFLY VALVE INSTALLATION

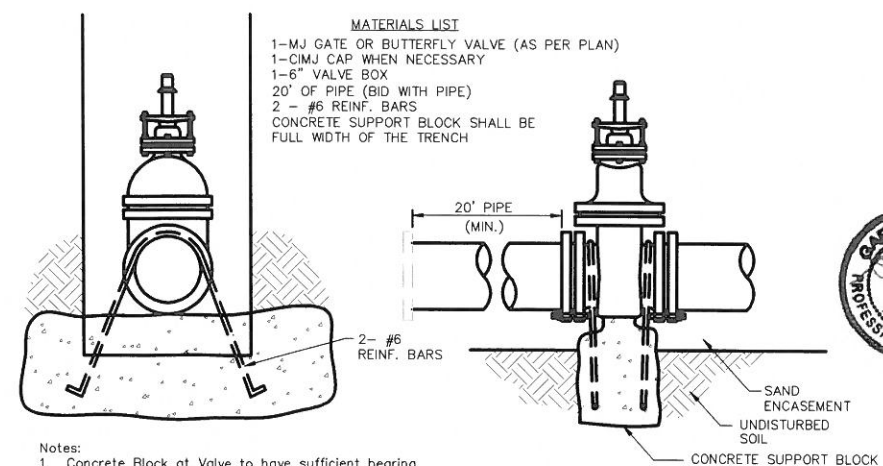
- NOTES**
- This detail covers Butterfly Valve installation, inclusive, regardless of type of pipe or joint used. 24" and larger lines to be detailed on plans.
 - 6" Valve Box and Cover required per City of Wichita Std. Specifications.
 - Conc. Support Block to be full width of trench.



2" BLOWOFF ASSEMBLY



- MATERIALS LIST**
- 1- M.J. GATE OR BUTTERFLY VALVE (AS PER PLAN)
 - 1- CIMJ CAP WHEN NECESSARY
 - 1- 6" VALVE BOX
 - 20' OF PIPE (BID WITH PIPE)
 - 2 - #6 REINF. BARS
 - CONCRETE SUPPORT BLOCK SHALL BE FULL WIDTH OF THE TRENCH



- Notes:**
- Concrete Block at Valve to have sufficient bearing in undisturbed soil to prevent thrust movement as shown in table at right. Field Engineer to determine thrust loading of undisturbed soil and final size of thrust block.
 - The thrust block shall be constructed such that bolts, nuts, and other M.J. accessories are kept clear of concrete.
 - All valves at dead ends and at other locations as called out on the plans shall be blocked as shown here.

THRUST AT VALVES	
VALVE	THRUST AT 150 #/sq
4"	1809 lbs.
6"	4245 lbs.
8"	7540 lbs.
12"	16965 lbs.



CITY OF WICHITA
PUBLIC WORKS & UTILITIES
ENGINEERING DIVISION

STANDARD WATER ASSEMBLY DETAIL

CITY ENGINEER:
GARY JANZEN, P.E.

PROJECT NUMBER: _____ DATE: _____

CITY ENGINEER'S OFFICE:
CITY HALL SEVENTH FLOOR
425 NORTH MAIN STREET
WICHITA, KANSAS 67202-1605
(316) 256-4801

SHEET: **6 of 15**

GENERAL PROVISIONS

- 1. All utilities shall be installed underground.
2. Street Requirements:
A. Public Streets:
1. The pavement section for public streets shall meet the City of Andover standards.
2. Right of way and pavement widths for public streets are as follows:
a. Right of way - 31' roadway with (base of curb to back of curb) with curb and gutter.
3. There shall be no grade across a public street.
3. Utilities:
In overall grading and drainage plan shall be provided as a separate instrument based on a hydrology study.
4. Signs:
Signs for all residential parcels designating the name of the development shall be permitted in rear yards of the entrances to the overall project and to each of the proposed parcels.
5. Homeowners Association:
A document to create and operate a homeowners association shall be filed with the final PUD plan of each parcel to provide for the maintenance of open space, reserves, parking areas, signs, lawns, landscaping, buffer areas, drainage channels, streets, hedge rows within adjacent arterial street right of ways, etc.
6. Easements:
Shall be filed with the final PUD plan for each parcel.
7. Relationship to Comprehensive Plan:
The PUD is in keeping with Andover's Comprehensive Development Plan for this area.
8. Setbacks:
Setbacks are proposed along the collector streets and the loop roads within each parcel.
9. Access Areas:
The location shall be determined at the time of final PUD.
10. Landscaping and Screening:
All parcels within the PUD shall adhere to and provide landscaping and screening per the approved City of Andover Ordinances for Landscaping and Parking Lot Screening.

FINAL PLANNED UNIT DEVELOPMENT PLAN
THE CORNERSTONE FIFTH ADDITION
AN ADDITION TO ANDOVER, BUTLER COUNTY, KANSAS

PART OF THE SOUTHEAST QUARTER OF SECTION 6, TOWNSHIP 27 SOUTH, RANGE 3 EAST OF THE SIXTH PRINCIPAL MERIDIAN, BUTLER COUNTY, KANSAS

SURVEYOR'S CERTIFICATE AND DESCRIPTION

State of Kansas) SS
County of Butler) I, the undersigned licensed Land Surveyor in the State of Kansas, do hereby certify that the following described tract of land was surveyed on December 17, 2013, and the accompanying final plat prepared and that all the monuments shown herein actually exist and their positions are correctly shown to the best of my knowledge and belief.

That part of the Southeast Quarter of Section 6, Township 27 South, Range 3 East of the Sixth Principal Meridian, Butler County, Kansas described as follows: Beginning at the southeast corner of Lot 1, Block 4, The Revised Cornerstone First Addition, an Addition to the City of Andover, Butler County, Kansas; thence N00°24'11"W along the east line of said Lot 1, 350.00 feet to a deflection corner in said east line, thence N48°35'12"W along the northeast line of said Lot 1, 220.14 feet to the most northerly northeast corner of said Lot 1, said most northerly northeast corner also being the point of curvature of a tangent curve to the left in the south line of Cornerstone Pky. as dedicated in said The Revised Cornerstone First Addition; thence easterly along said curve, having a central angle of 04°05'25" and a radius of 333.00 feet, an arc distance of 23.77 feet, (having a chord length of 23.77 feet bearing N75°27'20"E), to a point of compound curvature of a tangent curve to the left in said south line; thence easterly and northeasterly along said curve, having a central angle of 28°54'08" and a radius of 682.00 feet, an arc distance of 344.03 feet, (having a chord length of 340.39 feet bearing N58°57'34"E), to the point of tangency of said curve; thence N44°30'30"E along the south line of said Cornerstone Pky, 95.25 feet to the point of curvature of a tangent curve to the right in said south line; thence northeasterly along said curve, through a central angle of 18°37'50" and having a radius of 418.00 feet, an arc distance of 121.33 feet, (having a chord length of 120.90 feet bearing N52°49'25"E), thence S43°31'16"E, 361.99 feet; thence S00°24'11"E, 537.00 feet to a point 1000.00 feet northerly of the south line of said Southeast Quarter as measured parallel with the east line of said Southeast Quarter; thence S89°35'49"W parallel with the south line of said Southeast Quarter, 577.00 feet to the point of beginning.

Containing 9.41 Acres, more or less.
Existing public easements, dedications, building setback lines, and access controls, if any, being vacated by virtue of K.S.A. 12-512b, as amended.
Date signed: 6-3-2020
Baughman Company, P.A.

Michael G. ... Surveyor
Seal and signature of Michael G. ...

OWNER'S CERTIFICATION AND DEDICATION

State of Kansas) SS
County of) This is to certify that the undersigned owners of the land described in the Surveyor's Certificate, have caused the same to be surveyed and subdivided on the accompanying plat into Lots, Blocks, Streets, a Reserve and other public easements, under the name of Final Planned Unit Development Plan, "THE CORNERSTONE FIFTH ADDITION", an addition to Andover, Butler County, Kansas; that all easements as denoted on the plat are hereby dedicated to and for the use of the public for the purpose of constructing, operating, maintaining, and repairing public improvements; and further that the land contained herein is held and shall be conveyed subject to any reservations and covenants on file or hereafter filed in the office of the Register of Deeds of Butler County, Kansas. Reserve "A" is hereby reserved for open space, landscaping, and other purposes. Res: none.
All abutters rights of access and across the northwest line of Lots 1 to the City of Andover, Kansas, for the lowest opening to the site, Block A, shall be 1347.0

CT Real Estate, LLC, a Kansas limited liability company
Sudha Kalli-Tokala; Member
Sudha Kalli-Tokala

NOTARY CERTIFICATE

State of Kansas) SS
County of) The foregoing instrument acknowledged before me this 23rd day of June, 2020, by Sudha Kalli-Tokala, Member of CT Real Estate, LLC, a Kansas limited liability company, on behalf of the limited liability company.

LINETTE A. SAUBER
Notary Public
Signature and name of Linette A. Sauber.

My App'l. Exp. 09-20-2022

PLANNING AGENCY CERTIFICATE

State of Kansas) SS
City of Andover) This plat approved by the Andover City Planning Commission this 17 day of June, 2020, and was recommended for approval by the City Council of Andover, Kansas.
Date signed: JUN 25, 2020

William E. Schnauber, Chairman
Gory Israhel, Secretary
Signatures and names of planning agency members.

GOVERNING BODY CERTIFICATE

State of Kansas) SS
City of Andover) The dedications shown on this plat, if any, are hereby accepted by the Governing Body of the City of Andover, Kansas, on this 17 day of June, 2020.

Ronnie Price, Mayor
Susan Penner, City Clerk
Signatures and names of governing body members.

COUNTY SURVEYOR'S CERTIFICATE

Reviewed in accordance with K.S.A. 2019 Supp. 58-2005 on this 17 day of June, 2020.

Cerale E. Olson, PLS #1516
Appointed Land Surveyor
Butler County, Kansas
Signature and name of county surveyor.

TRANSFER RECORD

Entered on transfer record this 21st day of August, 2020.

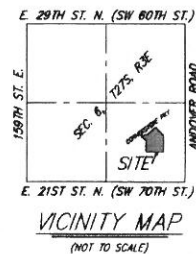
Tatum Stafford, County Clerk
Jenny Bridges, Deputy
Seal and signatures of county clerk.

REGISTER OF DEEDS CERTIFICATE

State of Kansas) SS
County of Butler) This is to certify that this instrument was filed for record in the office of the Register of Deeds at 4:40 a clock P.M., on the 21st day of August, 2020, and is duly recorded.

PLAT Q Page 162
Fee: \$ 32.00
Marcia McCoy, Register of Deeds
Jacque Roberts, Deputy
Signatures and names of register of deeds.

Baughman Company, P.A.
315 E. St. Wichita, KS 67211
Phone: 316.262.2121 Fax: 316.262.0149



A DRAINAGE PLAN HAS BEEN DEVELOPED FOR THIS SUBDIVISION AND IS ON FILE WITH THE CITY OF ANDOVER, KANSAS. ALL DRAINAGE EASEMENTS, RIGHT-OF-WAYS, OR RESERVES SHALL REMAIN AT ESTABLISHED GRADES OR AS MODIFIED BY THE APPROVAL OF THE CITY ENGINEER OF THE CITY OF ANDOVER, KANSAS. NO OBSTRUCTIONS WHICH IMPED THE FLOW OF THIS DRAINAGE SYSTEM SHALL BE ALLOWED. FENCES SHALL BE ALLOWED WITHIN THE DRAINAGE EASEMENTS PROVIDED, HOWEVER, THAT THE FENCES SHALL NOT IMPED THE FLOW OF SURFACE DRAINAGE.

FOR REFERENCE ONLY
NOT TO SCALE

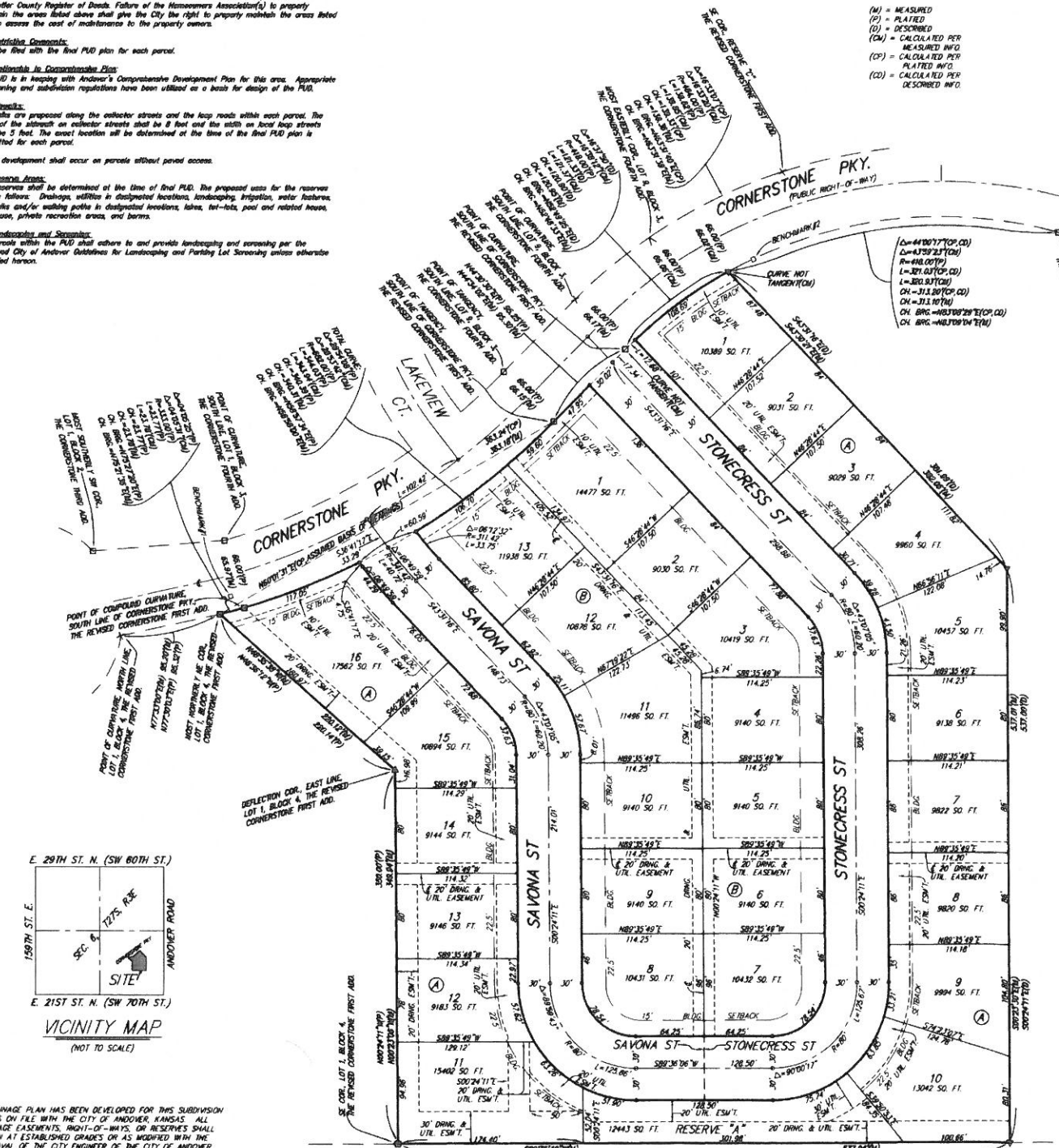


Table with 3 columns: LOTS, BLOCK, ELEVATION. Row 1: 1-11, A, 1347.0

BENCHMARK: SQUARE CUT ON TOP OF SOUTHWEST CORNER OF CATCH BASIN 20' NORTHEASTLY OF THE NORTHWEST CORNER OF LOT 15, BLOCK A. ELEV. = 1548.84 NGVD29

BENCHMARK: SQUARE CUT ON TOP OF WEST END OF HEADWALL OF REINFORCED CONCRETE BOX CULVERT, 26.4' NORTHEAST OF THE NORTHEAST CORNER OF LOT 1, BLOCK A. ELEV. = 1349.18 NGVD29

Vertical text on the right edge: CORNERSTONE FIFTH ADDITION COPY OF PLAT WATER DISTRIBUTION SYSTEM