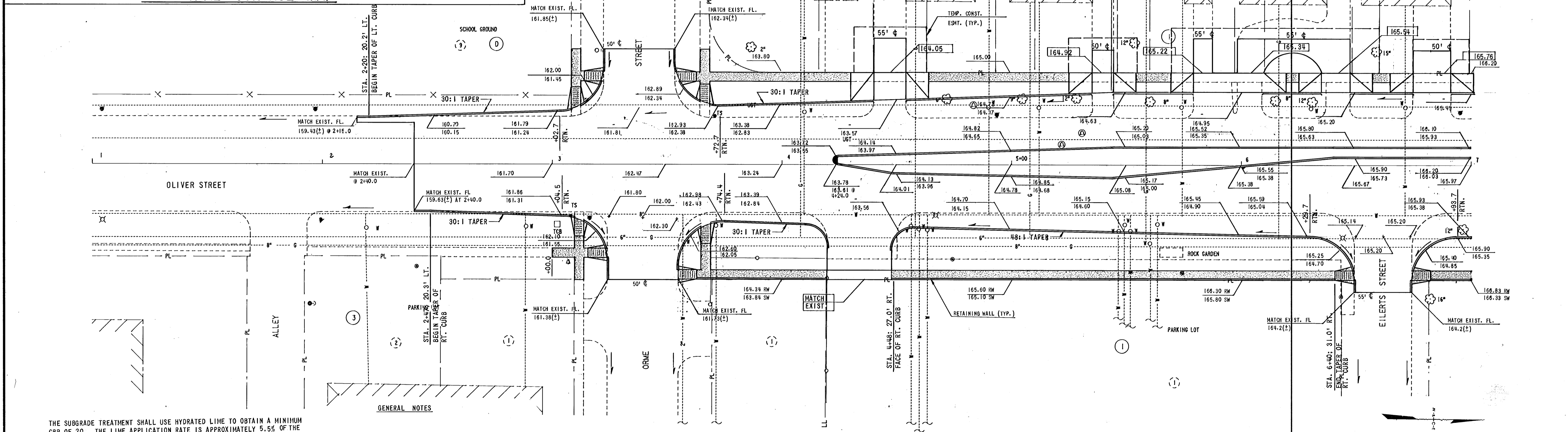


TBM #1 "X" CUT IN SIDEWALK AT NORTHWEST CORNER OF OLIVER AND KELLOGG. ELEVATION = 167.80

TBM #2 TOP OF NORTHWEST CURB RETURN AT OLIVER AND ORME ELEVATION = 162.62



THE SUBGRADE TREATMENT SHALL USE HYDRATED LIME TO OBTAIN A MINIMUM CBR OF 20. THE LIME APPLICATION RATE IS APPROXIMATELY 5.5% OF THE SOIL BY WEIGHT BASED ON A DRY DENSITY DETERMINATION.

MATERIALS AND CONSTRUCTION UNDER THIS PROJECT SHALL CONFORM TO THE CITY OF WICHITA, DEPARTMENT OF ENGINEERING STANDARD SPECIFICATIONS.

CONTRACTOR SHALL VERIFY LOCATIONS AND ELEVATIONS OF ALL UTILITIES PRIOR TO CONSTRUCTION. THE CONTRACTOR SHALL NOTIFY UTILITY COMPANIES PRIOR TO EXCAVATION. UTILITY RELOCATIONS OR ADJUSTMENTS SHALL BE COMPLETED BY OTHERS. CONTRACTOR SHALL COORDINATE HIS WORK WITH UTILITY RELOCATIONS.

UTILITY OWNERS AND CONTACTS:

POWER LINES	- KANSAS GAS AND ELECTRIC	- BOB BLEVINS	- 261-6422
GAS LINES	- GAS SERVICE COMPANY	- GENE CURLESS	- 263-7511
TELEPHONE	- SOUTHWESTERN BELL	- JERRY JACKSON	- 268-2895
WATER LINES	- CITY OF WICHITA	- DICK MCCLINTOCK	- 268-4555

PRE-CAST CURB INLETS SHALL NOT BE USED BY THE CONTRACTOR.

TRAFFIC IS TO BE CARRIED THROUGH CONSTRUCTION AT ALL TIMES. SEE "CONSTRUCTION SEQUENCE AND TRAFFIC CONTROL PLAN" FOR DETAILS.

REPLACEMENT DRIVES SHALL BE THE SAME WIDTH AS EXISTING DRIVES UNLESS SHOWN OTHERWISE ON THE DRAWINGS.

THE CONTRACTOR SHALL BE RESPONSIBLE FOR PRESERVING PROPERTY IRONS. THE CONTRACTOR SHALL BE REQUIRED TO RE-ESTABLISH ANY PROPERTY IRONS WHICH ARE DAMAGED OR DESTROYED BY THE CONTRACTOR'S CONSTRUCTION OPERATIONS. SUCH IRONS SHALL BE RE-ESTABLISHED BY A LICENSED LAND SURVEYOR OR A LICENSED PROFESSIONAL ENGINEER IN ACCORDANCE WITH STATE LAWS.

DIMENSIONS TO FACE OF CURBS. RADIUS AT KELLOGG EQUAL 35'; OTHER INTERSECTIONS RADIUS EQUAL 20'.

RIGHT OF WAY AND EASEMENTS ARE TO BE FURNISHED BY THE CITY OF WICHITA. CONTRACTOR SHALL CONFINED CONSTRUCTION WITHIN RIGHT OF WAY AND EASEMENTS SHOWN ON THE DRAWINGS. DAMAGES INFLICTED OUTSIDE THIS AREA ARE THE CONTRACTOR'S RESPONSIBILITY.

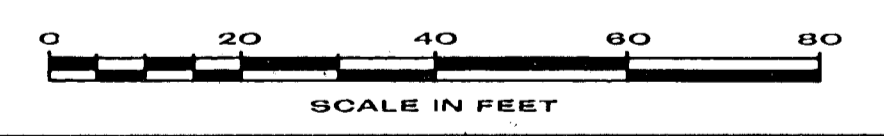
AS IDENTIFIED BY THE FIELD ENGINEER SALVAGEABLE MATERIALS REMOVED FROM THE PROJECT SHALL BECOME PROPERTY OF THE CITY OF WICHITA. SALVAGEABLE MATERIAL SHALL BE STORED ON THE R/W AND PROMPTLY REMOVED BY CITY FORCES. NON-SALVAGEABLE ITEMS SHALL BE DISPOSED OF AT CITY APPROVED LOCATIONS BY THE CONTRACTOR.

CITY FORCES SHALL REMOVE EXISTING TRAFFIC SIGNALS AND INSTALL ANY TEMPORARY TRAFFIC SIGNAL EQUIPMENT THAT MAY BE REQUIRED DURING CONSTRUCTION. CITY FORCES SHALL REMOVE AND RESET STREET SIGNS, WATER METERS, WATER VALVE BOXES AND FIRE HYDRANTS AS REQUIRED.

ELEVATIONS SHOWN ARE ON CITY OF WICHITA DATUM. SPOT ELEVATIONS GIVEN THUS: 164.53 (TOP OF CURB) OR 164.68 (PAVEMENT ELEV.), 164.36 (FLOWLINE ELEV.)

SEE STANDARD CITY DETAILS FOR WHEELCHAIR RAMP DETAIL AND DRIVE APPROACHES.

PAVEMENT MARKINGS NOT PART OF THIS CONTRACT.



WICHITA, KANSAS
OLIVER AT KELLOGG INTERSECTION IMPROVEMENTS
PLAN, GENERAL NOTES AND CONTROL
(STATION 2+15 TO STATION 7+00)

DESIGN	BGR	DRAWN	MEK	DATE:	JAN. 1982
				FILE NO.	81-323B
				SHEET NO.	5
				OF 22	

WILSON & COMPANY ENGINEERS & ARCHITECTS WICHITA - KANSAS

CITY OF WICHITA PROJECT NO. 472-76-245-81101-000-000-001

REVISION	DATE	BY