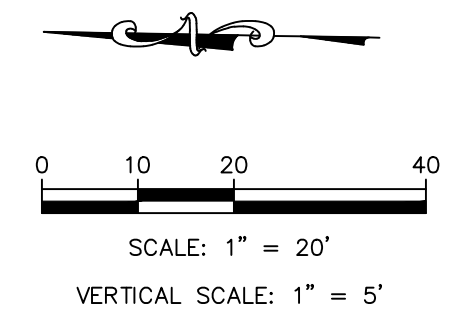


CONTRACTOR SHALL INSTALL BMP MEASURES AS NECESSARY PER CITY OF WICHITA STANDARDS, SPECIFICATIONS AND SPECIAL PROVISIONS - SEE CITY OF WICHITA BMP DETAILS FOR FURTHER INFORMATION. SILT FENCE AND A CONSTRUCTION ENTRANCE SHALL BE USED DURING CONSTRUCTION TO MINIMIZE SEDIMENTATION RUN OF AND VEHICLE TRACKING ON PUBLIC WAYS.

Built As Per Plans; Location: From Datum: Center of Orme st./ Webb rd. 434 ft. E./250 ft. S. to Valve, 426 ft. E./250 ft. S to Hydrant Assy. STA. 302+80.70

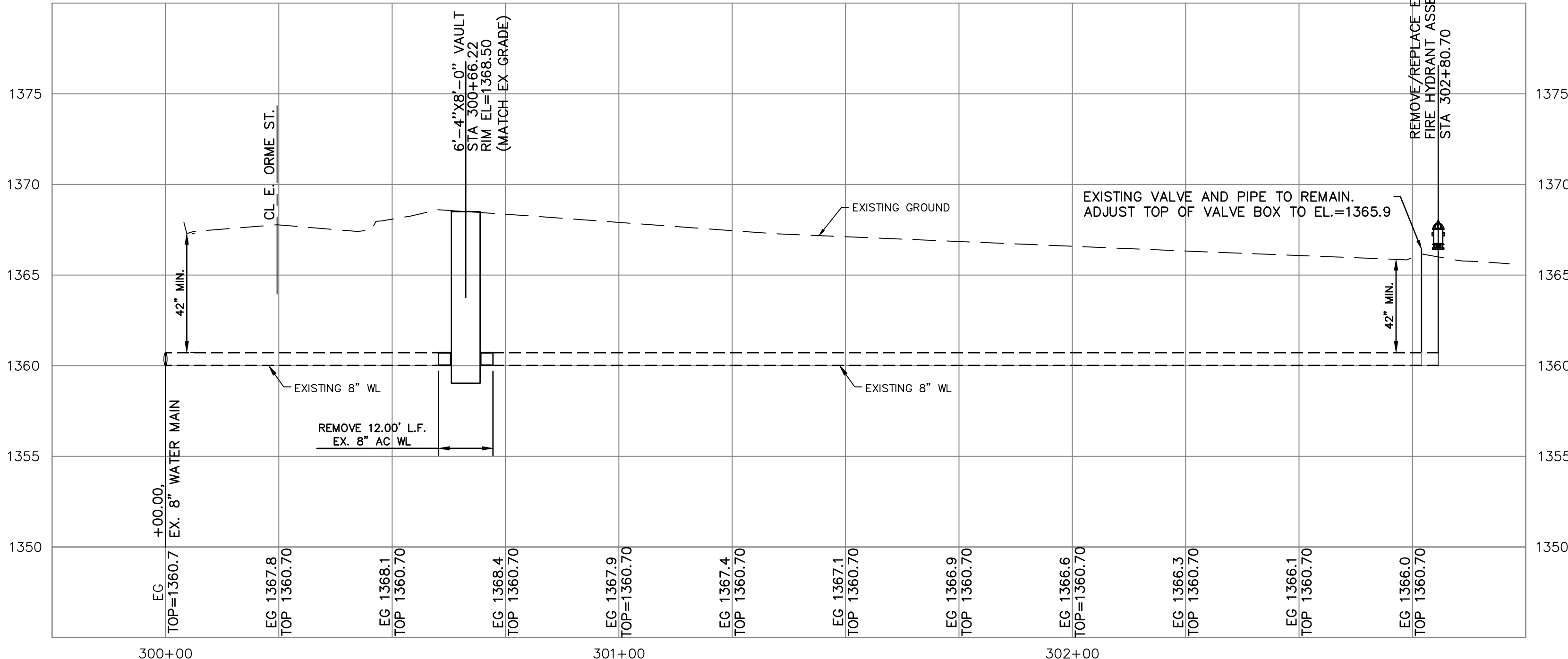


UTILITY NOTES:

- CONSTRUCTION SHALL NOT START ON ANY PUBLIC WATER OR SANITARY SEWER SYSTEM UNTIL WRITTEN APPROVAL OR PERMITS HAVE BEEN RECEIVED FROM THE CITY OF WICHITA.
- ALL UTILITY AND STORM SEWER TRENCHES CONSTRUCTED UNDER AREAS THAT RECEIVE PAVING SHALL BE BACKFILLED TO 18 INCHES ABOVE THE TOP OF THE PIPE WITH SELECT GRANULAR MATERIAL PLACED ON EIGHT-INCH LIFTS, AND COMPACTED TO 95% MODIFIED PROCTOR DENSITY.
- CONTRACTOR SHALL NOT OPEN, TURN OFF, INTERFERE WITH, OR ATTACH ANY PIPE OR HOSE TO OR TAP ANY WATER MAIN BELONGING TO THE CITY UNLESS DULY AUTHORIZED TO DO SO BY THE CITY. ANY ADVERSE CONSEQUENCE OF ANY SCHEDULED OR UNSCHEDULED DISRUPTIONS OF SERVICE TO THE PUBLIC ARE TO BE THE LIABILITY OF THE CONTRACTOR. **KAW VALLEY ENGINEERING AND OWNER ARE TO BE HELD HARMLESS.**
- LOCATIONS SHOWN FOR PROPOSED WATER LINES ARE APPROXIMATE. VARIATIONS MAY BE MADE, WITH APPROVAL OF THE ENGINEER, TO AVOID CONFLICTS.
- CONTRACTOR TO INSTALL TRACING WIRE ALONG ALL NON-METALLIC WATER MAINS AND SERVICE LINES PER SPECIFICATIONS.
- CONTRACTOR SHALL EXPOSE EXISTING UTILITIES AT LOCATIONS OF POSSIBLE CONFLICT AND POINTS OF CONNECTION PRIOR TO ANY CONSTRUCTION OF NEW UTILITIES.
- WATER LINES SHALL HAVE A MINIMUM COVER OF 42 INCHES. ALL VALVES ON MAINS AND FIRE HYDRANT LEADS SHALL BE WITH VALVE BOX ASSEMBLIES. THE SIZE OF VALVE BOX ASSEMBLY TO BE INSTALLED IS DETERMINED BY THE TYPE AND SIZE OF VALVE. VALVE BOX CAPS SHALL HAVE THE WORD "WATER".
- ANY NECESSARY DOMESTIC WATER LINE ADJUSTMENTS SUBSIDIARY TO VAULT INSTALLATION.

LEGEND (EXISTING)

- w- EXISTING WATER LINE
- o EXISTING WATER VALVE



BENCHMARKS & CONTROL

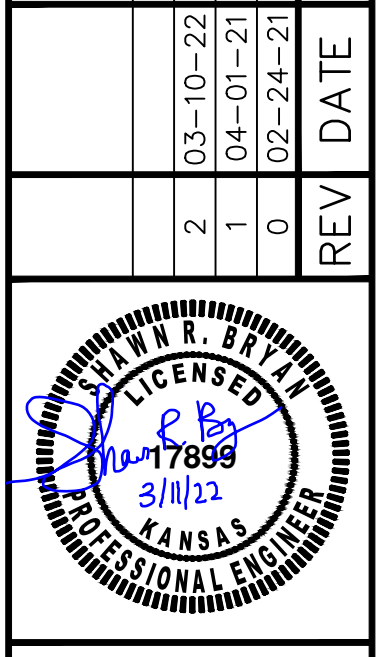
BM #60: CHISELED SQUARE IN TOP OF CURB, 14.5' WEST OF MOST WESTERLY SOUTHWEST CORNER LOT 4, BLOCK A, PAUL BURNETT 2ND ADDITION (NOTED ON PLAT AS SOUTHWEST CORNER LOT 2, PAUL BURNETT 2ND ADDITION) TAKEN FROM WILDCAT-KELLOGG ADDITION PLAT, RECORDED IN PC271-7 ELEVATION = 1370.56

CPT #201: CUT SQUARE WITH X IN CENTER OF WEDGE AT THE CENTERLINE OF CURB INLET BETWEEN BOTH DRIVES OF 650 SOUTH WEBB, SOUTH SIDE OF EAST ORME STREET
N 1682797.05, E 1681399.21, ELEVATION = 1367.95

CPT #202: X CUT IN CONCRETE DRIVE ±12' NORTH OF SOUTH EAST CORNER CONCRETE (35' W OF FIRE HYDRANT)
N 1682567.85, E 1681382.53, ELEVATION = 1365.34

		SRB	CS	MLT	MLT
		SRB	TSR	SRB	MLT
		SRB	TSR	SRB	MLT
				DSN	CHK

REV	DATE	DESCRIPTION
2	03-10-22	FIRE HYDRANT ADDITION
1	04-01-21	FOR CONSTRUCTION
0	02-24-21	SUBMITTAL FOR CITY REVIEW



SHAWN R. BRYAN
ENGINEER
KS # 17899

200 N. EMPORIA, SUITE 100
WICHITA, KANSAS 67202-440-4309
PH: (316) 261-1789
www.kaveg.com | info@kaveg.com

KAW VALLEY ENGINEERING

KAW VALLEY ENGINEERING, INC. IS AUTHORIZED TO OFFER ENGINEERING SERVICES IN THE STATE OF KANSAS UNDER CERTIFICATE OF AUTHORIZATION # E-113. EXPIRES 12/31/22

FIRE HYD. IMPROVEMENT
650 S. WEBB ROAD
WICHITA, KS

WATER PLAN

PROJ. NO.	G21-1766
DESIGNER	SRB
DRAWN BY	TSR
CFN	
SHEET	1766WP
C-02	1

